

Sensor ultrassônico M18 design longo ATEX

UDA18 ATEX ultrasonic sensors have the same functions and features as the sensors of the U*18 series. They were, however, developed especially for use in areas potentially subject to gas or dust explosion. They have ATEX approval, making them suitable for use in the chemical and pharmaceutical industries as well as in systems that process oil and gas.

Product characteristics

- Reliable measuring regardless of transparency, gloss, surface characteristics and material colour
- Resistant to contamination, moisture, dust and mist
- Stainless steel housing material (DIN 1.4404) or plastic (PBT)
- Two different operating ranges up to 2.2 m
- Switching output NPN/PNP/Push-Pull, analogue output, IO-Link
- Parameterization via teach-in button or IO-Link
- Four operating modes: retro-reflective, window, hysteresis and switching point operation
- Synchronization and multiplex mode
- Temperature compensation
- ATEX approval

Desenho técnico

IMAGE 1/3

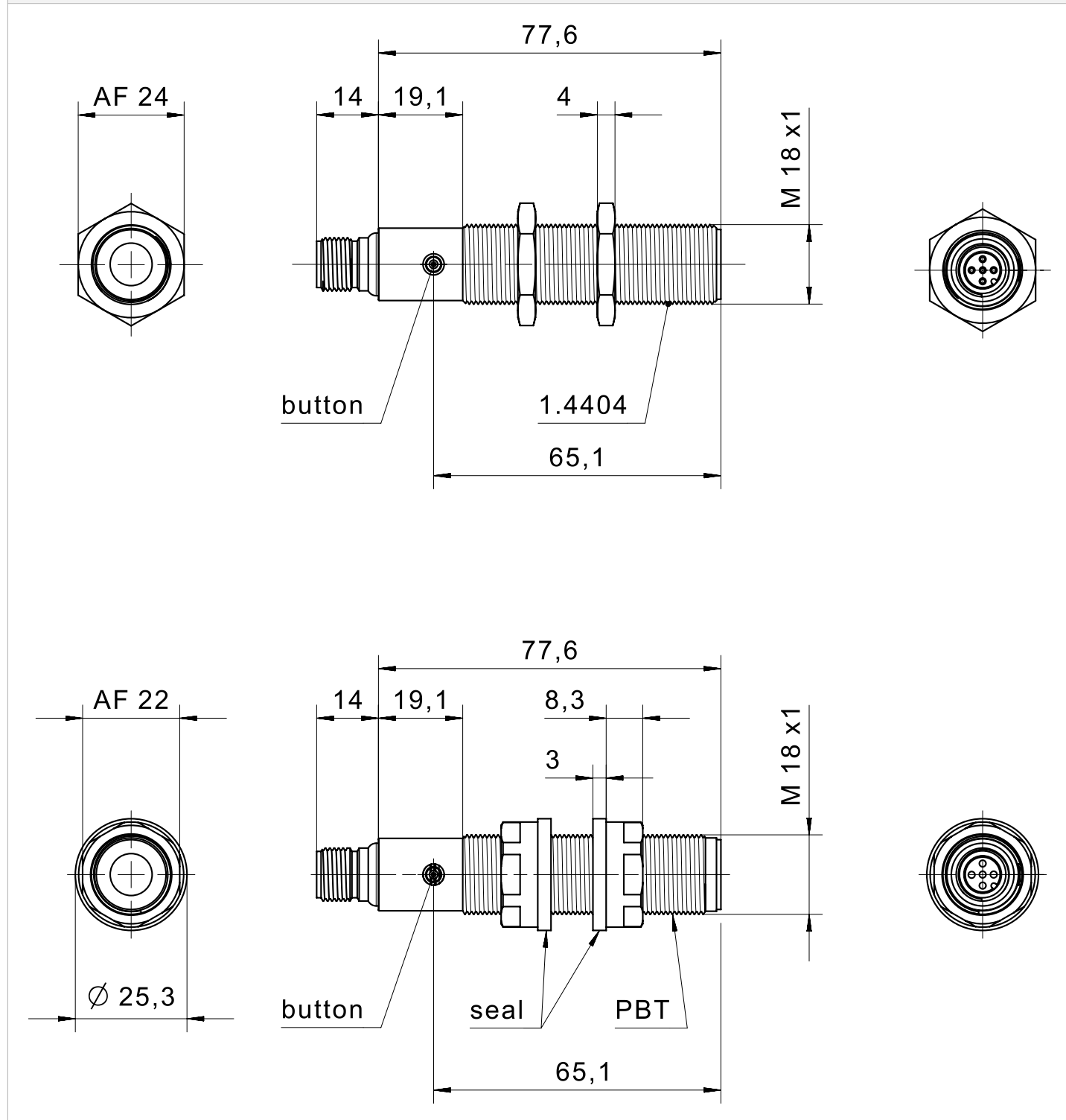


IMAGE 2/3

male M12

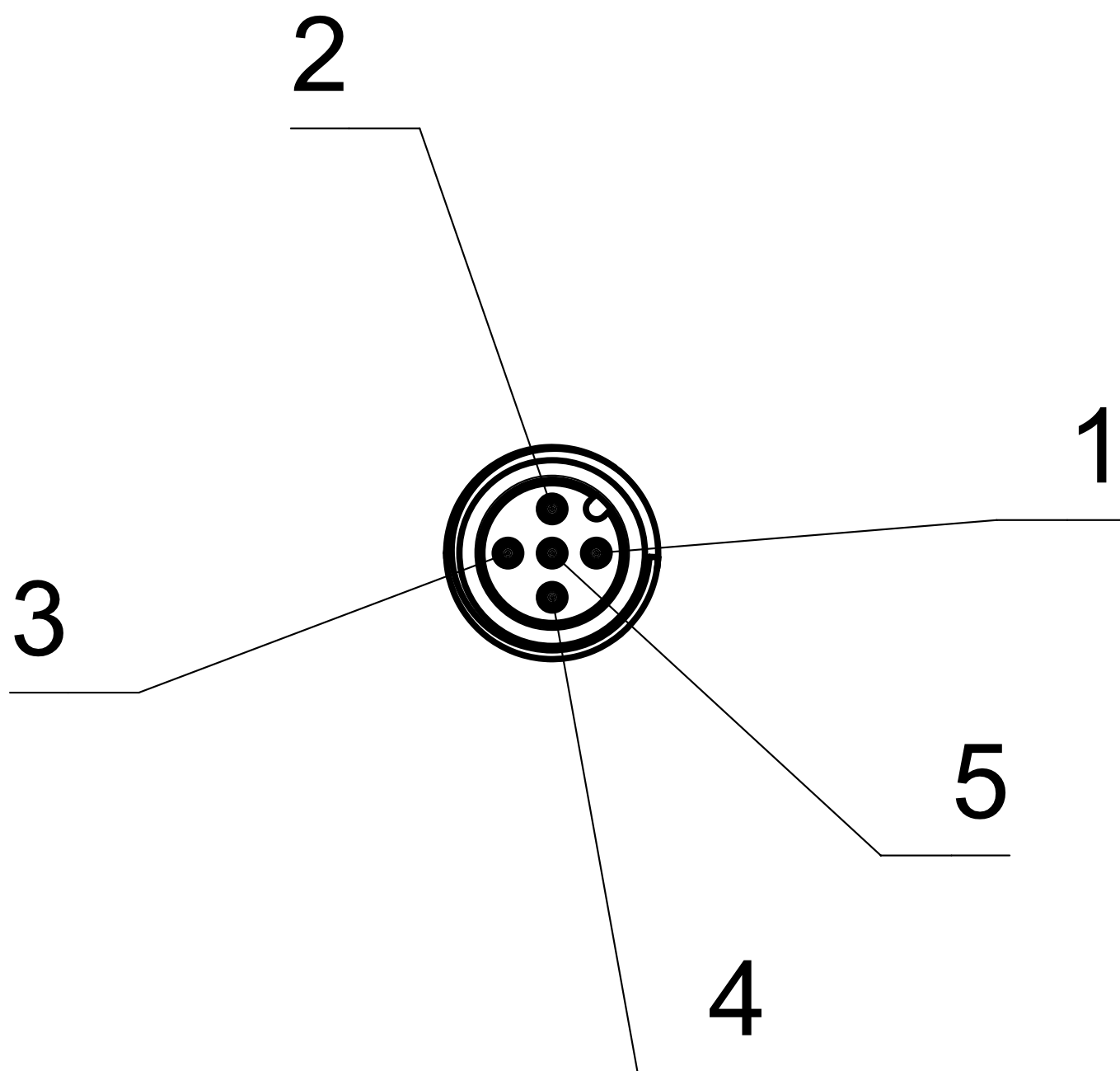
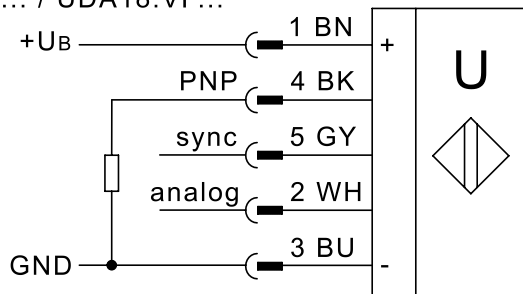
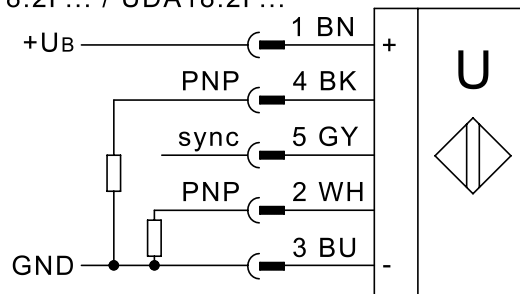


IMAGE 3/3

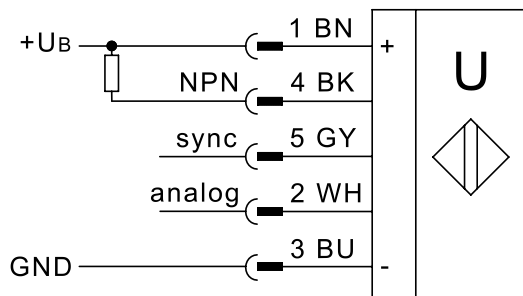
UD18.CP... / UDA18.CP...
UD18.VP... / UDA18.VP...



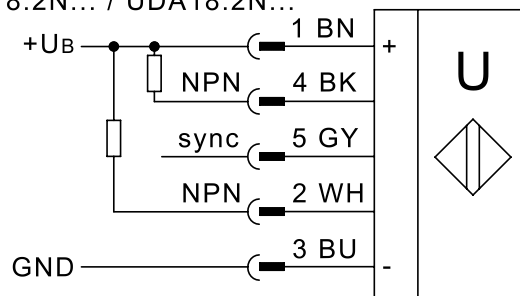
UD18.2P... / UDA18.2P...



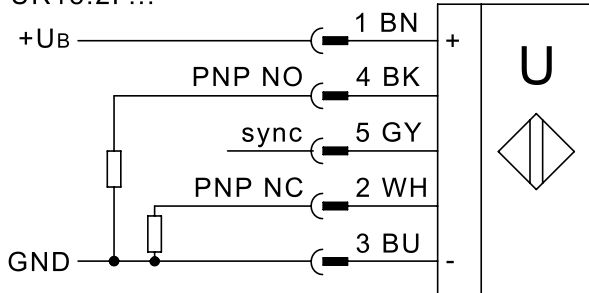
UD18.CN... / UDA18.CN...
UD18.VN... / UDA18.VN...



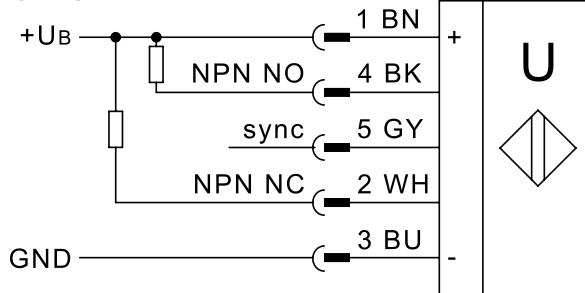
UD18.2N... / UDA18.2N...



UR18.2P...



UR18.2N...



Product options

IMAGE 1/1

ORDERING KEY

	Measurement range	Housing material		Output							Connection	Special features	
		Plastic PBT	Stainless steel DIN 1.4044	PNP	NPN	2x PNP	2x NPN	4... 20mA	0... 10V	IO-Link (push-pull)		Synchronisation	Multiplexing
Diffuse reflection sensor													
Switching output													
UDA18P2P090S	100 ... 900 mm	x				x					x	x	x
UDA18M2P090S	100 ... 900 mm		x			x					x	x	x
UDA18P2N090S	100 ... 900 mm	x					x				x	x	x
UDA18M2N090S	100 ... 900 mm		x				x				x	x	x
UDA18P2P220S	200 ... 2200 mm	x				x					x	x	x
UDA18M2P220S	200 ... 2200 mm		x			x					x	x	x
UDA18P2N220S	200 ... 2200 mm	x					x				x	x	x
UDA18M2N220S	200 ... 2200 mm		x				x				x	x	x
Switching output + analogue output													
UDA18PCP090S	100 ... 900 mm	x		x				x			x	x	x
UDA18MCP090S	100 ... 900 mm		x	x				x			x	x	x
UDA18PCN090S	100 ... 900 mm	x			x			x			x	x	x
UDA18MCN090S	100 ... 900 mm		x		x			x			x	x	x
UDA18PVP090S	100 ... 900 mm	x		x					x		x	x	x
UDA18MVP090S	100 ... 900 mm		x	x					x		x	x	x
UDA18PVN090S	100 ... 900 mm	x			x				x		x	x	x
UDA18MVN090S	100 ... 900 mm		x		x				x		x	x	x
UDA18PCP220S	200 ... 2200 mm	x		x				x			x	x	x
UDA18MCP220S	200 ... 2200 mm		x	x				x			x	x	x
UDA18PCN220S	200 ... 2200 mm	x			x			x			x	x	x
UDA18MCN220S	200 ... 2200 mm		x		x			x			x	x	x
UDA18PVP220S	200 ... 2200 mm	x		x					x		x	x	x
UDA18MVP220S	200 ... 2200 mm		x	x					x		x	x	x
UDA18PVN220S	200 ... 2200 mm	x			x				x		x	x	x
UDA18MVN220S	200 ... 2200 mm		x		x				x		x	x	x