



Alavanca de atuação para sensores de ângulo

Especificação Técnica

- Alavanca de atuação que visa facilitar a instalação de sensores de ângulo elobau

Desenho técnico

IMAGE 1/4

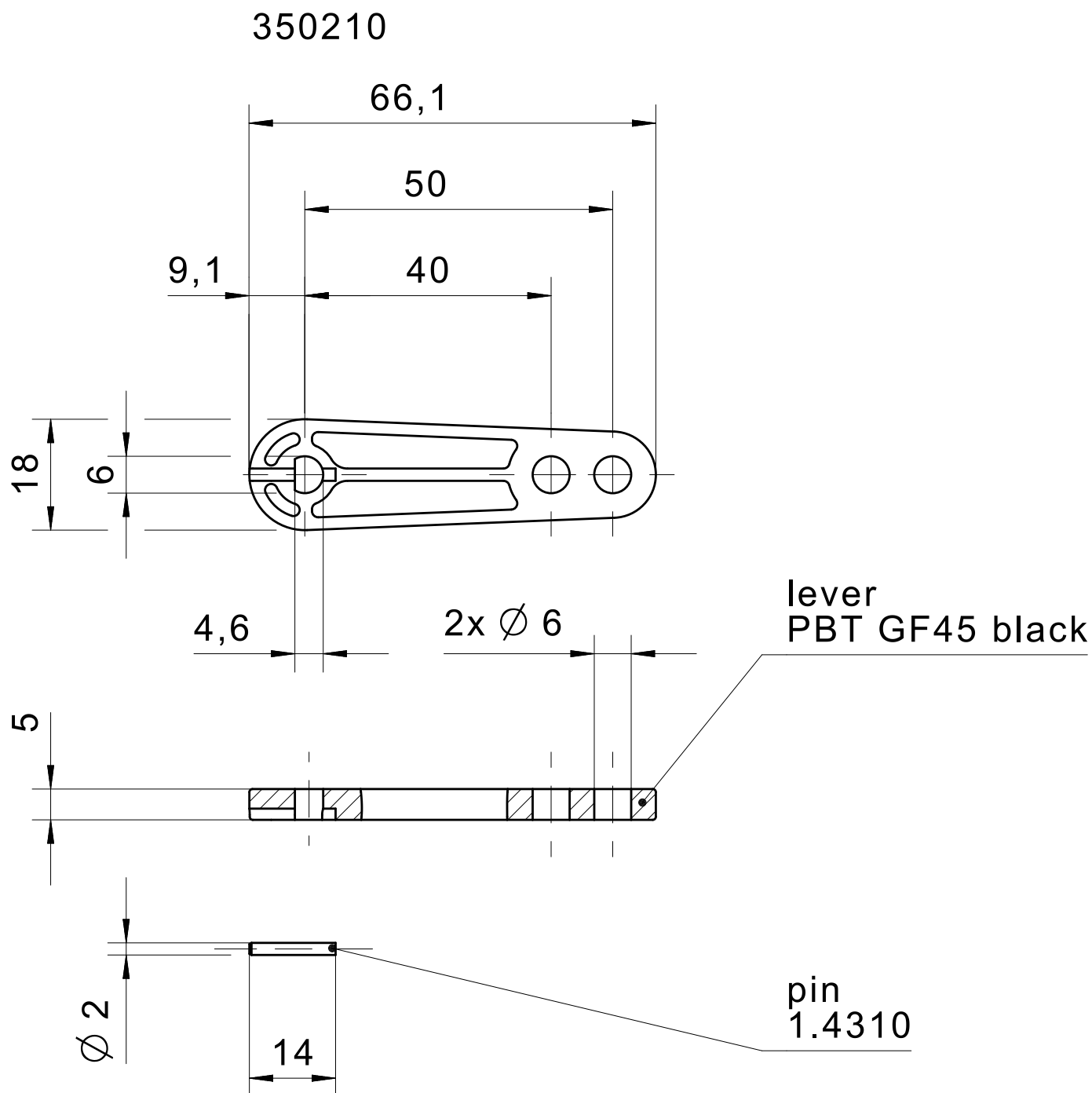


IMAGE 2/4

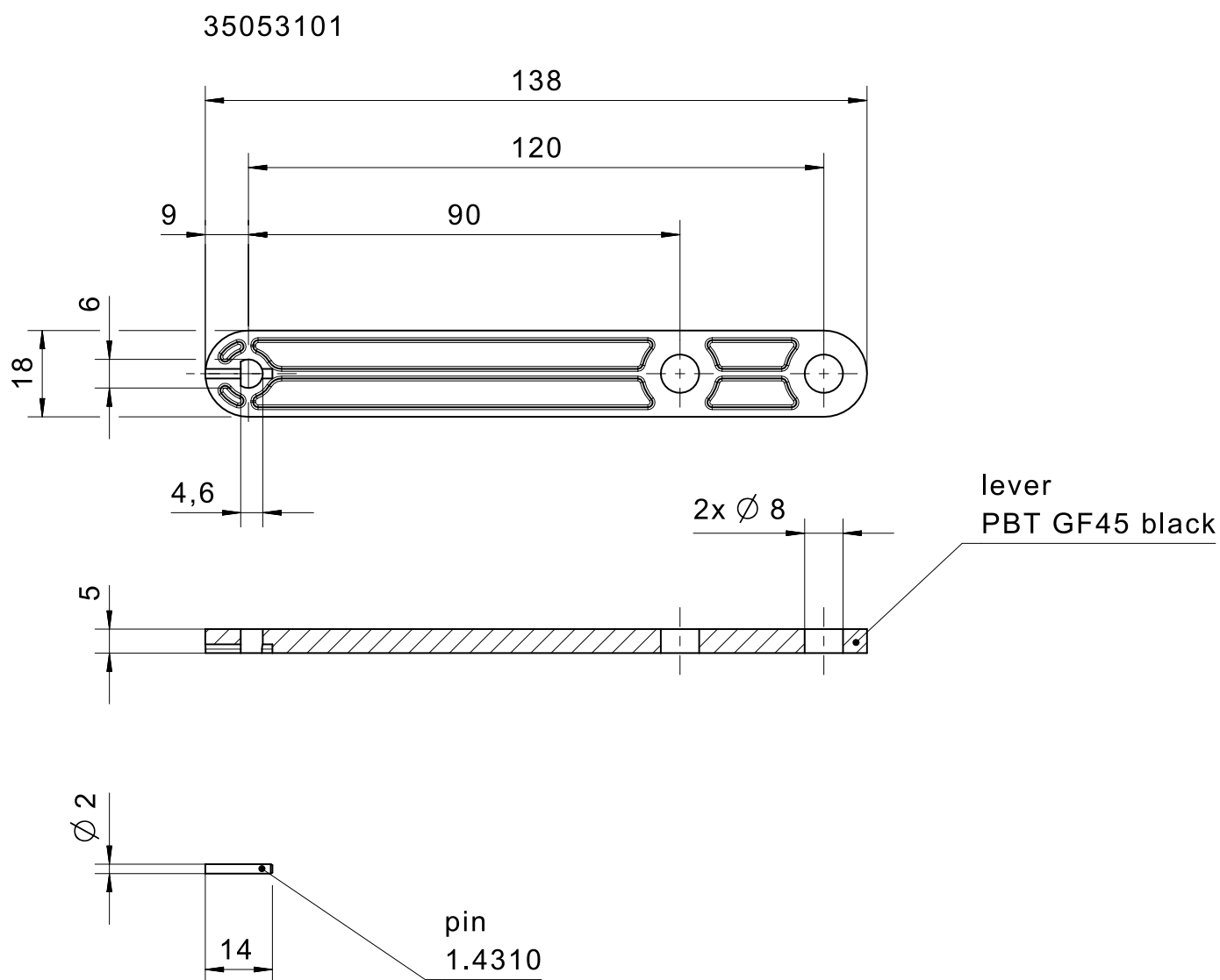


IMAGE 3/4

35053102

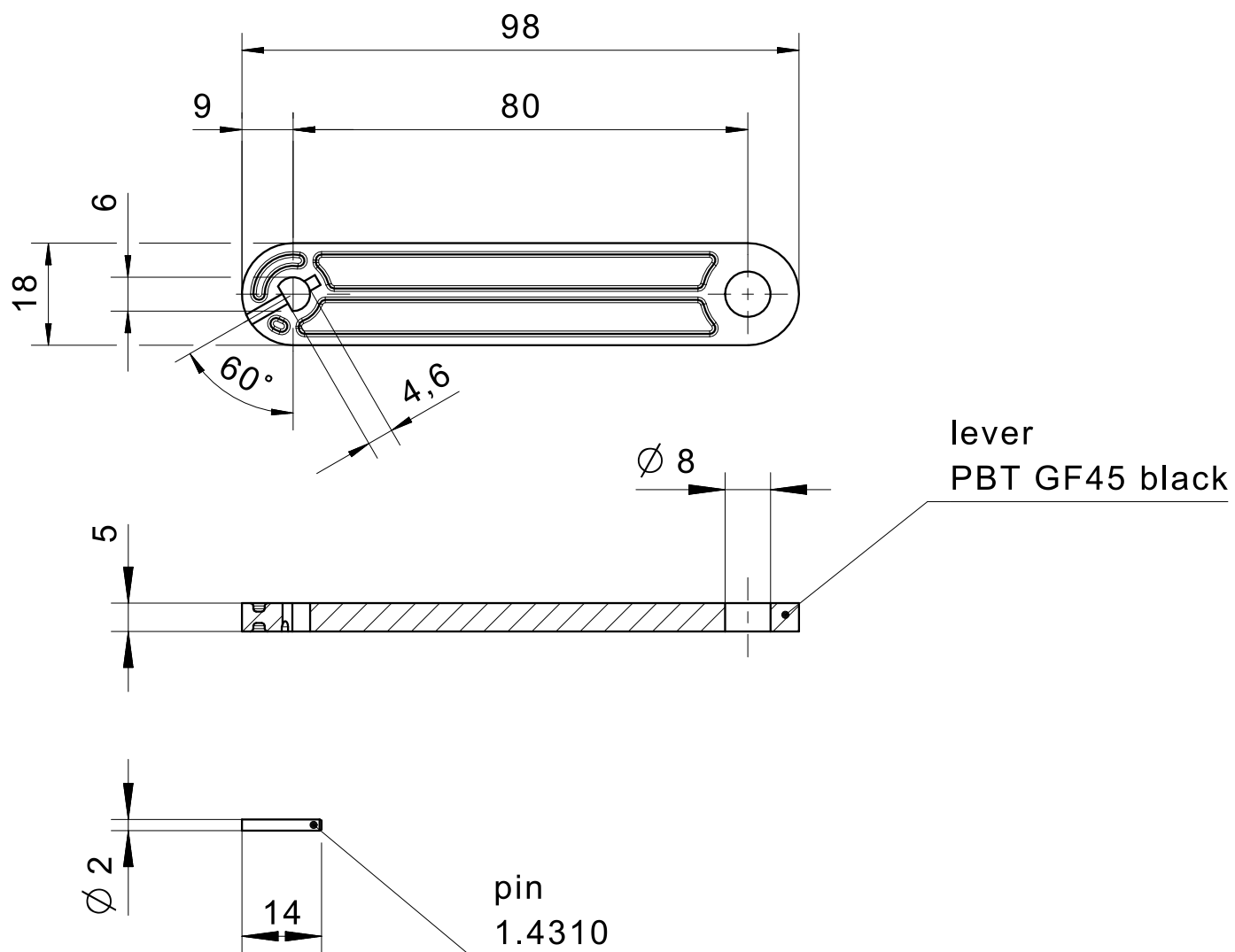
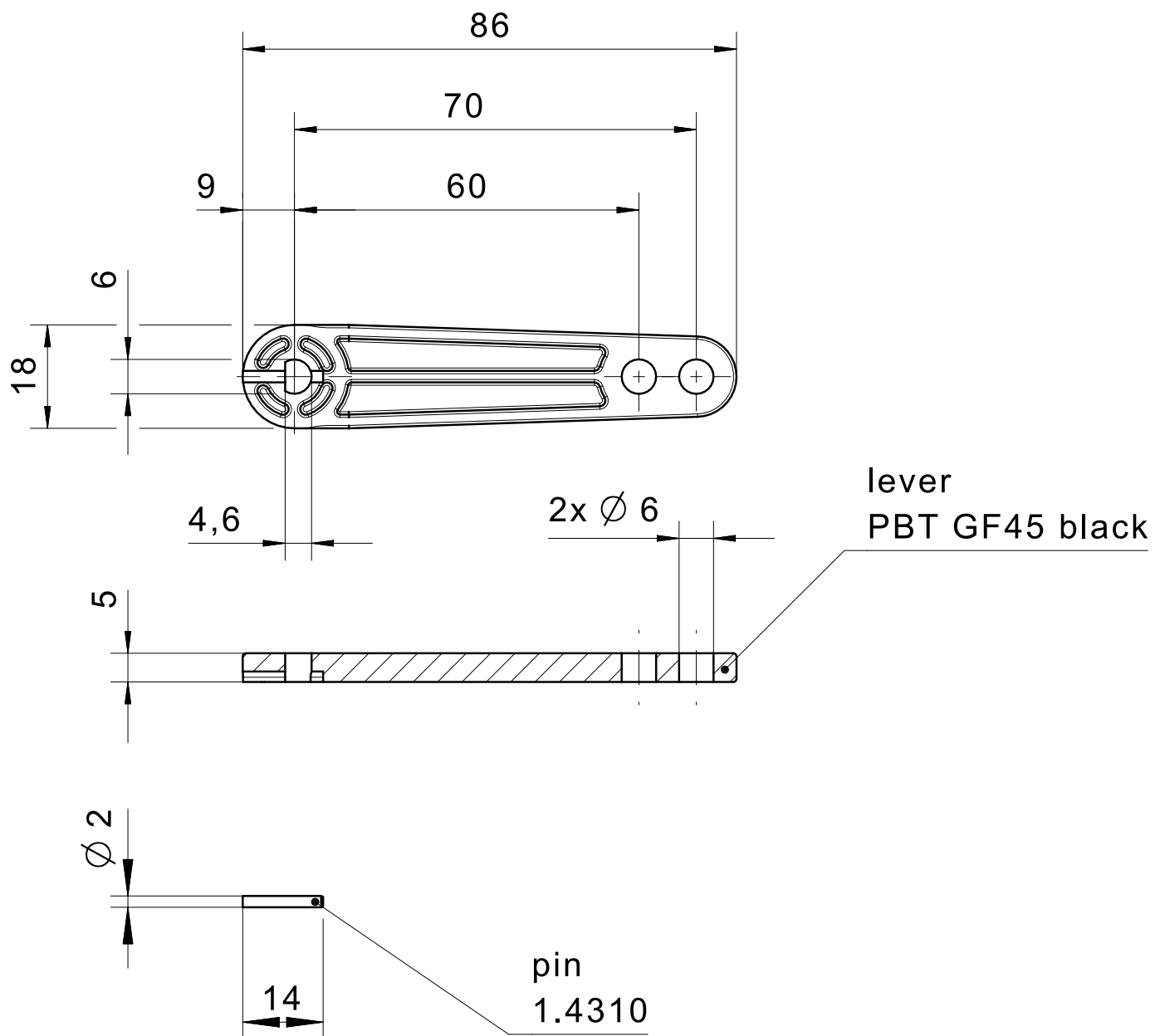


IMAGE 4/4

35053103



Properties

Attribute	350210	35053101	35053102	35053103
Included with delivery	1x Actuation lever + 1x Dowel pin			

Mechanical data

Attribute	350210	35053101	35053102	35053103
Dimensions	66,1x18x5mm / Ø2x7mm	138x18x5mm / Ø2x8mm	98x18x5mm / Ø1x8mm	86x18x5mm / Ø2x6mm

Material information

Attribute	350210	35053101	35053102	35053103
Material	PBT / 1.4310			

Installation

Attribute	350210	35053101	35053102	35053103
Mounting type	Dowel pin			