



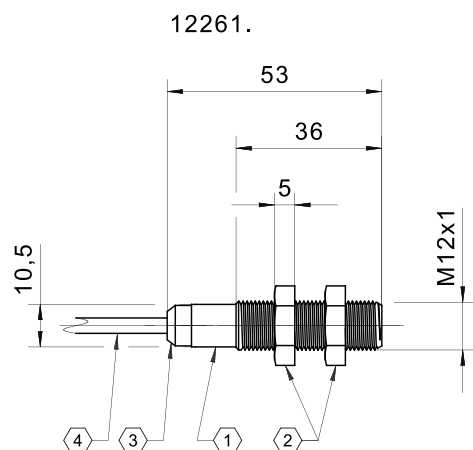
Sensor de proximidade magnético 12261

Product characteristics

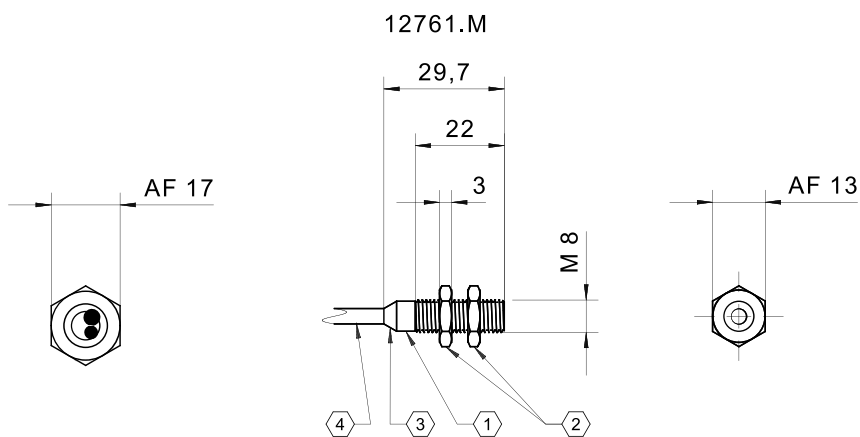
- Sensor de efeito Hall
- Formato cilíndrico com rosca externa para fácil montagem
- Carca em poliamida (PA)
- Rosca M12 x 46 mm
- Cabo em PVC

Desenho técnico

IMAGE 1/1

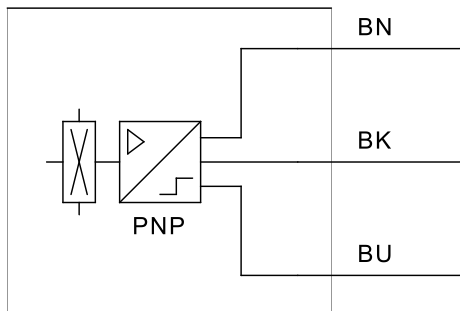


- ① housing - PA6 GK30
- ② nuts - PA6 GK30
- ③ grommet - TPE
- ④ cable - LIFY11Y 3x0,25

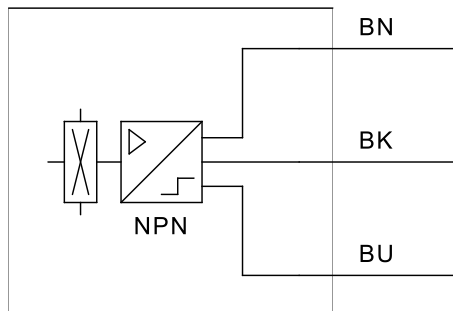


- ① housing - CW614N Ni-plated
- ② nuts - CW614N Ni-plated
- ③ grommet - TPE
- ④ cable - LIFY11Y 3x0,25

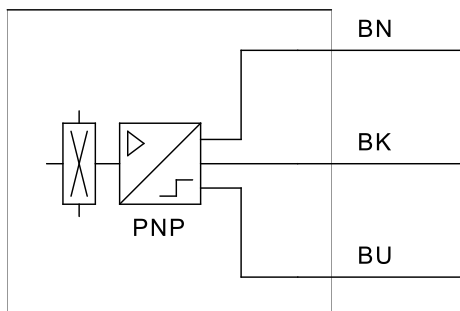
127610



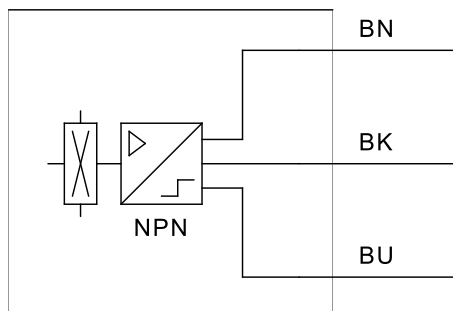
127611



127610M

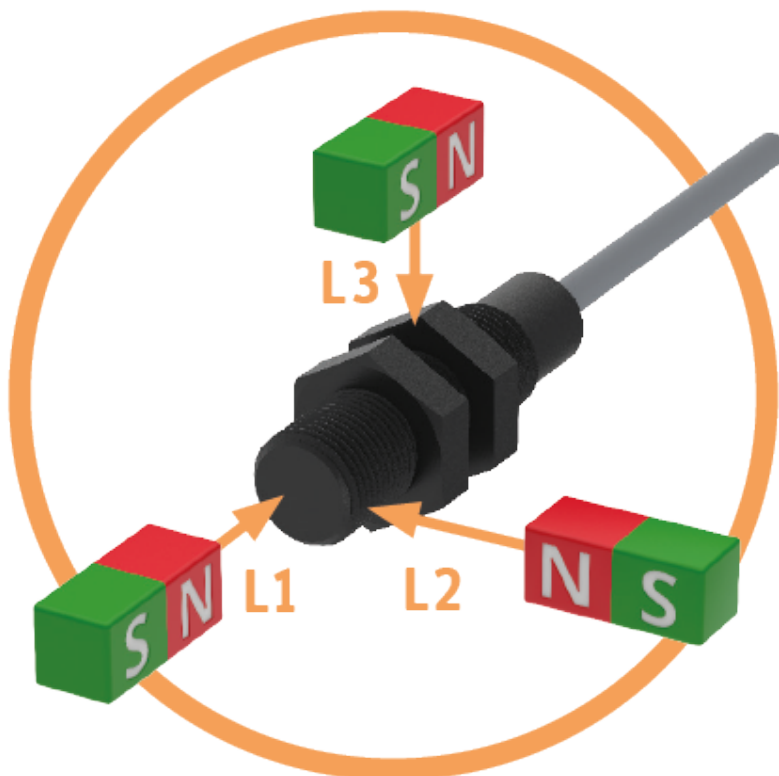


127611M



Product options

IMAGE 1/2



TYPICAL SWITCHING DISTANCES

| | 122610 | | | 122611 | | |
|-----------|--------|----|----|--------|----|----|
| ACTUATORS | L1 | L2 | L3 | L1 | L2 | L3 |
| 324790 | 6 mm | - | - | 9 mm | - | - |
| 300790 | 11 mm | - | - | 14 mm | - | - |
| 300780 | 15 mm | - | - | 18 mm | - | - |

Further actuators and switching distances on request

IMAGE 2/2

ORDERING KEY

| 122 | | | Cylindrical proximity switch, Hall |
|-----|-----|-----|--|
| | 610 | | PNP output – cable connection 1m |
| | 611 | | NPN output – cable connection 1m |
| | | | Housing with connector output on request |
| | | | |
| | | | Other available cable lengths |
| | | -3 | 3 m |
| | | -5 | 5 m |
| | | -10 | 10 m |
| | | | Other cable materials and cable lengths on request |

Características do artigo

| Attribute | 122610 | 122611 |
|--|--|----------|
| Continuous current | 0.1 A | 0.02 A |
| Technology | Hall | |
| EMC immunity (Norm) | DIN EN 60947-5-2, applicable chapter 7.2.6 | |
| EMC emission (Norm) | DIN EN 60947-5-2, applicable chapter 7.2.6 | |
| Operating voltage min. | 10 V DC | 4.5 V DC |
| Operating voltage max. | 30 V DC | 24 V DC |
| LED display | No | |
| Actuation | front | |
| Switching principle | magnetic | |
| Polarity reversal protection | yes | |
| Switching output | PNP | NPN |
| Dimensions | M12 L=46 | |
| Housing design | cylindrical | |
| Housing material | PA | |
| Nut material | PA | |
| Cable material | PVC | |
| Protection class | IP67 DIN EN 60529 | |
| Operating temperature min. | -25 °C | |
| Max. operating temperature | 75 °C | |
| Min. storage temperature | -25 °C | |
| Max. storage temperature | 75 °C | |
| Min. cable temperature range, moving | -5 °C | |
| Max. cable temperature range, moving | 70 °C | |
| Min. cable temperature range, fixed installation | -25 °C | |
| Max. cable temperature range, fixed installation | 70 °C | |
| Mounting type | Thread | |
| Cable length | 1 m | |