



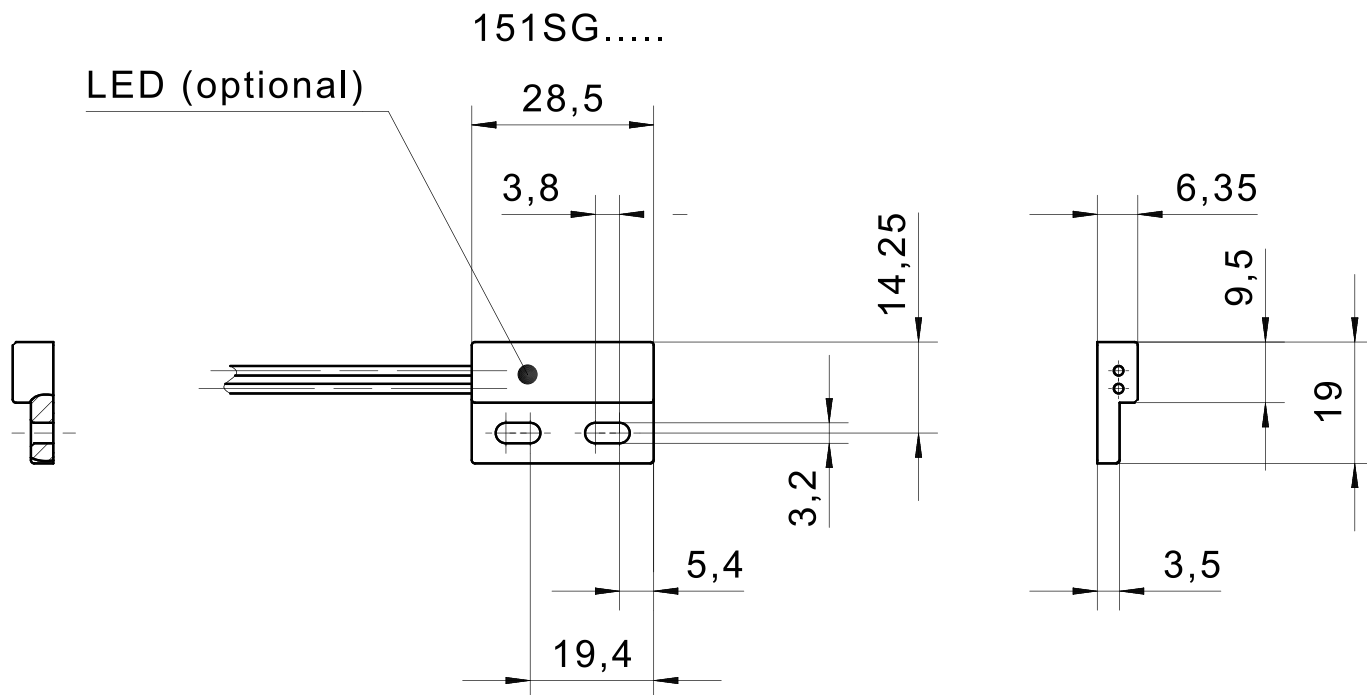
Sensor de proximidade magnético 151SG0

Especificação Técnica


- Tecnologia de sensores magnéticos (reed switch)
- LED para indicação visual de funcionamento
- Carcaça em material plástico poliamida (PA)
- Dimensões 28.5 x 19 x 6.35 mm
- Cabo em PVC

Desenho técnico


IMAGE 1/1



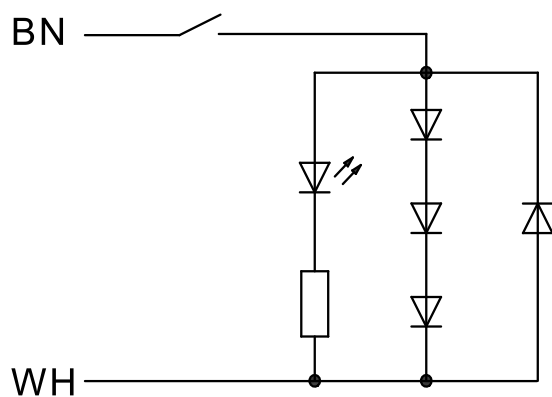
151SG010..

BK  BK

151SG020..

BK  BK

151SG01003



Product options

IMAGE 1/2



TYPICAL SWITCHING DISTANCES

	151SG010			151SG020			151SG030		
ACTUATORS	L1	L2	L3	L1	L2	L3	L1	L2	L3
324790	16 mm	14 mm	14 mm	15 mm	15 mm	12 mm	14 mm	15 mm	12 mm
324SG001S	8 mm	8 mm	17 mm	8 mm	8 mm	17 mm	7 mm	10 mm	17 mm

	151SG01003			151SG02003		
ACTUATORS	L1	L2	L3	L1	L2	L3
324790	15	8	7	12	15	11
324SG001S	9	4	13	5	8	14

Further actuators and switching
distances on request

IMAGE 2/2

ORDERING KEY

151SG0			Flat switch, reed contact
	10		N.O. – wire outlet 0.3 m
	20		N.C. – wire outlet 0.3 m
	30		C.O. – cable connection 1 m
			Other electrical data on request
			Other available cable lengths
		-3	3 m
		-5	5 m
		-10	10 m
			Other cable materials and cable lengths on request
151SG0			Flat switch with LED, reed contact
	1003	-1	N.O. – cable connection 1 m
			Other available cable lengths
		-3	3 m
		-5	5 m
		-10	10 m
			Other cable materials and cable lengths on request

Características do artigo

Attribute	151SG010	151SG01003-1	151SG020	151SG030	ED151SG010	ED151SG01003-1 ▶
Max. switching voltage	48 V DC	24 V DC	48 V DC		-	
Max. switching voltage	48 V AC	24 V AC	48 V AC		-	
Max. switching current	0.5 A	0.2 A	0.3 A		-	
Max. switching power	10 W		3 W		-	
Contact form	NO		NC	CO	-	
Technology	Reed				-	
LED display	No	Yes	No		-	
Actuation	arbitrary				-	
Switching principle	magnetic				-	
Dimensions	28,5x19x6,4				-	
Housing design	cuboid				-	
Housing material	PA6	PEI	PA6		-	
Cable material	PVC				-	
Protection class	IP67 DIN EN 60529				-	
Operating temperature min.	-25 °C				-	
Max. operating temperature	70 °C	75 °C	70 °C	75 °C	-	
Min. storage temperature	-25 °C				-	
Max. storage temperature	70 °C	75 °C	70 °C		-	
Min. cable temperature range, moving	-5 °C	-10 °C		-5 °C	-	
Max. cable temperature range, moving	70 °C	90 °C	70 °C		-	
Min. cable temperature range, fixed installation	-30 °C	-25 °C	-30 °C	-25 °C	-	
Max. cable temperature range, fixed installation	70 °C	90 °C	70 °C		-	
Mounting type	screwed				-	
Cable length	0.3 m	2 m	0.3 m	1 m	-	

Attribute	ED151SG020	ED151SG030
Max. switching voltage	-	-
Max. switching voltage	-	-
Max. switching current	-	-
Max. switching power	-	-
Contact form	-	-
Technology	-	-
LED display	-	-
Actuation	-	-
Switching principle	-	-
Dimensions	-	-
Housing design	-	-
Housing material	-	-
Cable material	-	-
Protection class	-	-
Operating temperature min.	-	-
Max. operating temperature	-	-
Min. storage temperature	-	-
Max. storage temperature	-	-
Min. cable temperature range, moving	-	-
Max. cable temperature range, moving	-	-
Min. cable temperature range, fixed installation	-	-
Max. cable temperature range, fixed installation	-	-
Mounting type	-	-
Cable length	-	-