



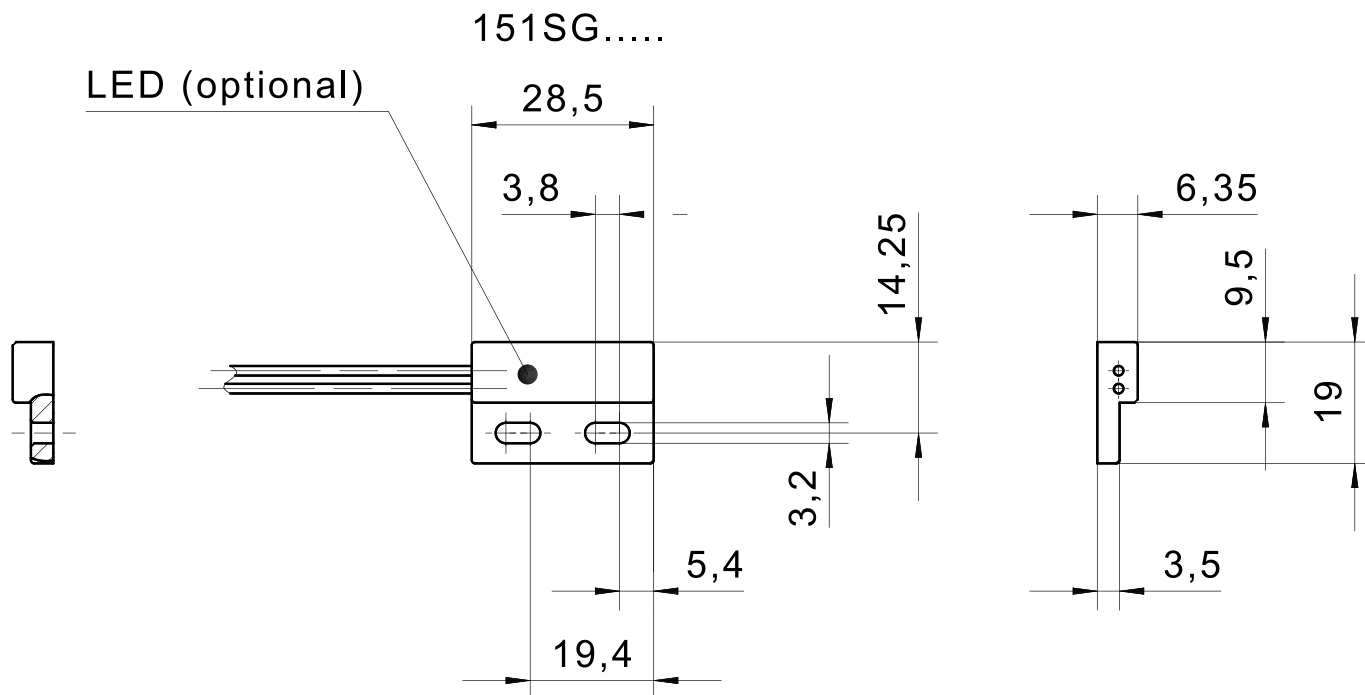
Sensor de proximidade magnético 151SG0

Especificação Técnica


- Tecnologia de sensores magnéticos (reed switch)
- LED para indicação visual de funcionamento
- Carcaça em material plástico poliamida (PA)
- Dimensões 28.5 x 19 x 6.35 mm
- Cabo em PVC

Desenho técnico

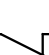
IMAGE 1/1



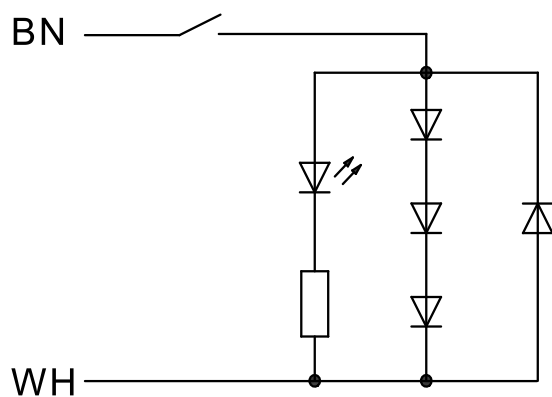
151SG010..

BK  BK

151SG020..

BK  BK

151SG01003



Product options

IMAGE 1/2



TYPICAL SWITCHING DISTANCES

| | 151SG010 | | | 151SG020 | | | 151SG030 | | |
|-----------|----------|-------|-------|----------|-------|-------|----------|-------|-------|
| ACTUATORS | L1 | L2 | L3 | L1 | L2 | L3 | L1 | L2 | L3 |
| 324790 | 16 mm | 14 mm | 14 mm | 15 mm | 15 mm | 12 mm | 14 mm | 15 mm | 12 mm |
| 324SG001S | 8 mm | 8 mm | 17 mm | 8 mm | 8 mm | 17 mm | 7 mm | 10 mm | 17 mm |

| | 151SG01003 | | | 151SG02003 | | |
|-----------|------------|----|----|------------|----|----|
| ACTUATORS | L1 | L2 | L3 | L1 | L2 | L3 |
| 324790 | 15 | 8 | 7 | 12 | 15 | 11 |
| 324SG001S | 9 | 4 | 13 | 5 | 8 | 14 |

Further actuators and switching
distances on request

IMAGE 2/2

ORDERING KEY

| 151SG0 | | | Flat switch, reed contact |
|--------|------|-----|--|
| | 10 | | N.O. – wire outlet 0.3 m |
| | 20 | | N.C. – wire outlet 0.3 m |
| | 30 | | C.O. – cable connection 1 m |
| | | | Other electrical data on request |
| | | | |
| | | | Other available cable lengths |
| | | -3 | 3 m |
| | | -5 | 5 m |
| | | -10 | 10 m |
| | | | Other cable materials and cable lengths on request |
| | | | |
| 151SG0 | | | Flat switch with LED, reed contact |
| | 1003 | -1 | N.O. – cable connection 1 m |
| | | | |
| | | | Other available cable lengths |
| | | -3 | 3 m |
| | | -5 | 5 m |
| | | -10 | 10 m |
| | | | Other cable materials and cable lengths on request |

Características do artigo

| Attribute | 151SG010 | 151SG01003-1 | 151SG020 | 151SG030 | ED151SG010 | ED151SG01003-1 ▶ |
|--|-------------------|--------------|----------|----------|------------|------------------|
| Max. switching voltage | 48 V DC | 24 V DC | 48 V DC | | - | |
| Max. switching voltage | 48 V AC | 24 V AC | 48 V AC | | - | |
| Max. switching current | 0.5 A | 0.2 A | 0.3 A | | - | |
| Max. switching power | 10 W | | 3 W | | - | |
| Contact form | NO | | NC | CO | - | |
| Technology | Reed | | | | - | |
| LED display | No | Yes | No | | - | |
| Actuation | arbitrary | | | | - | |
| Switching principle | magnetic | | | | - | |
| Dimensions | 28,5x19x6,4 | | | | - | |
| Housing design | cuboid | | | | - | |
| Housing material | PA6 | PEI | PA6 | | - | |
| Cable material | PVC | | | | - | |
| Protection class | IP67 DIN EN 60529 | | | | - | |
| Operating temperature min. | -25 °C | | | | - | |
| Max. operating temperature | 70 °C | 75 °C | 70 °C | 75 °C | - | |
| Min. storage temperature | -25 °C | | | | - | |
| Max. storage temperature | 70 °C | 75 °C | 70 °C | | - | |
| Min. cable temperature range, moving | -5 °C | -10 °C | | -5 °C | - | |
| Max. cable temperature range, moving | 70 °C | 90 °C | 70 °C | | - | |
| Min. cable temperature range, fixed installation | -30 °C | -25 °C | -30 °C | -25 °C | - | |
| Max. cable temperature range, fixed installation | 70 °C | 90 °C | 70 °C | | - | |
| Mounting type | screwed | | | | - | |
| Cable length | 0.3 m | 2 m | 0.3 m | 1 m | - | |

| Attribute | ED151SG020 | ED151SG030 |
|--|------------|------------|
| Max. switching voltage | - | - |
| Max. switching voltage | - | - |
| Max. switching current | - | - |
| Max. switching power | - | - |
| Contact form | - | - |
| Technology | - | - |
| LED display | - | - |
| Actuation | - | - |
| Switching principle | - | - |
| Dimensions | - | - |
| Housing design | - | - |
| Housing material | - | - |
| Cable material | - | - |
| Protection class | - | - |
| Operating temperature min. | - | - |
| Max. operating temperature | - | - |
| Min. storage temperature | - | - |
| Max. storage temperature | - | - |
| Min. cable temperature range, moving | - | - |
| Max. cable temperature range, moving | - | - |
| Min. cable temperature range, fixed installation | - | - |
| Max. cable temperature range, fixed installation | - | - |
| Mounting type | - | - |
| Cable length | - | - |