



Boia de nível magnética 205KS

Devido à seu design compacto e medição confiável, a boia de nível elobau modelo 205KS com rosca G 1/2 é ideal para aplicação em equipamentos móbil e controle de processos industriais. A boias de nível elobau podem ser personalizadas de acordo com a sua necessidade através de forma simples e rápida em nosso configurador de produto on-line.

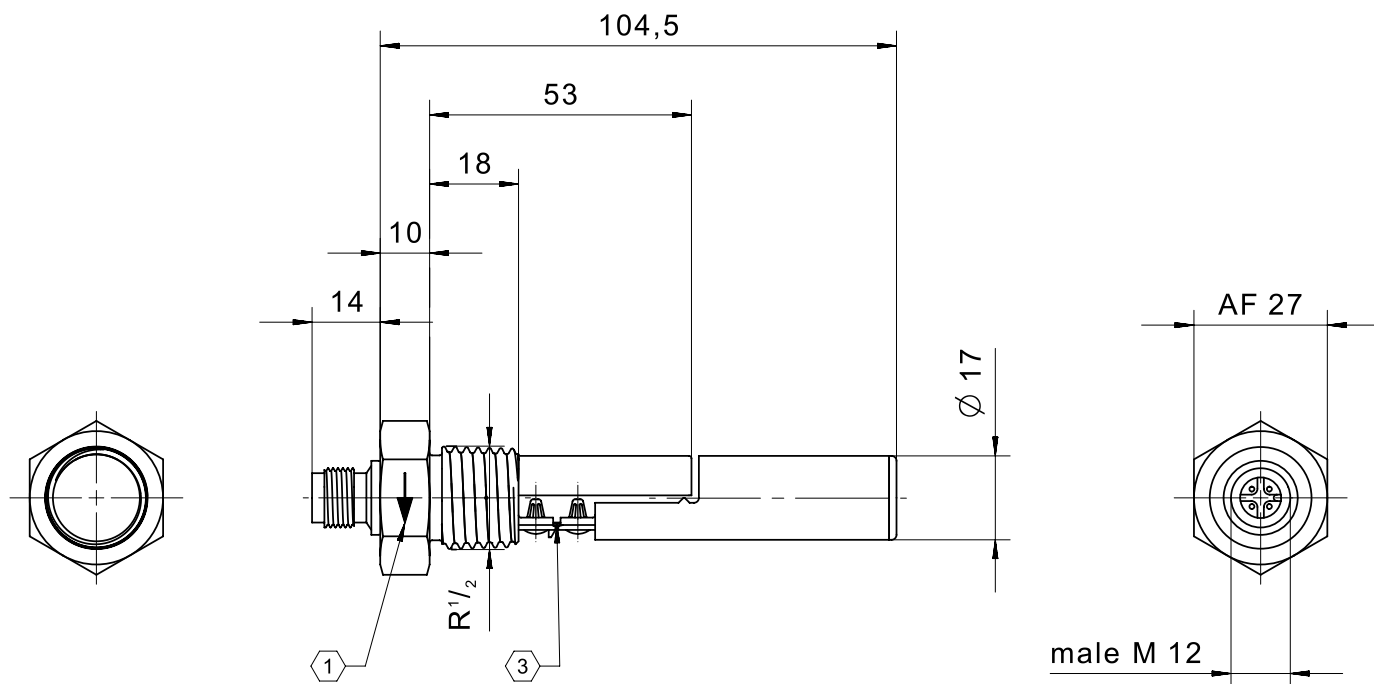
Especificação Técnica

- Design compacto
- O sistema de dobradiça com Teflon permite trabalhar em aplicações com alta viscosidade
- Material: PP ou PVDF
- Opções de montagem: rosca G 1/2 ou borracha compressível
- Disponível com conector M12 ou saída à cabo
- Tipo de contato: NA, NF ou changeover
- Temperatura de trabalho de -25 °C até +105 °C
- Tensão máx. 250V
- Classe de proteção IP67

Desenho técnico

IMAGE 1/9

205KS..2..



① marking for mounting position

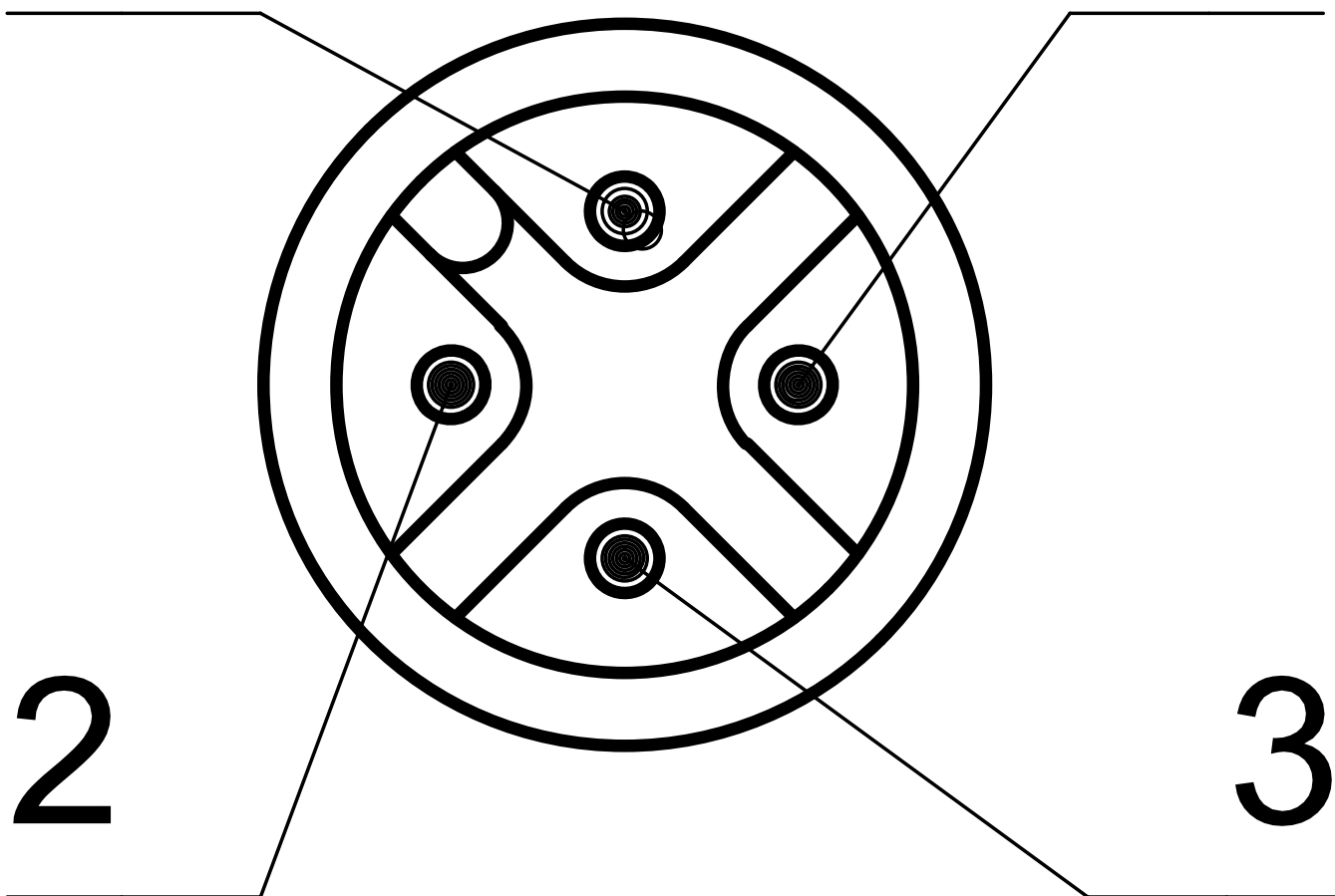
③ hinge made from PTFE

IMAGE 2/9

male M12

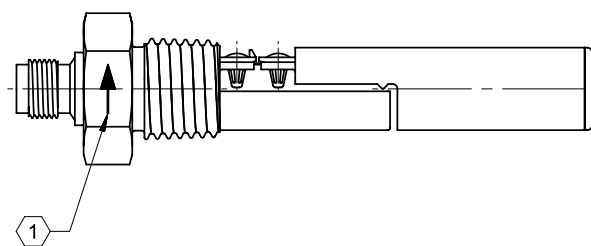
1

4

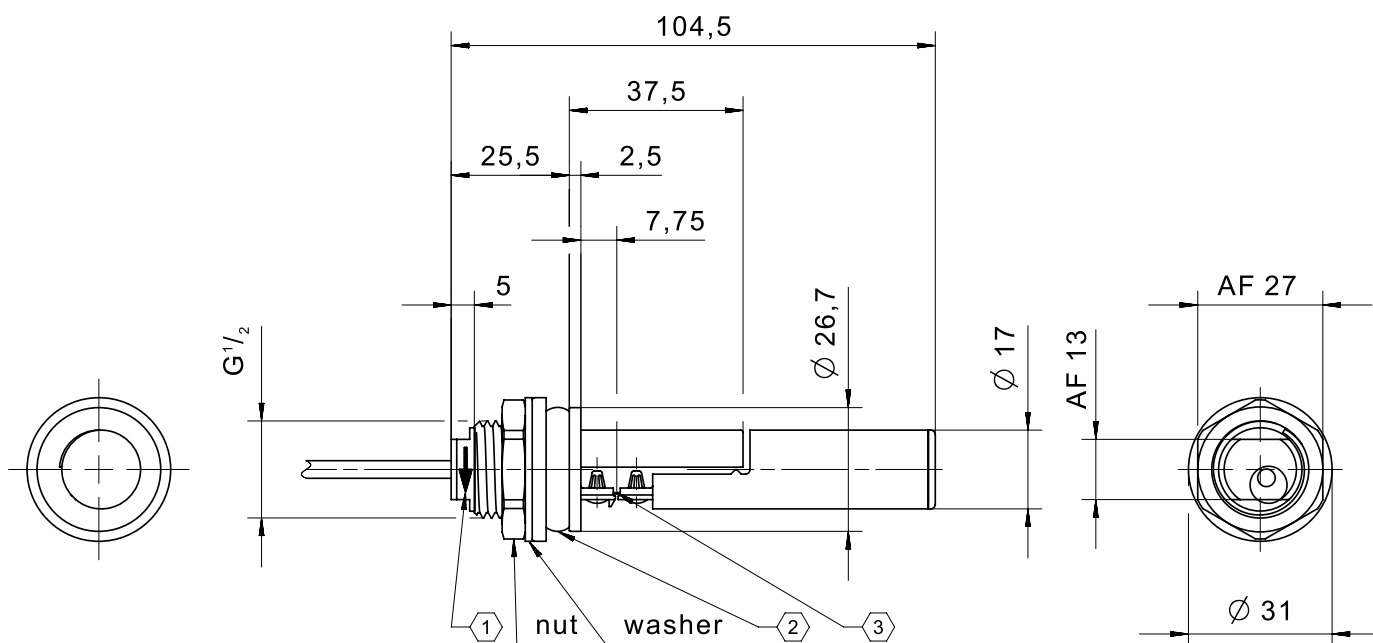


2

3



205KS..D..



- ① marking for mounting position
- ② compression grommet for maximum wall thickness 3 and hole $\varnothing 27$ till $\varnothing 28$
- ③ hinge made from PTFE

IMAGE 5/9

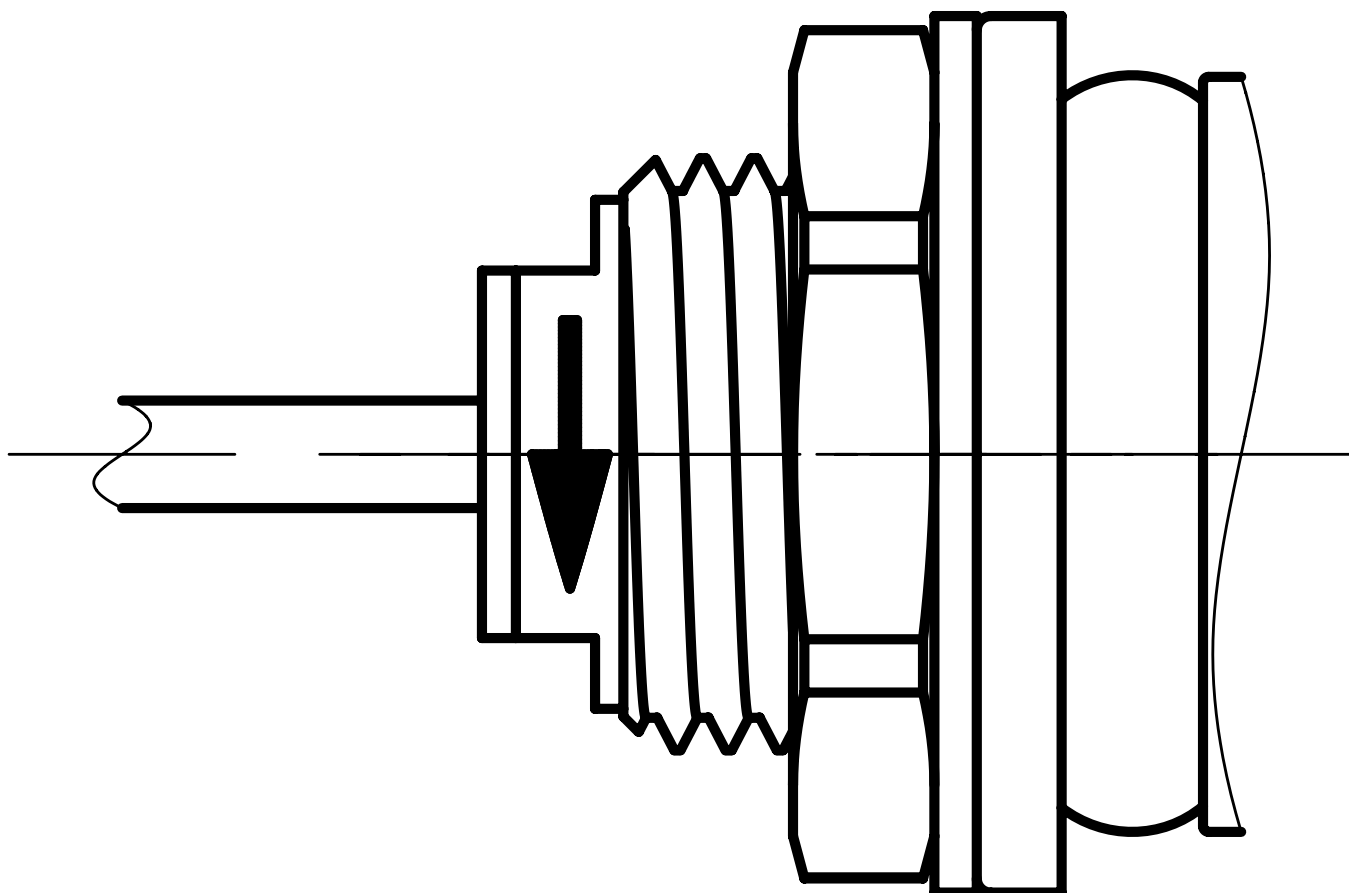


IMAGE 6/9



205KS0.D.....
205KS1.D.....

BN ———— WH

205KS2.D.....

BN ———— GN
 WH



205KS0.D.....
205KS1.D.....

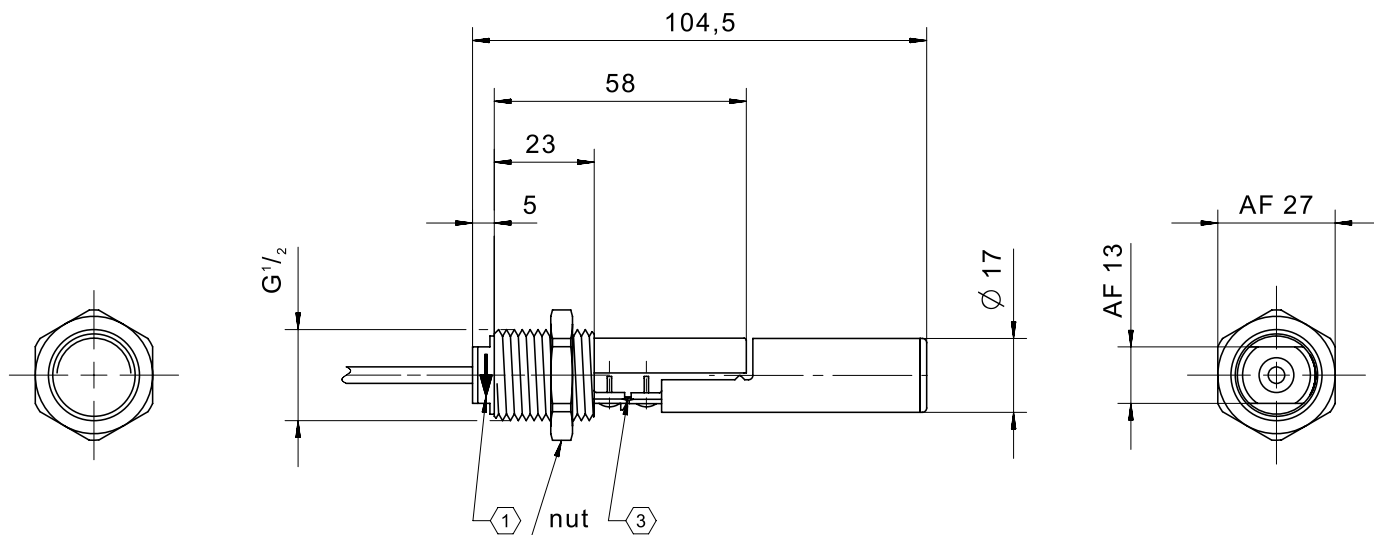
BN ———— WH

205KS2.D.....

BN ———— GN
 WH

IMAGE 7/9

205KS..G..



① marking for mounting position

③ hinge made from PTFE

IMAGE 8/9

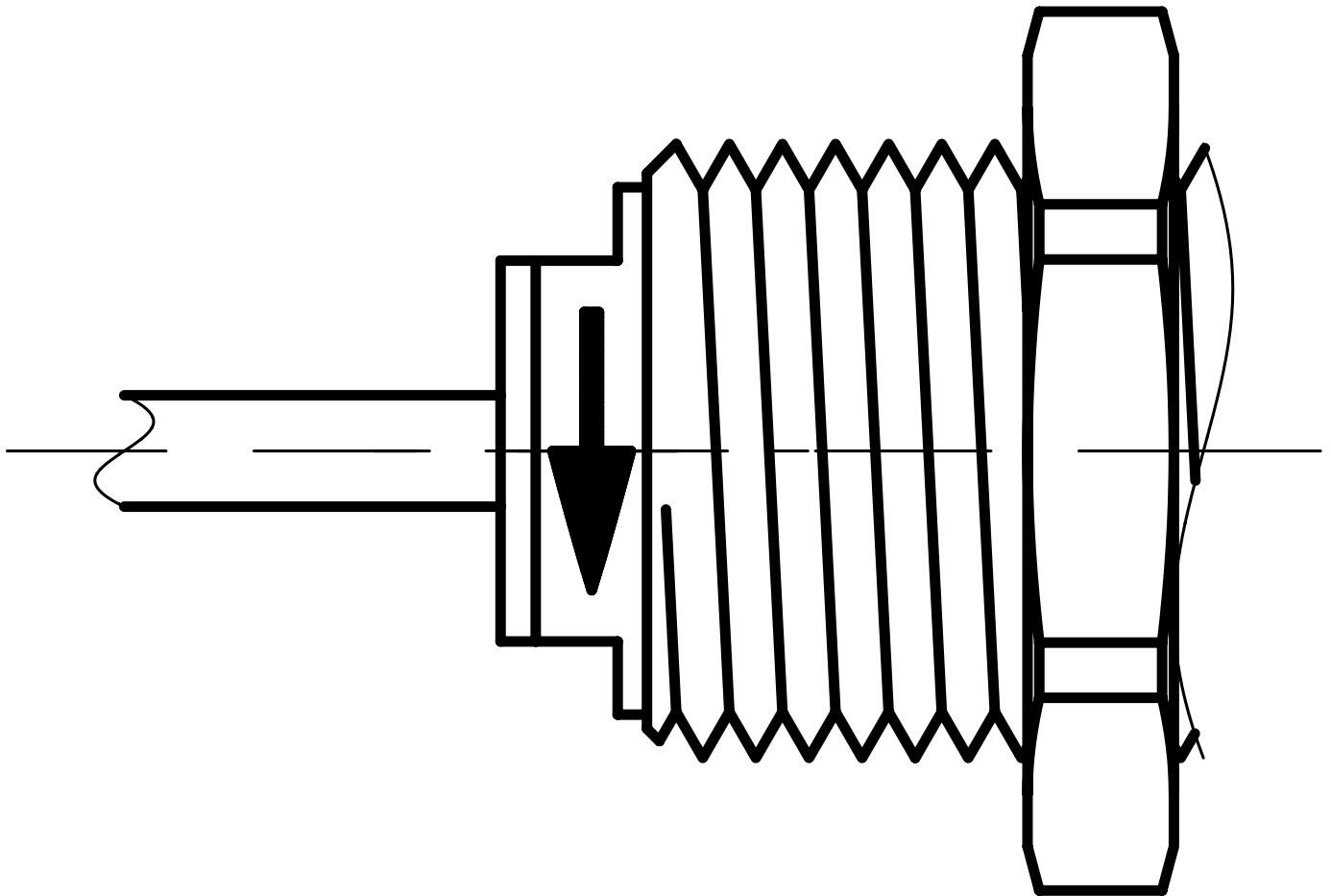
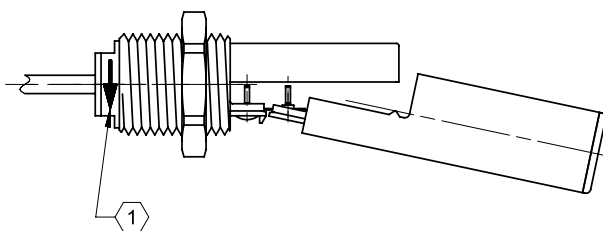


IMAGE 9/9

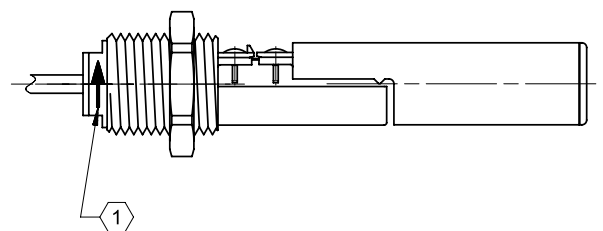


205KS0.G.....
205KS1.G.....

BN ———— WH

205KS2.G.....

BN ———— GN
 WH



205KS0.G.....
205KS1.G.....

BN ———— WH

205KS2.G.....

BN ———— GN
 WH

Product options

IMAGE 1/1

ORDERING KEY

205KS					Float switch side mount, Teflon hinge	
					Contact form	
	1				N.O./N.C. max. 250V	
	2				C.O. max. 48V	
					Housing material	
		2			PP	
		3			PVDF*	* Only for connection 0
					Connections	
			0		Connection thread R1/2, PVC cable connection 1 m, limit stop	
			2		Connection thread R1/2, M12 connector*	* Only with material: PP
			D		Connection thread G1/2, PVC cable connection 1m, compression grommet	
			G		Connection thread G1/2, PVC cable connection 1 m	
					Other cable lengths*	* Only for connections 0, D and G
			-3		Cable length 3m	
			-5		Cable length 5m	
			-10		Cable length 10m	

Optional

More materials for housings, cable sheathing on request

Características do artigo

Attribute	205KS12D	205KS12G	205KS120	205KS122	205KS22D	205KS22G ▶
Max. switching voltage	250 V DC				48 V DC	
Max. switching voltage	250 V AC				48 V AC	
Max. switching current	1 A				0.25 A	
Max. switching power	50 W				3 W	
Contact form	1A or 1B				1C	
Output signal	digital					
Technology	Reed					
Float diameter	17 mm					
Version	Teflon hinge					
Housing material	PP					
Float material	PP					
Cable material	PVC			-	PVC	
Operating temperature min.	-25 °C					
Max. operating temperature	105 °C					
Pressure resistance	3 bar					
Protection class outside container	IP67 DIN EN 60529					
Protection class inside container	IP68 DIN EN 60529					
Mounting type	Thread					
Thread	G 1/2					
Installation opening	G1/2	G 1/2	G1/2	G 1/2	G1/2	
Connector type	-			M12	-	
Cable length	1 m			-	1 m	

Características do artigo

Attribute	205KS220
Max. switching voltage	48 V DC
Max. switching voltage	48 V AC
Max. switching current	0.25 A
Max. switching power	3 W
Contact form	1C
Output signal	digital
Technology	Reed
Float diameter	17 mm
Version	Teflon hinge
Housing material	PP
Float material	PP
Cable material	PVC
Operating temperature min.	-25 °C
Max. operating temperature	105 °C
Pressure resistance	3 bar
Protection class outside container	IP67 DIN EN 60529
Protection class inside container	IP68 DIN EN 60529
Mounting type	Thread
Thread	G 1/2
Installation opening	G1/2
Connector type	-
Cable length	1 m