



Boia de nível magnética 204KS

Devido à seu design compacto e medição confiável, a boia de nível elobau modelo 204KS com junta mecânica de fixação é ideal para aplicação em equipamentos móbil e controle de processos industriais. A boias de nível elobau podem ser personalizadas de acordo com a sua necessidade através de forma simples e rápida em nosso configurador de produto on-line.

Especificação Técnica

- Design compacto
- O sistema de dobradiça mecânica permite trabalhar em aplicações com elevado fluxo de líquidos
- Material: PP ou PA12
- Opções de montagem: rosca G 1/2 ou borracha compressível
- Disponível com conector M12 ou saída à cabo
- Tipo de contato: NA, NF ou changeover
- Temperatura de trabalho de -25 °C até +105 °C
- Tensão máx. 250V
- Classe de proteção IP67

Desenho técnico

IMAGE 1/12

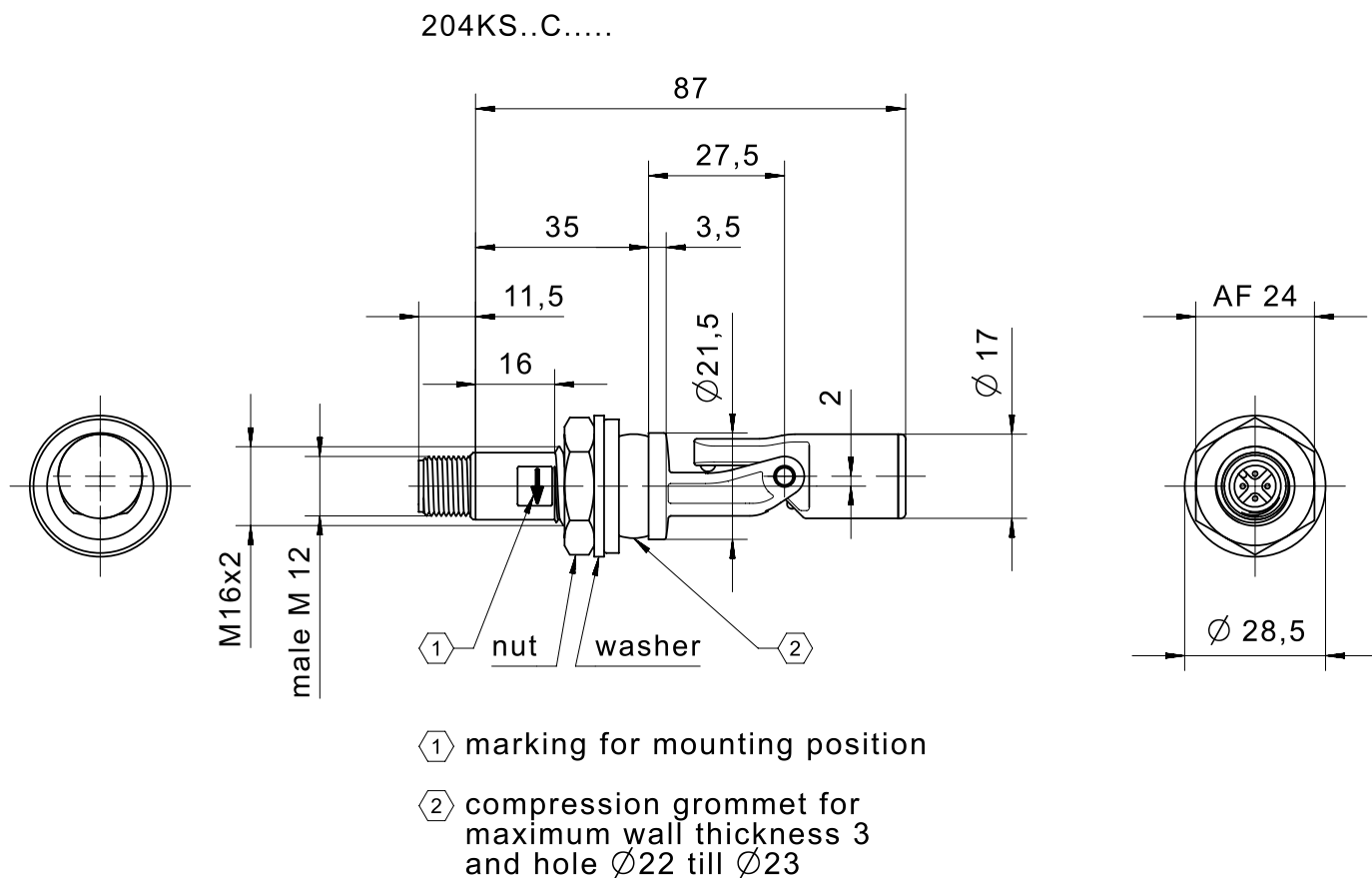


IMAGE 2/12

male M12

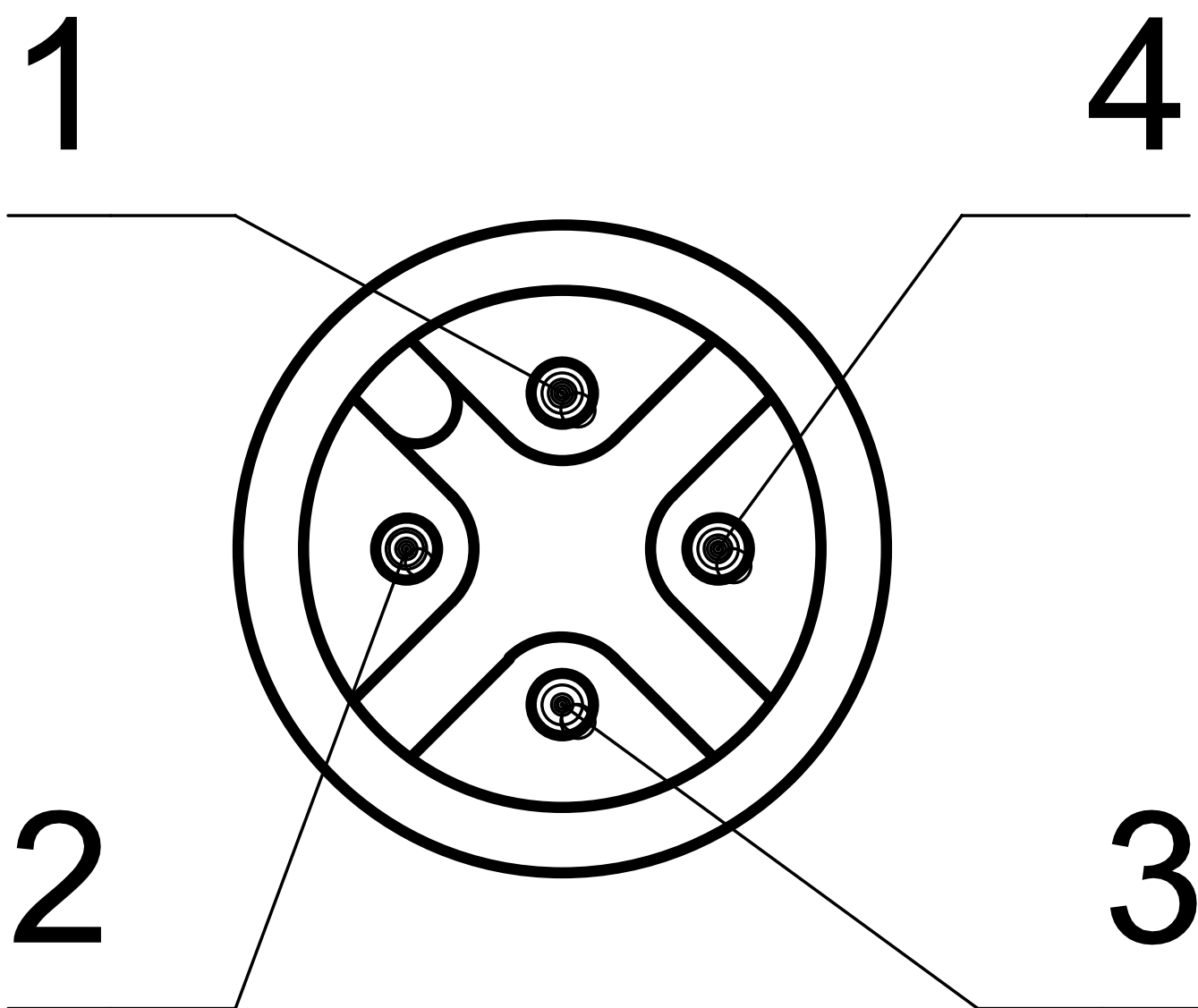
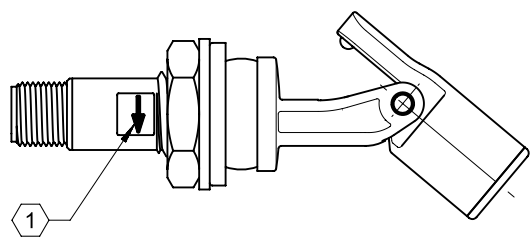


IMAGE 3/12

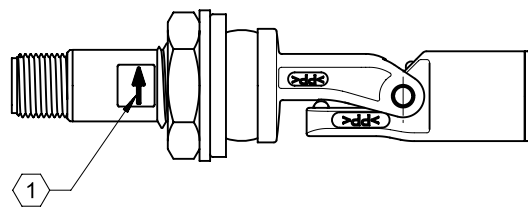


204KS0.C.....
204KS1.C.....

3 ——— 1

204KS2.C.....

3 ——— 4
3 ——— 1



204KS0.C.....
204KS1.C.....

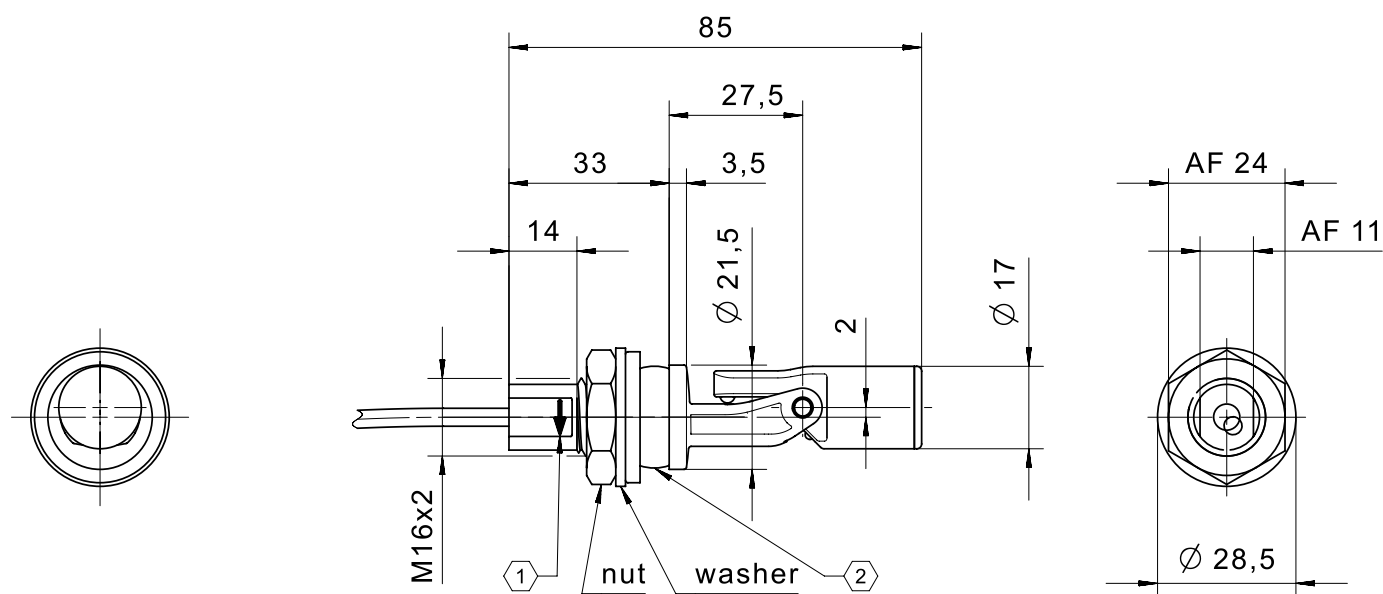
3 ——— 1

204KS2.C.....

3 ——— 4
3 ——— 1

IMAGE 4/12

204KS..D.....



① marking for mounting position

② compression grommet for
maximum wall thickness 3
and hole Ø22 till Ø23

IMAGE 5/12

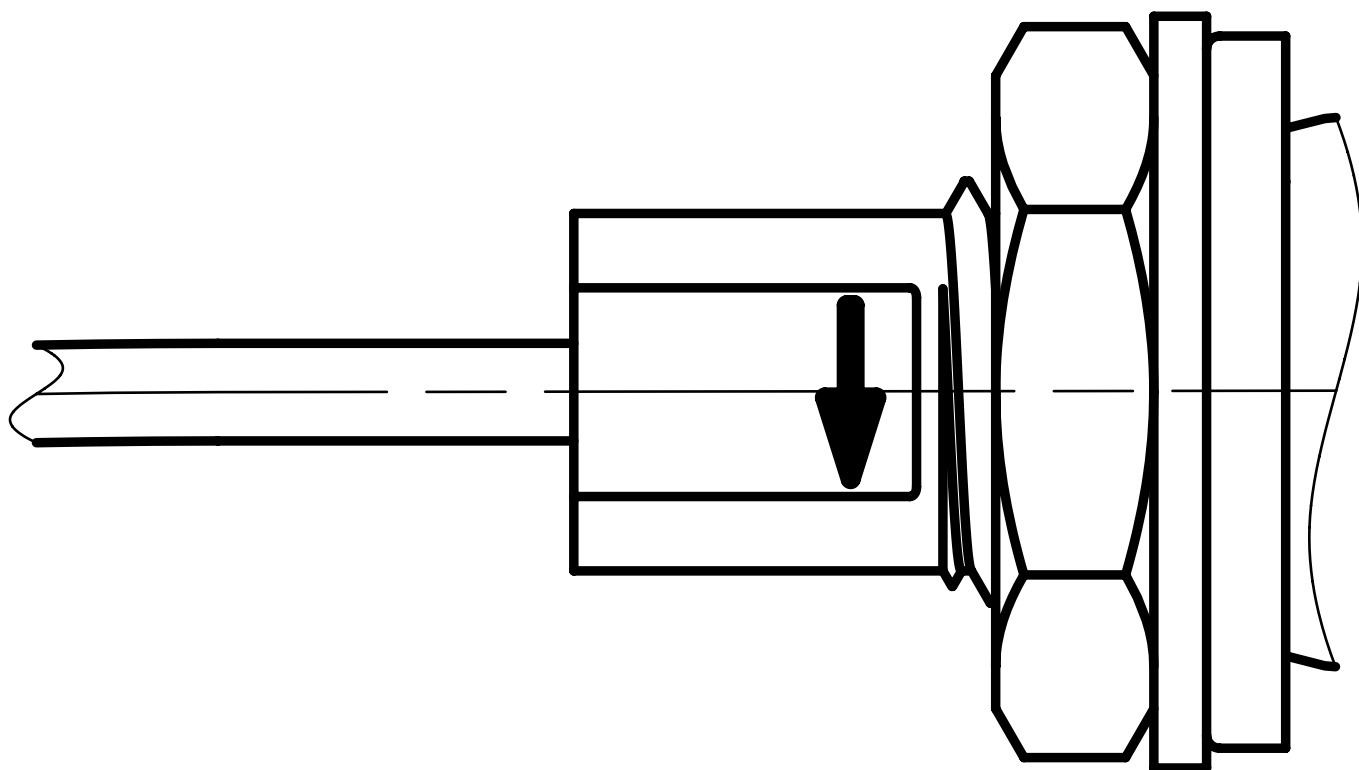
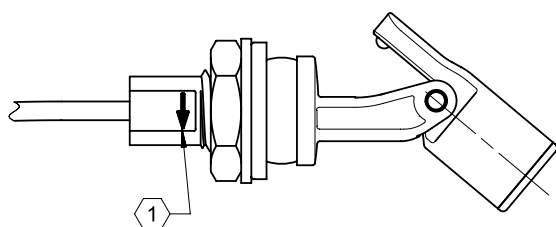


IMAGE 6/12

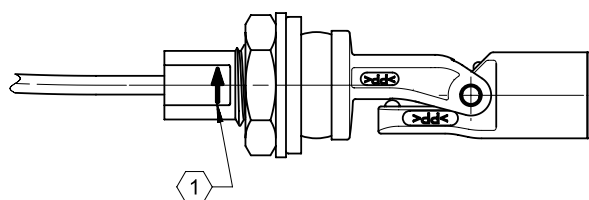


204KS0.D.....
204KS1.D.....

BN ———— WH

204KS2.D.....

BN ———— GN
BN ———— WH



204KS0.D.....
204KS1.D.....

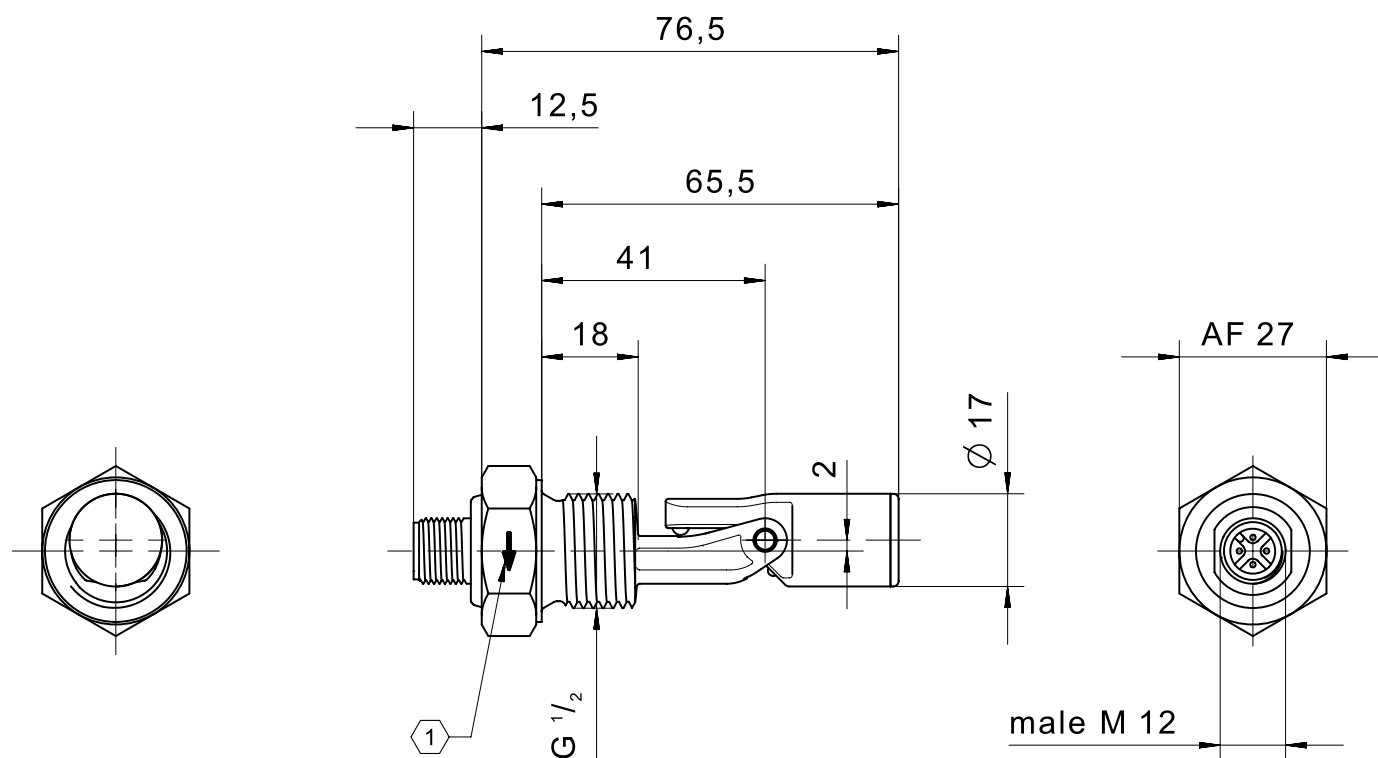
BN ———— WH

204KS2.D.....

BN ———— GN
BN ———— WH

IMAGE 7/12

204KS..E.....




 marking for mounting position

IMAGE 8/12

male M12

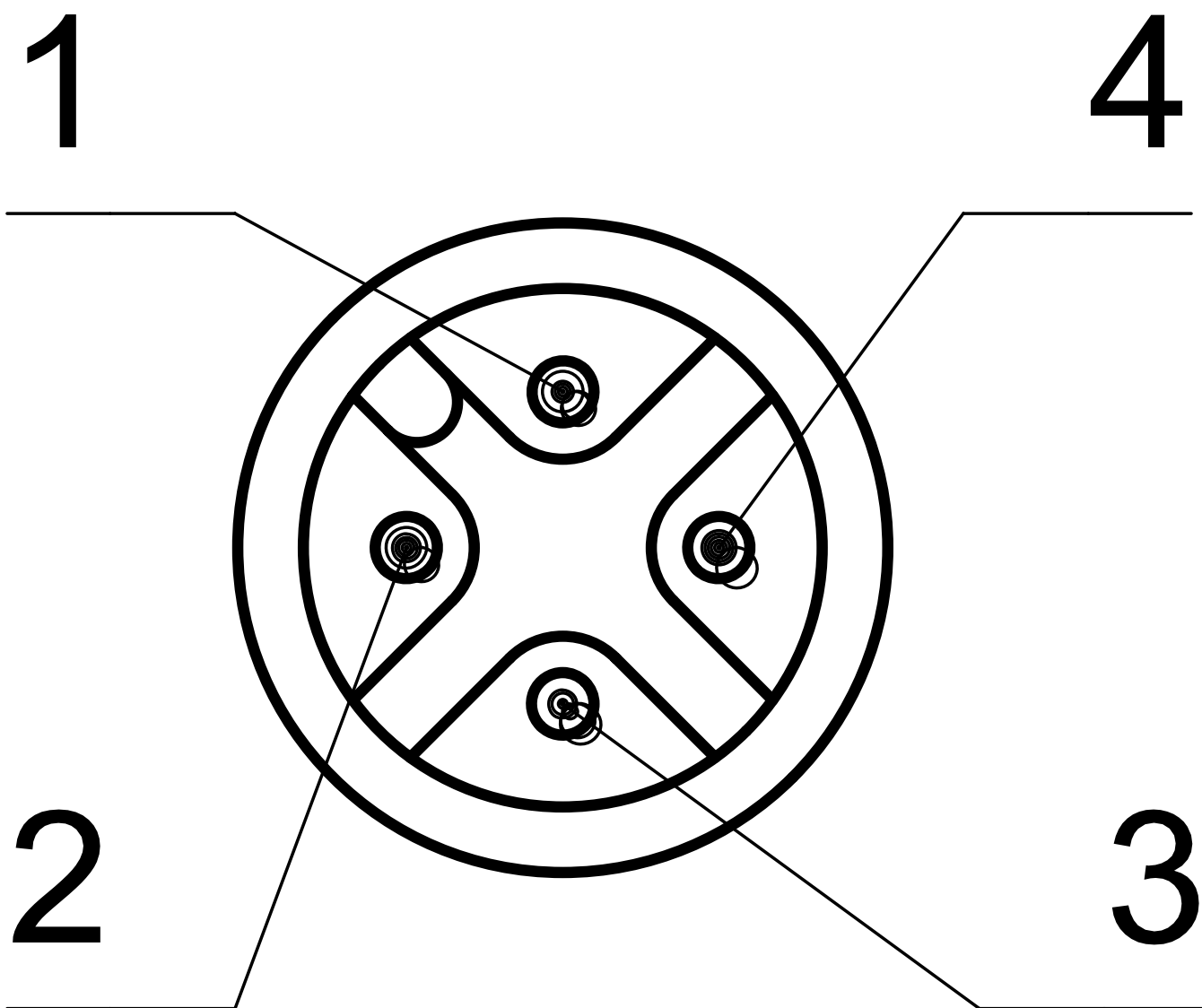
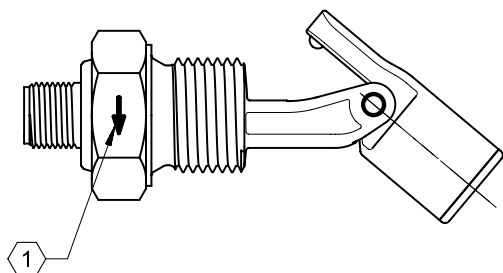
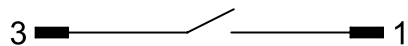


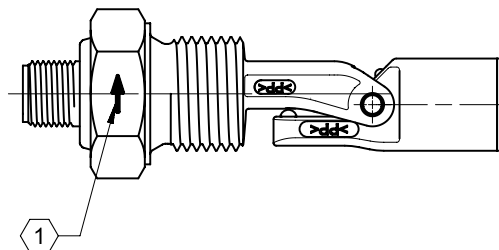
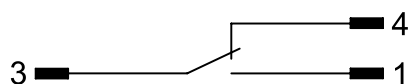
IMAGE 9/12



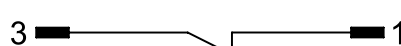
204KS0.E.....
204KS1.E.....



204KS2.E.....



204KS0.E.....
204KS1.E.....



204KS2.E.....

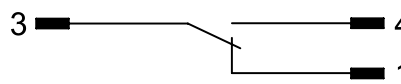
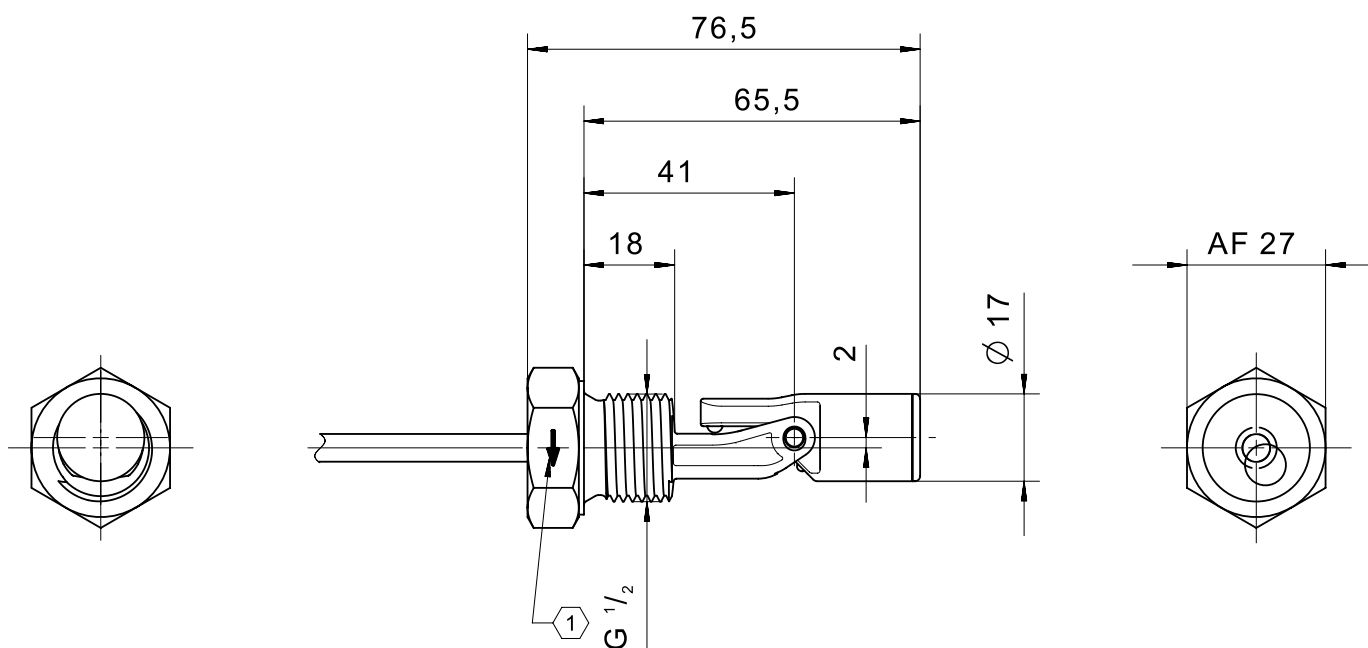
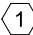
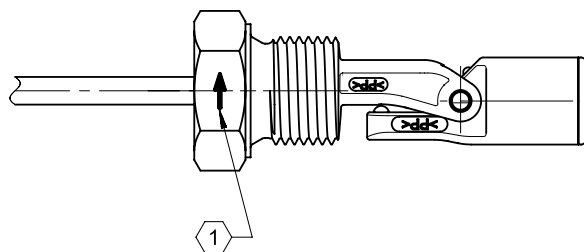


IMAGE 10/12

204KS..G.....



 marking for mounting position



Product options

IMAGE 1/1

ORDERING KEY

204KS							Float switch side mount, short, mechanical hinge	
							Contact form	
	1						N.O. / N.C. max. 250 V	
	2						C.O. max. 48V	
							Housing material	
		2					PP	
		4					PA12	
							Connections	
			C				Connection thread M16x2, M12 connector, compression grommet	
			D				Connection thread M16x2, cable connection 1m, compression grommet	
			E				Connection thread G1/2, M12 connector	
			G				Connection thread G1/2, cable connection 1m	
							Material of compression grommet	
				0			No seal*	* Only for connections E and G
				T			TPE (Santoprene)	
							Material of cable sheath	
					1H		PVC, cable length 1m*	* Only for connections D and G
					00		Only if selected with M12 connector*	* Only for connections C and E
							Other cable lengths*	* Only for connections D and G
						-3	Cable length 3m	
						-5	Cable length 5m	
						-10	Cable length 10m	

Optional

More materials for housings, compression grommets, cable sheathing on request

Características do artigo

Attribute	204KS12CT00	204KS12DT1H	204KS12E000	204KS12G01H	204KS14CT00	204KS14DT1H ▶
Max. switching voltage	250 V DC					
Max. switching voltage	250 V AC					
Max. switching current	1 A					
Max. switching power	50 W					
Contact form	1A or 1B					
Output signal	digital					
Technology	Reed					
Float diameter	17 mm					
Version	Mechanical hinge, small version					
Housing material	PP				PA12	
Float material	PP				PA12	
Cable material	-	PVC	-	PVC	-	PVC
Operating temperature min.	-25 °C					
Max. operating temperature	105 °C					
Pressure resistance	3 bar					
Protection class outside container	IP67 DIN EN 60529					
Protection class inside container	IP68 DIN EN 60529					
Mounting type	Compression grommet		Thread		Compression grommet	
Thread	-		G 1/2		-	
Installation opening	D22-23		G1/2		D22-23	
Connector type	M12	-	M12	-	M12	-
Cable length	-	1 m	-	1 m	-	1 m

Características do artigo

Attribute	204KS14E000	204KS14G01H	204KS22CT00	204KS22DT1H	204KS22E000	204KS22G01H ▶
Max. switching voltage	250 V DC		48 V DC			
Max. switching voltage	250 V AC		48 V AC			
Max. switching current	1 A		0.5 A			
Max. switching power	50 W		10 W			
Contact form	1A or 1B		1C			
Output signal	digital					
Technology	Reed					
Float diameter	17 mm					
Version	Mechanical hinge, small version					
Housing material	PA12		PP			
Float material	PA12		PP			
Cable material	-	PVC	-	PVC	-	PVC
Operating temperature min.	-25 °C					
Max. operating temperature	105 °C					
Pressure resistance	3 bar					
Protection class outside container	IP67 DIN EN 60529					
Protection class inside container	IP68 DIN EN 60529					
Mounting type	Thread		Compression grommet		Thread	
Thread	G 1/2		-		G 1/2	
Installation opening	G1/2		D22-23		G1/2	
Connector type	M12	-	M12	-	M12	-
Cable length	-	1 m	-	1 m	-	1 m

Características do artigo

Attribute	204KS24CT00	204KS24DT1H	204KS24E000	204KS24G01H
Max. switching voltage	48 V DC			
Max. switching voltage	48 V AC			
Max. switching current	0.5 A			
Max. switching power	10 W			
Contact form	1C			
Output signal	digital			
Technology	Reed			
Float diameter	17 mm			
Version	Mechanical hinge, small version			
Housing material	PA12			
Float material	PA12			
Cable material	-	PVC	-	PVC
Operating temperature min.	-25 °C			
Max. operating temperature	105 °C			
Pressure resistance	3 bar			
Protection class outside container	IP67 DIN EN 60529			
Protection class inside container	IP68 DIN EN 60529			
Mounting type	Compression grommet		Thread	
Thread	-		G 1/2	
Installation opening	D22-23		G1/2	
Connector type	M12	-	M12	-
Cable length	-	1 m	-	1 m