



Sensor de nível 2..2 / 2..3

Este sensor de nível com sinal de saída analógico está disponível até 2500 mm e cabeçote giratório de 360 ° que oferece flexibilidade durante sua montagem e operação.

O sensor de nível modelo 2..2 / 2..3 oferece opcionalmente um display em LCD ou controle remoto para parametrização do sensor

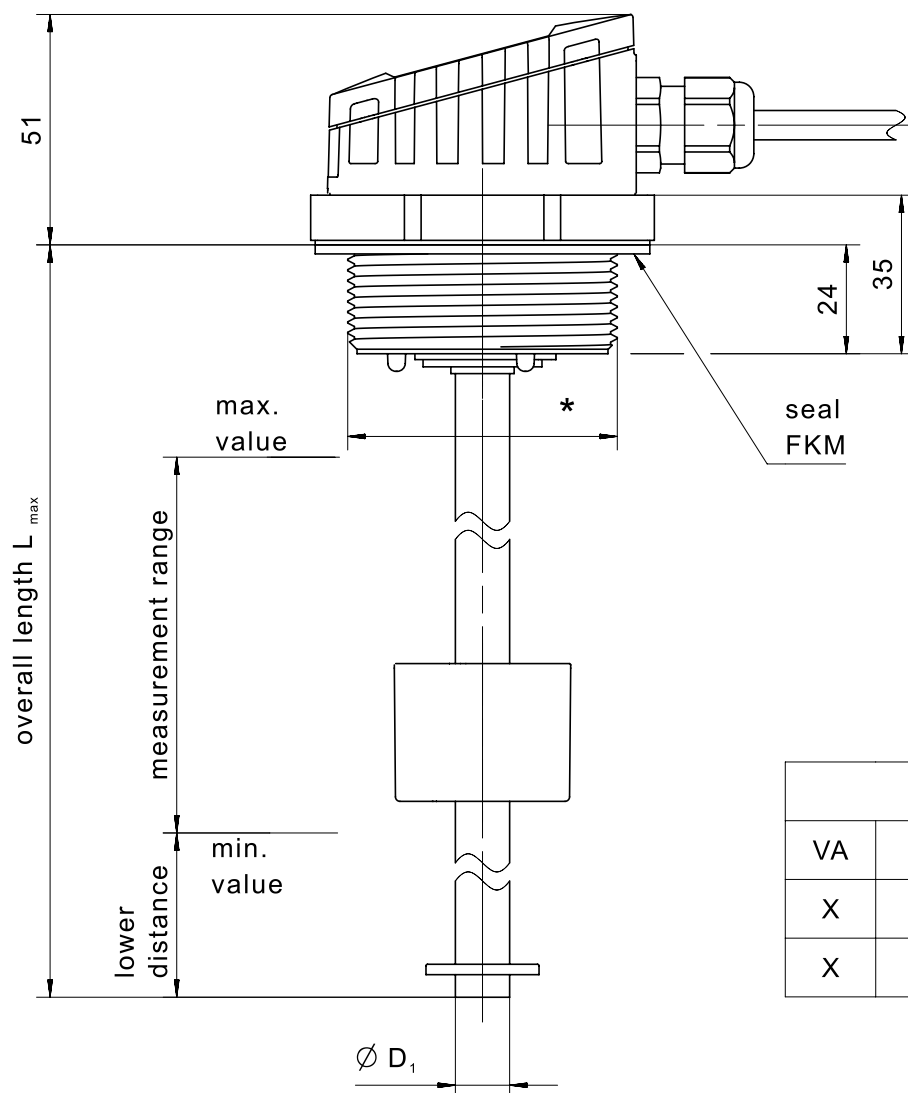
O cliente ainda pode optar por diferentes materiais, comprimento de medição e resolução do sensor, podendo desta forma ser usado em uma infinidade de aplicações industriais e móbil.

Especificação Técnica

- Tecnologia de sensores magnético (reed switch)
- Roscas: G 1.5 , G 2 1.5 NPT ou 2 NPT
- Range de medição até 2500 mm
- Materiais: PVC, PP, PA 12, aço inox ou PVDF
- Sinal de saída em tensão ou corrente
- Até 4 sinais de saída digital programáveis
- Resolução de medição 10-35 mm (padrão 10 mm / 20 mm)
- Temperatura de trabalho -40 °C até +85 °C
- Sensor de temperatura opcional

Desenho técnico

IMAGE 1/6



tube			head *
VA	$D_1 \varnothing$	L_{max}	
X	12	1500	G2 or G1 $\frac{1}{2}$
X	16	2500	G2 or G1 $\frac{1}{2}$

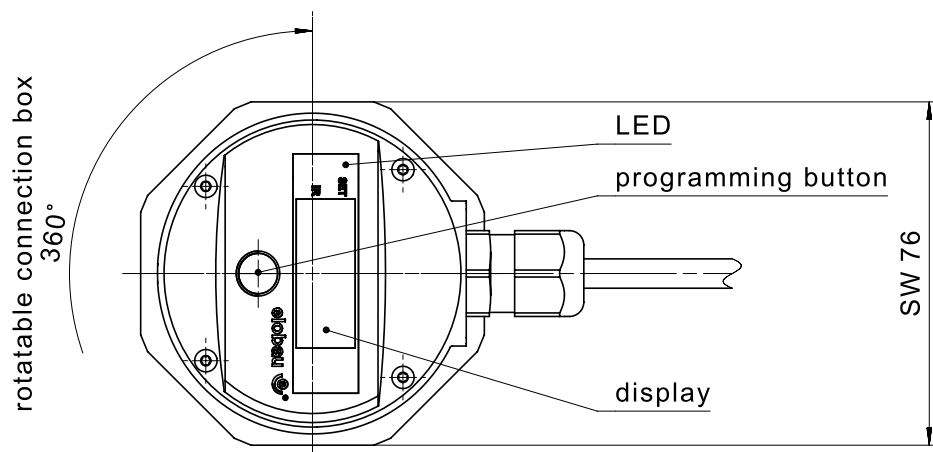


IMAGE 2/6

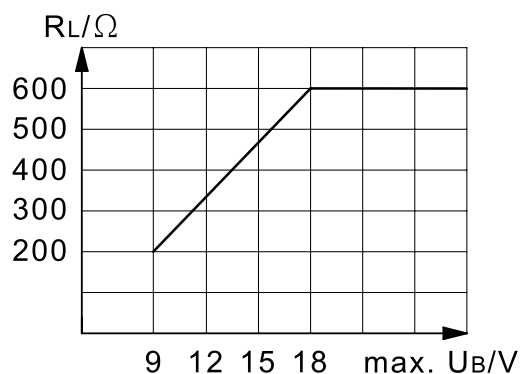
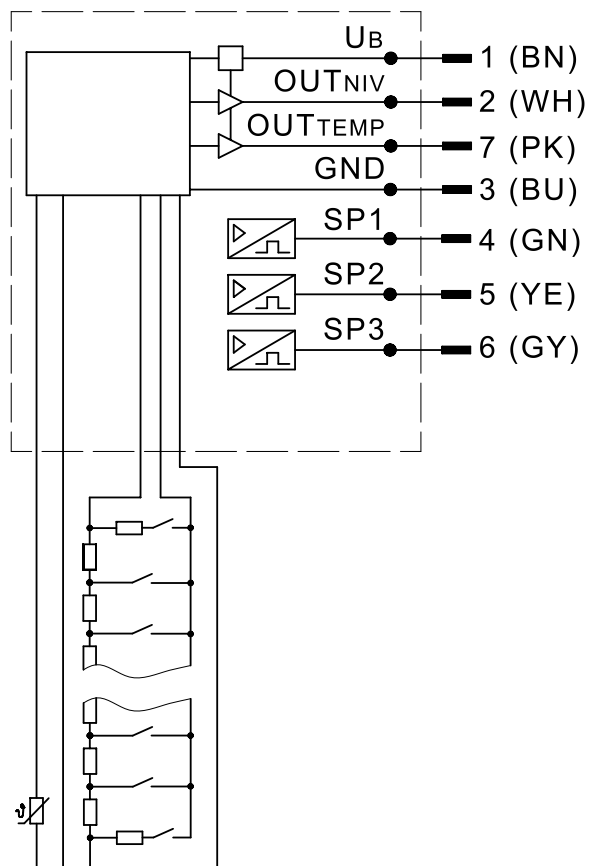


IMAGE 3/6

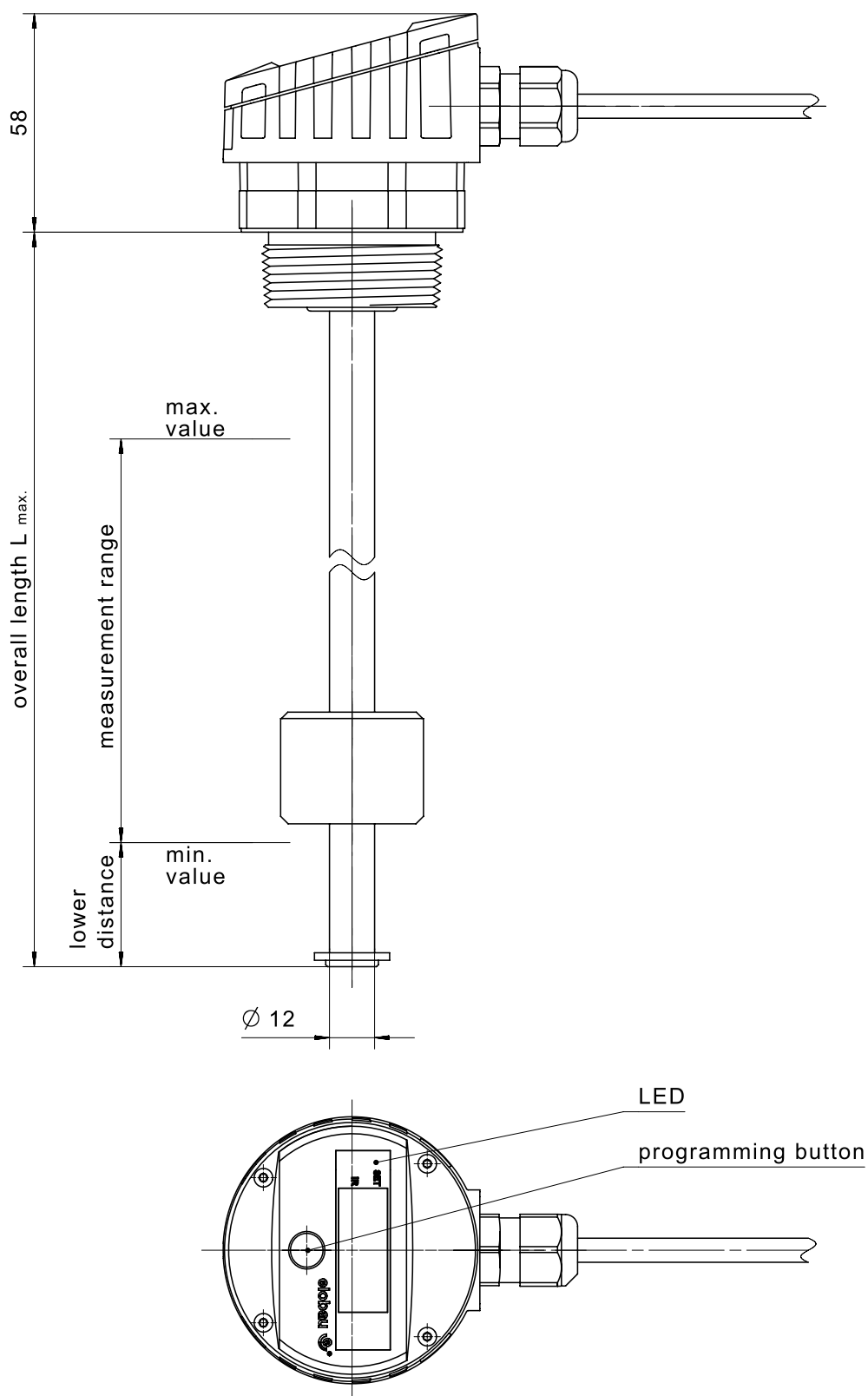
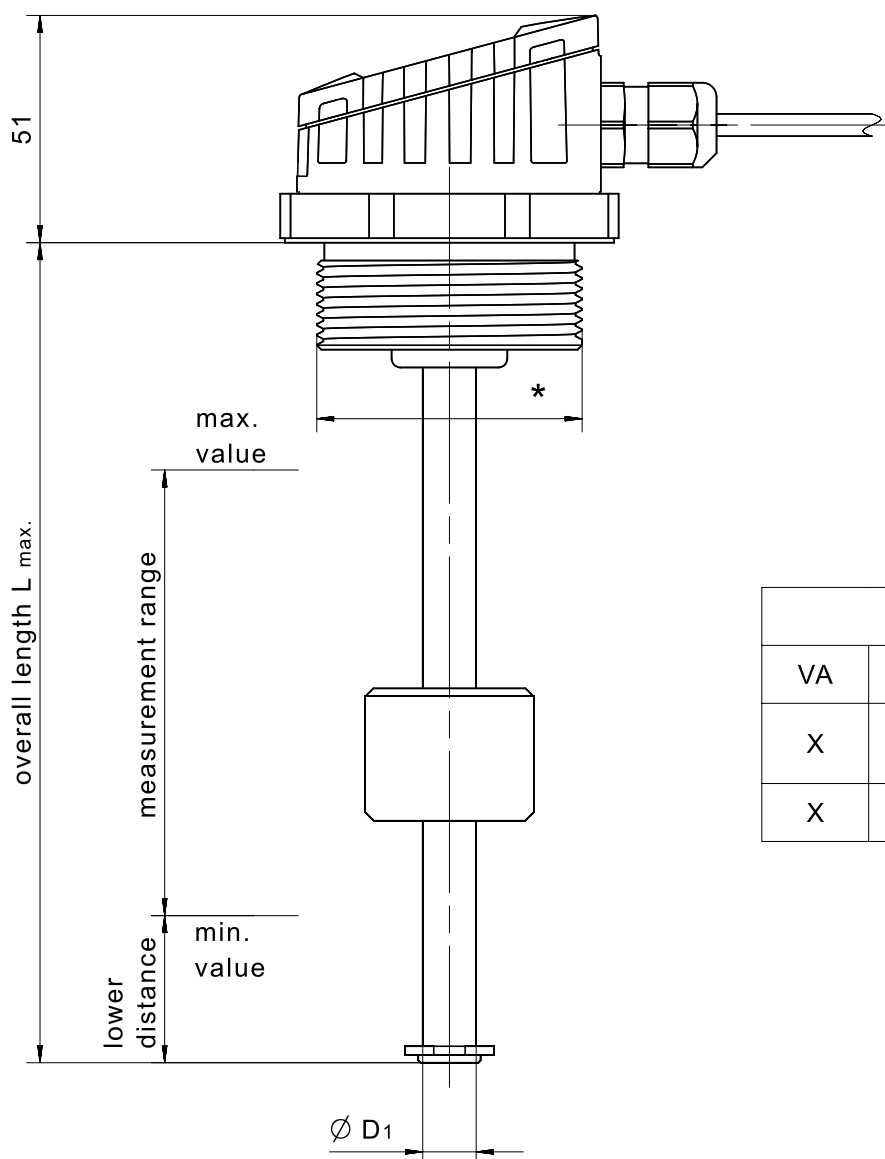


IMAGE 4/6



tube			head *
VA	$\varnothing D_1$	L max	
X	12	1500	G2 or G1 $\frac{1}{2}$ NPT2 or NPT1 $\frac{1}{2}$
X	16	2500	G2 or NPT2

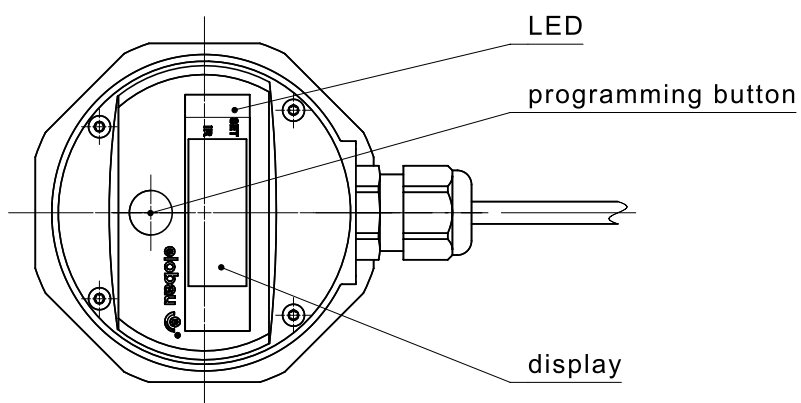
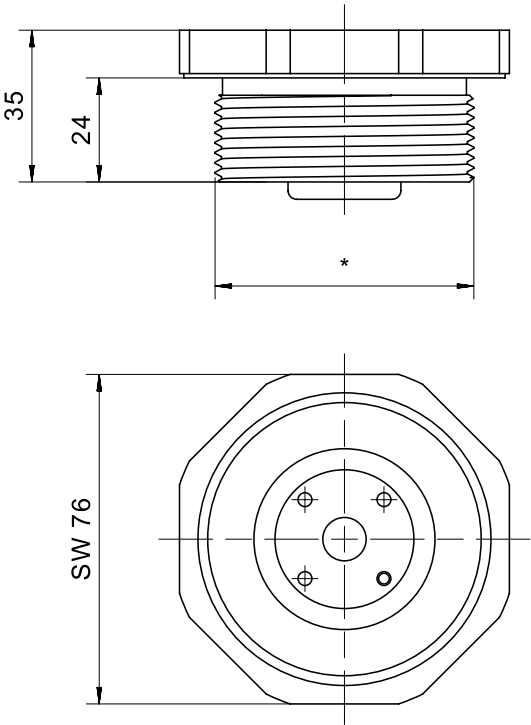
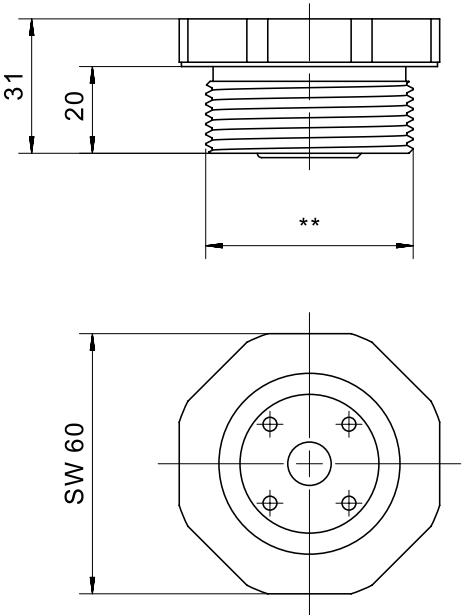


IMAGE 5/6



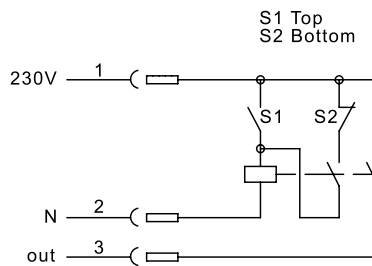
for Ø 16 tube	for Ø 12 tube	head thread *		material		
		G2	NPT2	PVC	PVDF	PP
	x		x	x	x	x
	x	x		x	x	
x		x	x	x		



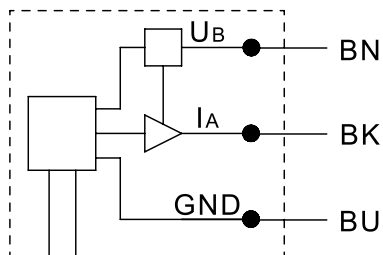
for Ø 12 tube	head thread **		material		
	G1 1/2	NPT1 1/2	PVC	PVDF	PP
x	x		x	x	
x		x	x	x	x

IMAGE 6/6

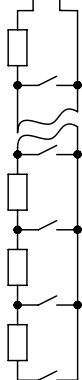
222313-001



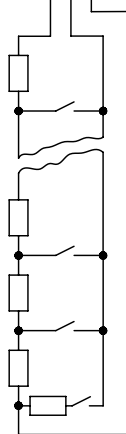
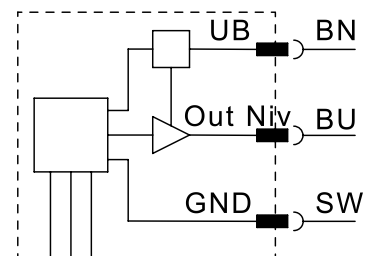
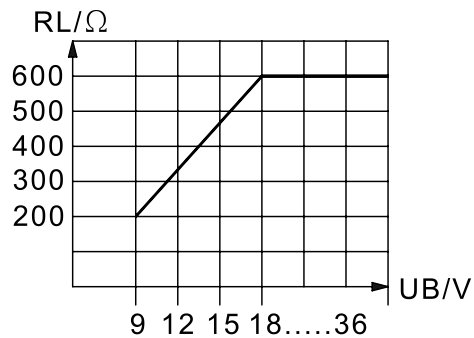
205322-003



225312-001



maximale Last am Stromausgang
maximum load on current output



Product options

IMAGE 1/1

ORDERING KEY

Article number	Spacing	Thread	Riser length	Measuring length	Lower blind zone
212232-001/B	10	G 2	400	320	33
212232-002/B	20	G 2	600	500	43
212232-003/B	20	G 2	800	700	43
212232-004/B	20	G 2	1000	900	43
212232-005/B	20	G 2	1200	1100	43
215232-001/B	10	G 1 1/2	400	320	33
215232-002/B	20	G 1 1/2	600	500	43
215232-003/B	20	G 1 1/2	800	700	43
215232-004/B	20	G 1 1/2	1000	900	43
215232-005/B	20	G 1 1/2	1200	1100	43

Technical properties: riser material stainless steel 1.4571, housing material PA12, float material PA12, FKM seal, display, 3 configurable switching points, temperature contact, 3m pigtail outlet with 8-pin M12 connector, rotatable head, output signal 4...20mA

Características do artigo

Attribute	212232....	215232....
Min. switching voltage	9 V DC	
Max. switching voltage	32 V DC	
Max. switching current	0.5 A	
Polarity reversal protection	yes	
Switching output	low-side (open drain)	
Output signal min.	4 mA	
Output signal max.	20 mA	
EMC immunity (Norm)	DIN EN IEC 61000-6-2	
EMC emission (Norm)	DIN EN 55011	
Operating voltage min.	9 V DC	
Operating voltage max.	32 V DC	
Current consumption	68 mA	
Linearity error	2 %	
Technology	Reed	
Outputs	analog + digital	
Number of switching outputs	3	
Temperature output	yes	
Lower blind zone	siehe Bestellschlüssel	
Spacing	siehe Bestellschlüssel	
Application area	Industry	
Rotatable head	yes	
Recommended minimum density of the medium	0.65 g/cm ³	
Float diameter	39 mm	
Housing material	PA12	
Float material	PA12	
Riser material	VA 1.4571	
Cable material	PVC	
Sealing material	FKM (Viton)	
Protection class, mechanical	IP67 DIN EN 60529	
Operating temperature min.	-20 °C	
Max. operating temperature	70 °C	
Min. storage temperature	-30 °C	

Attribute	212232....	215232....
Max. storage temperature	80 °C	
Vibration resistance (Norm)	DIN EN 60068-2-6 DIN EN 60068-2-64	
Pressure resistance	3 bar	
ESD insulation resistance (Norm)	DIN EN 61000-4-2	
Mounting type	Thread	
Thread	G 2	G 1 1/2
Riser diameter	12 mm	
Installation opening	G 2	G 1 1/2
Torque	40 N m	
Connector type	M12	
Cable length	3 m	