



Sensor de nível 2..2 / 2..3

Este sensor de nível com sinal de saída analógico está disponível até 2500 mm e cabeçote giratório de 360 ° que oferece flexibilidade durante sua montagem e operação.

O sensor de nível modelo 2..2 / 2..3 oferece opcionalmente um display em LCD ou controle remoto para parametrização do sensor

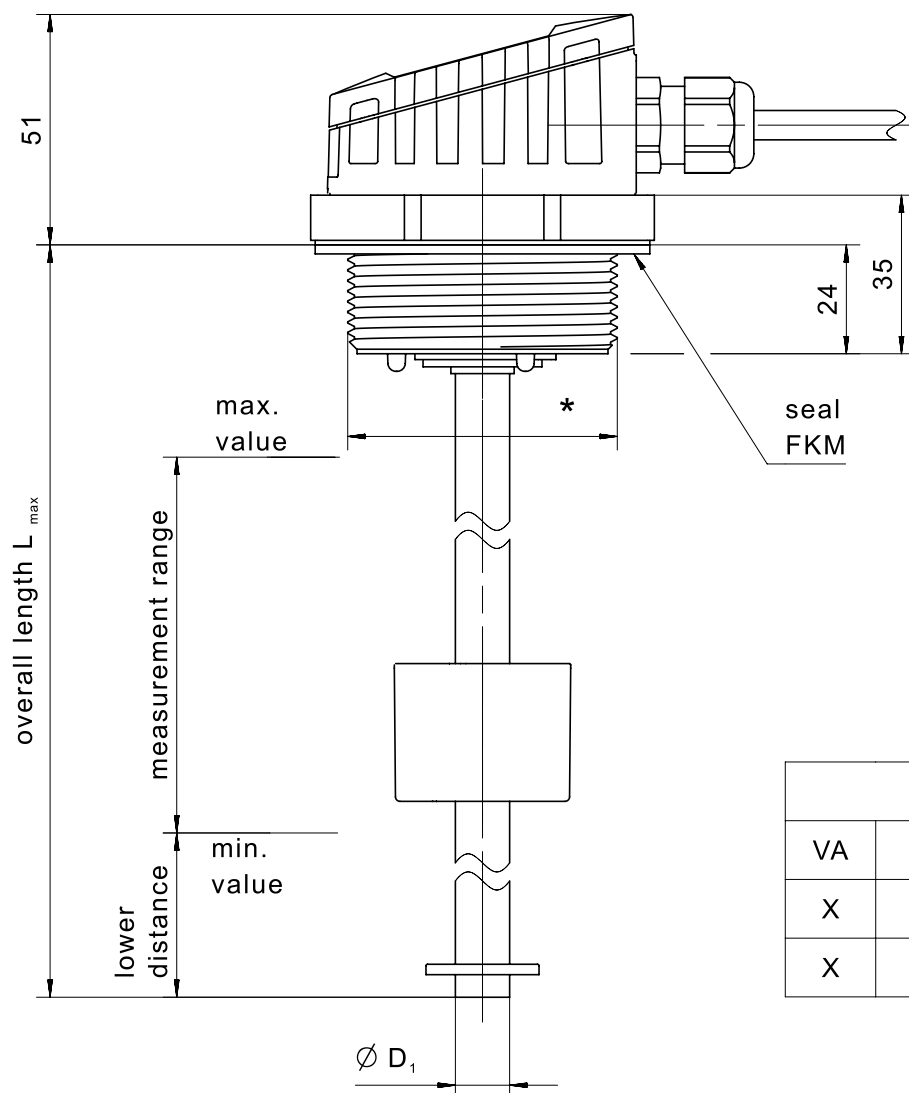
O cliente ainda pode optar por diferentes materiais, comprimento de medição e resolução do sensor, podendo desta forma ser usado em uma infinidade de aplicações industriais e móbil.

Especificação Técnica

- Tecnologia de sensores magnético (reed switch)
- Roscas: G 1.5 , G 2 1.5 NPT ou 2 NPT
- Range de medição até 2500 mm
- Materiais: PVC, PP, PA 12, aço inox ou PVDF
- Sinal de saída em tensão ou corrente
- Até 4 sinais de saída digital programáveis
- Resolução de medição 10-35 mm (padrão 10 mm / 20 mm)
- Temperatura de trabalho -40 °C até +85 °C
- Sensor de temperatura opcional

Desenho técnico

IMAGE 1/6



tube			head *
VA	$D_1 \varnothing$	L_{\max}	
X	12	1500	G2 or G1 $\frac{1}{2}$
X	16	2500	G2 or G1 $\frac{1}{2}$

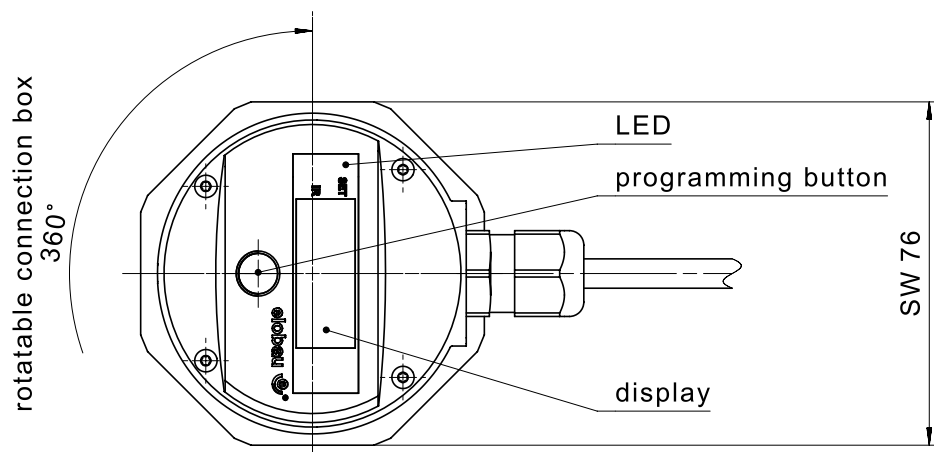


IMAGE 2/6

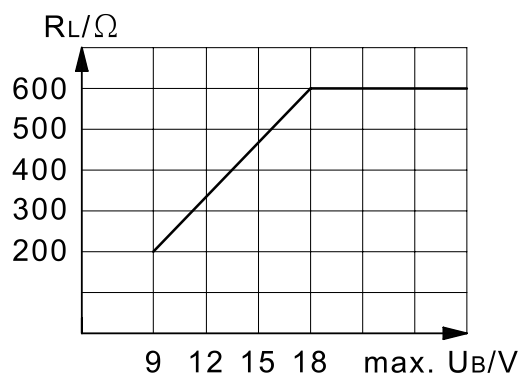
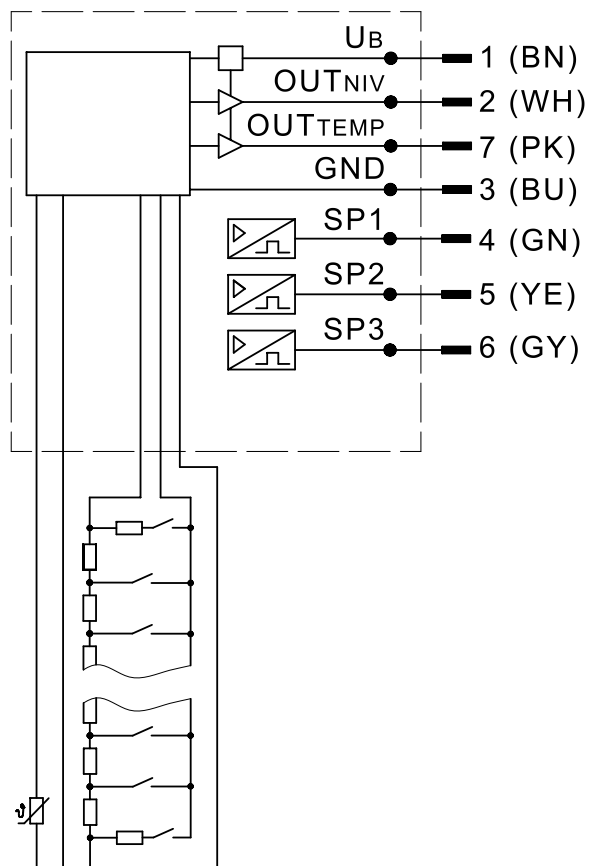


IMAGE 3/6

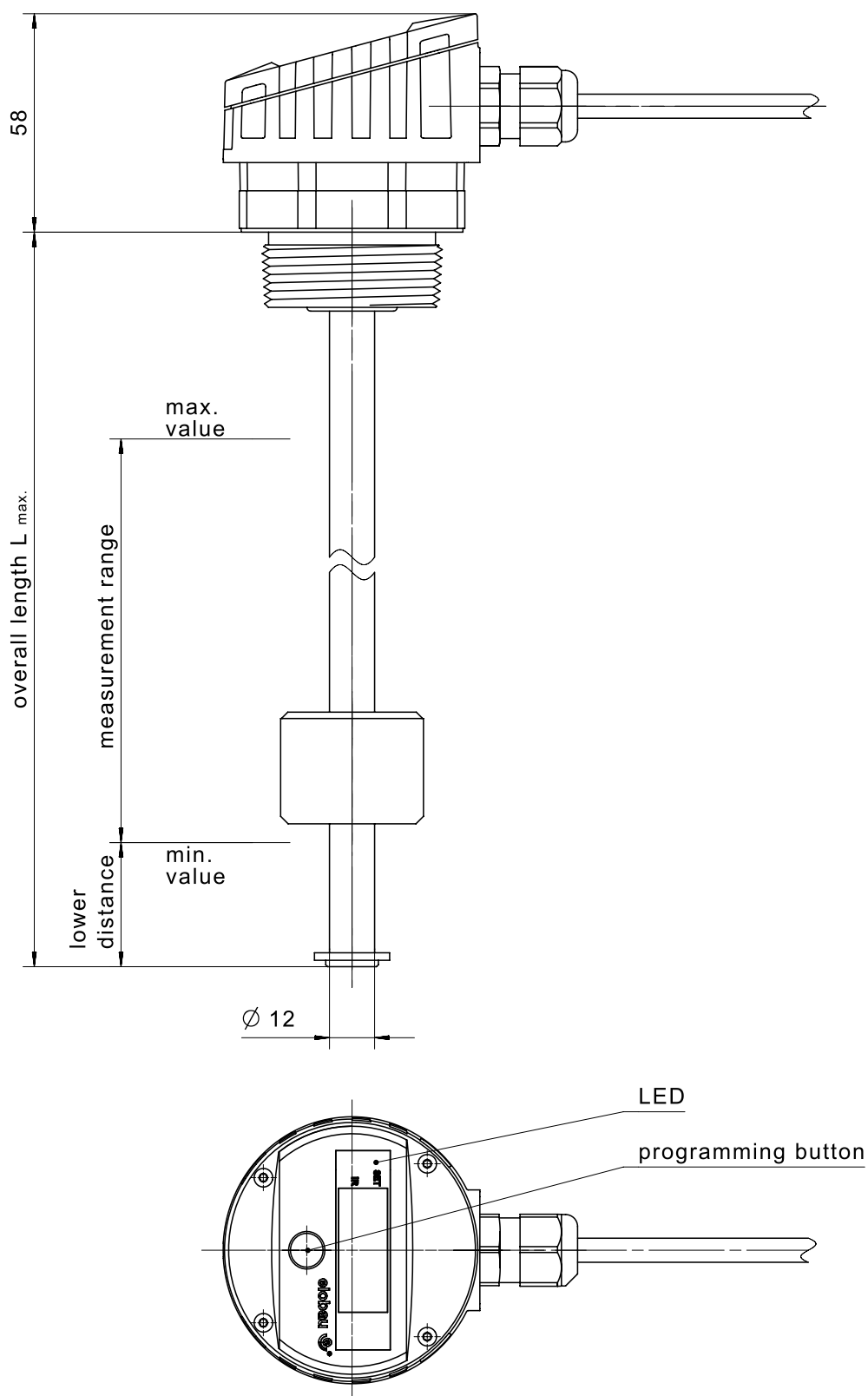
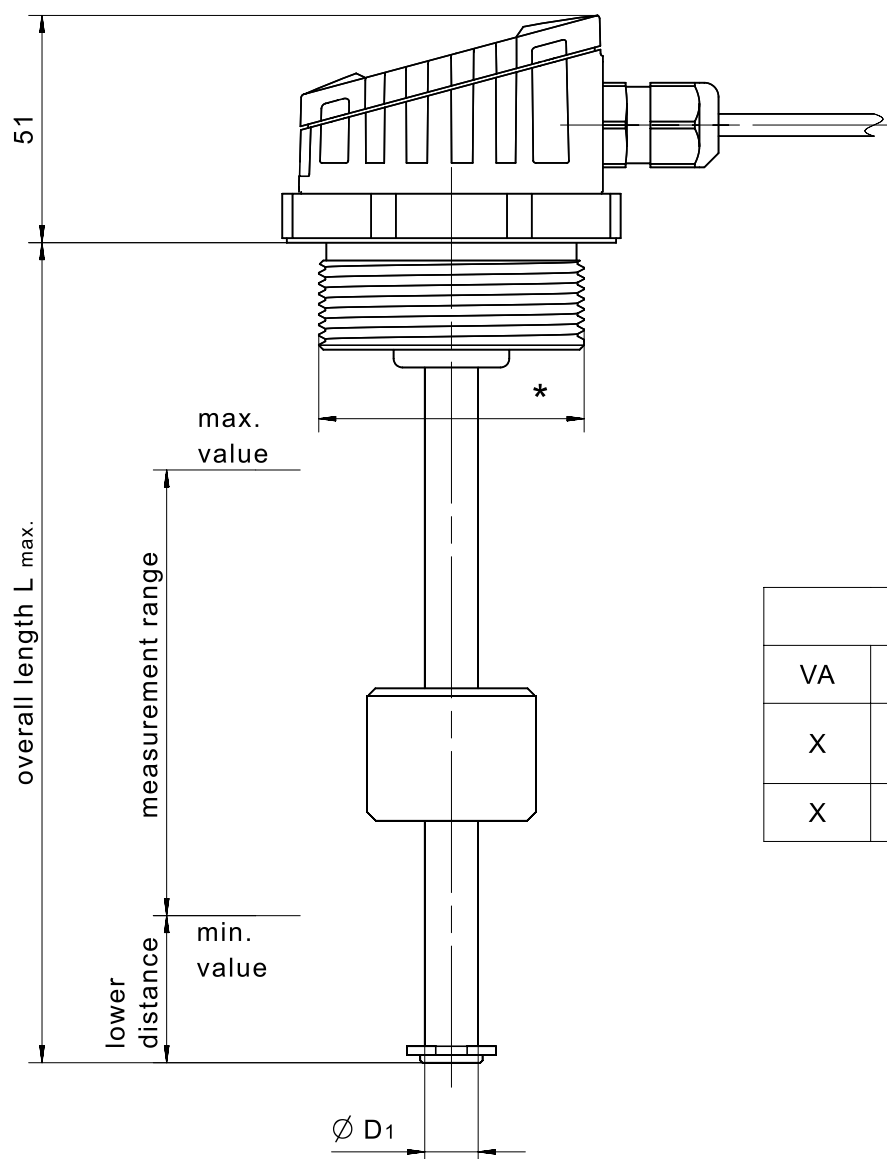


IMAGE 4/6



tube			head *
VA	$\varnothing D_1$	L max	
X	12	1500	G2 or G1 $\frac{1}{2}$ NPT2 or NPT1 $\frac{1}{2}$
X	16	2500	G2 or NPT2

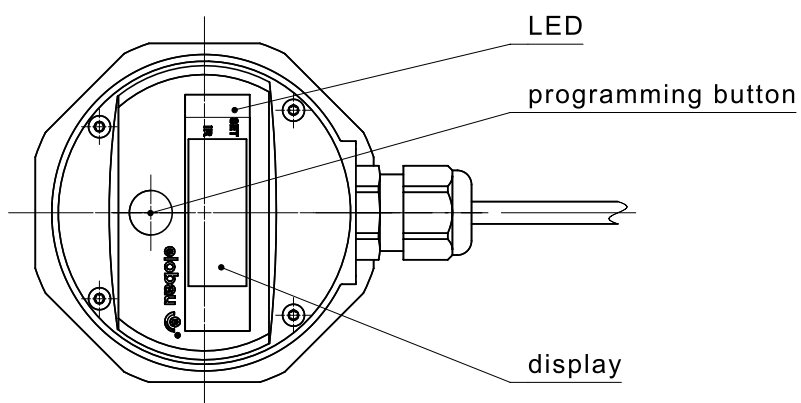
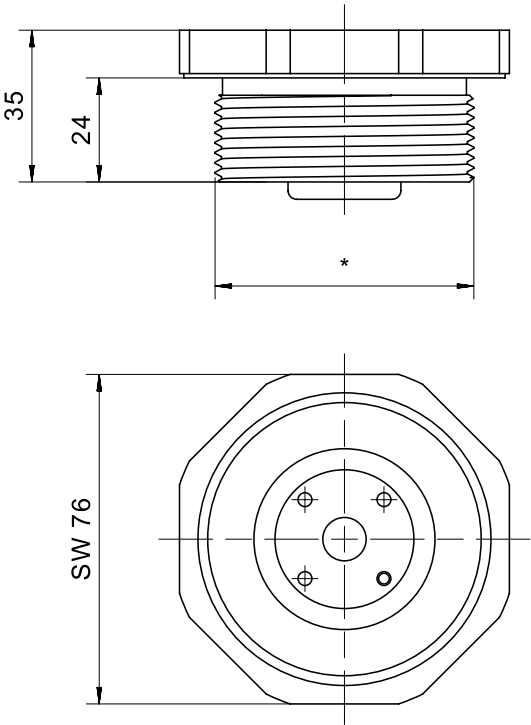
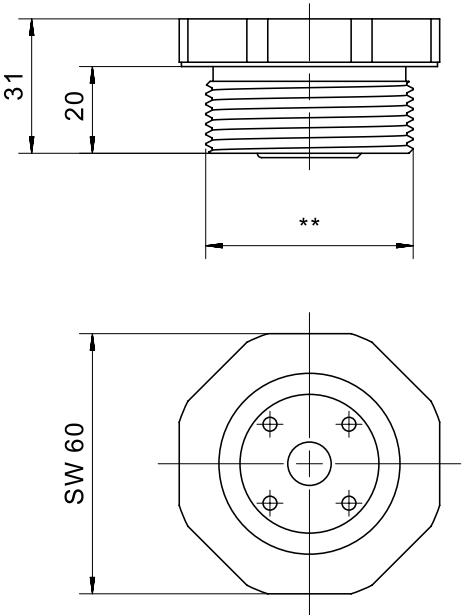


IMAGE 5/6



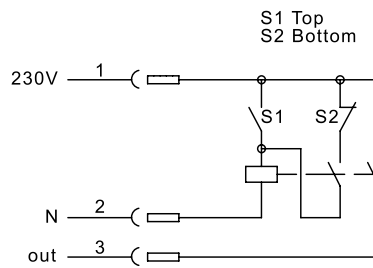
for Ø 16 tube	for Ø 12 tube	head thread *		material		
		G2	NPT2	PVC	PVDF	PP
	x		x	x	x	x
	x	x		x	x	
x		x	x	x		



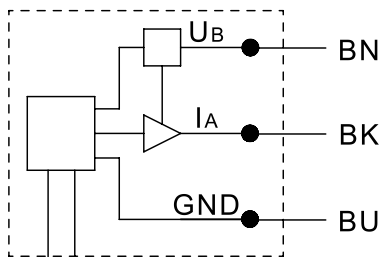
for Ø 12 tube	head thread **		material		
	G1 1/2	NPT1 1/2	PVC	PVDF	PP
x	x		x	x	
x		x	x	x	x

IMAGE 6/6

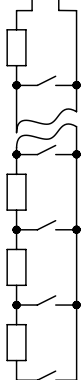
222313-001



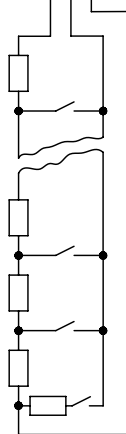
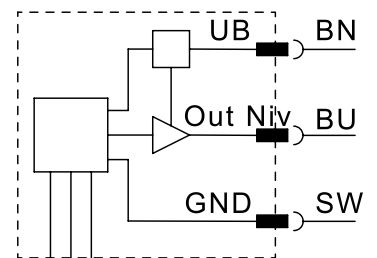
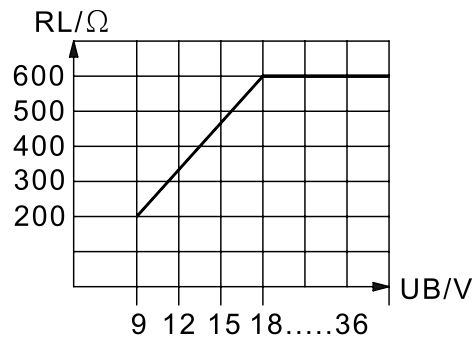
205322-003



225312-001



maximale Last am Stromausgang
maximum load on current output



Product options

IMAGE 1/1

ORDERING KEY

Article number	Spacing	Thread	Riser length	Measuring length	Lower blind zone
212232-001/B	10	G 2	400	320	33
212232-002/B	20	G 2	600	500	43
212232-003/B	20	G 2	800	700	43
212232-004/B	20	G 2	1000	900	43
212232-005/B	20	G 2	1200	1100	43
215232-001/B	10	G 1 1/2	400	320	33
215232-002/B	20	G 1 1/2	600	500	43
215232-003/B	20	G 1 1/2	800	700	43
215232-004/B	20	G 1 1/2	1000	900	43
215232-005/B	20	G 1 1/2	1200	1100	43

Technical properties: riser material stainless steel 1.4571, housing material PA12, float material PA12, FKM seal, display, 3 configurable switching points, temperature contact, 3m pigtail outlet with 8-pin M12 connector, rotatable head, output signal 4...20mA

Características do artigo

Attribute	212232....	215232....	ED212232....	ED215232....
Min. switching voltage	9 V DC			-
Max. switching voltage	32 V DC			-
Max. switching current	0.5 A			-
Polarity reversal protection	yes			-
Switching output	low-side (open drain)			-
Output signal min.	4 mA			-
Output signal max.	20 mA			-
EMC immunity (Norm)	DIN EN IEC 61000-6-2			-
EMC emission (Norm)	DIN EN 55011			-
Operating voltage min.	9 V DC			-
Operating voltage max.	32 V DC			-
Current consumption	68 mA			-
Linearity error	2 %			-
Technology	Reed			-
Outputs	analog + digital			-
Number of switching outputs	3			-
Temperature output	yes			-
Lower blind zone	siehe Bestellschlüssel			-
Spacing	siehe Bestellschlüssel			-
Application area	Industry			-
Rotatable head	yes			-
Recommended minimum density of the medium	0.65 g/cm³			-
Float diameter	39 mm			-
Housing material	PA12			-
Float material	PA12			-
Riser material	VA 1.4571			-
Cable material	PVC			-
Sealing material	FKM (Viton)			-
Protection class, mechanical	IP67 DIN EN 60529			-
Operating temperature min.	-20 °C			-
Max. operating temperature	70 °C			-
Min. storage temperature	-30 °C			-

Attribute	212232....	215232....	ED212232....	ED215232....
Max. storage temperature	80 °C		-	
Vibration resistance (Norm)	DIN EN 60068-2-6 DIN EN 60068-2-64		-	
Pressure resistance	3 bar		-	
ESD insulation resistance (Norm)	DIN EN 61000-4-2		-	
Mounting type	Thread		-	
Thread	G 2	G 1 1/2	-	
Riser diameter	12 mm		-	
Installation opening	G 2	G 1 1/2	-	
Torque	40 N m		-	
Connector type	M12		-	
Cable length	3 m		-	