



Conector T 350AT..K

O conector tipo T é usado para simplificar a montagem em série de sensores de segurança RFID modelo eloProtect E.

Especificação Técnica

- Simplifica a montagem em série de sensores de segurança RFID modelo eloProtect E
- Padrão M12

Desenho técnico

IMAGE 1/9

350ATC6K

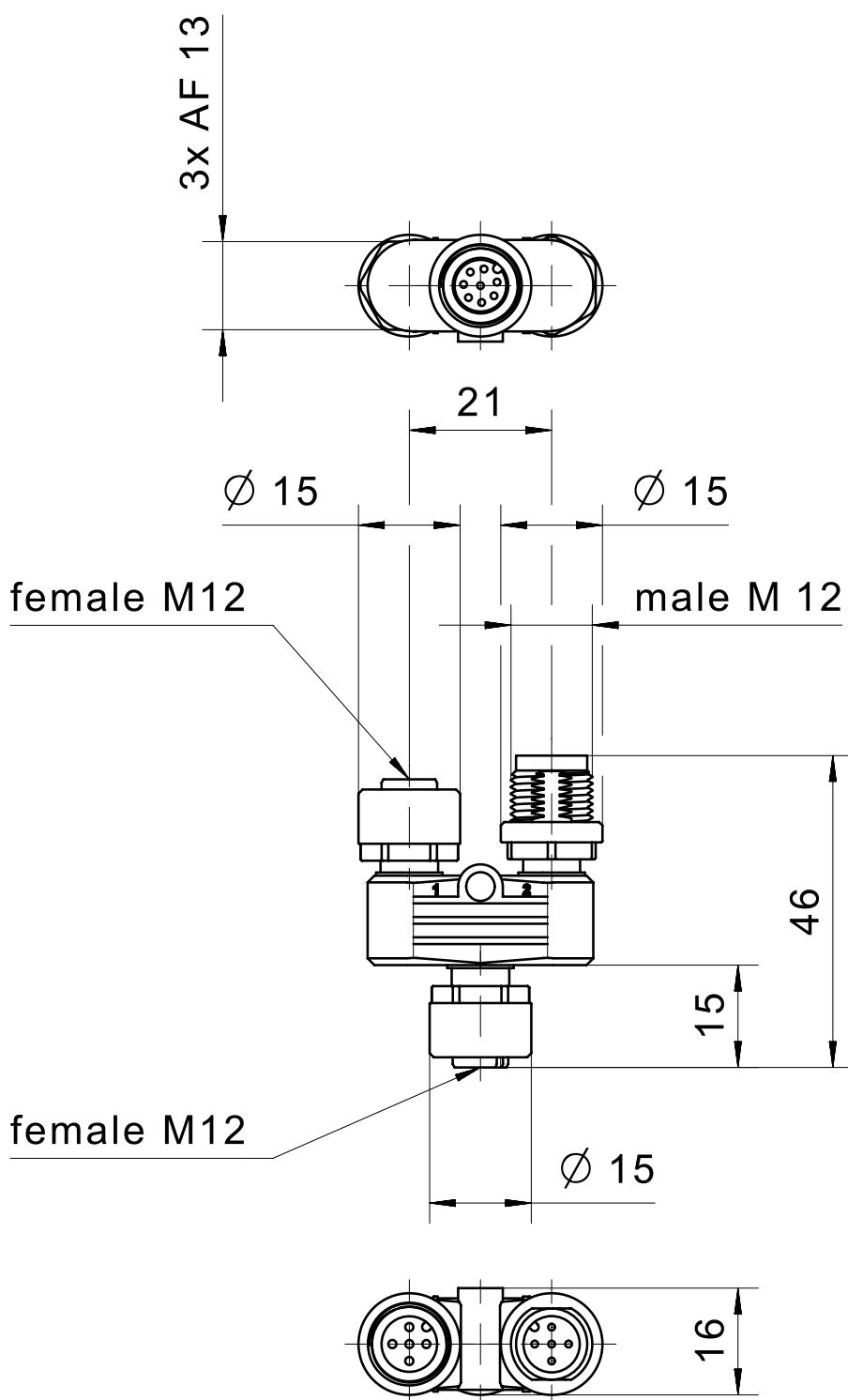
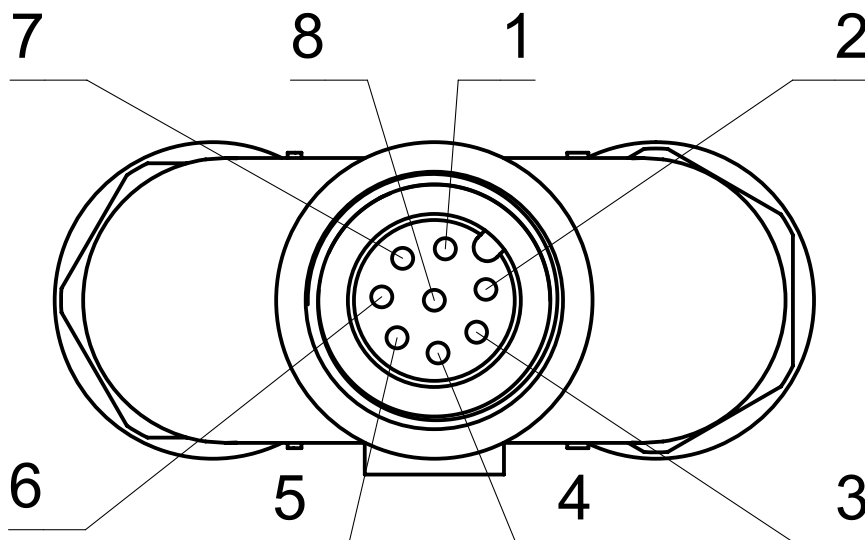


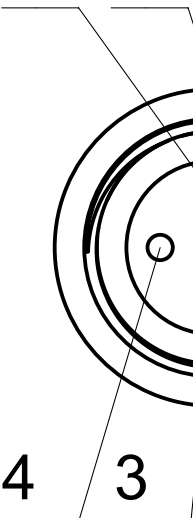
IMAGE 2/9

female M12



female M12

1 2



male M12

2 1

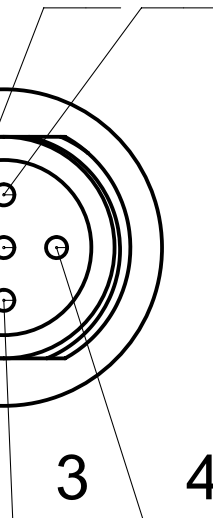


IMAGE 3/9

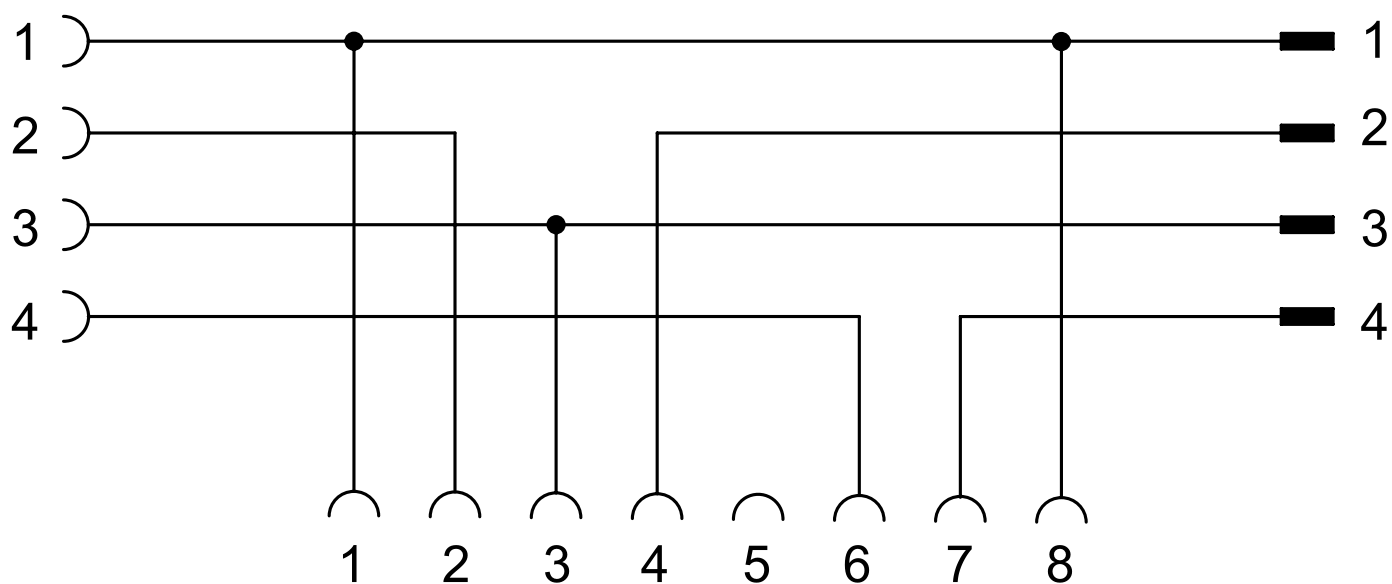


IMAGE 4/9

350ATD7K

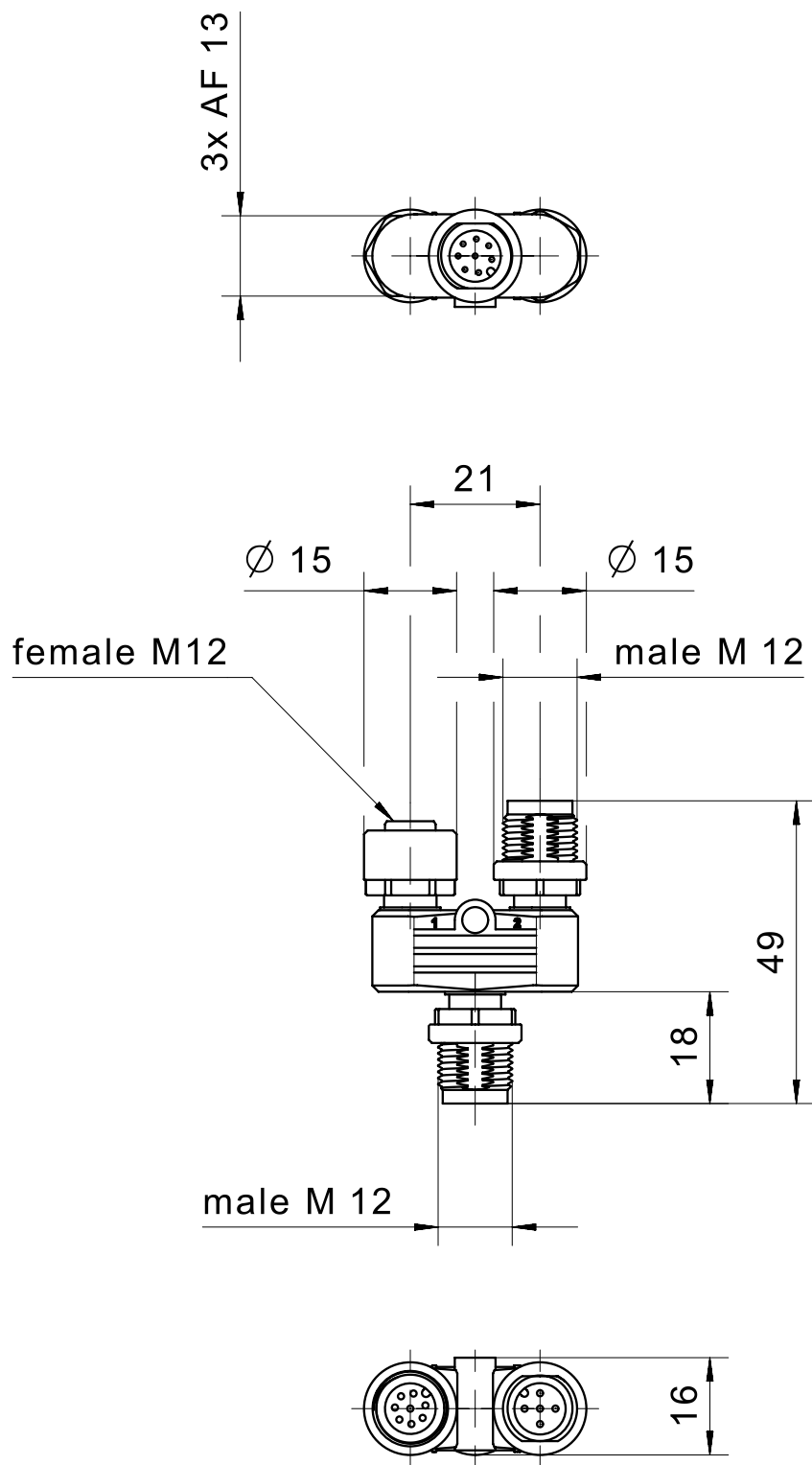
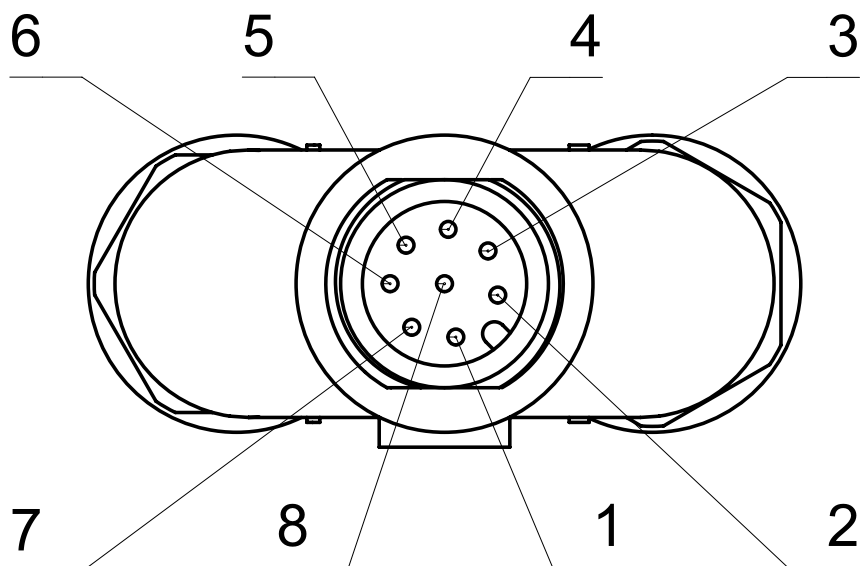


IMAGE 5/9

male M12



female M12

male M12

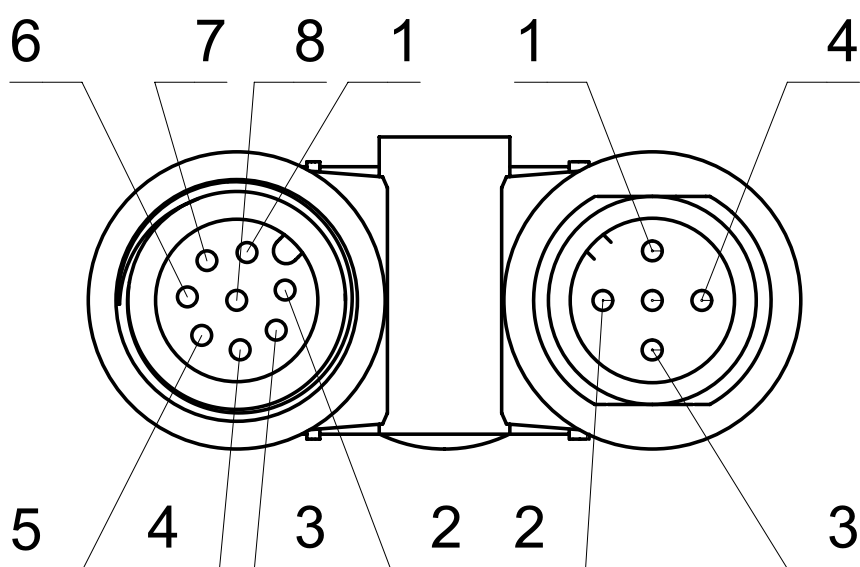


IMAGE 6/9

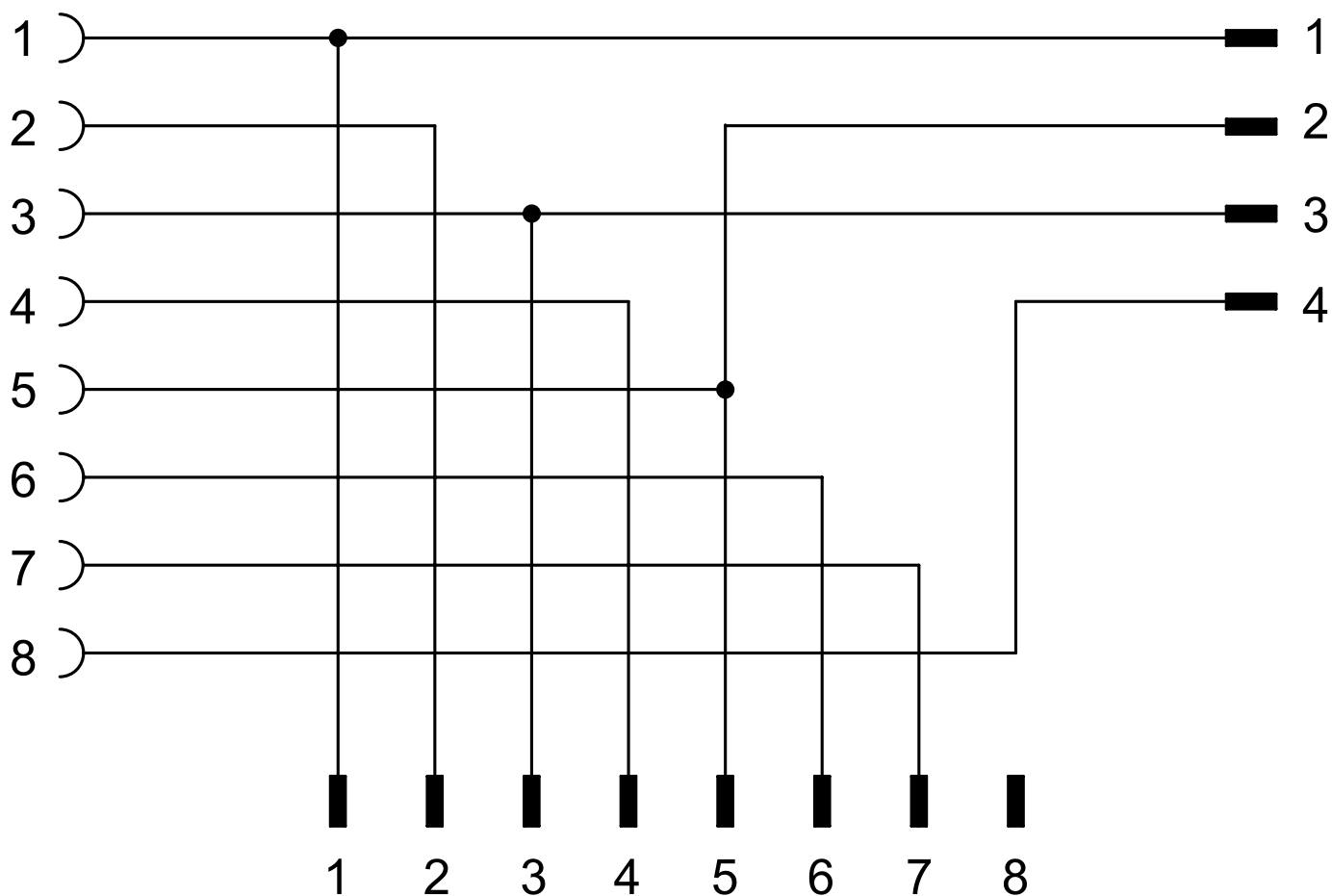


IMAGE 7/9

350ATD8K

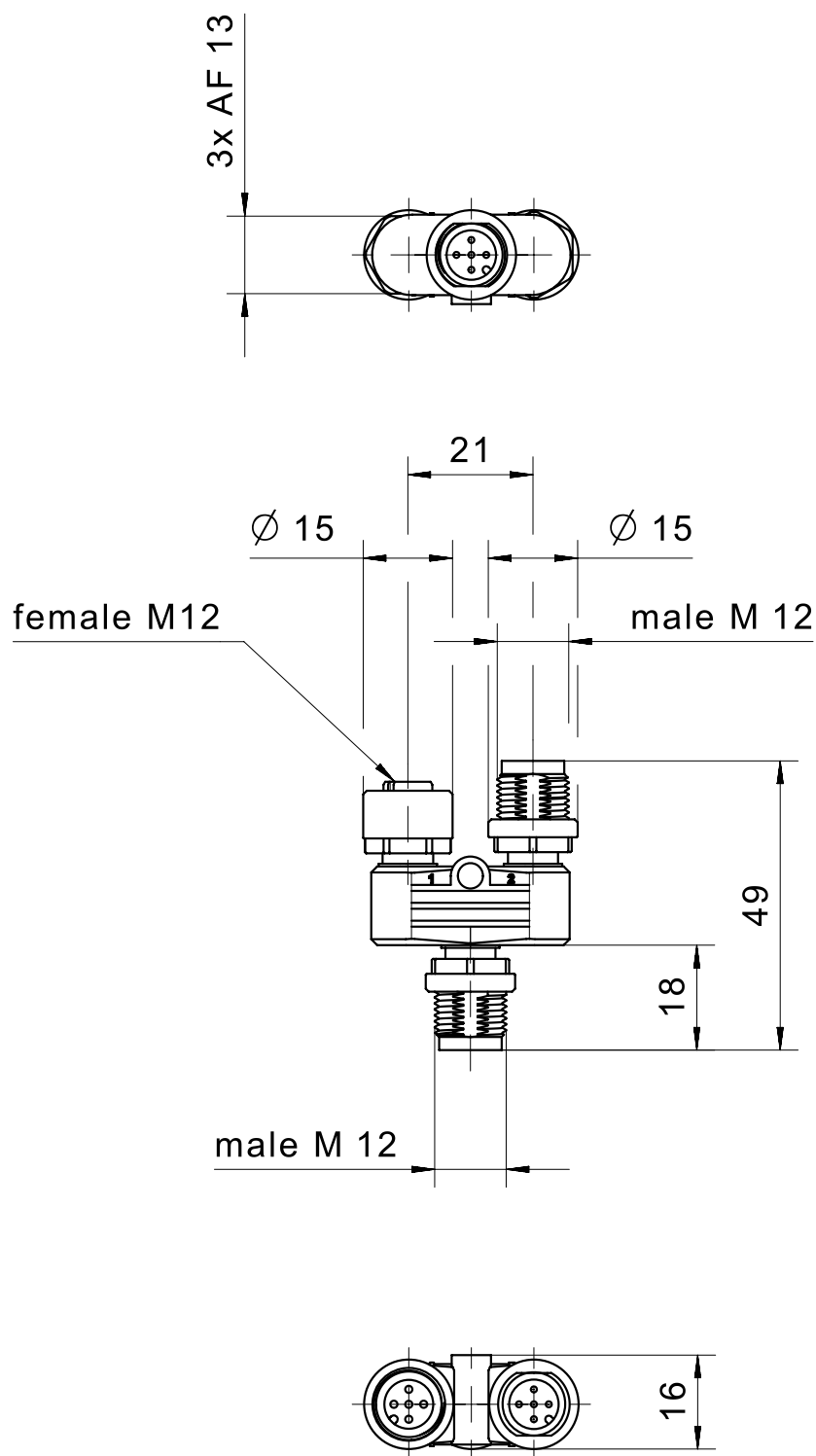
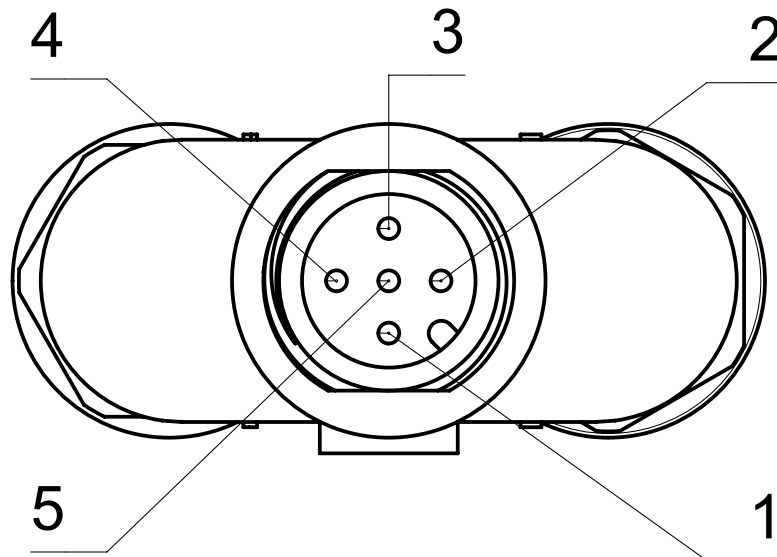


IMAGE 8/9

male M12



female M12 male M12

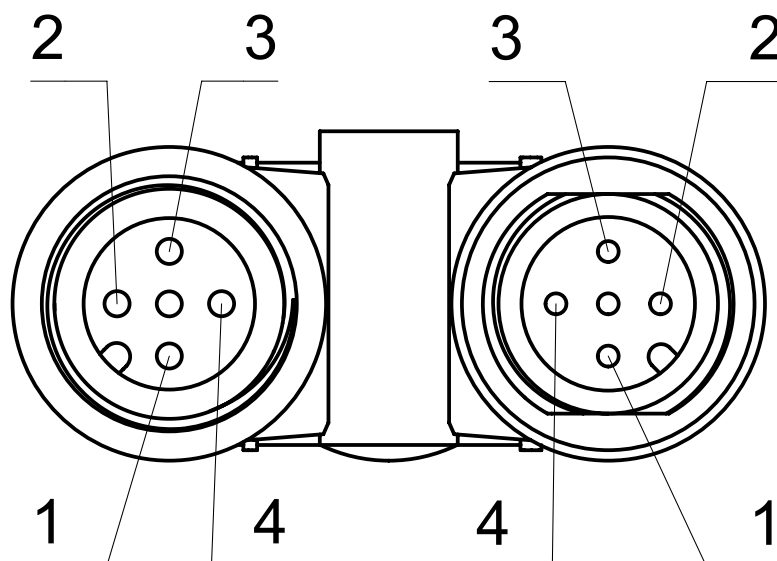


IMAGE 9/9



Características do artigo

| Attribute | 350ATC6K | 350ATD7K | 350ATD8K |
|--|-----------------------|----------|----------|
| Max. switching current per contact | 2 A | | 4 A |
| Rated impulse withstand voltage (Uimp) | 800 V | | |
| Pollution degree | 3 | | |
| Operating voltage max. | 30 V DC | | 60 V DC |
| Operating voltage max. | 30 V AC | | 60 V AC |
| Nut material | PA | | |
| Overmould material | PA | | |
| Protection class, connector | IP67 DIN EN 60529 | | |
| Operating temperature min. | -25 °C | | |
| Max. operating temperature | 85 °C | | |
| Min. storage temperature | -25 °C | | |
| Max. storage temperature | 85 °C | | |
| Torque for nuts | 0,6 N m | | |
| Weight | 16 g | 17 g | 15 g |
| Connector type | M12 Stecker gerade | | |
| Connection type | geschraubt / gesteckt | | |
| Number of pins | 8/4/4 | 8/8/4 | 4/4/4 |
| Certified in accordance with | UL1977/CSA22.2 ECOLAB | | |