



## Conector 35115

### Especificação Técnica

- Conectores e soquetes M12, 4 pinos
- Comprimentos de cabo flexíveis

### Desenho técnico

IMAGE 1/9

351150

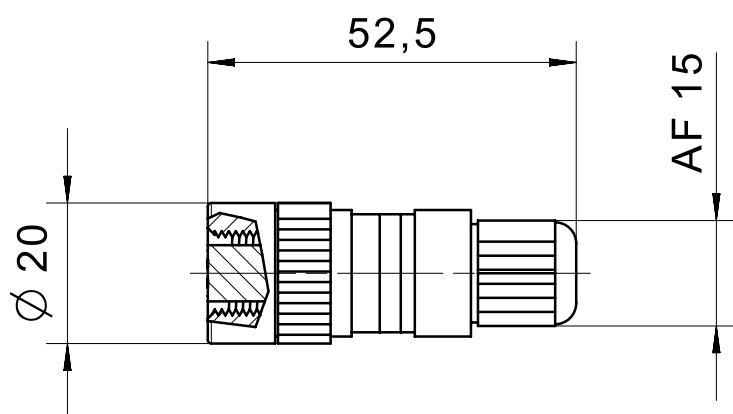
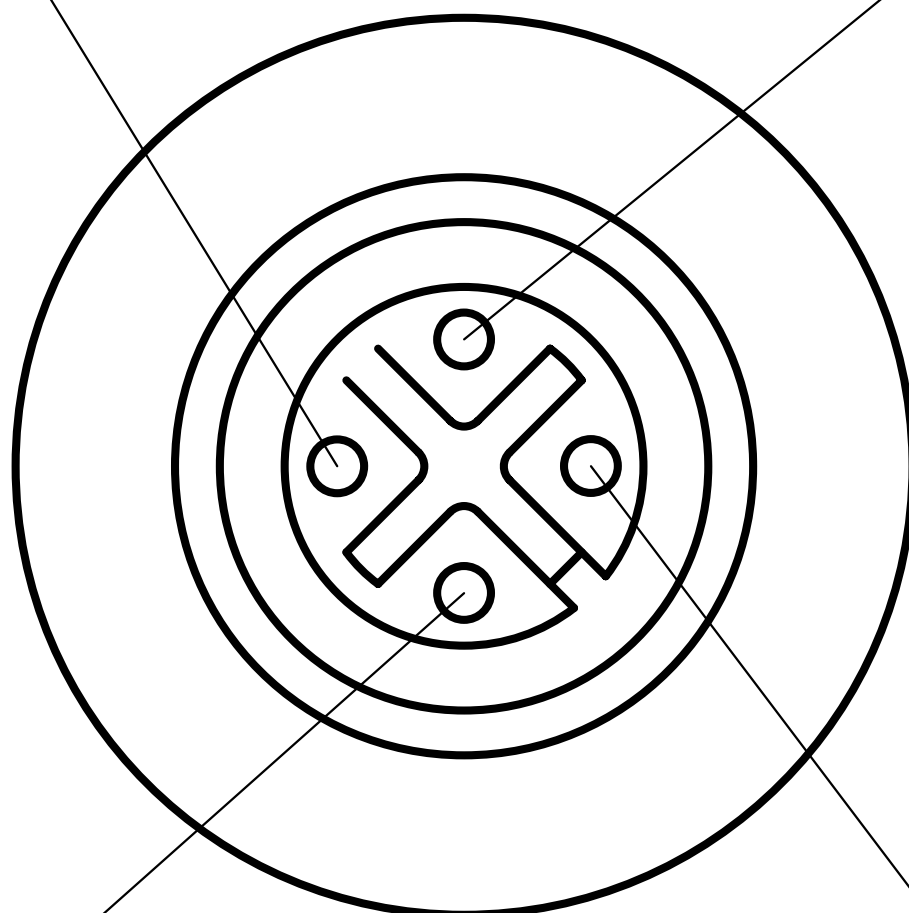


IMAGE 2/9

# female M12

3

4



2

1

IMAGE 3/9

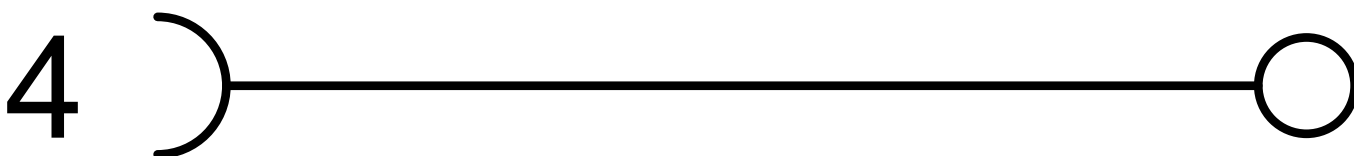
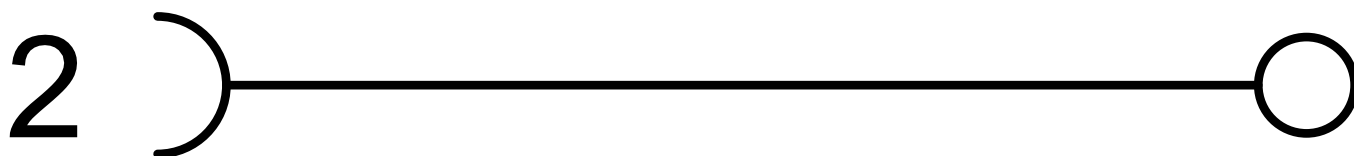
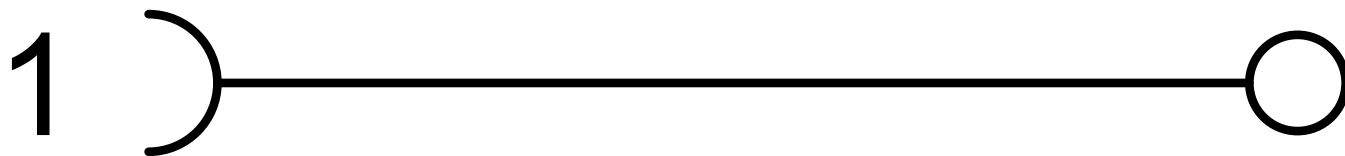


IMAGE 4/9

351151



IMAGE 5/9



|   |             |          |               |
|---|-------------|----------|---------------|
| <br>Status | Maßstab     |          | Benennung     |
|   | Revision    | E        | Kupplungsdose |
|   | Gepr. Datum | 29.03.19 | Nummer        |
|   | Geprüft     | pr1mi    | Cat_351151    |

IMAGE 6/9



IMAGE 7/9

351152

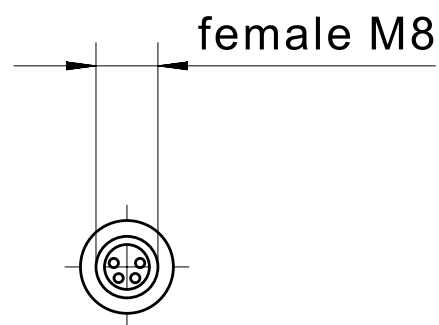
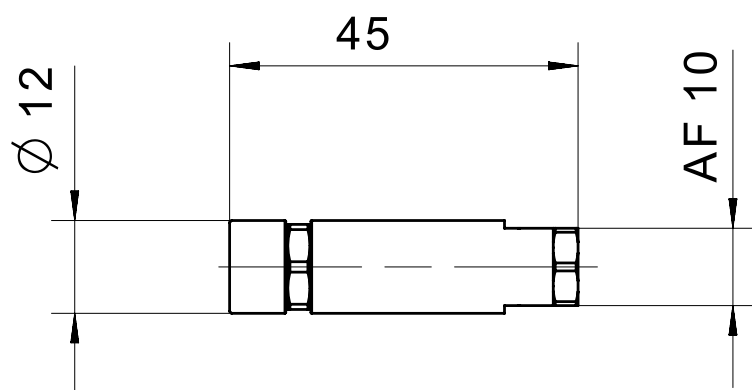


IMAGE 8/9

# female M8

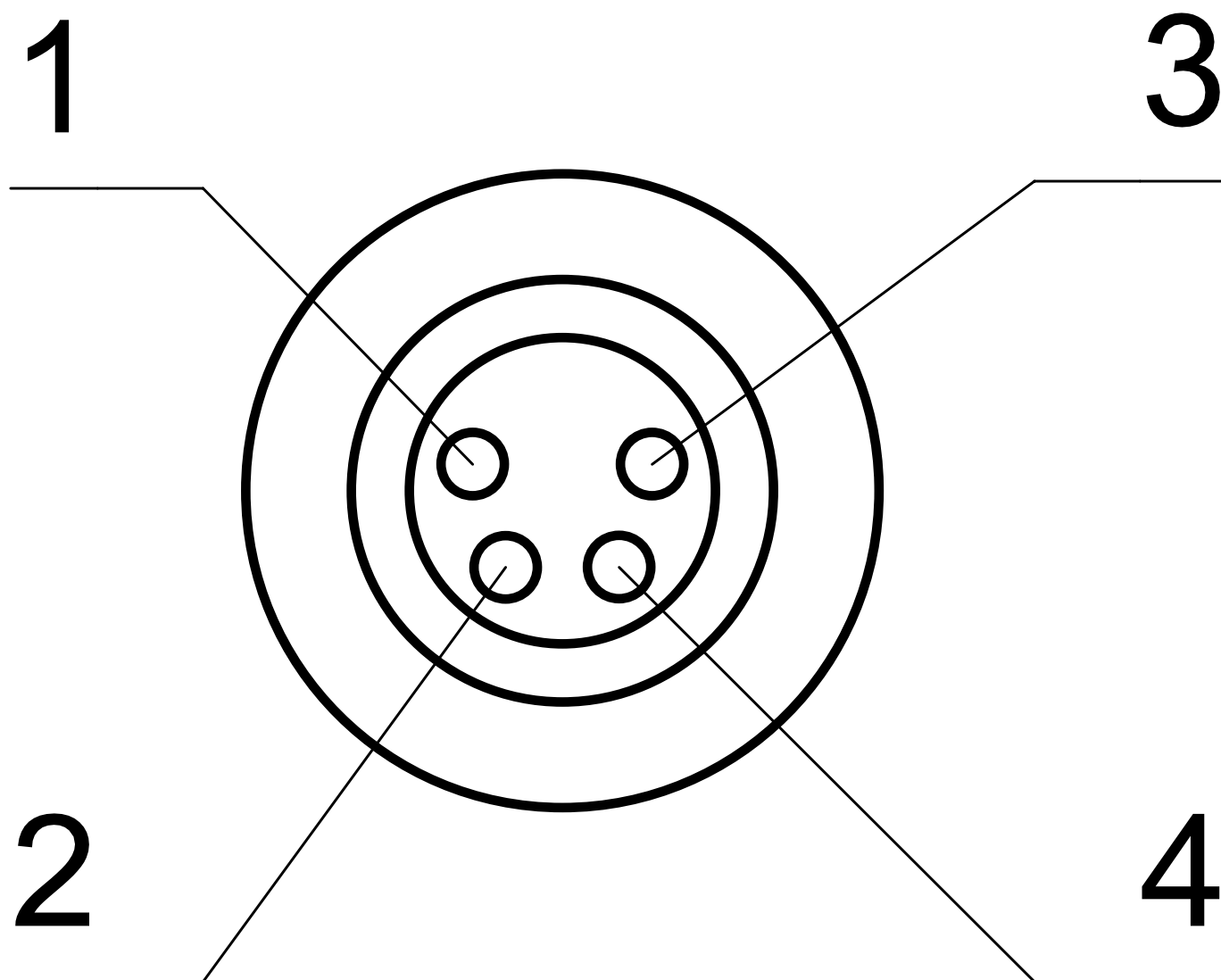
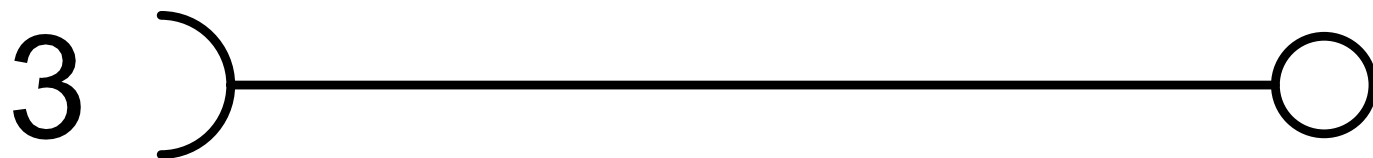
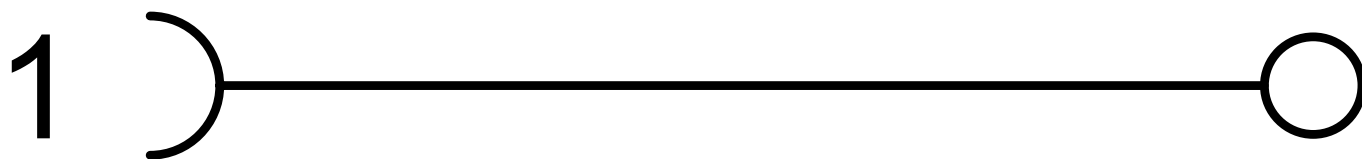




IMAGE 9/9



## Product options

IMAGE 1/1

### ORDERING KEY

| 351 |     | Field-attachable connector |
|-----|-----|----------------------------|
|     | 150 | M12 socket                 |
|     | 151 | M12 connector              |
|     | 152 | M8 socket                  |
|     | 153 | M8 connector               |

## Características do artigo

| Attribute                              | 351150               | 351151                  | 351152              | 351153                 |
|--|----------------------|-------------------------|---------------------|------------------------|
| Max. switching current per contact     | 4 A                  |                         |                     |                        |
| Rated impulse withstand voltage (Uimp) | 2500 V               |                         | 800 V               |                        |
| Pollution degree                       | 3                    |                         |                     |                        |
| Operating voltage max.                 | 240 V DC             |                         |                     |                        |
| Operating voltage max.                 | 240 V AC             |                         |                     |                        |
| Nut material                           | CuZi nickel-plated   |                         |                     |                        |
| Overmould material                     | PA                   |                         |                     |                        |
| Operating temperature min.             | -40 °C               |                         |                     |                        |
| Max. operating temperature             | 85 °C                |                         |                     |                        |
| Min. storage temperature               | -40 °C               |                         |                     |                        |
| Max. storage temperature               | 85 °C                |                         |                     |                        |
| Torque for nuts                        | 0,5 N m              |                         |                     |                        |
| Weight                                 | 23 g                 |                         | 10 g                |                        |
| Connector type                         | M12 socket, straight | M12 connector, straight | M8 socket, straight | M8 connector, straight |
| Connection type                        | Screw connection     |                         |                     |                        |
| Cable diameter                         | 3 - 6,5 mm           |                         | 3,5 - 5,5 mm        |                        |
| Number of pins                         | 4                    |                         |                     |                        |
| Min. connection cross section          | 0.14 mm²             |                         |                     |                        |
| Max. connection cross section          | 0.75 mm²             |                         | 0.5 mm²             |                        |
| Certified in accordance with           | UL 2238/CSA22.2      |                         | -                   |                        |