



Conector 35115

Especificação Técnica

- Conectores e soquetes M12, 4 pinos
- Comprimentos de cabo flexíveis

Desenho técnico

IMAGE 1/9

351150

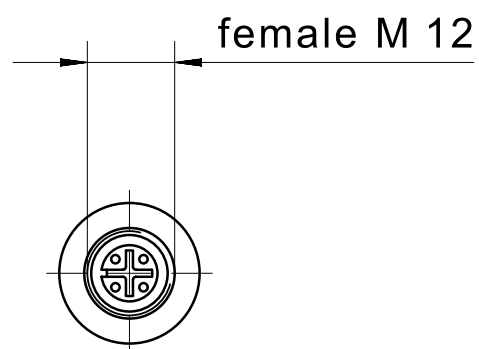
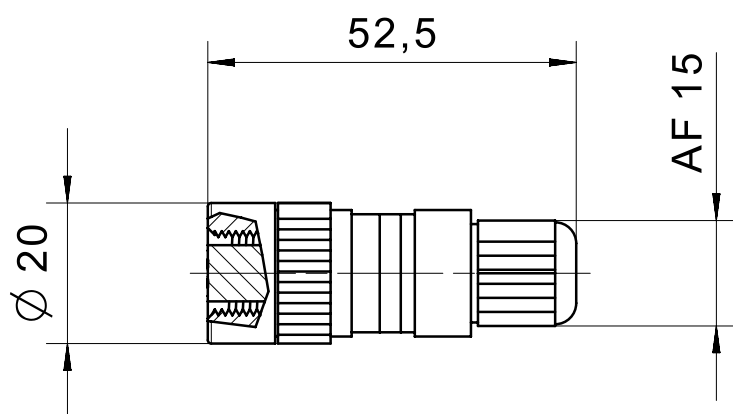
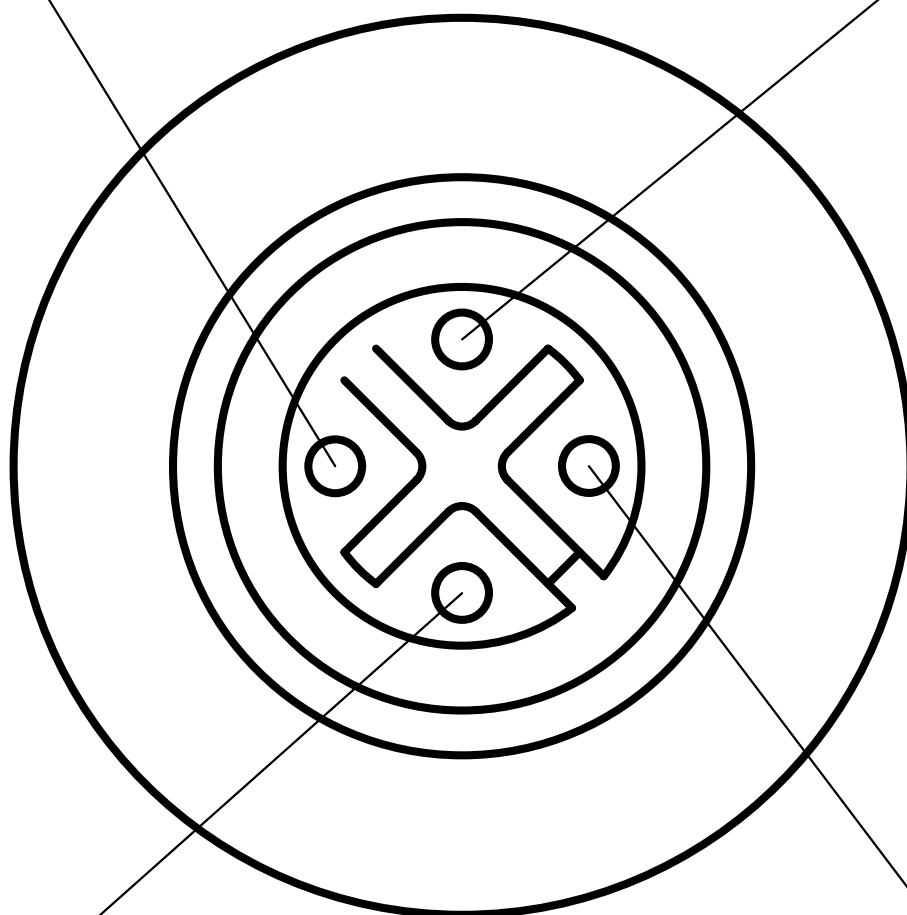


IMAGE 2/9

female M12

3

4



2

1

IMAGE 3/9

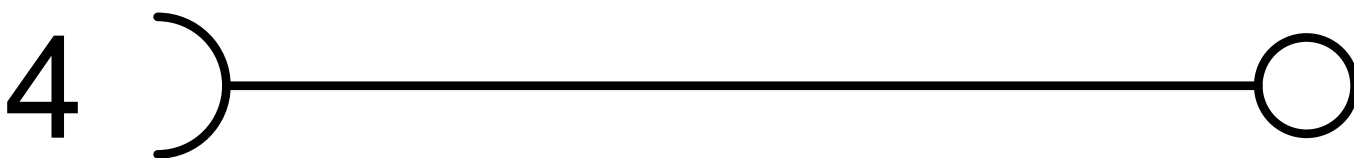
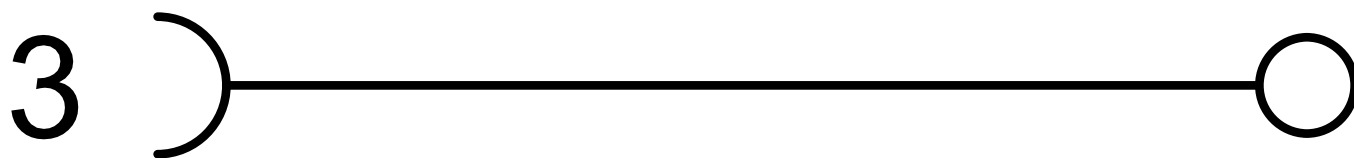
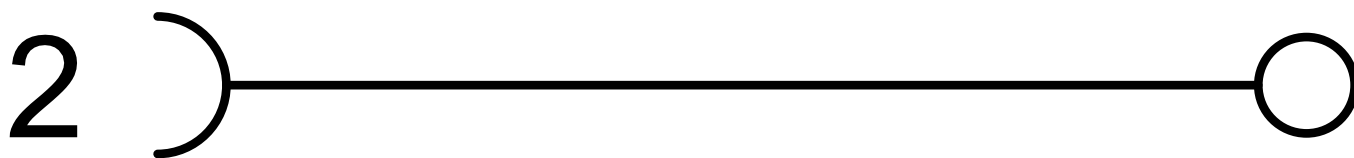
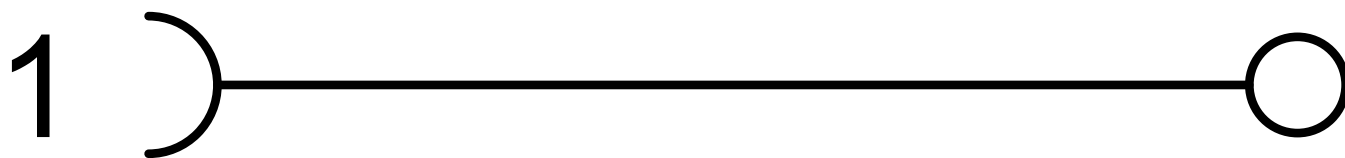


IMAGE 4/9

351151

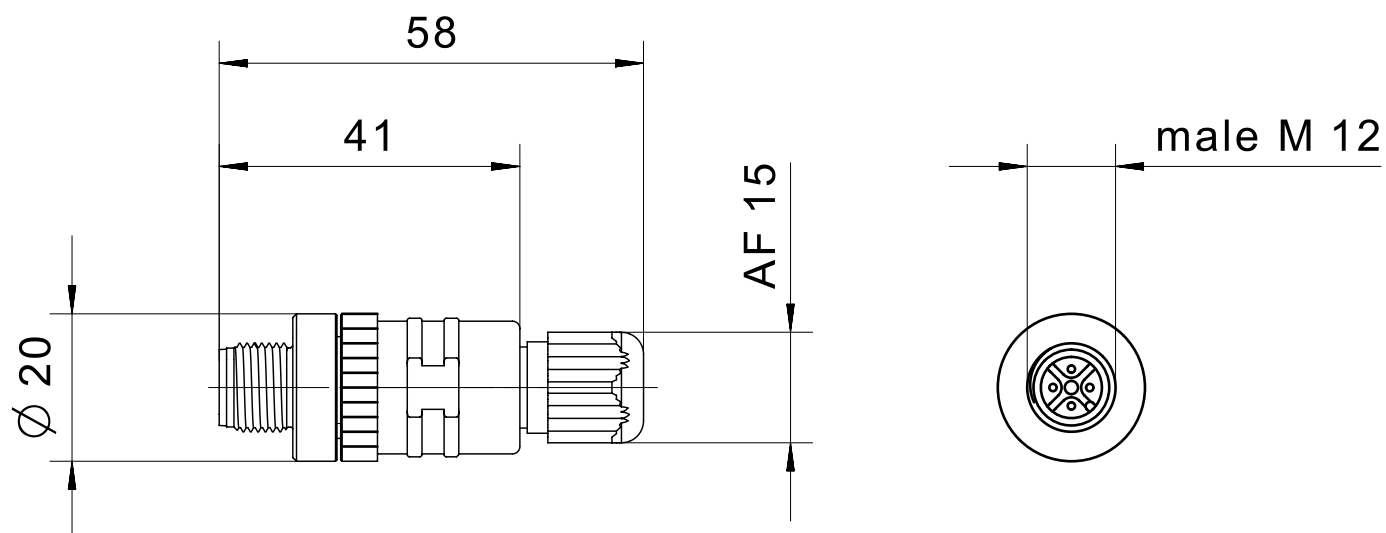
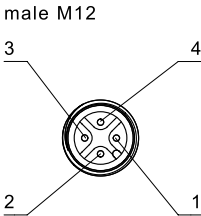


IMAGE 5/9




 Status	Maßstab		Benennung
	Revision	E	Kupplungsdose
	Gepr. Datum	29.03.19	Nummer
	Geprüft	pr1mi	Cat_351151

IMAGE 6/9

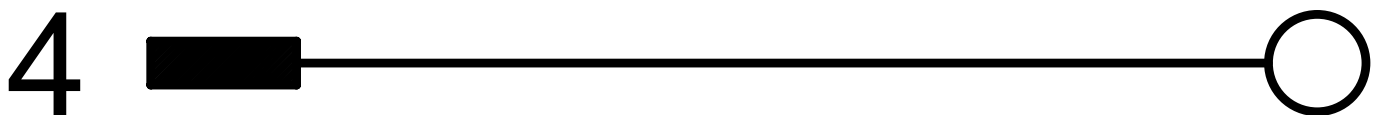


IMAGE 7/9

351152

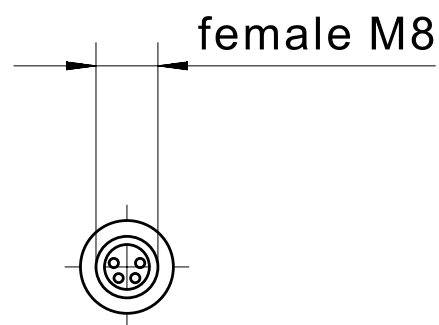
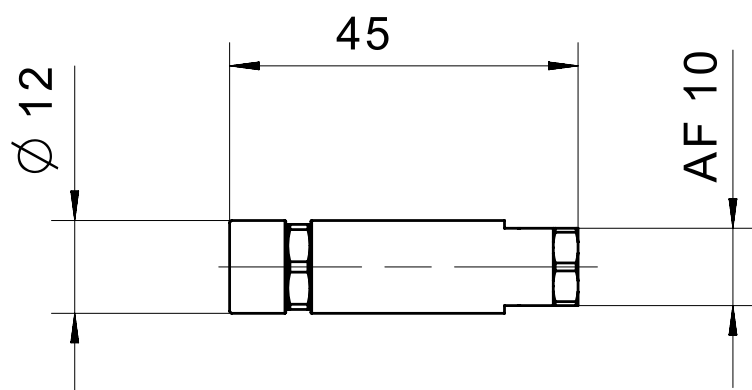


IMAGE 8/9

female M8

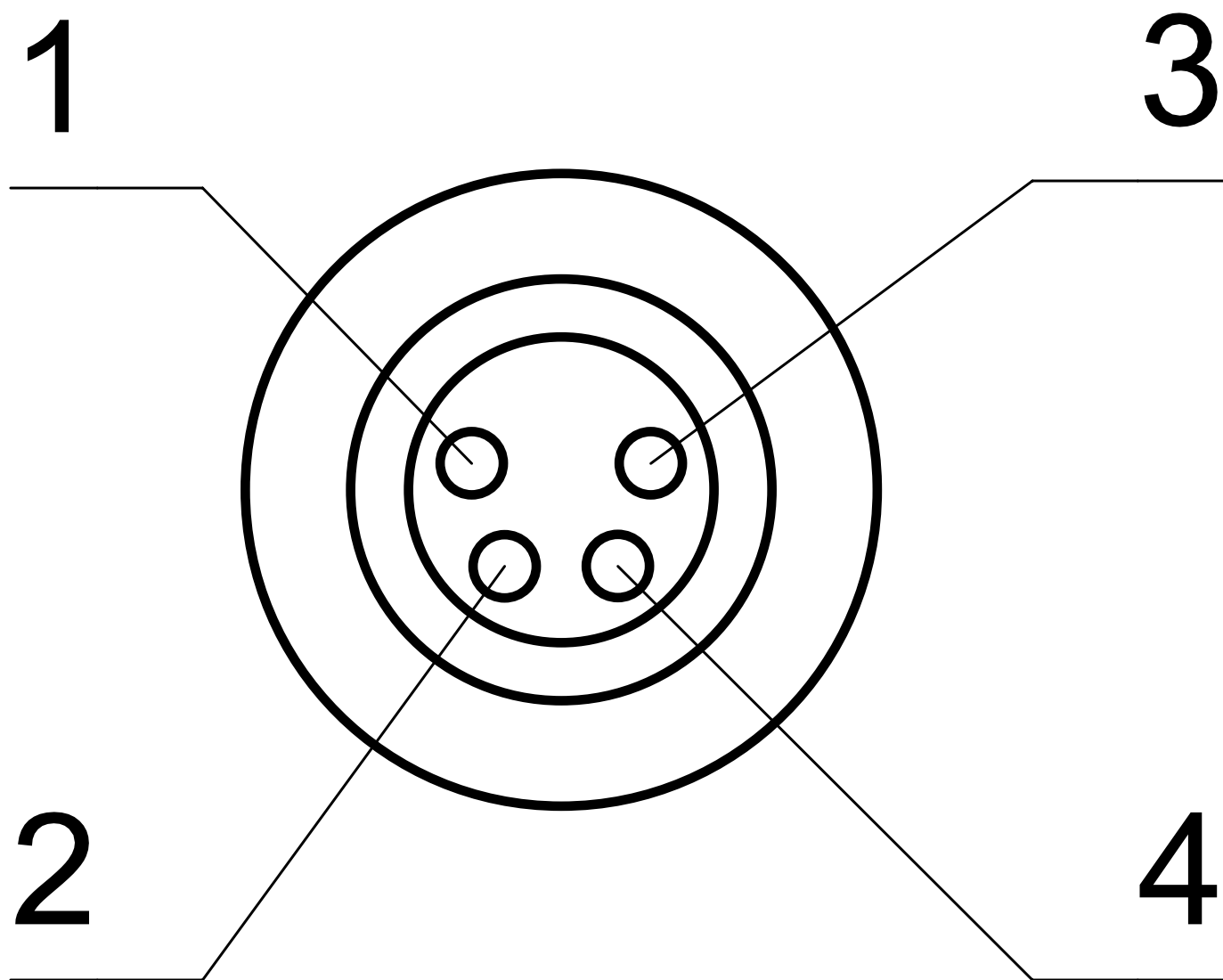
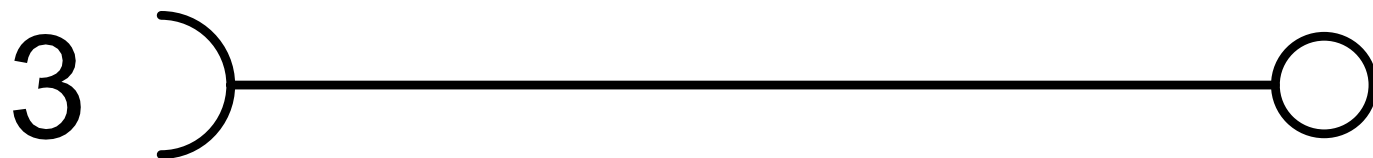
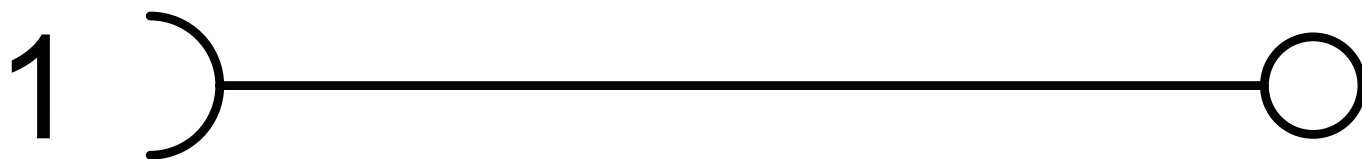


IMAGE 9/9



Product options

IMAGE 1/1

ORDERING KEY

351		Field-attachable connector
	150	M12 socket
	151	M12 connector
	152	M8 socket
	153	M8 connector

Características do artigo

Attribute	351150	351151	351152	351153	ED351150	ED351151 ▶
Max. switching current per contact	4 A				-	
Rated impulse withstand voltage (Uimp)	2500 V		800 V		-	
Pollution degree	3				-	
Operating voltage max.	240 V DC				-	
Operating voltage max.	240 V AC				-	
Nut material	CuZi nickel-plated				-	
Overmould material	PA				-	
Operating temperature min.	-40 °C				-	
Max. operating temperature	85 °C				-	
Min. storage temperature	-40 °C				-	
Max. storage temperature	85 °C				-	
Torque for nuts	0,5 N m				-	
Weight	23 g		10 g		-	
Connector type	M12 socket, straight	M12 connector, straight	M8 socket, straight	M8 connector, straight	-	
Connection type	Screw connection				-	
Cable diameter	3 - 6,5 mm		3,5 - 5,5 mm		-	
Number of pins	4				-	
Min. connection cross section	0.14 mm²				-	
Max. connection cross section	0.75 mm²		0.5 mm²		-	
Certified in accordance with	UL 2238/CSA22.2		-			

Attribute	ED351152	ED351153
Max. switching current per contact	-	-
Rated impulse withstand voltage (Uimp)	-	-
Pollution degree	-	-
Operating voltage max.	-	-
Operating voltage max.	-	-
Nut material	-	-
Overmould material	-	-
Operating temperature min.	-	-
Max. operating temperature	-	-
Min. storage temperature	-	-
Max. storage temperature	-	-
Torque for nuts	-	-
Weight	-	-
Connector type	-	-
Connection type	-	-
Cable diameter	-	-
Number of pins	-	-
Min. connection cross section	-	-
Max. connection cross section	-	-
Certified in accordance with	-	-