



## Atuador magnético 30426112V

O atuador magnético 30426112V é aplicado nos sensores modelo 165...V.

### Especificação Técnica

- Carcaça em aço inox

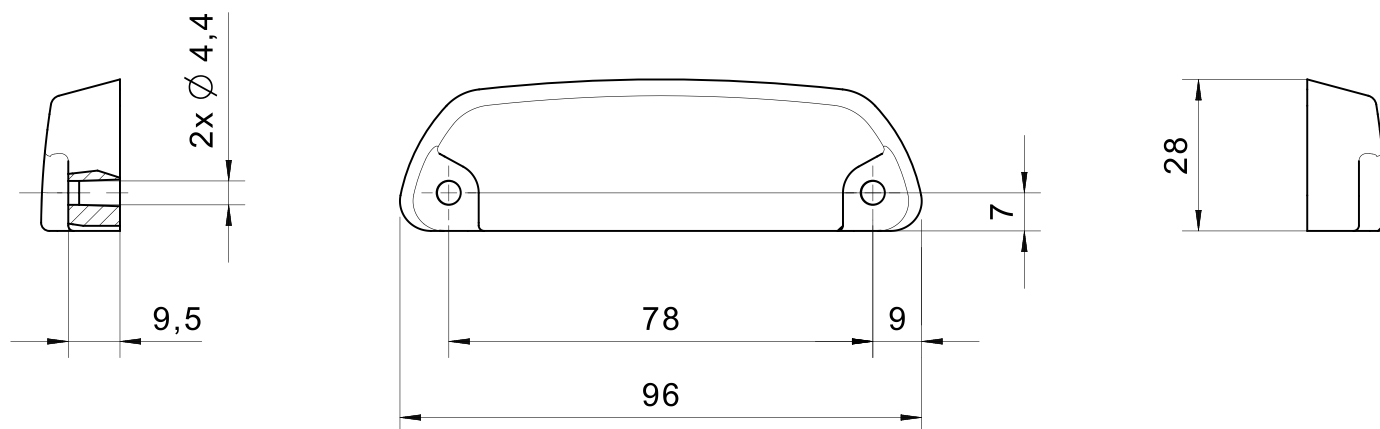
### Desenho técnico

IMAGE 1/1

**304 261 12 V**

**304 261 12 VS (increased switching distance)**

**for 165 ... series V**



## Product options

IMAGE 1/1

### ORDERING KEY

304 261 12			
	V		Standard
	V	S	Increased switching distance

## Características do artigo

Attribute	30426112V	30426112VS	30426112	30426112S	30426112PC	30426112SPC ▶
Coding acc. to EN ISO 14119	Low		-			
Suitable for sensor type(s)	165...V		siehe Datenblatt			
Dimensions	96x28x14.5		88x25x14			
Housing material	Stahlguss		PBT			
Housing colour	-		Schwarz		Gelb	
Mounting type	screwed					

Attribute	ED30426112	ED30426112PC	ED30426112S	ED30426112SPC	ED30426112V	ED30426112VS
Coding acc. to EN ISO 14119	-					
Suitable for sensor type(s)	-					
Dimensions	-					
Housing material	-					
Housing colour	-					
Mounting type	-					