

Atuador magnético 30426112V

O atuador magnético 30426112V é aplicado nos sensores modelo 165...V.

Especificação Técnica

- Carcaça em aço inox

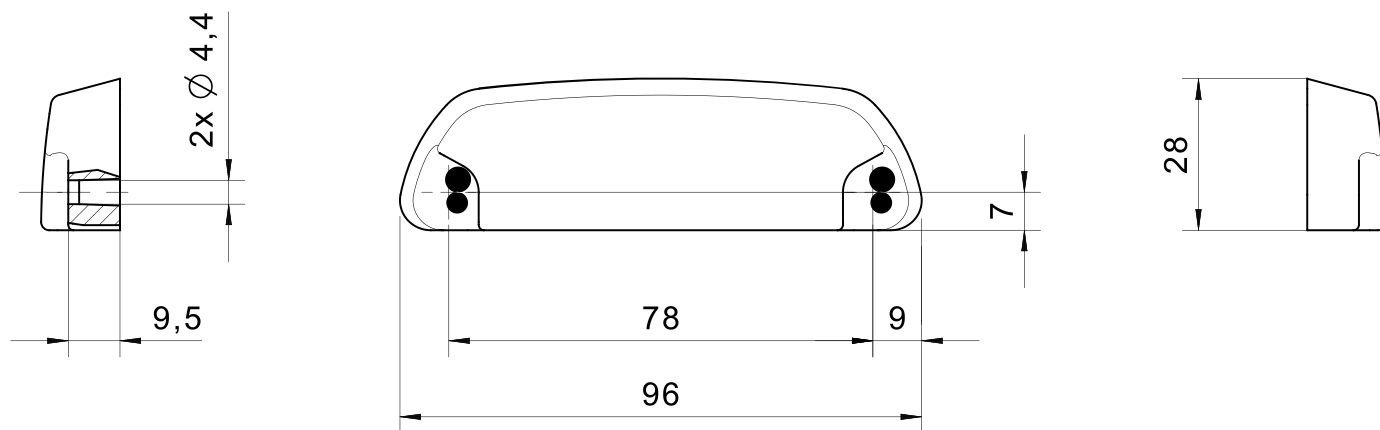
Desenho técnico

IMAGE 1/1

304 261 12 V

304 261 12 VS (increased switching distance)

for 165 ... series V



Product options

IMAGE 1/1

ORDERING KEY

304 261 12			
	V		Standard
	V	S	Increased switching distance

Características do artigo

Attribute	30426112V	30426112VS	30426112	30426112S	30426112PC	30426112SPC
Coding acc. to EN ISO 14119	Low		-			
Suitable for sensor type(s)	165...V		siehe Datenblatt			
Dimensions	96x28x14.5		88x25x14			
Housing material	Stahlguss		PBT			
Housing colour	-		Schwarz		Gelb	
Mounting type	screwed					