



## Atuador magnético 30079

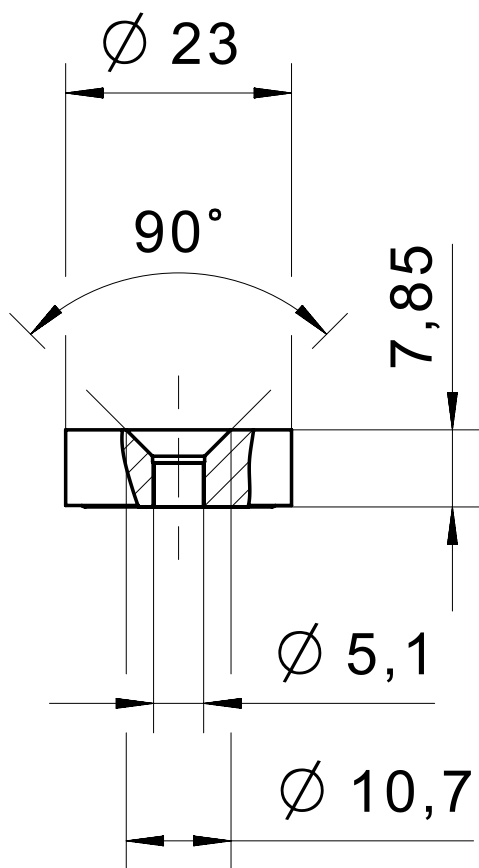
### Especificação Técnica

- Design compacto
- Materiais: aço inox ou plástico
- Design higiênico

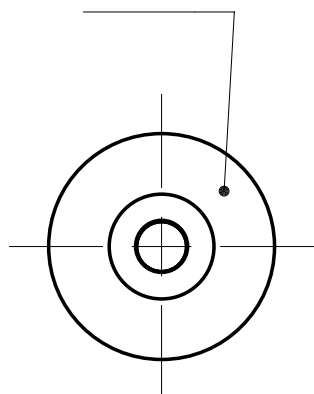
Desenho técnico

IMAGE 1/1

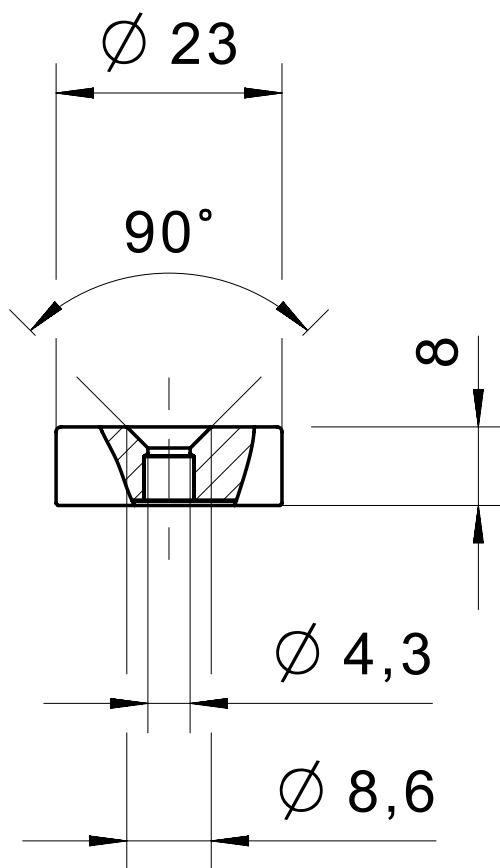
300790  
300795



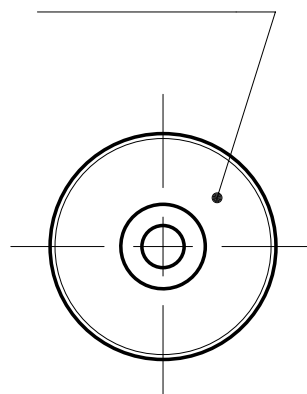
Pa6



300790V  
300795V



1.4404



## Product options

IMAGE 1/1

### ORDERING KEY

| 300 |   |    |   | Actuators                                      |
|-----|---|----|---|--|
|     | 7 |    |   |  |
|     |   | 90 |   | Magnetic field north                           |
|     |   | 90 | V | Magnetic field north – stainless steel housing |
|     |   | 95 |   | Magnetic field south                           |
|     |   | 95 | V | Magnetic field south – stainless steel housing |

## Características do artigo

| Attribute                   | 300790       | 300790V | 300795 | 300795V | ED300790 | ED300790V ▶ |
|-----------------------------|--------------|---------|--------|---------|----------|-------------|
| Coding acc. to EN ISO 14119 | Low          |         |        |         | -        |             |
| Suitable for sensor type(s) | 120..1 / 122 |         |        |         | -        |             |
| Dimensions                  | Ø 23 / H=8   |         |        |         | -        |             |
| Housing material            | PA 6         | 1.4404  | PA 6   | 1.4404  | -        |             |
| Housing colour              | rot          | silber  | grün   | silber  | -        |             |
| Mounting type               | Screw        |         |        |         | -        |             |

| Attribute                   | ED300795 | ED300795V |
|-----------------------------|----------|-----------|
| Coding acc. to EN ISO 14119 | -        |           |
| Suitable for sensor type(s) | -        |           |
| Dimensions                  | -        |           |
| Housing material            | -        |           |
| Housing colour              | -        |           |
| Mounting type               | -        |           |