



Atuador magnético 30078

O atuador magnético 30078 é aplicado nos sensor modelo 122..1 e 120..1.

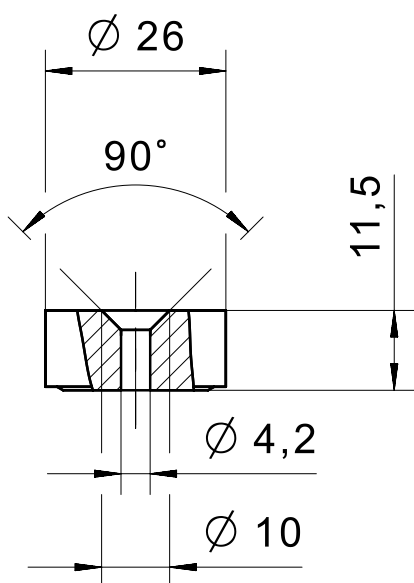
Especificação Técnica

- Design compacto
- Materiais disponíveis: aço inox e plástico
- Design higiênico

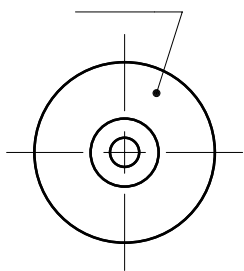
Desenho técnico

IMAGE 1/1

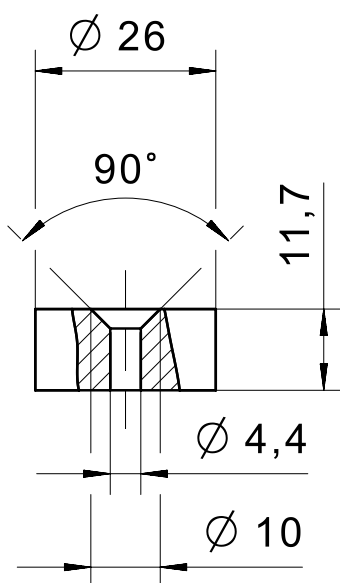
300780
300785



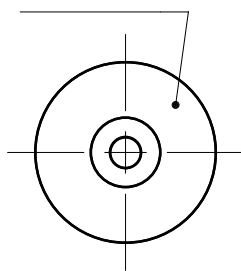
Pa6



300780V
300785V



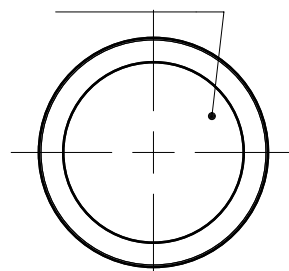
1.4404



300780VH
300785VH



1.4404



Product options

IMAGE 1/1

ORDERING KEY

| 300 | | | | Actuators |
|-----|---|----|----|--|
| | 7 | | | |
| | | 80 | | Magnetic field north |
| | | 80 | V | Magnetic field north – stainless steel housing |
| | | 80 | VH | Magnetic field north – hygienic version |
| | | 85 | | Magnetic field south |
| | | 85 | V | Magnetic field south – stainless steel housing |
| | | 85 | VH | Magnetic field south – hygienic version |

Características do artigo

| Attribute | 300780 | 300780V | 300780VH | 300785 | 300785V | 300785VH ▶ |
|-----------------------------|---------------|---------|-------------|---------------|---------|-------------|
| Coding acc. to EN ISO 14119 | Low | | | | | |
| Suitable for sensor type(s) | 120..1 / 122 | | | | | |
| Dimensions | Ø 26 / H=11,7 | | Ø 33 / H=12 | Ø 26 / H=11,7 | | Ø 33 / H=12 |
| Housing material | PA 6 | 1.4404 | | PA 6 | 1.4404 | |
| Housing colour | rot | silber | | grün | silber | |
| Mounting type | Screw | | Thread | Screw | | Thread |
| Thread | - | | M4x10 | - | | M4x10 |

| Attribute | ED300780 | ED300780V | ED300780VH | ED300785 | ED300785V | ED300785VH |
|-----------------------------|----------|-----------|------------|----------|-----------|------------|
| Coding acc. to EN ISO 14119 | - | | | | | |
| Suitable for sensor type(s) | - | | | | | |
| Dimensions | - | | | | | |
| Housing material | - | | | | | |
| Housing colour | - | | | | | |
| Mounting type | - | | | | | |
| Thread | - | | | | | |