



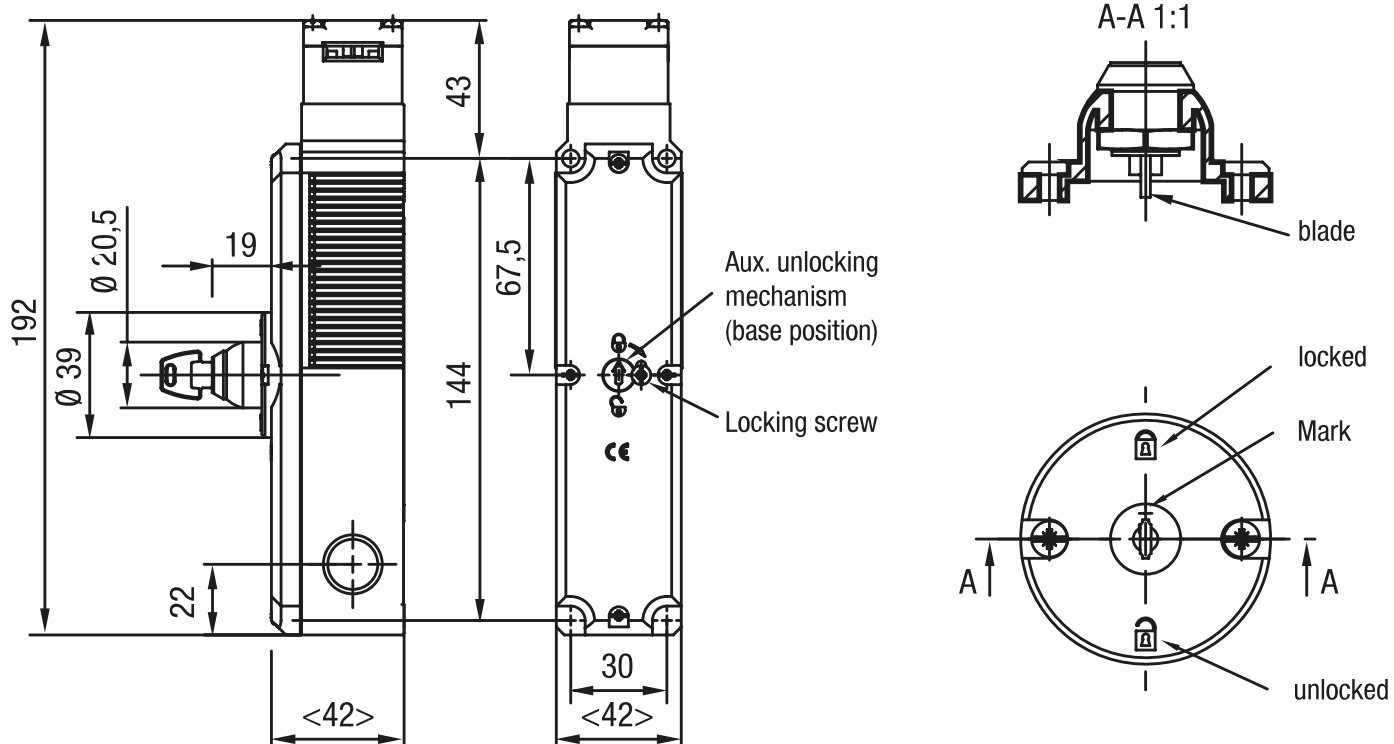
Chave de bloqueio

Especificação Técnica

- Material: aço inox 1.4301

Desenho técnico

IMAGE 1/2: ZLO SCHLOSS VERSCHIEDENSCHLIESSEND / INDIVIDUALSCHLÜSSEL, AUF 0° UND 180° ABZIEHBAR



Technical drawing of the CE 1000 lock assembly, showing side and top views with dimensions and labels.

Side View Dimensions:

- Overall height: 192
- Height of the main body: 144
- Height of the top section: 43
- Height of the bottom section: 22
- Height of the locking mechanism: 67,5
- Width of the main body: 42
- Width of the bottom section: 30
- Width of the locking mechanism: 19
- Inner diameter: $\varnothing 20,5$
- Outer diameter: $\varnothing 39$

Labels:

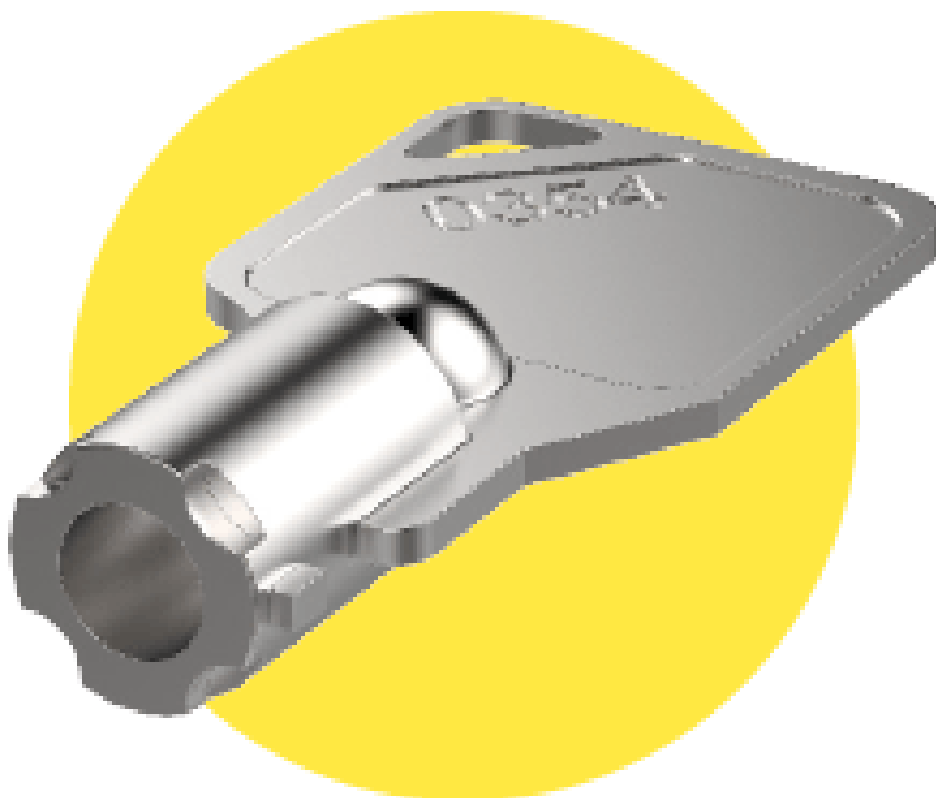
- Aux. unlocking mechanism (base position)
- Locking screw

Top View:

- Section line A-A 1:1
- blade
- locked
- direction of rotation
- Mark
- unlocked

Product options

IMAGE 1/2



ZL2 replacement key for lock, simultaneous locking (2 pcs.)

IMAGE 2/2

ORDERING KEY

ZL		Pivot for supporting release
	0	Lock, individual locking / individual key, removable at 0° and 180°
	1	Lock, simultaneous locking / universal key, removable at 0° and 180°
	2	Replacement key for lock, simultaneous locking (2 pcs.)

Características do artigo

Attribute	ZL0	ZL1	ZL2	EDZL0	EDZL1	EDZL2
Dimensions	D 39 x 19 mm		-			
Tightening position	2		-			
Locking mode	individual locking	simultaneous locking		-		
Key type	Individual key	Universal key	Replacement key	-		
Housing material	Kunststoff		Stahl rostfrei	-		
Mounting type	screwed		-			