



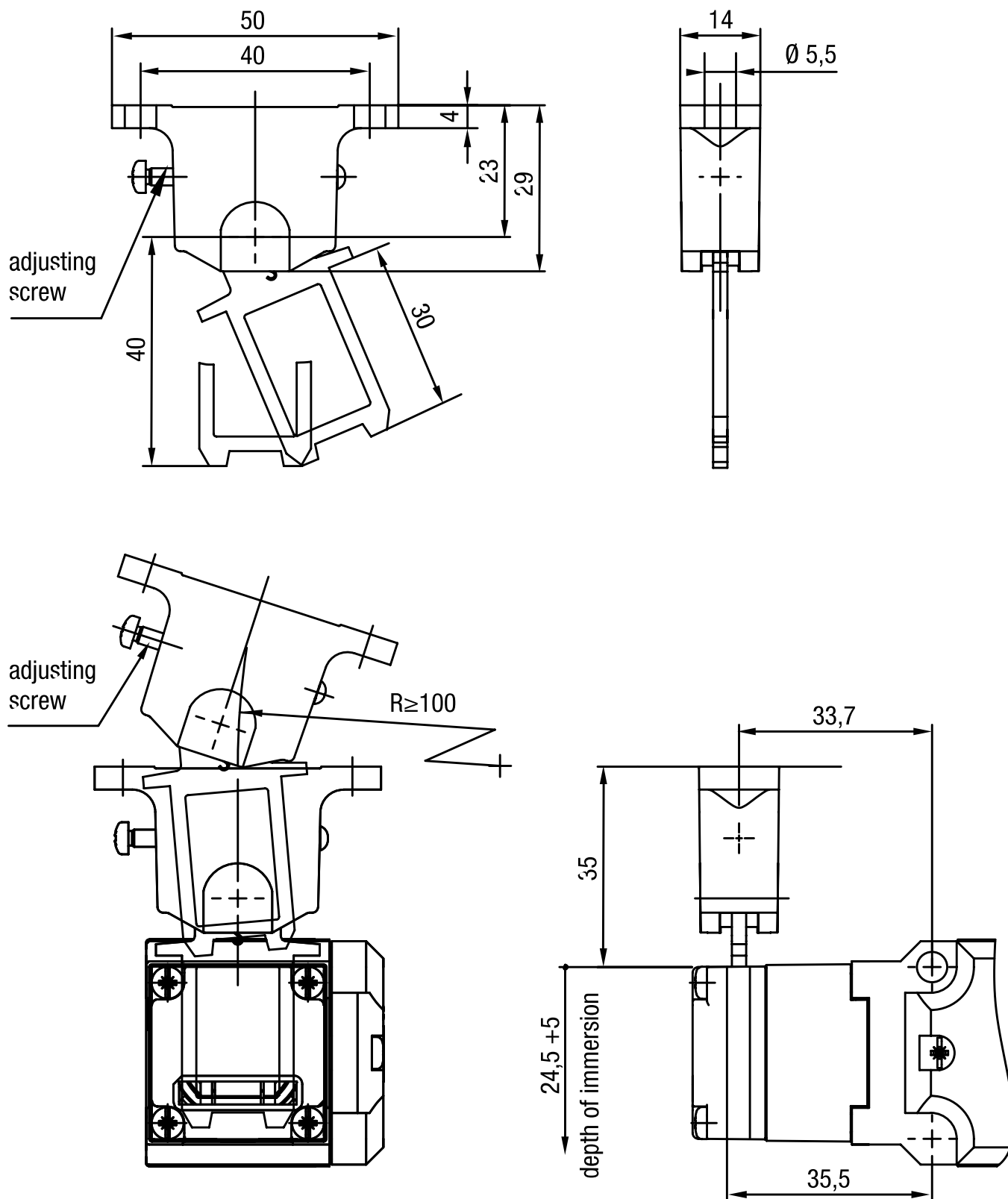
## Atuador ZBL5M

### Especificação Técnica

- Overrun 5 mm
- Raio  $\geq 100$ ,  $\leq 1000$
- Material: aço inox 1.4301, CR

Desenho técnico

IMAGE 1/1



### Características do artigo

| Attribute                     | ZBL5M                              |
|-------------------------------|------------------------------------|
| Dimensions                    | 50 x 63 x 14 mm (H/B/T)            |
| Door radius min.              | 100 mm                             |
| Overrun max.                  | 5 mm                               |
| Usability of insertion funnel | no                                 |
| Housing material              | Betaetiger/Schraube Stahl rostfrei |
| Mounting type                 | screwed                            |
| Installation                  | arbitrary                          |