



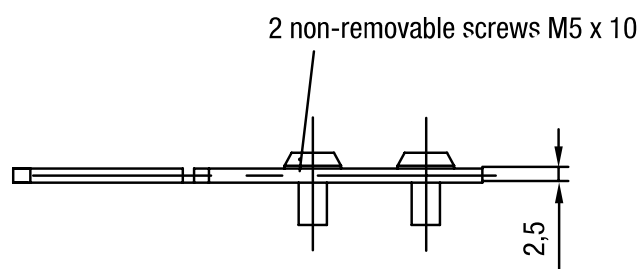
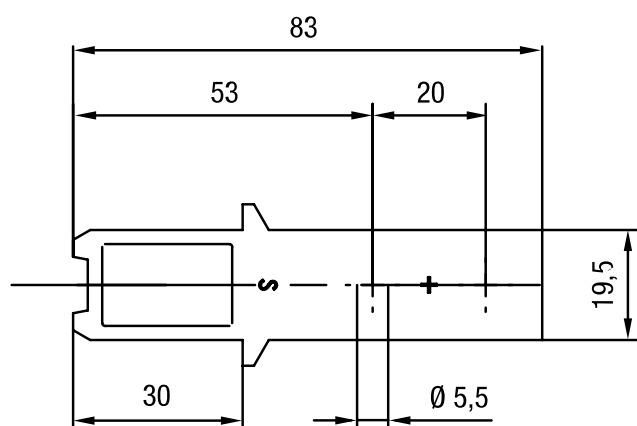
## Atuador ZBG5M

### Especificação Técnica

- Overrun 5 mm
- Raio  $\geq 300$
- Material: aço inox 1.4301

### Desenho técnico

IMAGE 1/1



### Características do artigo

Attribute	ZBG5M
Dimensions	29 x 83 x 2,5 mm (H/B/T)
Tensile force max.	3000 N
Door radius min.	300 mm
Overrun max.	5 mm
Usability of insertion funnel	no
Housing material	Betaetiger/Schraube Stahl rostfrei
Mounting type	screwed
Installation	arbitrary