



Chave de segurança com travamento ZM

A chave de segurança com travamento elobau modelo ZM é ideal para montagem em áreas com espaço restrito devido à seu design compacto.

Especificação Técnica

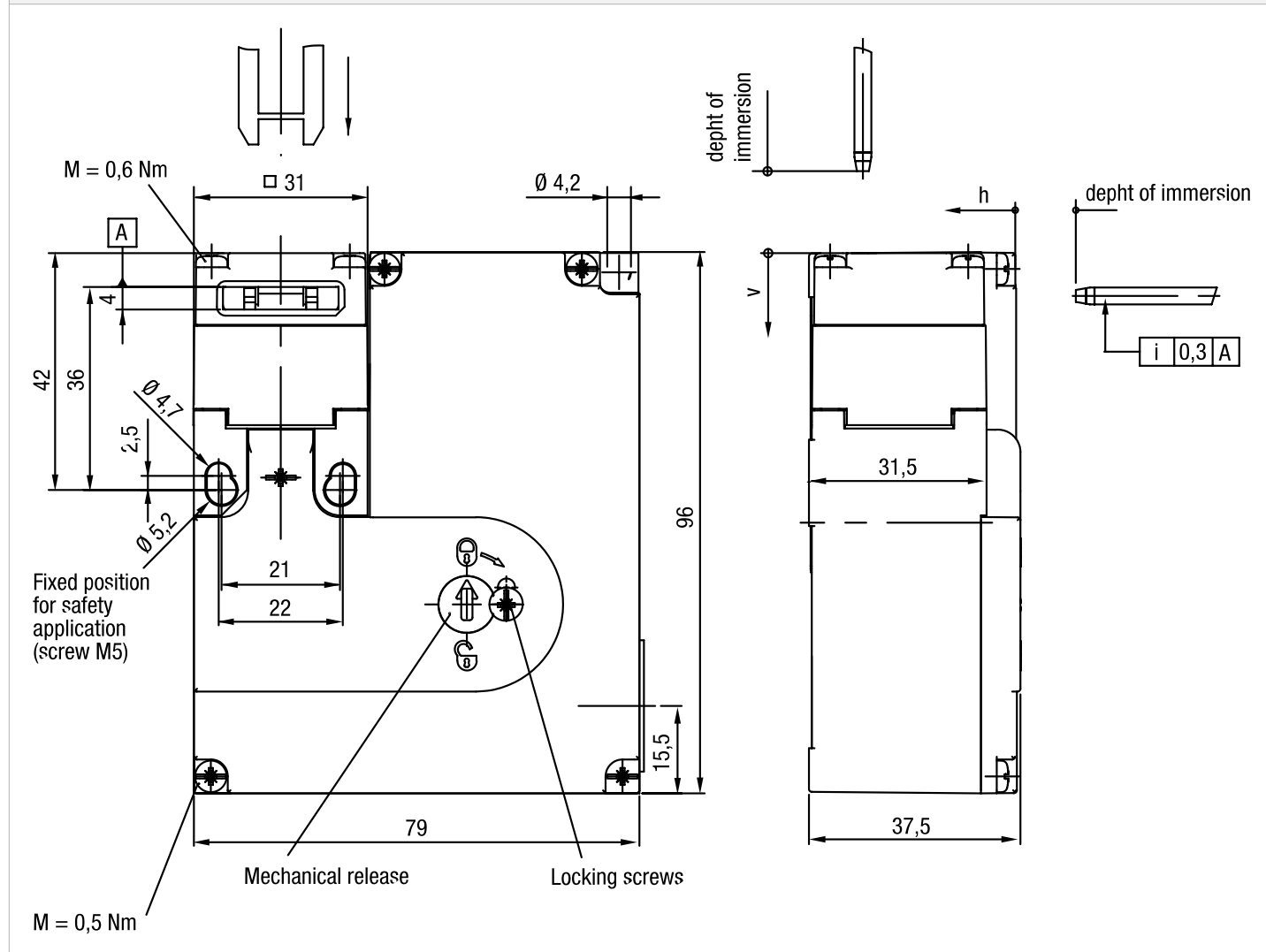
- 7 direções de acionamento
- Fácil montagem – 3 opções de entrada de cabos
- Diversas opções de travas mecânicas modelo ZB

Modelos de travas compatíveis:

ZBG5M
ZBG5G
ZBA5G
ZBG5GE
ZBA5GE ZBU5M
ZBL5M
ZBU5ME
ZBL5ME

Desenho técnico

IMAGE 1/3



Technical drawing of a mechanical part, likely a bracket or support, showing dimensions and assembly details.

Dimensions:

- Overall width: 20,5
- Overall height: 16
- Distance from top edge to center of mounting holes: 9
- Distance between mounting holes: 4
- Distance from right edge to center of mounting holes: 10,5
- Distance from right edge to center of mounting holes: 15,5

Assembly Details:

- Mounting holes are indicated by symbols with a cross and a dot.
- A screw M4 is shown with a note: "Protection against twisting for screw M4".
- A screw M 20 x 1,5 is shown.
- A dimension of 0,3 B is indicated for a specific feature.

Product options

IMAGE 1/1

ORDERING KEY

ZM				Safety interlock
	R			Spring force locked / closed-circuit principle
	A			Magnetically locked / open-circuit principle
		1030		24 V AC/DC operating voltage for magnet / 3 force-guided N.C.
		1120		24 V AC/DC operating voltage for magnet / 1 N.O. / 2 force-guided N.C.
			V	Approach direction front

Características do artigo

Attribute	ZMA1030V	ZMA1120V	ZMR1030V	ZMR1120V
Min. switching voltage	24 V DC			
Min. switching voltage	24 V AC			
Min. switching current	1 A			
Conv. thermal continuous current Ith	4 A			
Utilization category	AC-15 4A 230V / DC-13 4A 24V			
Rated insulation voltage (Ui)	250 V			
Rated impulse withstand voltage (Uimp)	2500 V			
Magnet operating voltage +10%/-15%	24 V AC/DC			
Power consumption	6 W			
Power-on time ED	100 %			
Open-circuit principle	yes		-	
Closed-circuit principle	-		yes	
Switching principle	Slow-action switch			
Short-circuit protection in accordance with IEC 60269-1 (fuse)	4 A gG			
Conditional short circuit current	100 A			
Pollution degree	3			
B10d acc. to EN ISO 13849-1	2000000			
Type acc. to EN ISO 14119	2			
Mission time in years	20 a			
Service life, mechanical (Cycles)	1 x 10^6			
Dimensions	37,5 x 79 x 96 mm (H/B/T)			
Emergency release present	no			
Auxiliary unlocking device present	yes			
Emergency unblocking present	no			
Locking force Fmax	2000 N			
Locking force FzH	1500 N			
Immersion depth	24.5 mm			
Overrun max.	5 mm			

Attribute	ZMA1030V	ZMA1120V	ZMR1030V	ZMR1120V
Number of N.C. door position	0			
Number of N.O. door position	0	1	0	1
Number of interlocks guard locking	1			
Number of N.O. guard locking	0			
Number of interlocks door position	2	1	2	1
Operating speed max.	20 m/min			
Actuation frequency	1200 1/h			
Actuation force/attraction force/retention force	35 / 30 / 20 N			
Housing material	Glasfaserverstaerkter Thermoplast			
Housing colour	Gehaeuse schwarz / Deckel gelb			
Contact material	Silberlegierung hauchvergoldet			
Protection class	IP67 DIN EN 60529			
Operating temperature min.	-20 °C			
Max. operating temperature	50 °C			
Min. storage temperature	-20 °C			
Max. storage temperature	50 °C			
Mounting type	screwed			
Weight	500 g			
Installation	arbitrary			
Connection type	3 x M20 x 1,5 Kabelverschraubung			
Min. connection cross section	0.34 mm²			
Max. connection cross section	1.5 mm²			
Certified in accordance with	EN ISO 60947-5-1 GS-ET-19 UL 508 / CSA 22.2			
CE label	yes			