



## Chave de segurança com travamento ZM

A chave de segurança com travamento elobau modelo ZM é ideal para montagem em áreas com espaço restrito devido à seu design compacto.

### Especificação Técnica

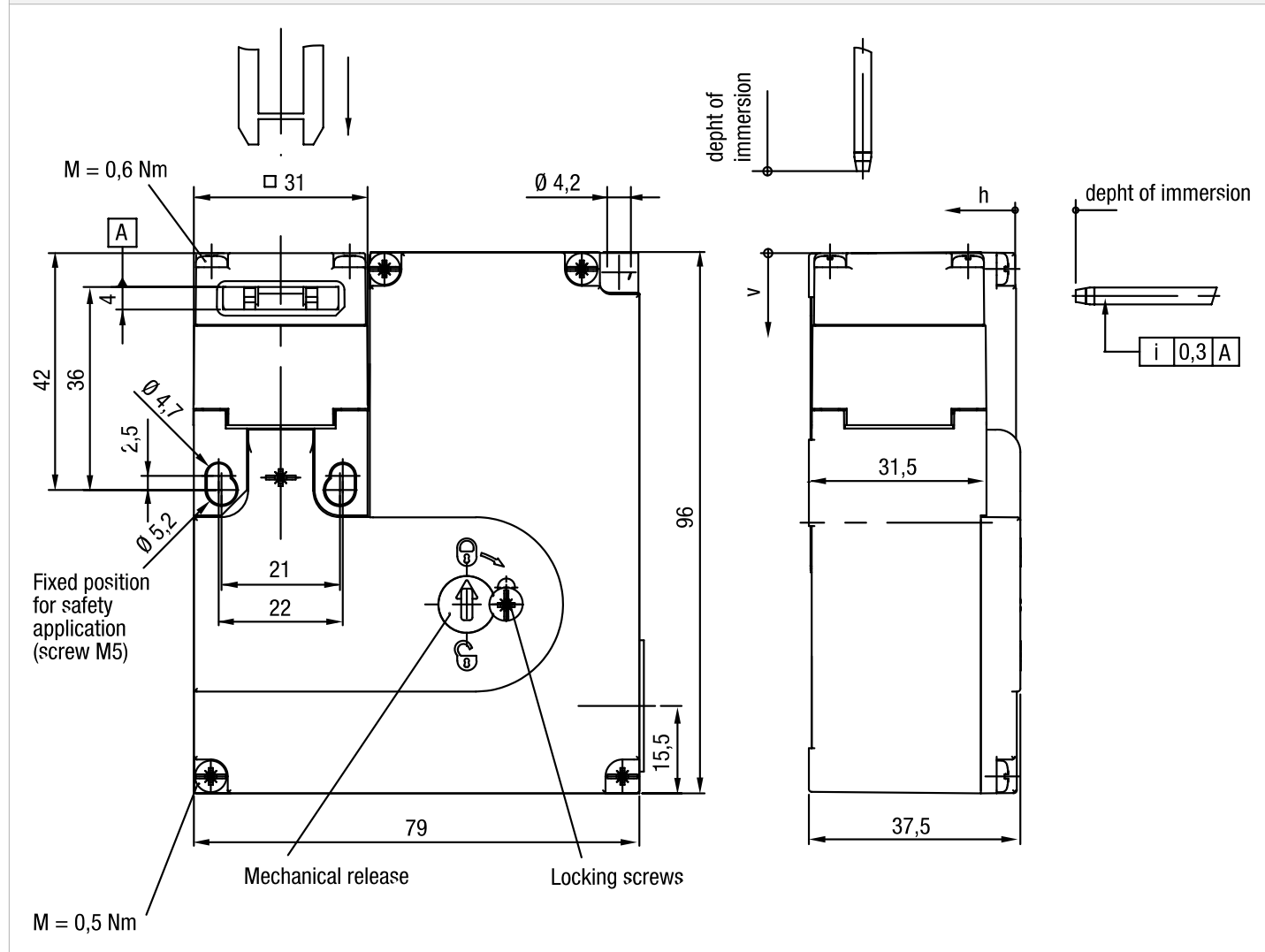
- 7 direções de acionamento
- Fácil montagem – 3 opções de entrada de cabos
- Diversas opções de travas mecânicas modelo ZB

### Modelos de travas compatíveis:

ZBG5M  
ZBG5G  
ZBA5G  
ZBG5GE  
ZBA5GE ZBU5M  
ZBL5M  
ZBU5ME  
ZBL5ME

Desenho técnico

IMAGE 1/3



Technical drawing of a mechanical part, likely a bracket or support, showing dimensions and assembly details.

**Dimensions:**

- Overall width: 20,5
- Overall height: 16
- Distance from top edge to center of mounting holes: 9
- Distance between mounting holes: 4
- Distance from right edge to center of mounting holes: 10,5
- Distance from right edge to center of mounting holes: 15,5

**Assembly Details:**

- Mounting holes are indicated by circles with crosshairs.
- A screw M4 is shown with a note: "Protection against twisting for screw M4".
- A screw M 20 x 1,5 is shown.
- A dimension of 0,3 B is indicated for a specific feature.

## Product options

IMAGE 1/1

### ORDERING KEY

| ZM |   |      |   | Safety interlock                                                       |
|----|---|------|---|------------------------------------------------------------------------|
|    | R |      |   | Spring force locked / closed-circuit principle                         |
|    | A |      |   | Magnetically locked / open-circuit principle                           |
|    |   | 1030 |   | 24 V AC/DC operating voltage for magnet / 3 force-guided N.C.          |
|    |   | 1120 |   | 24 V AC/DC operating voltage for magnet / 1 N.O. / 2 force-guided N.C. |
|    |   |      | V | Approach direction front                                               |

## Características do artigo

| Attribute                                                      | ZMA1030V                     | ZMA1120V | ZMR1030V | ZMR1120V | EDZMA1030V | EDZMA1120V ▶ |
|----------------------------------------------------------------|------------------------------|----------|----------|----------|------------|--------------|
| Min. switching voltage                                         | 24 V DC                      |          |          |          |            | -            |
| Min. switching voltage                                         | 24 V AC                      |          |          |          |            | -            |
| Min. switching current                                         | 1 A                          |          |          |          |            | -            |
| Conv. thermal continuous current I <sub>th</sub>               | 4 A                          |          |          |          |            | -            |
| Utilization category                                           | AC-15 4A 230V / DC-13 4A 24V |          |          |          |            | -            |
| Rated insulation voltage (U <sub>i</sub> )                     | 250 V                        |          |          |          |            | -            |
| Rated impulse withstand voltage (U <sub>imp</sub> )            | 2500 V                       |          |          |          |            | -            |
| Magnet operating voltage +10%/-15%                             | 24 V AC/DC                   |          |          |          |            | -            |
| Power consumption                                              | 6 W                          |          |          |          |            | -            |
| Power-on time ED                                               | 100 %                        |          |          |          |            | -            |
| Open-circuit principle                                         | yes                          |          | -        |          |            |              |
| Closed-circuit principle                                       | -                            |          | yes      |          |            |              |
| Switching principle                                            | Slow-action switch           |          |          |          |            | -            |
| Short-circuit protection in accordance with IEC 60269-1 (fuse) | 4 A gG                       |          |          |          |            | -            |
| Conditional short circuit current                              | 100 A                        |          |          |          |            | -            |
| Pollution degree                                               | 3                            |          |          |          |            | -            |
| B10d acc. to EN ISO 13849-1                                    | 2000000                      |          |          |          |            | -            |
| Type acc. to EN ISO 14119                                      | 2                            |          |          |          |            | -            |
| Mission time in years                                          | 20 a                         |          |          |          |            | -            |
| Service life, mechanical (Cycles)                              | 1 x 10 <sup>6</sup>          |          |          |          |            | -            |
| Dimensions                                                     | 37,5 x 79 x 96 mm (H/B/T)    |          |          |          |            | -            |
| Emergency release present                                      | no                           |          |          |          |            | -            |
| Auxiliary unlocking device present                             | yes                          |          |          |          |            | -            |
| Emergency unblocking present                                   | no                           |          |          |          |            | -            |
| Locking force F <sub>max</sub>                                 | 2000 N                       |          |          |          |            | -            |
| Locking force F <sub>zH</sub>                                  | 1500 N                       |          |          |          |            | -            |
| Immersion depth                                                | 24.5 mm                      |          |          |          |            | -            |

| Attribute                                        | ZMA1030V                                    | ZMA1120V | ZMR1030V | ZMR1120V | EDZMA1030V | EDZMA1120V ▶ |
|--------------------------------------------------|---------------------------------------------|----------|----------|----------|------------|--------------|
| Overrun max.                                     | 5 mm                                        |          |          |          | -          | -            |
| Number of N.C. door position                     | 0                                           |          |          |          | -          | -            |
| Number of N.O. door position                     | 0                                           | 1        | 0        | 1        | -          | -            |
| Number of interlocks guard locking               | 1                                           |          |          |          | -          | -            |
| Number of N.O. guard locking                     | 0                                           |          |          |          | -          | -            |
| Number of interlocks door position               | 2                                           | 1        | 2        | 1        | -          | -            |
| Operating speed max.                             | 20 m/min                                    |          |          |          | -          | -            |
| Actuation frequency                              | 1200 1/h                                    |          |          |          | -          | -            |
| Actuation force/attraction force/retention force | 35 / 30 / 20 N                              |          |          |          | -          | -            |
| Housing material                                 | Glasfaserverstaerkter Thermoplast           |          |          |          | -          | -            |
| Housing colour                                   | Gehaeuse schwarz / Deckel gelb              |          |          |          | -          | -            |
| Contact material                                 | Silberlegierung hauchvergoldet              |          |          |          | -          | -            |
| Protection class                                 | IP67 DIN EN 60529                           |          |          |          | -          | -            |
| Operating temperature min.                       | -20 °C                                      |          |          |          | -          | -            |
| Max. operating temperature                       | 50 °C                                       |          |          |          | -          | -            |
| Min. storage temperature                         | -20 °C                                      |          |          |          | -          | -            |
| Max. storage temperature                         | 50 °C                                       |          |          |          | -          | -            |
| Mounting type                                    | screwed                                     |          |          |          | -          | -            |
| Weight                                           | 500 g                                       |          |          |          | -          | -            |
| Installation                                     | arbitrary                                   |          |          |          | -          | -            |
| Connection type                                  | 3 x M20 x 1,5 Kabelverschraubung            |          |          |          | -          | -            |
| Min. connection cross section                    | 0.34 mm²                                    |          |          |          | -          | -            |
| Max. connection cross section                    | 1.5 mm²                                     |          |          |          | -          | -            |
| Certified in accordance with                     | EN ISO 60947-5-1 GS-ET-19 UL 508 / CSA 22.2 |          |          |          | -          | -            |
| CE label                                         | yes                                         |          |          |          | -          | -            |

| Attribute                                                      | EDZMR1030V | EDZMR1120V |
|----------------------------------------------------------------|------------|------------|
| Min. switching voltage                                         | -          | -          |
| Min. switching voltage                                         | -          | -          |
| Min. switching current                                         | -          | -          |
| Conv. thermal continuous current Ith                           | -          | -          |
| Utilization category                                           | -          | -          |
| Rated insulation voltage (Ui)                                  | -          | -          |
| Rated impulse withstand voltage (Uimp)                         | -          | -          |
| Magnet operating voltage +10%/-15%                             | -          | -          |
| Power consumption                                              | -          | -          |
| Power-on time ED                                               | -          | -          |
| Open-circuit principle                                         | -          | -          |
| Closed-circuit principle                                       | -          | -          |
| Switching principle                                            | -          | -          |
| Short-circuit protection in accordance with IEC 60269-1 (fuse) | -          | -          |
| Conditional short circuit current                              | -          | -          |
| Pollution degree                                               | -          | -          |
| B10d acc. to EN ISO 13849-1                                    | -          | -          |
| Type acc. to EN ISO 14119                                      | -          | -          |
| Mission time in years                                          | -          | -          |
| Service life, mechanical (Cycles)                              | -          | -          |
| Dimensions                                                     | -          | -          |
| Emergency release present                                      | -          | -          |
| Auxiliary unlocking device present                             | -          | -          |
| Emergency unblocking present                                   | -          | -          |
| Locking force Fmax                                             | -          | -          |
| Locking force FzH                                              | -          | -          |
| Immersion depth                                                | -          | -          |
| Overrun max.                                                   | -          | -          |
| Number of N.C. door position                                   | -          | -          |

| Attribute                                        | EDZMR1030V | EDZMR1120V |
|--------------------------------------------------|------------|------------|
| Number of N.O. door position                     | -          | -          |
| Number of interlocks guard locking               | -          | -          |
| Number of N.O. guard locking                     | -          | -          |
| Number of interlocks door position               | -          | -          |
| Operating speed max.                             | -          | -          |
| Actuation frequency                              | -          | -          |
| Actuation force/attraction force/retention force | -          | -          |
| Housing material                                 | -          | -          |
| Housing colour                                   | -          | -          |
| Contact material                                 | -          | -          |
| Protection class                                 | -          | -          |
| Operating temperature min.                       | -          | -          |
| Max. operating temperature                       | -          | -          |
| Min. storage temperature                         | -          | -          |
| Max. storage temperature                         | -          | -          |
| Mounting type                                    | -          | -          |
| Weight                                           | -          | -          |
| Installation                                     | -          | -          |
| Connection type                                  | -          | -          |
| Min. connection cross section                    | -          | -          |
| Max. connection cross section                    | -          | -          |
| Certified in accordance with                     | -          | -          |
| CE label                                         | -          | -          |