

## Blocos de contato para botões de emergência

O bloco de contato ideal para cada aplicação! As funções podem ser atribuídas ao módulo correspondente que é identificado por sua cor.

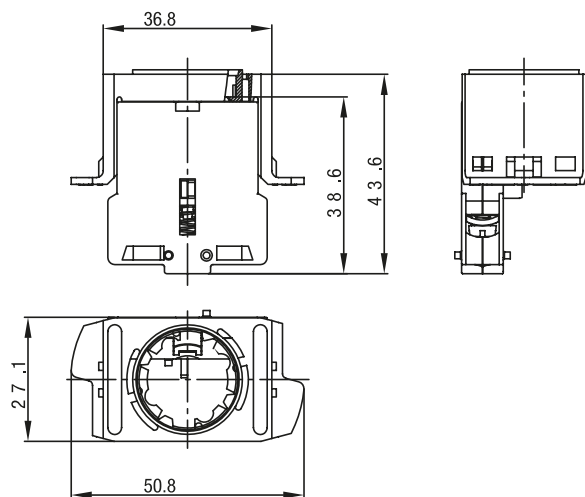
### Especificação Técnica

- Blocos de contato pré-montados
- Contatos de segurança impulsados positivamente para alternar a função de parada de emergência
- Contato (NA) para diagnóstico externo
- Módulo de proteção contra falhas verifica a conexão permanente do botão e do elemento de contato
- Módulo de iluminação para botões com iluminação LED integrada no colar de proteção contra obstrução

Desenho técnico

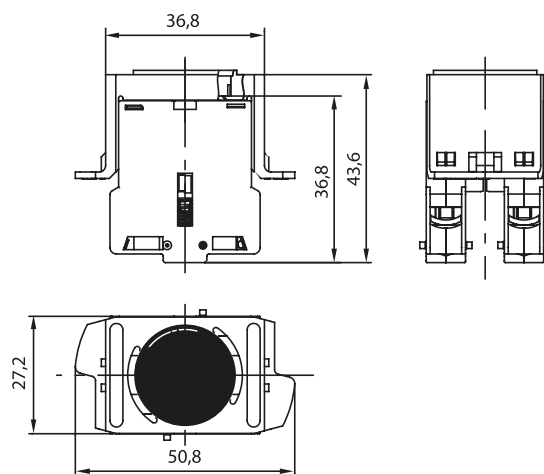
IMAGE 1/3

**KE contact element with 1 N.C. contact**



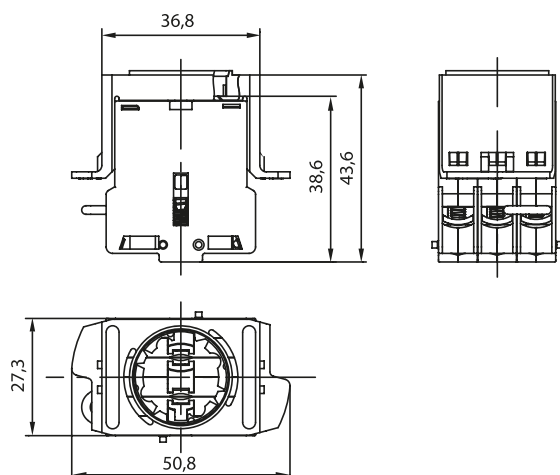
1 x 879901

**KE contact element with 2 N.C. contacts**



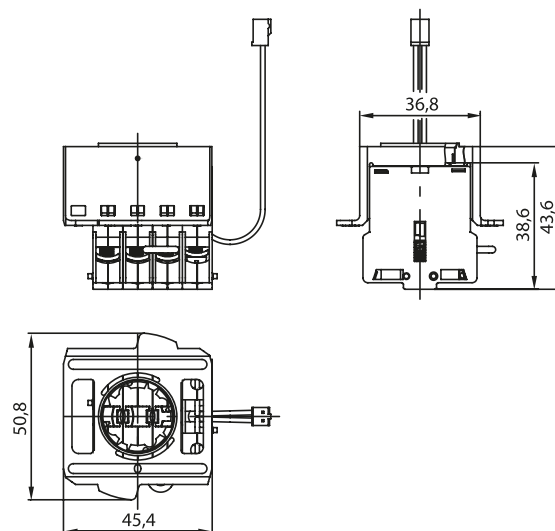
2 x 879901

**KE contact element with 2 N.C. contacts /  
failure protection**



2 x 879901  
1 x 879902

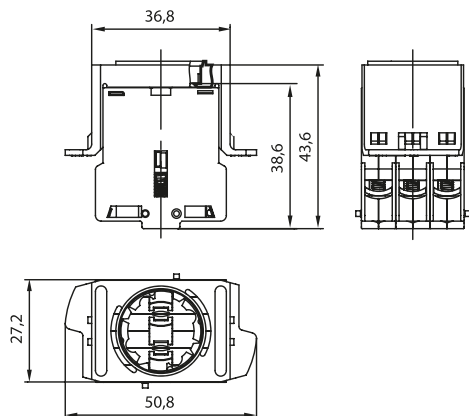
**KE contact element with 2 N.C. contacts /  
failure protection / illumination**



2 x 879901  
1 x 879902  
1 x 879903

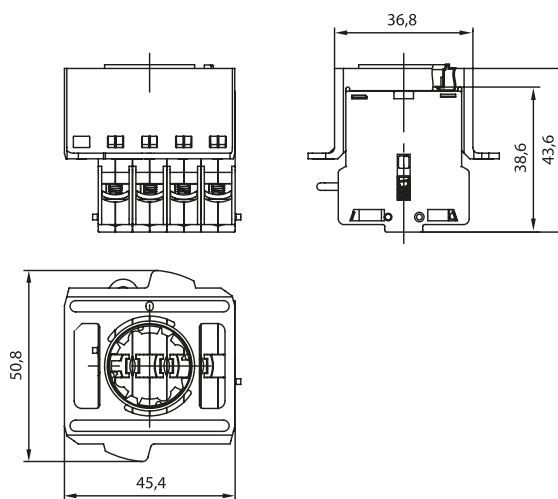
IMAGE 2/3

**KE contact element with 2 N.C. con-  
tacts / 1 N.O. contact**



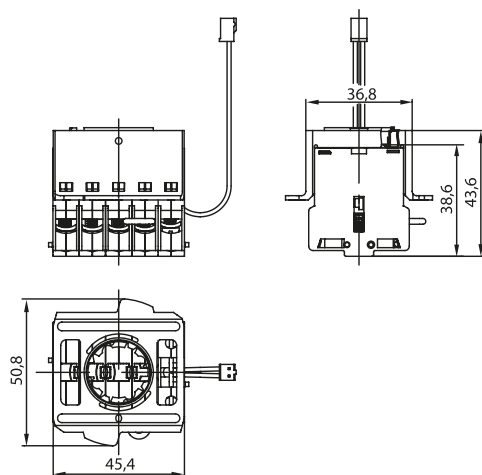
1 x 879900  
2 x 879901

**KE contact element with 2 N.C. contacts /  
1 N.O. contact / failure protection**



1 x 879900  
2 x 879901  
1 x 879902

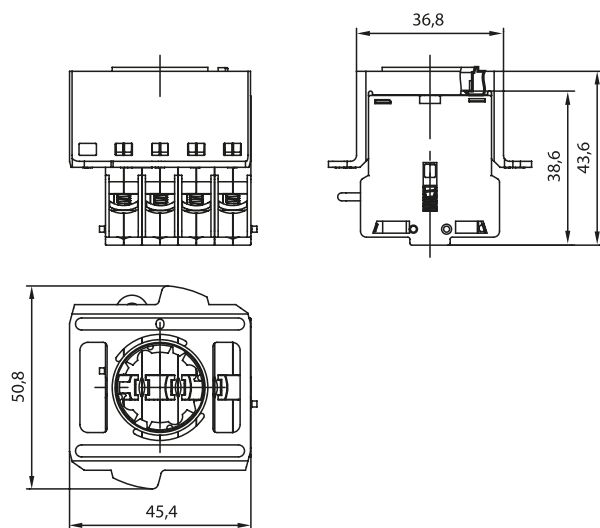
**KE contact element with 2 N.C. contacts / 1 N.O. contact / failure protection / illumination**



1 x 879900  
2 x 879901  
1 x 879902  
1 x 879903

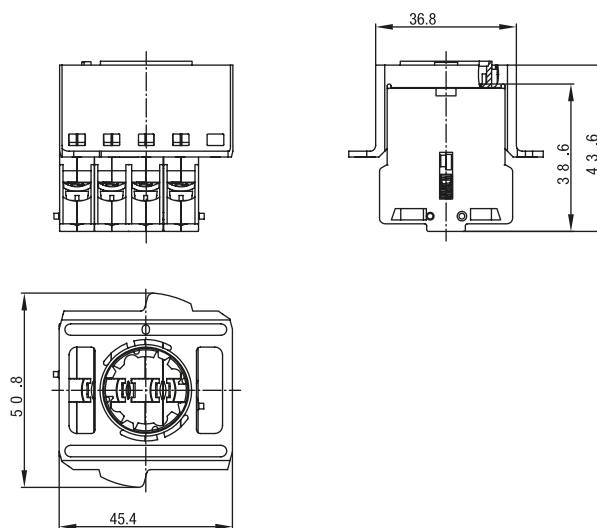
IMAGE 3/3

**KE contact element with 3 N.C. contacts /  
failure protection**



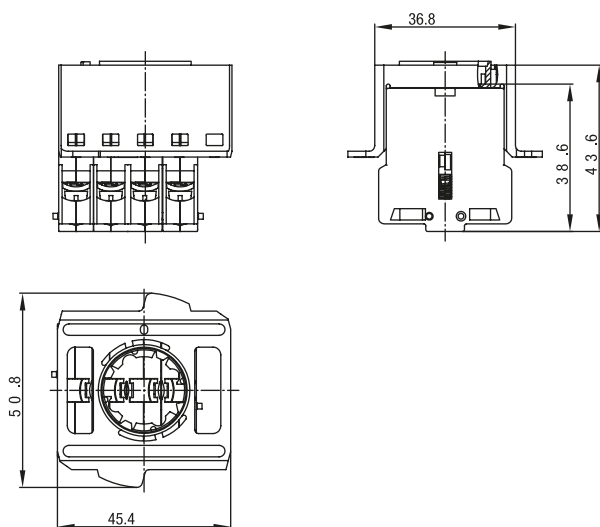
3 x 879901  
1 x 879902

**KE contact element with 3 N.C. contacts /  
1 N.O. contact**



1 x 879900  
3 x 879901

**KE contact element with 4 N.C. contacts**



4 x 879901

## Product options

IMAGE 1/1

### ORDERING KEY

KE			Contact element with frame
			<b>Number and type of contact elements</b>
	10		1 N.C.
	20		2 N.C.
	20	SF	2 N.C. / failure protection
	20	SFB	2 N.C. / failure protection / illumination
	21		2 N.C. / 1 N.O.
	21	SF	2 N.C. / 1 N.O. / failure protection
	21	SFB	2 N.C. / 1 N.O. / failure protection / illumination
	30	SF	3 N.C. / failure protection
	31		3 N.C. / 1 N.O.
	40		4 N.C.
			Other contact elements on request