



Sensor de segurança magnético 114

O sensor de segurança magnético 114 é uma solução simples e compacta, ideal para locais com espaço restrito. Esta série pode ser controlada em várias direções, permitindo instalação variável, como por exemplo em perfis de portas automáticas.

Especificação Técnica

- Design compacto
- Sinal de saída à cabo ou através de conector M8
- Diagnóstico através de controle de contato

Desenho técnico

IMAGE 1/3

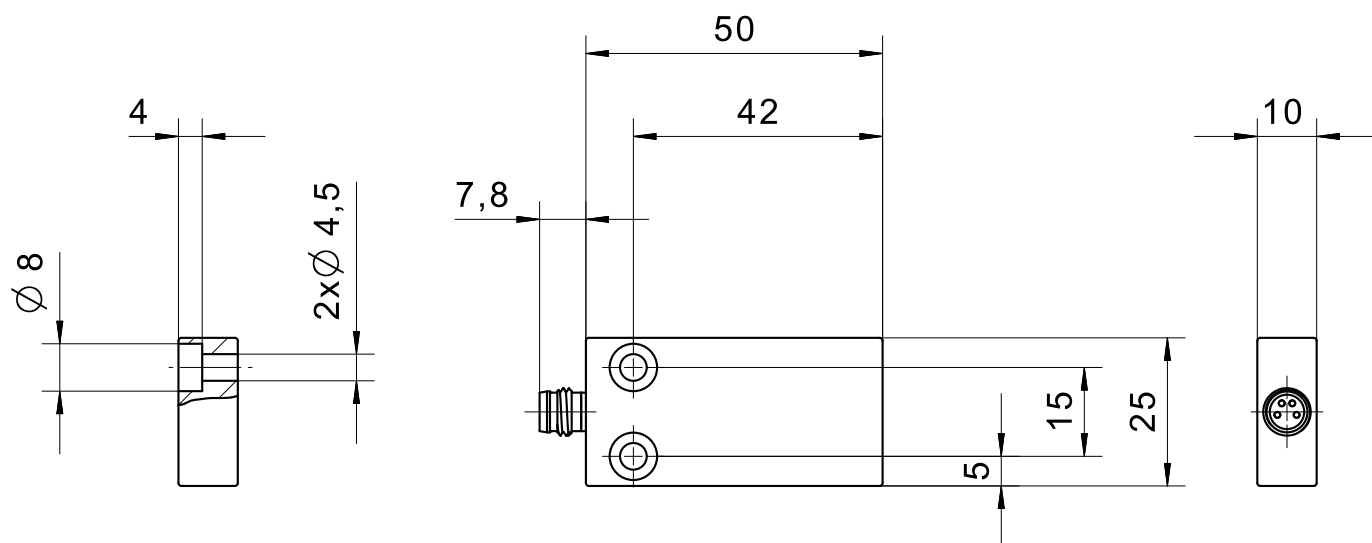
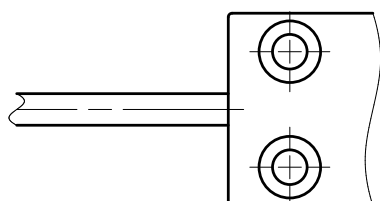


IMAGE 2/3



male M8

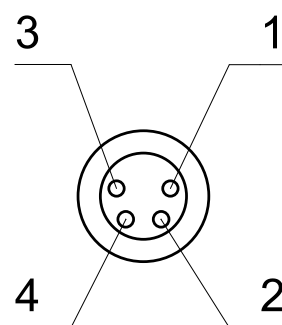
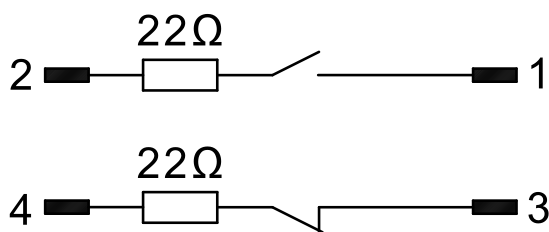
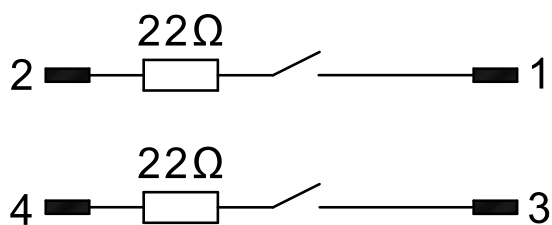


IMAGE 3/3

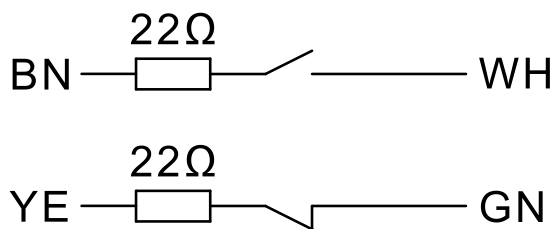
114270A0D



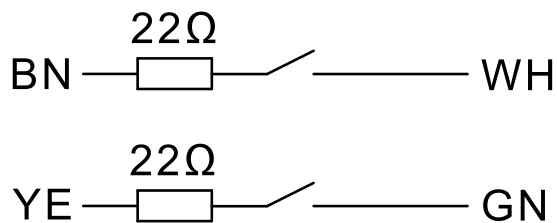
114V62A0D



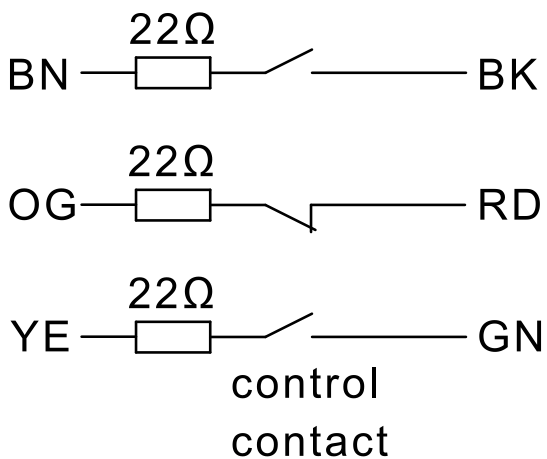
114270



114V62

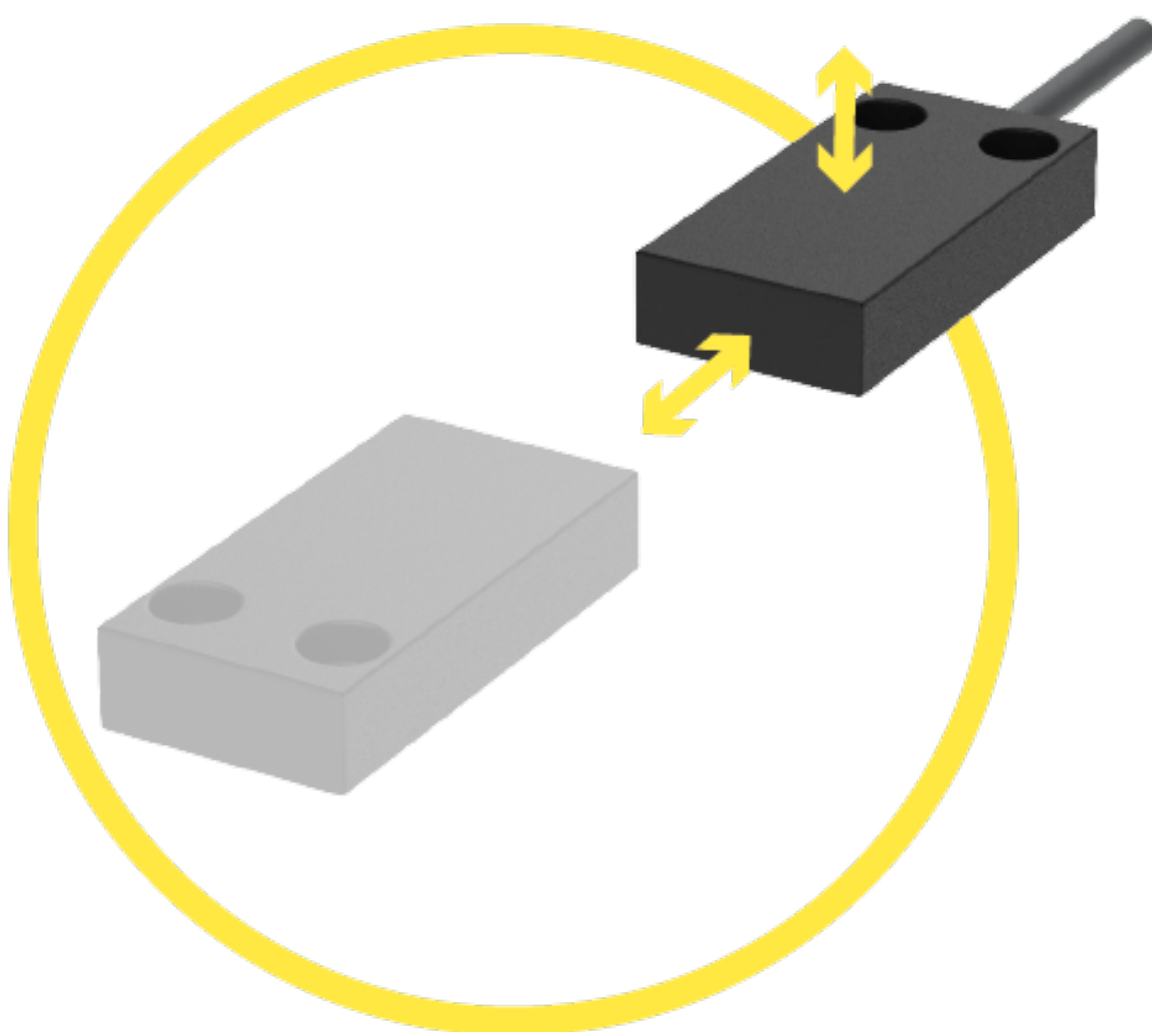


114570



Product options

IMAGE 1/3



Suitable for front and top actuation. Offset depending on magnet system: max. XXX mm vertical and XXX mm horizontal. Front and top actuation. Operating distance (Sao) from 2 to 7 mm. Assured switch-off distance (Sar) from 12 to 22 mm.

IMAGE 2/3

ORDERING KEY

	114V62	114V62A0D	114270
Cubic plastic housing	X	X	X
M8x1 connector, 4-pin, nickel-plated brass	-	X	-
Connection cable 1 m*	X	-	X
N.O./N.O. contacts	X	X	-
N.O./N.C. contacts	-	-	X
Additional N.O. control contact	-	-	-
Coded	X	X	X
Uncoded	-	-	-

	114270A0D	114570
Cubic plastic housing	X	X
M8x1 connector, 4-pin, nickel-plated brass	X	-
Connection cable 1 m*	-	X
N.O./N.O. contacts	-	-
N.O./N.C. contacts	X	X
Additional N.O. control contact	-	X
Coded	X	X
Uncoded	-	-

* Other cable lengths, cable materials and connector types on request

IMAGE 3/3

MATCHING ACTUATORS

Actuators	114V62			114V62A0D			114270			114270A0D			114570		
	S _{0 min}	S _{ao}	S _{ar}	S _{0 min}	S _{ao}	S _{ar}	S _{0 min}	S _{ao}	S _{ar}	S _{0 min}	S _{ao}	S _{ar}	S _{0 min}	S _{ao}	S _{ar}
304 275 02 ^A	0.5	7	15	0.5	7	15	0.5	7	19	0.5	7	19	0.5	4	22
304 275 02 ^B	0.5	8	12	0.5	8	12	-	-	-	-	-	-	-	-	-
304 275 02 ^C	0.5	8	12	0.5	8	12	0.5	7	17	0.5	7	17	0.5	4	20
304 275 32 ^D	0.5	4	13	0.5	4	13	0.5	2.5	14	0.5	2.5	14	0.5	2	14

S_{0 min} = minimum switching distance (mm), S_{ao} = operating distance (mm), S_{ar} = assured switch-off distance (mm)

^A Actuation direction: one above the other / parallel, ^B Actuation direction: one above the other / lateral (from connection side), ^C Actuation direction: one above the other / lateral (from opposite connection side), ^D Actuation direction: front

Características do artigo

Attribute	114V62A0D	114270A0D	114V62	114270	114570	ED114V62 ▶
Min. switching voltage	19.2 V DC					-
Max. switching voltage	28.8 V DC					-
Max. switching current	0.1 A					-
Max. switching power	3 W					-
Switching frequency	5 Hz					-
Assured switching distance (Sao)	7 mm				4 mm	-
Assured switch-off distance (Sar)	15 mm	19 mm	15 mm	19 mm	22 mm	-
Minimum switching distance (S0 min)	0.5 mm					-
LED display	No					-
Actuation	front					-
Switching principle	magnetic					-
Series resistor	22 Ohm					-
Technology	Reed					-
Contact form	NO/NO	NO/NC	NO/NO	NO/NC	NO/NC/NO (Kontrollkontakt)	-
Pollution degree	3					-
Protection class	III					-
Coding acc. to EN ISO 14119	Low					-
B10d acc. to EN ISO 13849-1	20000000					-
Type acc. to EN ISO 14119	4					-
Mission time in years	20 a					-
Structure acc. to EN ISO 13849-1	Two-channel					-
Housing design	rectangular					-
Dimensions	50 x 25 x 10 mm			25 x 50 x 10 mm	50 x 25 x 10 mm	-
cannot be mounted flush	yes					-
Detent present	no					-
Housing material	PBT					-
Cable material	-		PVC			-
Housing colour	schwarz					-
Protection class	IP67 DIN EN 60529					-

Attribute	114V62A0D	114270A0D	114V62	114270	114570	ED114V62 ▶
Protection class, connector	IP67 DIN EN 60529 (screwed) - IP65 DIN EN 60529 (plugged)		-			
Operating temperature min.	-25 °C					-
Max. operating temperature	75 °C					-
Min. cable temperature range, moving	5 °C	-	5 °C	-10 °C	-	-
Max. cable temperature range, moving	70 °C	-	70 °C	105 °C	-	-
Min. cable temperature range, fixed installation	25 °C	-	25 °C	-30 °C	-	-
Max. cable temperature range, fixed installation	70 °C	-	70 °C	105 °C	-	-
Shock resistance (Norm)	30g / 11ms					-
Vibration resistance (Norm)	10 - 55Hz					-
Min. storage temperature	-25 °C					-
Max. storage temperature	75 °C					-
Mounting type	screwed					-
Installation	arbitrary					-
Weight	47 g	22 g	47 g	-	-	-
Connector type	M8x1 - 4 polig		-			
Cable length	-		1 m			-
Number of strands	-		4	6	-	-
Wire cross section	-		0.25 mm²	0.14 mm²	-	-
Cable type	LIYY 4x0,25	-	LIYY 4x0,25	-	-	-
Cable colour	grau	-	grau	-	-	-
Certified in accordance with	ETL				-	-
CE label	yes					-
Possible actuators	30427532					-

Attribute	ED114V62A0D	ED114270	ED114270A0D	ED114570
Min. switching voltage			-	
Max. switching voltage			-	
Max. switching current			-	
Max. switching power			-	
Switching frequency			-	
Assured switching distance (Sao)			-	
Assured switch-off distance (Sar)			-	
Minimum switching distance (S0 min)			-	
LED display			-	
Actuation			-	
Switching principle			-	
Series resistor			-	
Technology			-	
Contact form			-	
Pollution degree			-	
Protection class			-	
Coding acc. to EN ISO 14119			-	
B10d acc. to EN ISO 13849-1			-	
Type acc. to EN ISO 14119			-	
Mission time in years			-	
Structure acc. to EN ISO 13849-1			-	
Housing design			-	
Dimensions			-	
cannot be mounted flush			-	
Detent present			-	
Housing material			-	
Cable material			-	
Housing colour			-	
Protection class			-	
Protection class, connector			-	
Operating temperature min.			-	
Max. operating temperature			-	

Attribute	ED114V62A0D	ED114270	ED114270A0D	ED114570
Min. cable temperature range, moving			-	
Max. cable temperature range, moving			-	
Min. cable temperature range, fixed installation			-	
Max. cable temperature range, fixed installation			-	
Shock resistance (Norm)			-	
Vibration resistance (Norm)			-	
Min. storage temperature			-	
Max. storage temperature			-	
Mounting type			-	
Installation			-	
Weight			-	
Connector type			-	
Cable length			-	
Number of strands			-	
Wire cross section			-	
Cable type			-	
Cable colour			-	
Certified in accordance with			-	
CE label			-	
Possible actuators			-	