



Sensor de segurança magnético 114

O sensor de segurança magnético 114 é uma solução simples e compacta, ideal para locais com espaço restrito. Esta série pode ser controlada em várias direções, permitindo instalação variável, como por exemplo em perfis de portas automáticas.

Especificação Técnica

- Design compacto
- Sinal de saída à cabo ou através de conector M8
- Diagnóstico através de controle de contato

Desenho técnico

IMAGE 1/3

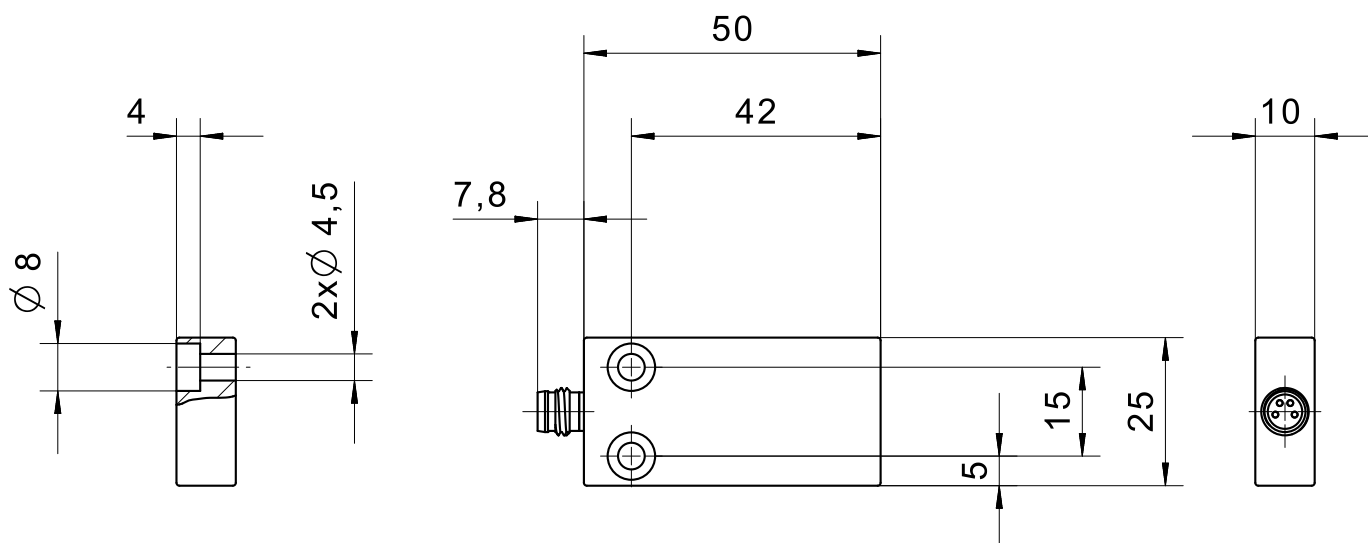
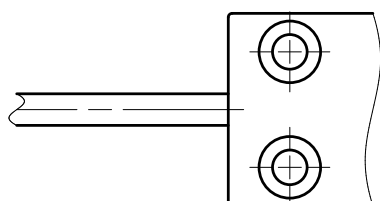


IMAGE 2/3



male M8

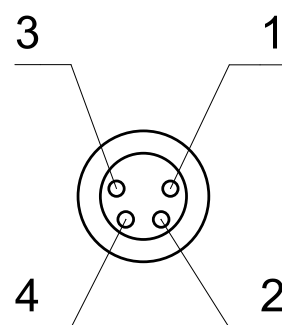
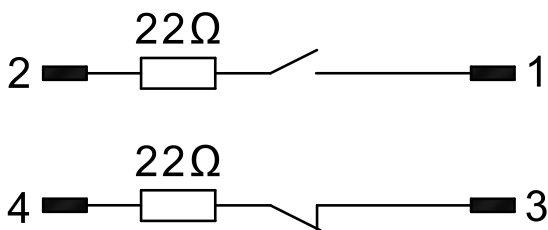
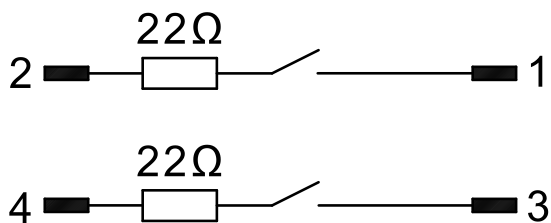


IMAGE 3/3

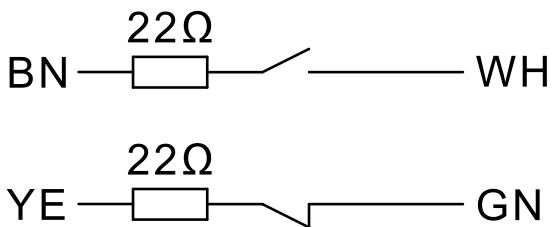
114270A0D



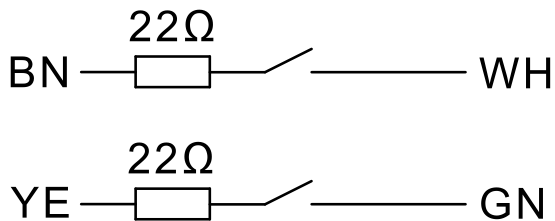
114V62A0D



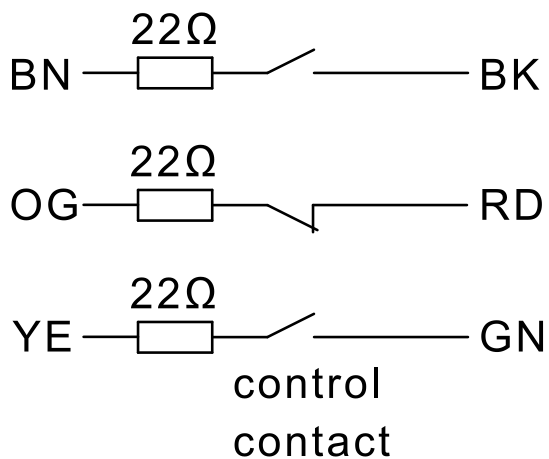
114270



114V62

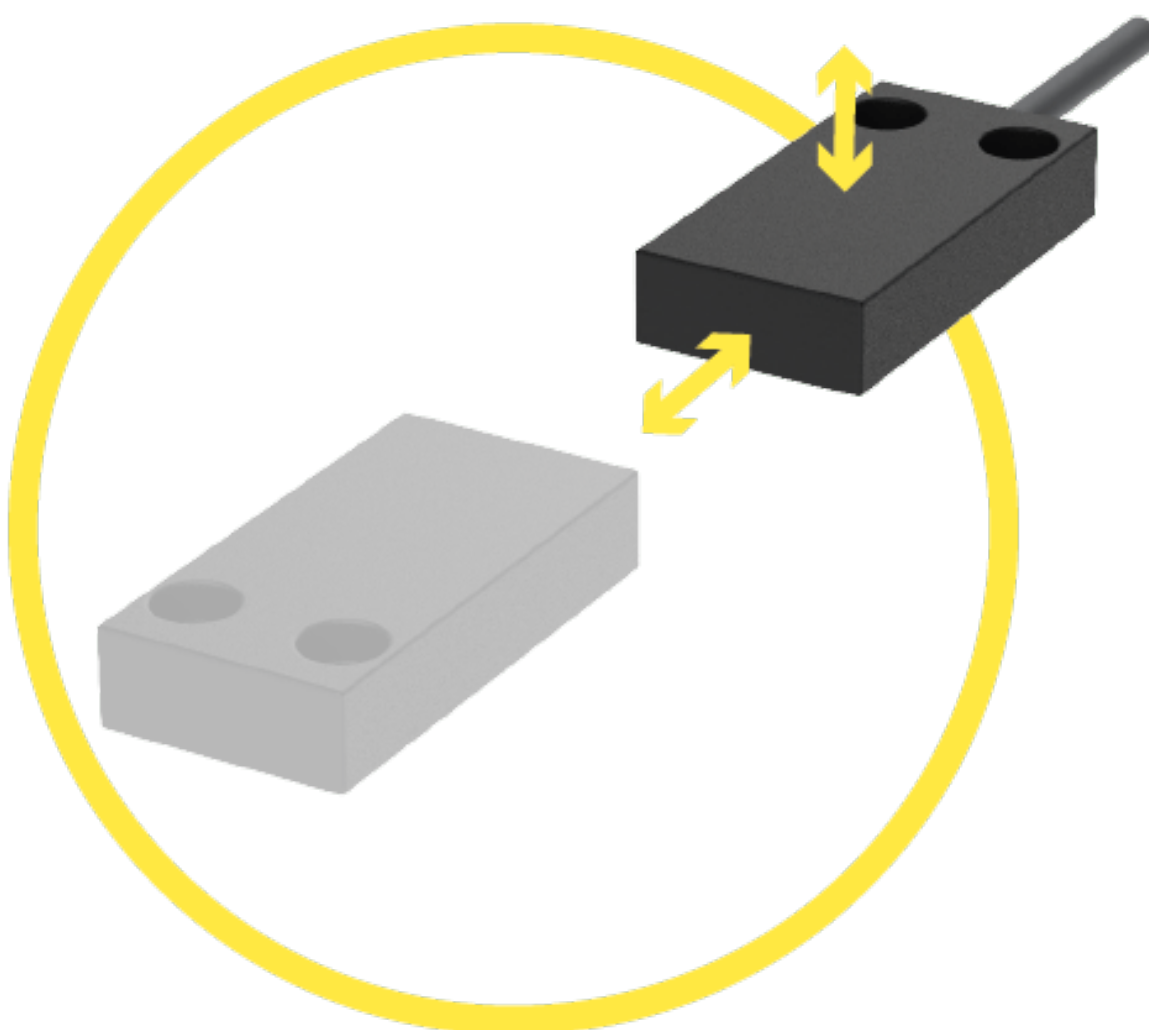


114570



Product options

IMAGE 1/3



Suitable for front and top actuation. Offset depending on magnet system: max. XXX mm vertical and XXX mm horizontal. Front and top actuation. Operating distance (Sao) from 2 to 7 mm. Assured switch-off distance (Sar) from 12 to 22 mm.

IMAGE 2/3

ORDERING KEY

| | 114V62 | 114V62A0D | 114270 |
|--------------------------------------------|--------|-----------|--------|
| Cubic plastic housing | X | X | X |
| M8x1 connector, 4-pin, nickel-plated brass | - | X | - |
| Connection cable 1 m* | X | - | X |
| N.O./N.O. contacts | X | X | - |
| N.O./N.C. contacts | - | - | X |
| Additional N.O. control contact | - | - | - |
| Coded | X | X | X |
| Uncoded | - | - | - |

| | 114270A0D | 114570 |
|--------------------------------------------|-----------|--------|
| Cubic plastic housing | X | X |
| M8x1 connector, 4-pin, nickel-plated brass | X | - |
| Connection cable 1 m* | - | X |
| N.O./N.O. contacts | - | - |
| N.O./N.C. contacts | X | X |
| Additional N.O. control contact | - | X |
| Coded | X | X |
| Uncoded | - | - |

* Other cable lengths, cable materials and connector types on request

IMAGE 3/3

MATCHING ACTUATORS

| Actuators | 114V62 | | | 114V62A0D | | | 114270 | | | 114270A0D | | | 114570 | | |
|--------------------------------|--------------------|-----------------|-----------------|--------------------|-----------------|-----------------|--------------------|-----------------|-----------------|--------------------|-----------------|-----------------|--------------------|-----------------|-----------------|
| | S _{0 min} | S _{ao} | S _{ar} | S _{0 min} | S _{ao} | S _{ar} | S _{0 min} | S _{ao} | S _{ar} | S _{0 min} | S _{ao} | S _{ar} | S _{0 min} | S _{ao} | S _{ar} |
| 304 275 02 ^A | 0.5 | 7 | 15 | 0.5 | 7 | 15 | 0.5 | 7 | 19 | 0.5 | 7 | 19 | 0.5 | 4 | 22 |
| 304 275 02 ^B | 0.5 | 8 | 12 | 0.5 | 8 | 12 | - | - | - | - | - | - | - | - | - |
| 304 275 02 ^C | 0.5 | 8 | 12 | 0.5 | 8 | 12 | 0.5 | 7 | 17 | 0.5 | 7 | 17 | 0.5 | 4 | 20 |
| 304 275 32 ^D | 0.5 | 4 | 13 | 0.5 | 4 | 13 | 0.5 | 2.5 | 14 | 0.5 | 2.5 | 14 | 0.5 | 2 | 14 |

S_{0 min} = minimum switching distance (mm), S_{ao} = operating distance (mm), S_{ar} = assured switch-off distance (mm)

^A Actuation direction: one above the other / parallel, ^B Actuation direction: one above the other / lateral (from connection side), ^C Actuation direction: one above the other / lateral (from opposite connection side), ^D Actuation direction: front

Características do artigo

| Attribute | 114V62A0D | 114270A0D | 114V62 | 114270 | 114570 |
|-------------------------------------|-----------------------------------------------------------|-----------|--------|-----------------|-------------------------------|
| Min. switching voltage | 19.2 V DC | | | | |
| Max. switching voltage | 28.8 V DC | | | | |
| Max. switching current | 0.1 A | | | | |
| Max. switching power | 3 W | | | | |
| Switching frequency | 5 Hz | | | | |
| Assured switching distance (Sao) | 7 mm | | | | 4 mm |
| Assured switch-off distance (Sar) | 15 mm | 19 mm | 15 mm | 19 mm | 22 mm |
| Minimum switching distance (S0 min) | 0.5 mm | | | | |
| LED display | No | | | | |
| Actuation | front | | | | |
| Switching principle | magnetic | | | | |
| Series resistor | 22 Ohm | | | | |
| Technology | Reed | | | | |
| Contact form | NO/NO | NO/NC | NO/NO | NO/NC | NO/NC/NO (Kontrollkontakt) |
| Pollution degree | 3 | | | | |
| Protection class | III | | | | |
| Coding acc. to EN ISO 14119 | Low | | | | |
| B10d acc. to EN ISO 13849-1 | 20000000 | | | | |
| Type acc. to EN ISO 14119 | 4 | | | | |
| Mission time in years | 20 a | | | | |
| Structure acc. to EN ISO 13849-1 | Two-channel | | | | |
| Housing design | rectangular | | | | |
| Dimensions | 50 x 25 x 10 mm | | | 25 x 50 x 10 mm | 50 x 25 x 10 mm |
| cannot be mounted flush | yes | | | | |
| Detent present | no | | | | |
| Housing material | PBT | | | | |
| Cable material | - | | PVC | | |
| Housing colour | schwarz | | | | |
| Protection class | IP67 DIN EN 60529 | | | | |
| Protection class, connector | IP67 DIN EN 60529 (screwed) - IP65 DIN EN 60529 (plugged) | | - | | |

Características do artigo

| Attribute | 114V62A0D | 114270A0D | 114V62 | 114270 | 114570 |
|--------------------------------------------------|----------------|-----------|-------------|----------|--------|
| Operating temperature min. | -25 °C | | | | |
| Max. operating temperature | 75 °C | | | | |
| Min. cable temperature range, moving | 5 °C | - | 5 °C | -10 °C | |
| Max. cable temperature range, moving | 70 °C | - | 70 °C | 105 °C | |
| Min. cable temperature range, fixed installation | 25 °C | - | 25 °C | -30 °C | |
| Max. cable temperature range, fixed installation | 70 °C | - | 70 °C | 105 °C | |
| Shock resistance (Norm) | 30g / 11ms | | | | |
| Vibration resistance (Norm) | 10 - 55Hz | | | | |
| Min. storage temperature | -25 °C | | | | |
| Max. storage temperature | 75 °C | | | | |
| Mounting type | screwed | | | | |
| Installation | arbitrary | | | | |
| Weight | 47 g | 22 g | 47 g | - | |
| Connector type | M8x1 - 4 polig | | - | | |
| Cable length | - | | 1 m | | |
| Number of strands | - | | 4 | 6 | |
| Wire cross section | - | | 0.25 mm² | 0.14 mm² | |
| Cable type | LIYY 4x0,25 | - | LIYY 4x0,25 | - | |
| Cable colour | grau | - | grau | - | |
| Certified in accordance with | ETL | | | | - |
| CE label | yes | | | | |
| Possible actuators | 30427532 | | | | |