



Conector Circular M8 4-pinos

- Elevada classe de proteção e de temperatura de trabalho para atender às demandas de ambientes industriais adversos
- Conector circular para montagens customizadas

Desenho técnico

IMAGE 1/6

351152

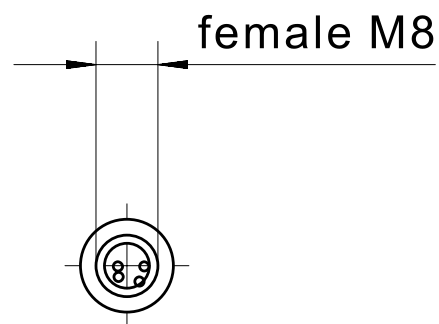
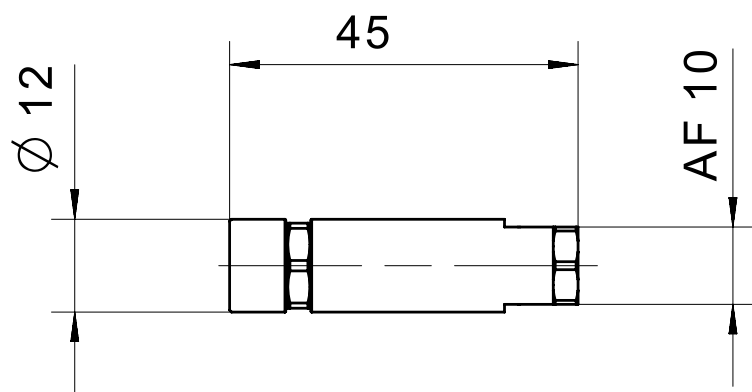


IMAGE 2/6

female M8



IMAGE 3/6

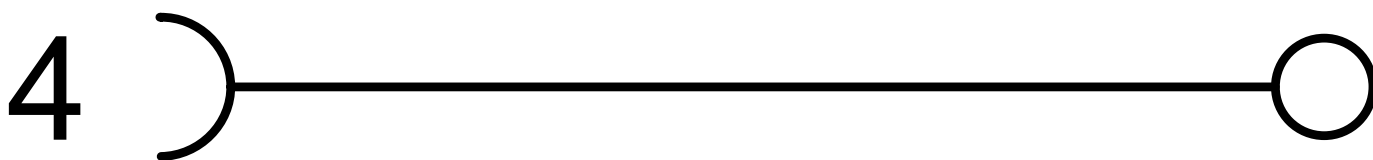
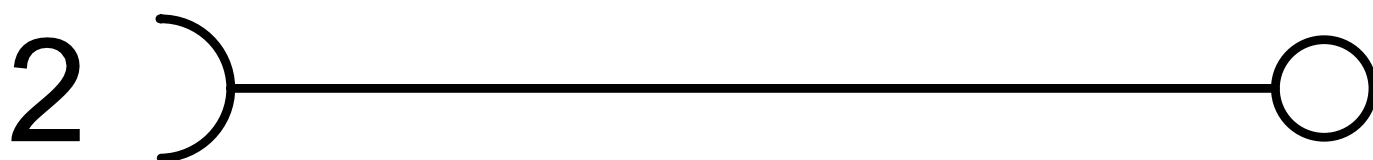


IMAGE 4/6

351153



IMAGE 5/6

male M8

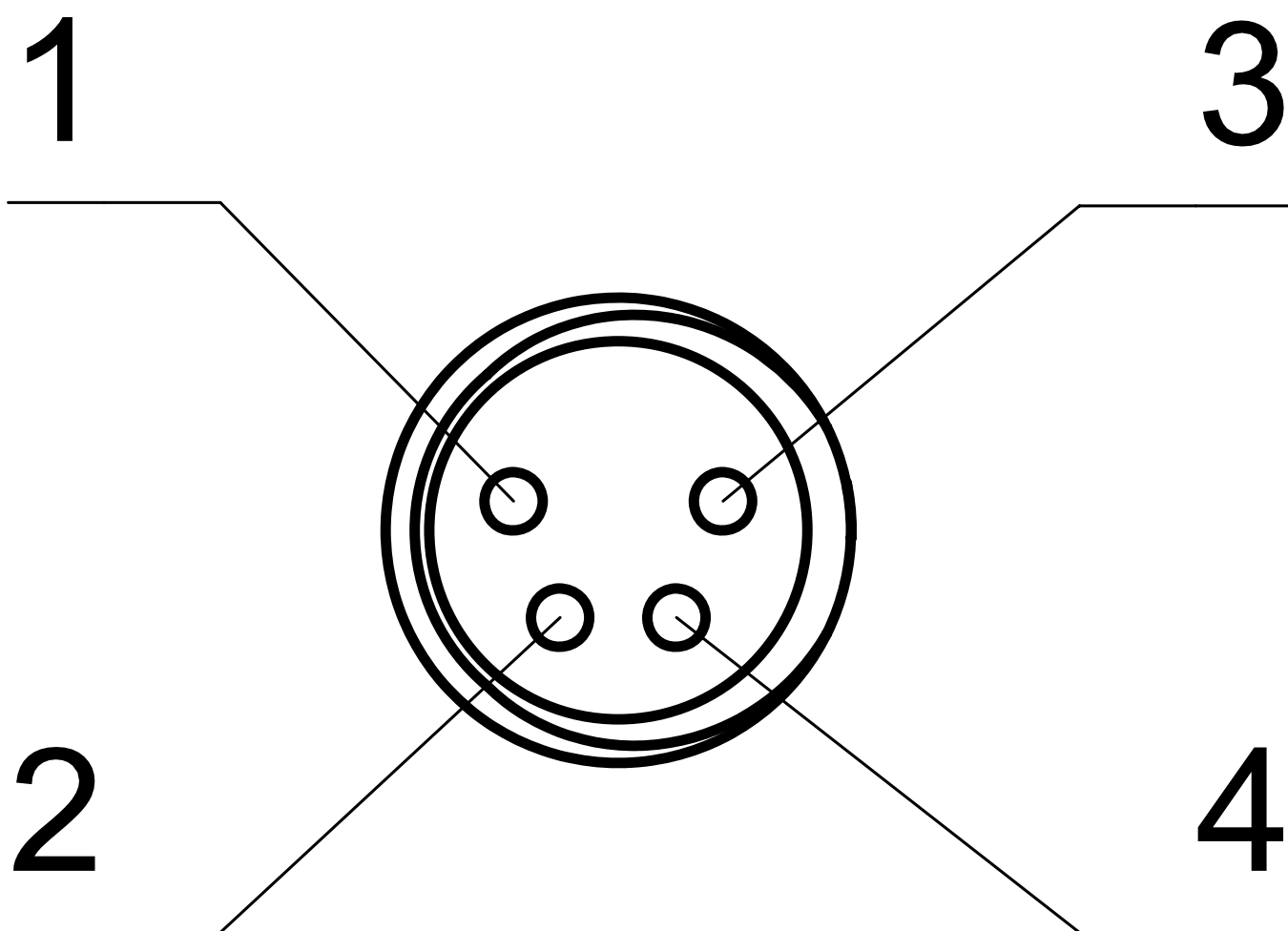


IMAGE 6/6



Product options

IMAGE 1/1

ORDERING KEY

351		Circular connector, 4-pin
	152	Coupling socket M8
	153	Coupling connector M8
	150	Coupling socket M12
	151	Coupling connector M12
		more coupling sockets / connectors on request

Características do artigo

Attribute	351152	351153
Pollution degree	3	
Max. switching current per contact	4 A	
Rated impulse withstand voltage (Uimp)	800 V	
Operating voltage max.	240 V DC	
Operating voltage max.	240 V AC	
Nut material	CuZi nickel-plated	
Overmould material	PA	
Operating temperature min.	-40 °C	
Max. operating temperature	85 °C	
Min. storage temperature	-40 °C	
Max. storage temperature	85 °C	
Torque for nuts	0,5 N m	
Connector type	M8 socket, straight	M8 connector, straight
Cable diameter	3,5 - 5,5 mm	
Number of pins	4	
Connection type	Screw connection	
Min. connection cross section	0.14 mm²	
Max. connection cross section	0.5 mm²	