



Botão giratório 175D

O botão giratório modelo 175D é ideal para aplicação em joysticks e painéis de controle em equipamentos móbil.

Os botões giratórios com sinal de saída analógico da elobau podem ser montados nas alavancas de controle 361G / 362G e 341G / 342G, para controle de uma infinidade de funções.

Especificação Técnica

- LED de iluminação opcional disponível em várias cores
- Ergonômico
- Alta confiabilidade devido à tecnologia de sensores de efeito Hall
- Classe de proteção IP67
- Ângulo de atuação $\pm 30^\circ$ (sem detente) ou $\pm 20^\circ$ (com detente)
- Sinal de saída analógico, analógico semi redundante, analógico redundante ou digital

Desenho técnico

IMAGE 1/3

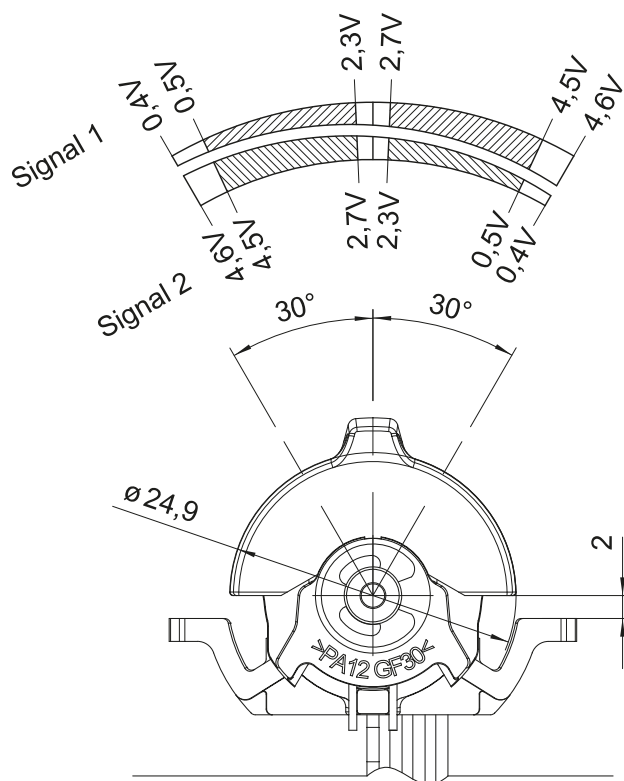
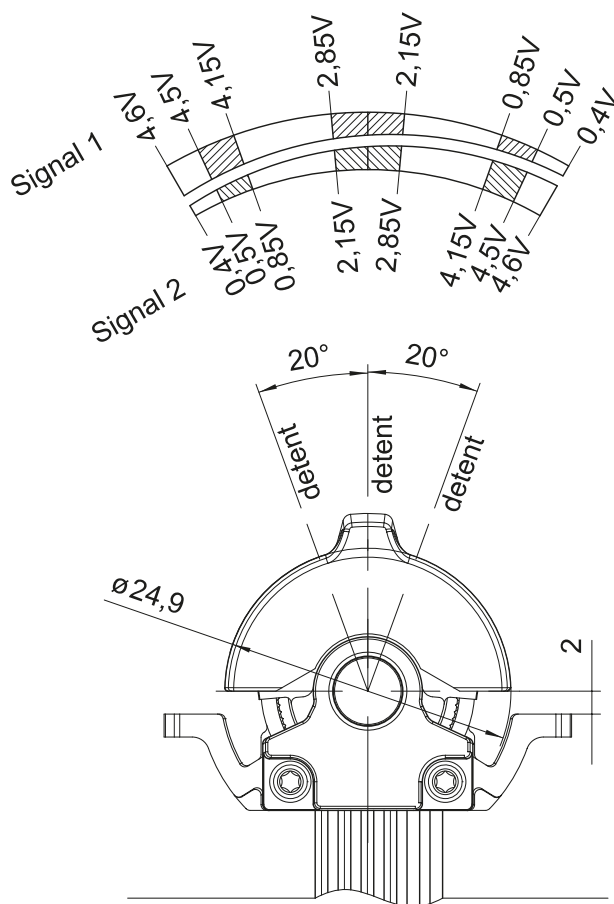
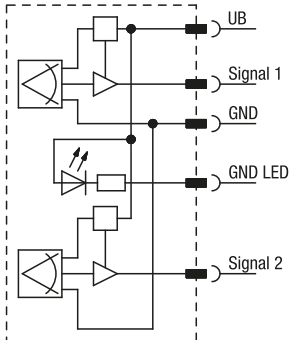


IMAGE 2/3

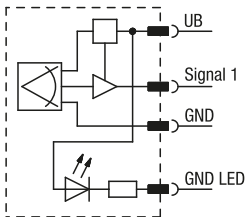
Standard

Analogue semi-redundant

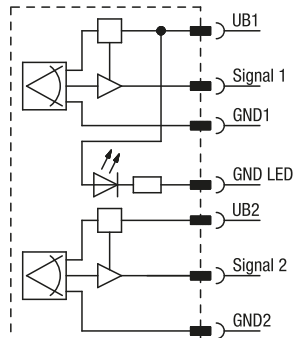


Optional

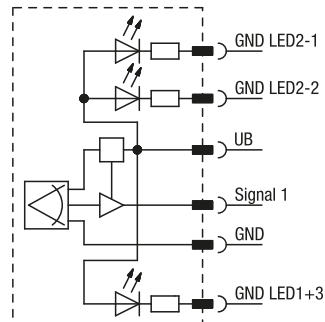
Analogue



Analogue redundant



Analogue multi-colour



Switching output

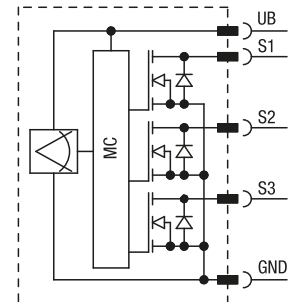
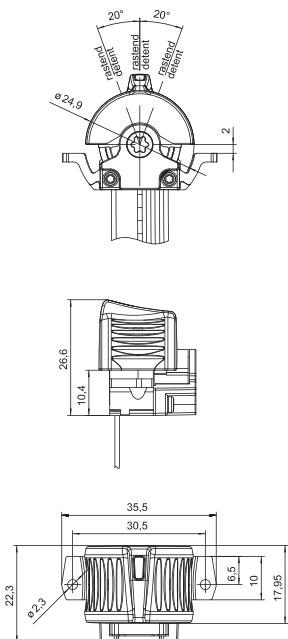


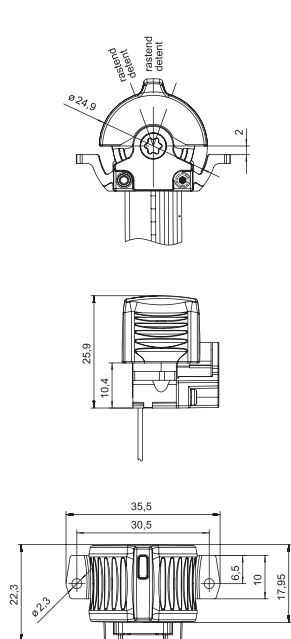
IMAGE 3/3

Standard

Actuator type A

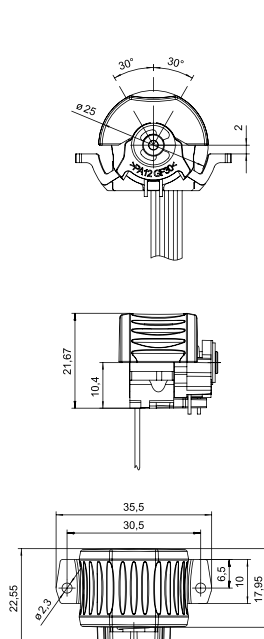


Actuator type B

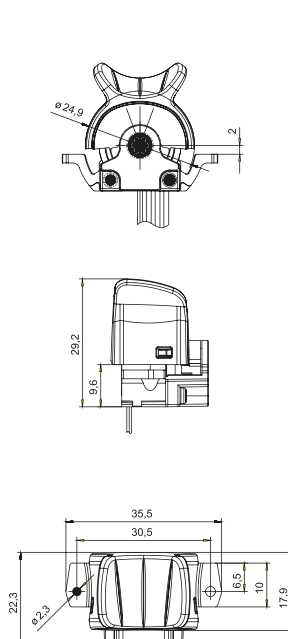


Optional

Actuator type C



Actuator type D



Product options

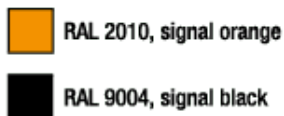
IMAGE 1/1

Illumination

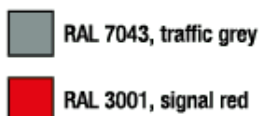
Illumination is generally provided by 3 LEDs. An optional multi-colour LED (red-green) is available for the centre position, which maintains its illumination colour until a signal position change takes place. Optionally also available without illumination.



Actuator colors Standard



Actuator colors Optional



Illumination colours LED



Illumination colours LED Optional



Red/green for multi-colour LEDs

Características do artigo

| Attribute | 175DD... | 175DR... | 175DT... |
|---|---|-----------|-----------|
| Max. switching voltage | 24 V DC | - | - |
| Max. switching current | 0.1 A | - | - |
| Polarity reversal protection | no | | |
| Output signal min. | - | 0.5 V DC | |
| Output signal max. | - | 4.5 V DC | |
| Output signal | open drain | analogue | |
| Output signal - centre position/zero position | - | 2.5 V | |
| Output polarity | - | opposite | |
| Operating voltage min. | 4.5 V DC | | |
| Operating voltage max. | 5.5 V DC | | |
| Current consumption | per Signal max. 15 mA | | |
| Load resistance min. | - | 20000 Ohm | |
| Short-circuit resistance to GND | yes | | |
| Short-circuit resistance to supply | yes | | |
| Technology | Hall | | |
| Deflection | ± 30 ° | ± 20 ° | ± 30 ° |
| Actuation type | no detent | detent | no detent |
| Service life, mechanical (Cycles) | 2000000 | | |
| Protection class, electronic | IP67 DIN EN 60529 | | |
| Operating temperature min. | -25 °C | | |
| Max. operating temperature | 85 °C | | |
| Min. storage temperature | -40 °C | | |
| Max. storage temperature | 85 °C | | |
| Shock resistance (Norm) | Frequency 50 Hz - 100Hz - 50 Hz, Acceleration 5 g, Amplitude 15 mm peak | | |
| Installation | from below | | |
| Cable length | 0.75 m | | |