



## Botão giratório 175D

O botão giratório modelo 175D é ideal para aplicação em joysticks e painéis de controle em equipamentos móbil.

Os botões giratórios com sinal de saída analógico da elobau podem ser montados nas alavancas de controle 361G / 362G e 341G / 342G, para controle de uma infinidade de funções.

### Especificação Técnica

- LED de iluminação opcional disponível em várias cores
- Ergonômico
- Alta confiabilidade devido à tecnologia de sensores de efeito Hall
- Classe de proteção IP67
- Ângulo de atuação  $\pm 30^\circ$  (sem detente) ou  $\pm 20^\circ$  (com detente)
- Sinal de saída analógico, analógico semi redundante, analógico redundante ou digital

Desenho técnico

IMAGE 1/3

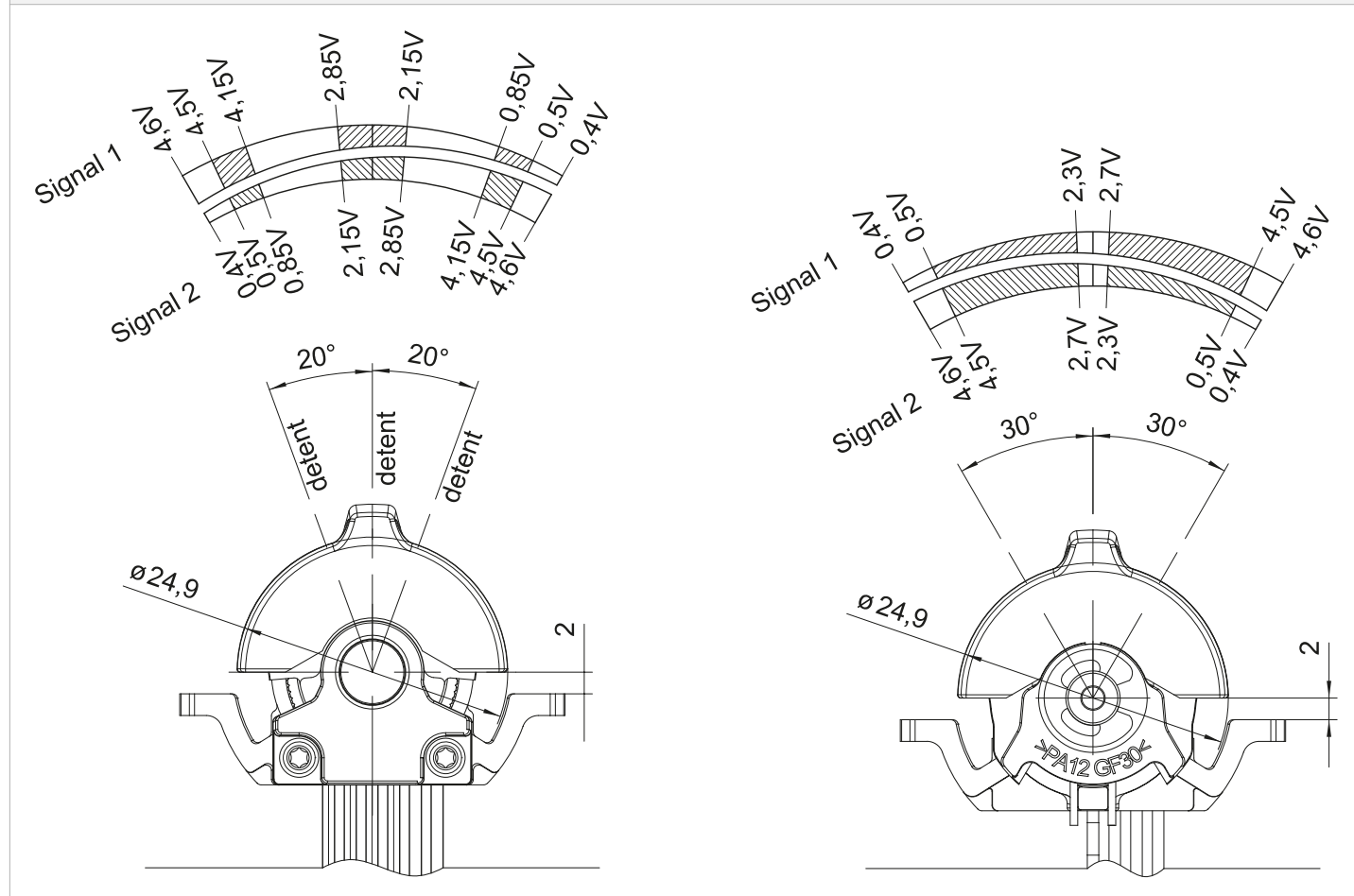
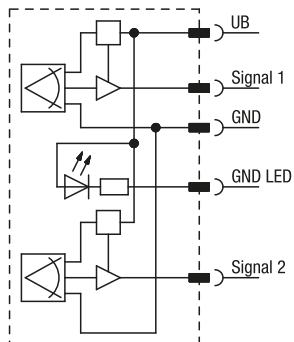


IMAGE 2/3

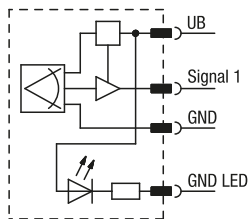
## Standard

### Analogue semi-redundant

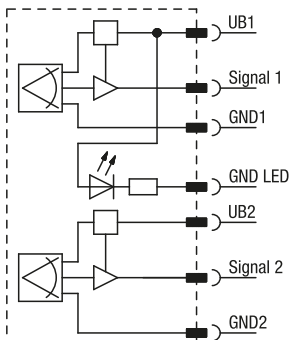


## Optional

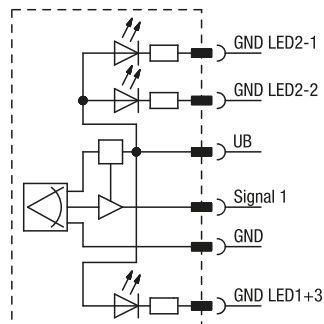
### Analogue



### Analogue redundant



### Analogue multi-colour



### Switching output

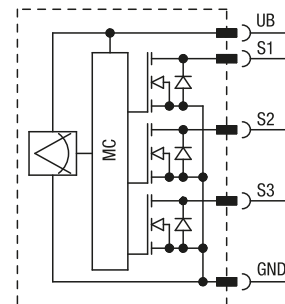
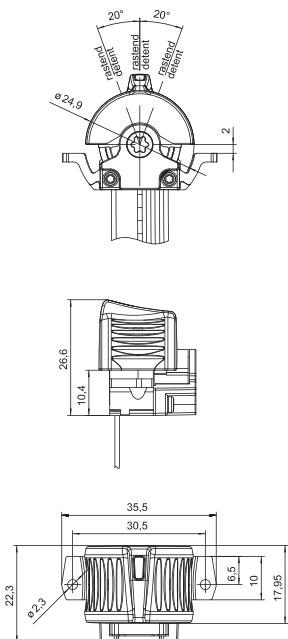


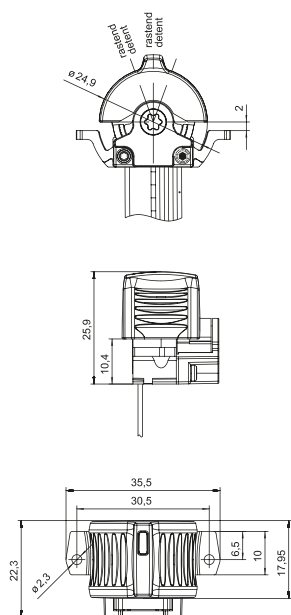
IMAGE 3/3

**Standard**

**Actuator type A**

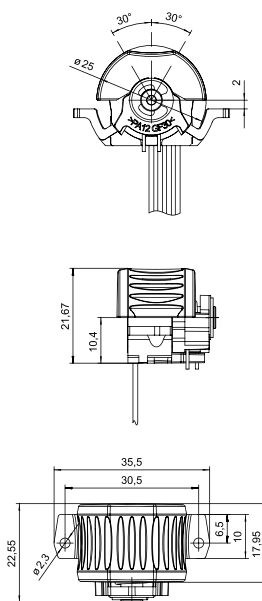


**Actuator type B**

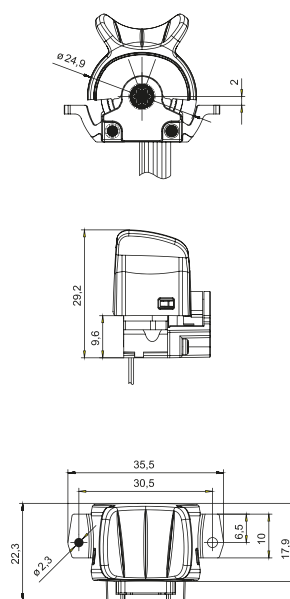


**Optional**

**Actuator type C**



**Actuator type D**



## Product options

IMAGE 1/1

### Illumination

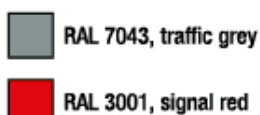
Illumination is generally provided by 3 LEDs. An optional multi-colour LED (red-green) is available for the centre position, which maintains its illumination colour until a signal position change takes place. Optionally also available without illumination.



#### Actuator colors Standard



#### Actuator colors Optional



#### Illumination colours LED



#### Illumination colours LED Optional



Red/green for multi-colour LEDs

## Características do artigo

Attribute	175DD...	175DR...	175DT...
Max. switching voltage	24 V DC	-	-
Max. switching current	0.1 A	-	-
Polarity reversal protection	no		
Output signal min.	-	0.5 V DC	
Output signal max.	-	4.5 V DC	
Output signal	open drain	analogue	
Output signal - centre position/zero position	-	2.5 V	
Output polarity	-	opposite	
Operating voltage min.	4.5 V DC		
Operating voltage max.	5.5 V DC		
Current consumption	per Signal max. 15 mA		
Load resistance min.	-	20000 Ohm	
Short-circuit resistance to GND	yes		
Short-circuit resistance to supply	yes		
Technology	Hall		
Deflection	± 30 °	± 20 °	± 30 °
Actuation type	no detent	detent	no detent
Service life, mechanical (Cycles)	2000000		
Protection class, electronic	IP67 DIN EN 60529		
Operating temperature min.	-25 °C		
Max. operating temperature	85 °C		
Min. storage temperature	-40 °C		
Max. storage temperature	85 °C		
Shock resistance (Norm)	Frequency 50 Hz - 100Hz - 50 Hz, Acceleration 5 g, Amplitude 15 mm peak		
Installation	from below		
Cable length	0.75 m		