



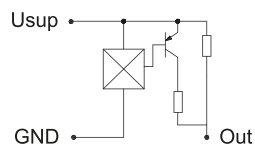
## Botão de acionamento 145 NT

O botão de acionamento modelo 145NT possui rosca de fixação padrão M12. Devido à seu design compacto é ideal para aplicação em alavancas de joysticks e consoles de controle em equipamentos móbil e industriais.

### Especificação Técnica

- Design compacto
- Alta durabilidade, desenvolvido para trabalhar > 4 milhões de ciclos de operação
- Classe de proteção IP67
- Opção de iluminação de funcionamento e operação noturna
- Resistente à choques e vibrações de acordo com a norma DIN IEC 68 Parte 2
- Opção de circuito elétrico NAMUR

## IMAGE 1/1



## Product options

IMAGE 1/2

### Actuator colors



RAL 5005



RAL 9004



RAL 6024



RAL 2003

### Actuator colors Optional



RAL 3020



RAL 8001



RAL 7015



RAL 1023



RAL 7042

### Illumination colours LED



Green



White

### Illumination colours LED Optional



Red



Blue



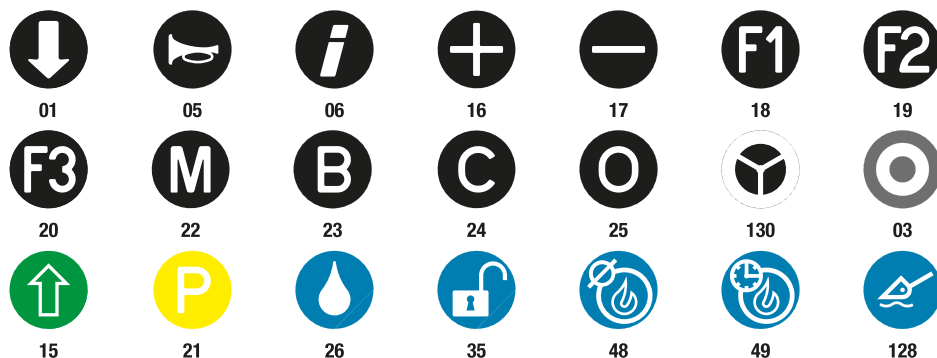
Yellow

Additional versions are available on request. The push button caps can optionally be printed with symbols. (symbol Ø max. 10 mm).

## IMAGE 2/2

### Optional icons for push button 145 NT

Icon colour: white translucent



Icon colour: red translucent



Icon colour: black



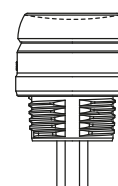
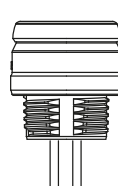
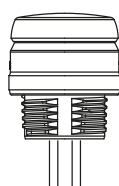
Additional symbols in accordance with DIN ISO 7000:2008-12 are available on request.

### Optional: 2K nano push button

Convex push button

Flat push button

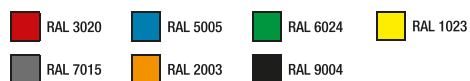
Concave push button



### Optional icon for 2K push button



### Optional actuator colours



## Características do artigo

Attribute	145NTG...	145NTH...
Max. switching voltage	30 V DC	-
Max. switching current	0.3 A	-
Max. switching power	3 W	
Max. switching power	3 VA	5 VA
Contact form	NO	-
Series resistor	-	85 Ohm
Service life, mechanical (Cycles)	2000000	
Protection class, electronic	IP67 DIN EN 60529	
Operating temperature min.	-40 °C	
Max. operating temperature	85 °C	
Min. storage temperature	-40 °C	
Max. storage temperature	85 °C	
Installation	from above	
Mounting type	screwed	
Thread	M12	
Cable length	0.5 m	