



Botão de acionamento 145...AB

O botão de acionamento 145...AB com conector Superseal foi desenvolvido para aplicações severas, onde o componente é exposto à condições ambientais adversas. O botão M30 é ideal para o controle de diversas funções hidráulicas em equipamentos móbil. Devido à tecnologia de sensores magnéticos sem contato mecânico (reed switch), este produto atinge classe de proteção IP67, oferecendo elevada resistência à sujeira, poeira, água, entre outros.

Especificação Técnicas

- Alta durabilidade devido à tecnologia de sensores magnéticos sem contato mecânico
- Aplicação em circuitos elétricos de baixa corrente
- Classe de proteção IP67
- Disponível em várias opções de cores e símbolos
- Conector Deutsch

Desenho técnico

IMAGE 1/2

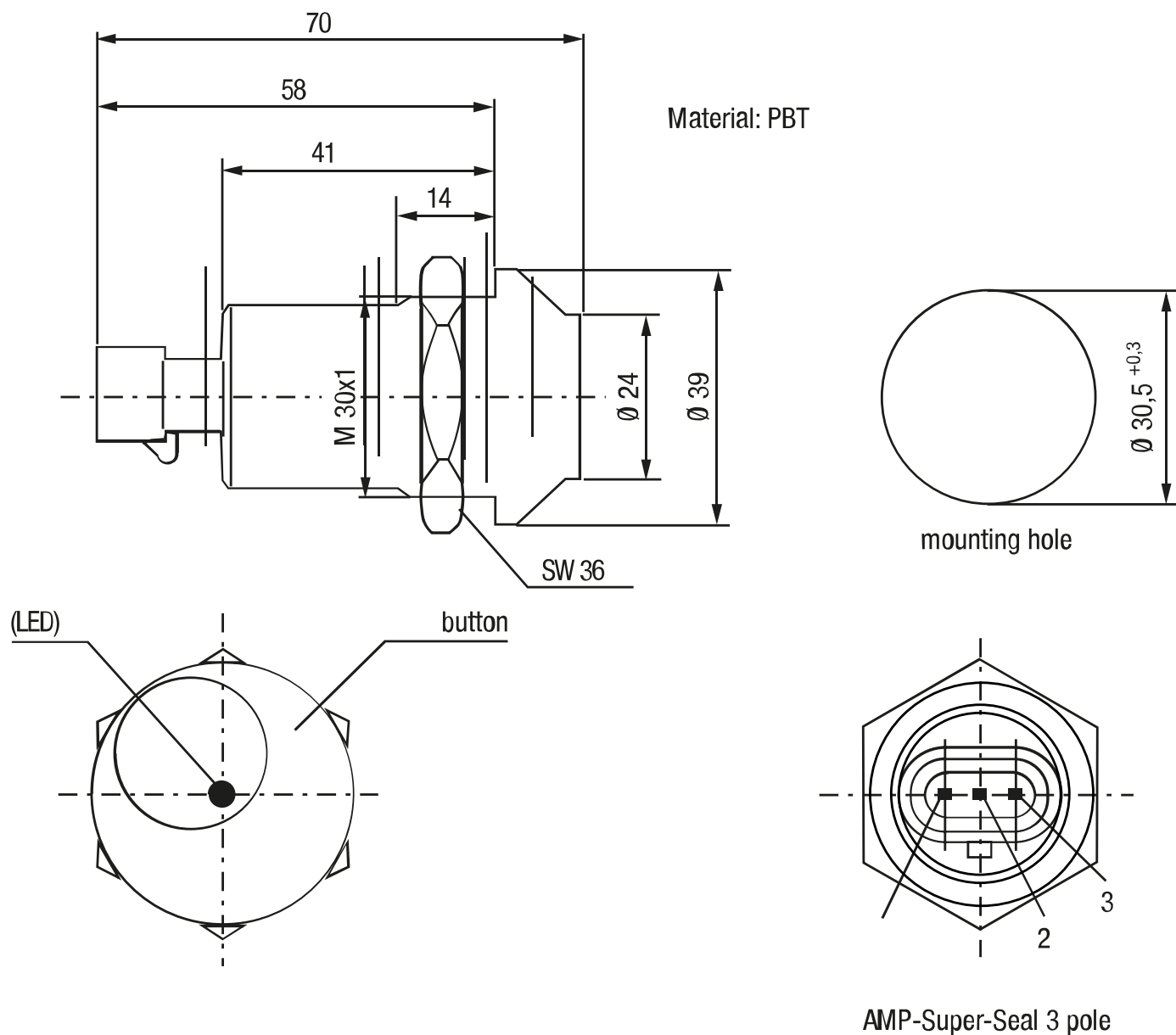
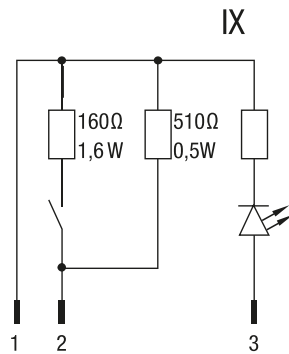
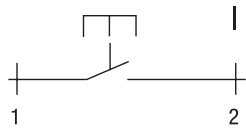
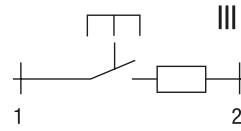


IMAGE 2/2

Standard



Optional

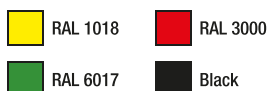


Other circuitry available on request.

Product options

IMAGE 1/2

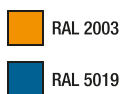
Actuator colors Standard



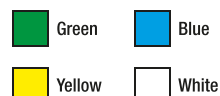
Illumination colours LED Standard



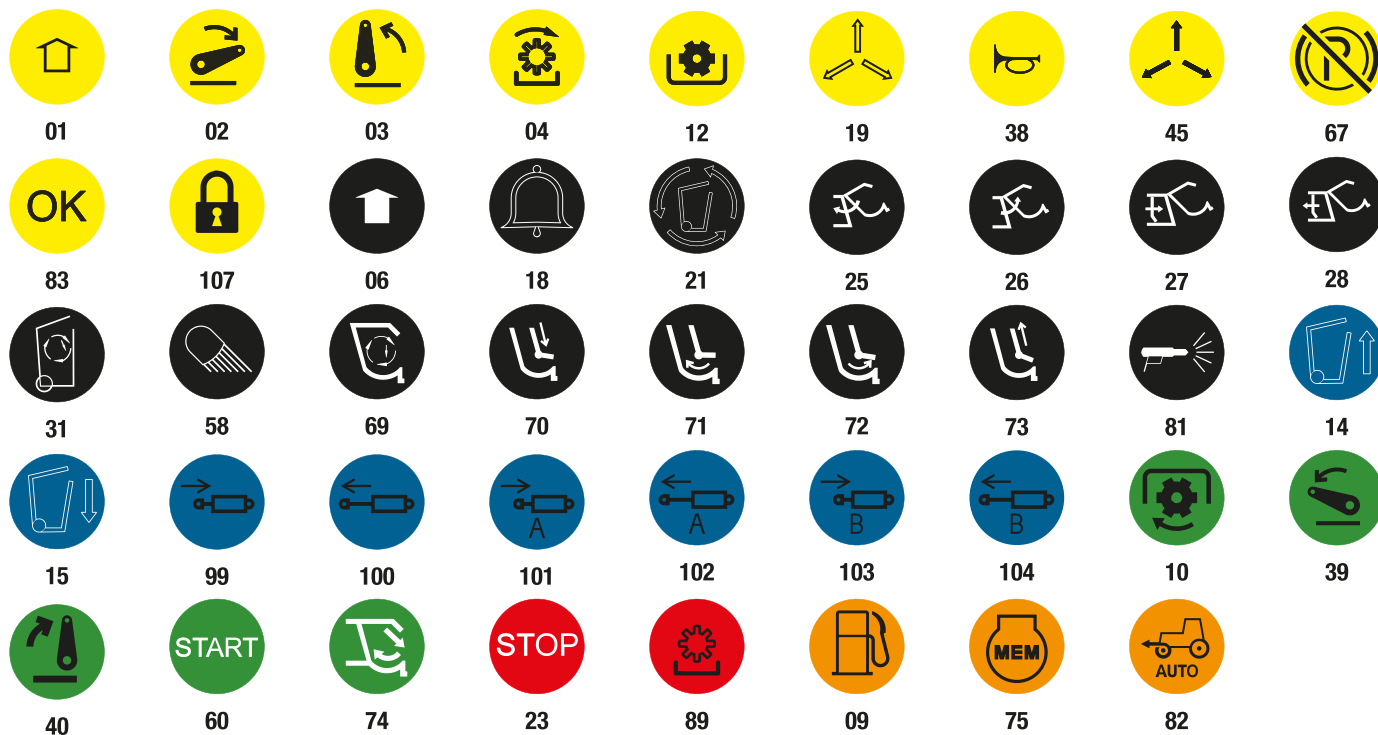
Actuator colors Optional



Illumination colours LED Optional



Optional icons for push button 145 ... AB



Additional icons according to DIN ISO 7000:2008-12 available on request.

IMAGE 2/2

ORDERING KEY

145											Push buttons
											Circuit diagram
	0	0	0	A	B						Circuit I, N.O., with AMP Superseal connector
	1	0	5	A	B						Circuit IX, LED colour red, Namur with AMP Superseal connector
	0	0	0	A	E						Circuit I, N.O., with Deutsch connector
	1	0	5	A	E						Circuit IX, LED colour red, Namur with Deutsch connector
											Colour
						6	0				Black
						2	1				Yellow
						1	0				Green
						4	0				Red

SW36 nut included with delivery

Características do artigo

Attribute	145...AB.
Max. switching voltage	36 V DC
Max. switching power	10 W
Max. switching power	10 VA
Service life, mechanical (Cycles)	2000000
Protection class, electronic	IP67 DIN EN 60529
Operating temperature min.	-20 °C
Max. operating temperature	100 °C
Min. storage temperature	-40 °C
Max. storage temperature	100 °C
Installation	from above
Mounting type	screwed
Connector type	AMP-Super-Seal