



## Immersion float switch

The elobau immersion float switch, based on robust and reliable reed technology, is typically used for limit level monitoring in large tanks. Areas of application include monitoring the empty or overflow of liquids such as water, oil or other chemicals. The submersible float switch is convincing due to its robust design and maximum flexibility: the switching point height can be variably adjusted using the optionally available mounting modules with cable gland and the switching function can be reversed by turning the float.

### Product characteristics

- Immersion float switch
- Level measurement on reed contact basis
- Mounting on cable via cable gland and optional mounting module
- Materials: Stainless steel float switch with PUR cable and PVC float switch with PVC cable
- Switching voltage max. 48 V
- Contact type: normally open contact
- Temperature range: -40°C to +90°C (stainless steel), -10°C to +65°C (PVC)
- Protection class: IP68 DIN EN 60529

Desenho técnico

IMAGE 1/3: 2ES1\*

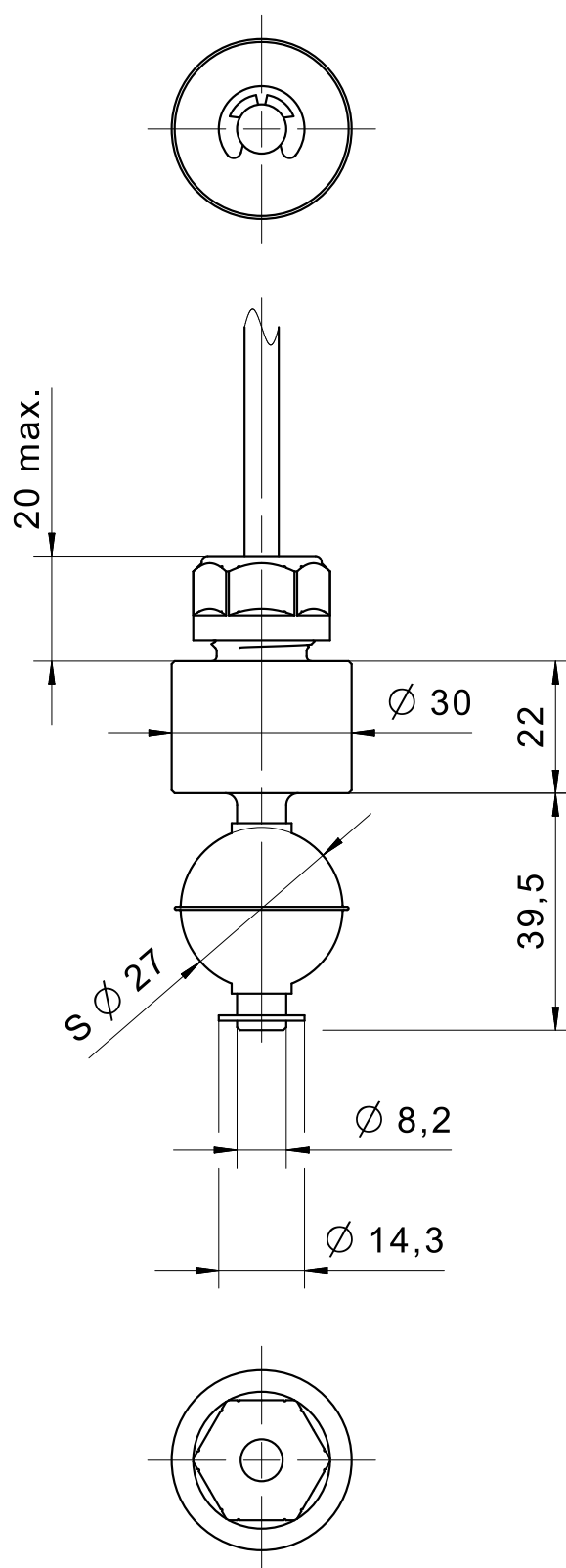


IMAGE 2/3

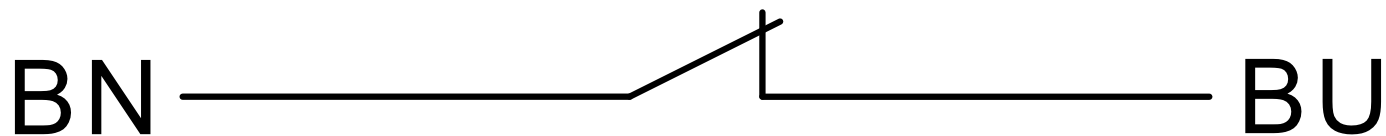
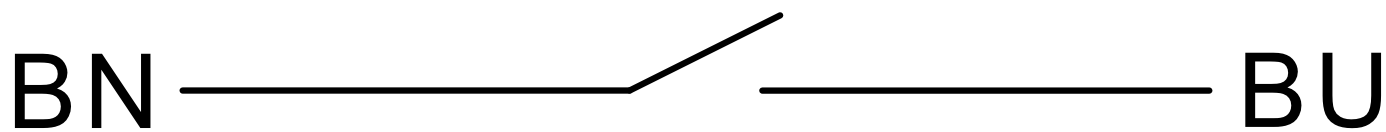


IMAGE 3/3: 2ES0\*



## Características do artigo

| Attribute                                         | 2ES0001             | 2ES0003 | 2ES1001   | 2ES1002 | ED2ES0001 | ED2ES0003 ▶ |
|---------------------------------------------------|---------------------|---------|-----------|---------|-----------|-------------|
| Min. switching voltage                            | 0 V DC              |         |           |         | -         |             |
| Max. switching voltage                            | 48 V DC             |         |           |         | -         |             |
| Min. switching voltage                            | 0 V AC              |         |           |         | -         |             |
| Max. switching voltage                            | 48 V AC             |         |           |         | -         |             |
| Min. switching current                            | 0 A                 |         |           |         | -         |             |
| Max. switching current                            | 0.5 A               |         |           |         | -         |             |
| Min. switching power                              | 0 W                 |         |           |         | -         |             |
| Max. switching power                              | 50 W                |         |           |         | -         |             |
| Contact form                                      | 1A or 1B            |         |           |         | -         |             |
| Output signal                                     | digital             |         |           |         | -         |             |
| Technology                                        | Reed                |         |           |         | -         |             |
| Change of switching function by turning the float | yes                 |         |           |         | -         |             |
| Switching point function                          | See data sheet      |         |           |         | -         |             |
| Recommended minimum density of the medium         | 0.8 g/cm³           |         | 0.7 g/cm³ |         | -         |             |
| Float diameter                                    | 25 mm               |         | 29 mm     |         | -         |             |
| Version                                           | Straight            |         |           |         | -         |             |
| Diameter                                          | 40 mm               |         | 30 mm     |         | -         |             |
| Housing material                                  | PVC                 |         | VA        |         | -         |             |
| Float material                                    | PVC                 |         | VA        |         | -         |             |
| Riser material                                    | PVC                 |         | VA        |         | -         |             |
| Cable material                                    | PVC                 |         | PUR       |         | -         |             |
| Protection class inside container                 | IP68 DIN EN 60529   |         |           |         | -         |             |
| Operating temperature min.                        | -10 °C              |         | -40 °C    |         | -         |             |
| Max. operating temperature                        | 65 °C               |         | 90 °C     |         | -         |             |
| Pressure resistance                               | 3 bar               |         |           |         | -         |             |
| Installation                                      | from above          |         |           |         | -         |             |
| Mounting type                                     | -                   |         |           |         | -         |             |
| Mounting modules                                  | 35020501 , 35020502 |         |           |         | -         |             |
| Riser diameter                                    | 8 mm                |         |           |         | -         |             |
| Riser length                                      | 38 mm               |         | 40 mm     |         | -         |             |

| Attribute            | 2ES0001  | 2ES0003 | 2ES1001  | 2ES1002 | ED2ES0001 | ED2ES0003 ▶ |
|----------------------|----------|---------|----------|---------|-----------|-------------|
| Installation opening | min.40mm |         | min.30mm |         | -         |             |
| Connector type       | ohne     |         |          |         | -         |             |
| Cable length         | 1 m      | 5 m     | 1 m      | 5 m     | -         |             |

| Attribute                                         | ED2ES1001 | ED2ES1002 |
|---------------------------------------------------|-----------|-----------|
| Min. switching voltage                            | -         | -         |
| Max. switching voltage                            | -         | -         |
| Min. switching voltage                            | -         | -         |
| Max. switching voltage                            | -         | -         |
| Min. switching current                            | -         | -         |
| Max. switching current                            | -         | -         |
| Min. switching power                              | -         | -         |
| Max. switching power                              | -         | -         |
| Contact form                                      | -         | -         |
| Output signal                                     | -         | -         |
| Technology                                        | -         | -         |
| Change of switching function by turning the float | -         | -         |
| Switching point function                          | -         | -         |
| Recommended minimum density of the medium         | -         | -         |
| Float diameter                                    | -         | -         |
| Version                                           | -         | -         |
| Diameter                                          | -         | -         |
| Housing material                                  | -         | -         |
| Float material                                    | -         | -         |
| Riser material                                    | -         | -         |
| Cable material                                    | -         | -         |
| Protection class inside container                 | -         | -         |
| Operating temperature min.                        | -         | -         |
| Max. operating temperature                        | -         | -         |
| Pressure resistance                               | -         | -         |
| Installation                                      | -         | -         |
| Mounting type                                     | -         | -         |
| Mounting modules                                  | -         | -         |
| Riser diameter                                    | -         | -         |
| Riser length                                      | -         | -         |
| Installation opening                              | -         | -         |
| Connector type                                    | -         | -         |
| Cable length                                      | -         | -         |