



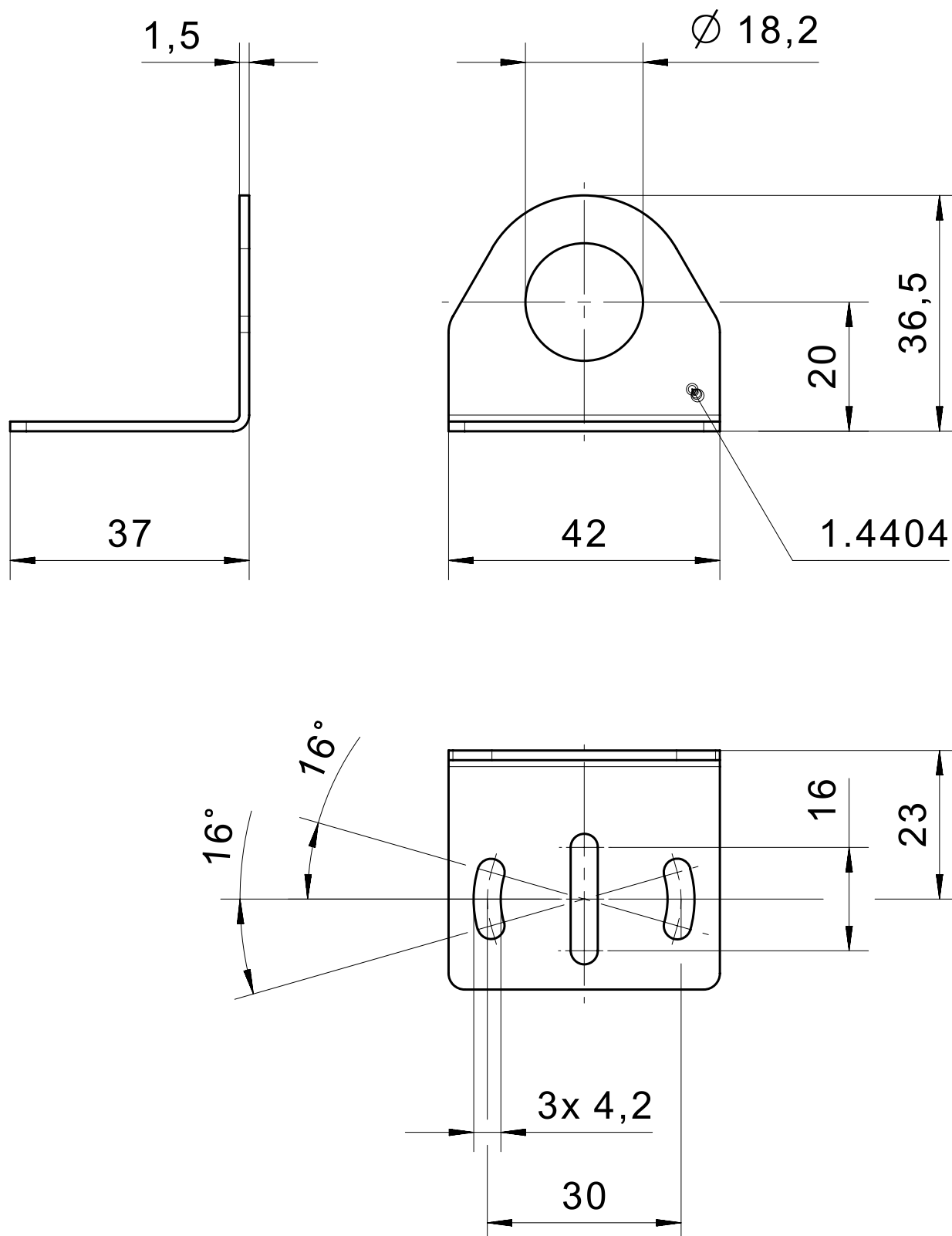
Équerre de fixation pour détecteur

Caractéristiques du produit

- Adaptée aux capteurs de forme M18 et M30
- Différents matériaux et variantes adaptés à diverses conditions d'installation

Dessin technique

PHOTO 1/4



Technical drawing of a mechanical part, showing a side view and a top view. The side view (left) shows a thickness of 1,5. The top view (right) shows a rectangular base with a semi-circular top. Dimensions include a width of 42, a semi-circular top with a radius of 18,2 (indicated as $\varnothing 18,2$), and a total height of 70,5. The base has three vertical slots, each 3,2 wide, with a total width of 30. The distance from the bottom edge to the center of the slots is 14, and the distance from the center of the slots to the top edge is 16. The material specification 1.4404 is indicated.

PHOTO 3/4

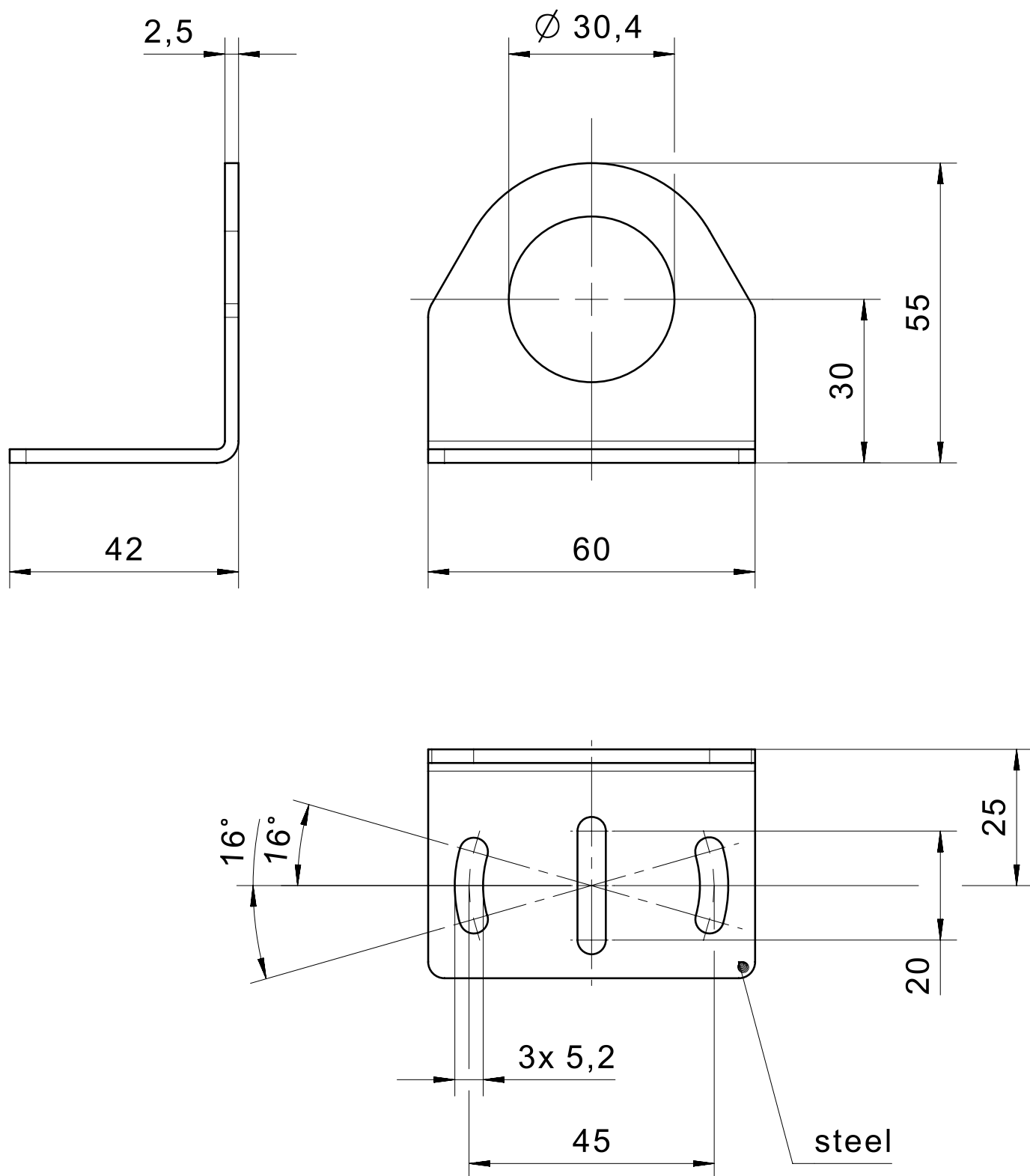
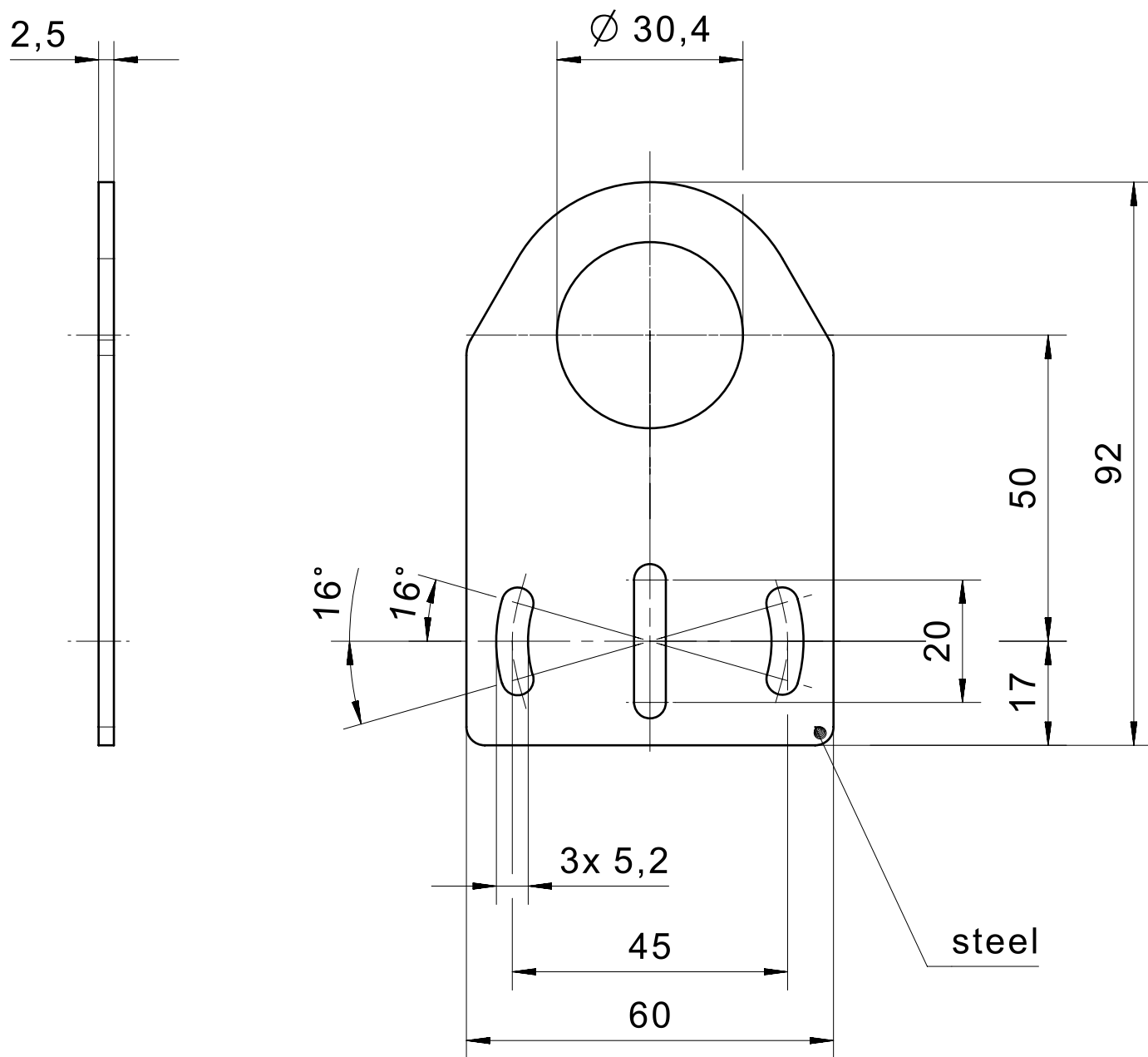


PHOTO 4/4



Options de produit

PHOTO 1/1

ORDERING KEY

M18VA-01	Mounting aid	M18 sensors (DIN 1.4404)
M18VA-090-01	Mounting brackets	M18 sensors (DIN 1.4404)
M30-01	Mounting aid	M30 sensors
M30-090-01	Mounting brackets	M30 sensors

Caractéristiques des articles

Attributs	M18VA-01	M18VA-090-01	M30-01	M30-090-01
Matériau	Inox 1.4404		Métal	
Dimensions	70.5x42	36.5x42x37	92x60	55x60x42
Version	Forme M18		Forme M30	