



## Supports 35000

Les détecteurs de sécurité et les aimants associés ne doivent pas être fixés directement sur un matériau ferritique. C'est pourquoi nous recommandons ici l'utilisation de nos supports.

### Caractéristiques du produit

- Permet de monter des détecteurs de sécurité et des actionneurs directement sur un matériau ferritique

### Dessin technique

PHOTO 1/8

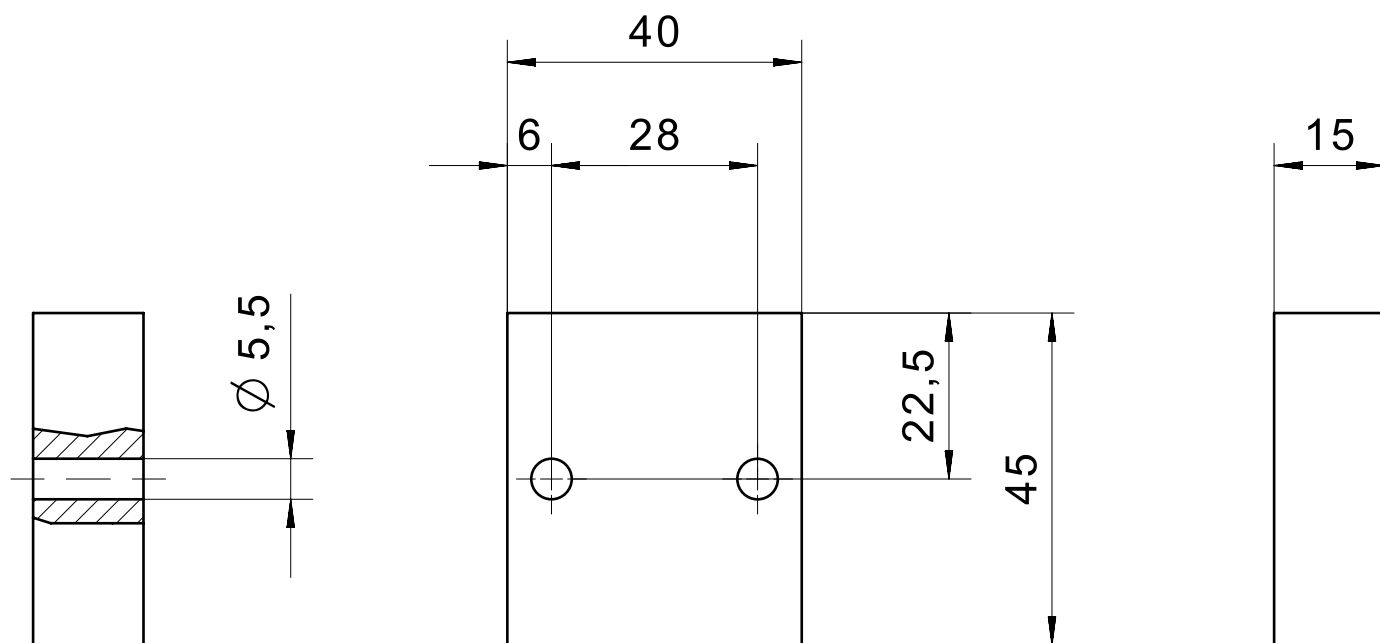


PHOTO 2/8

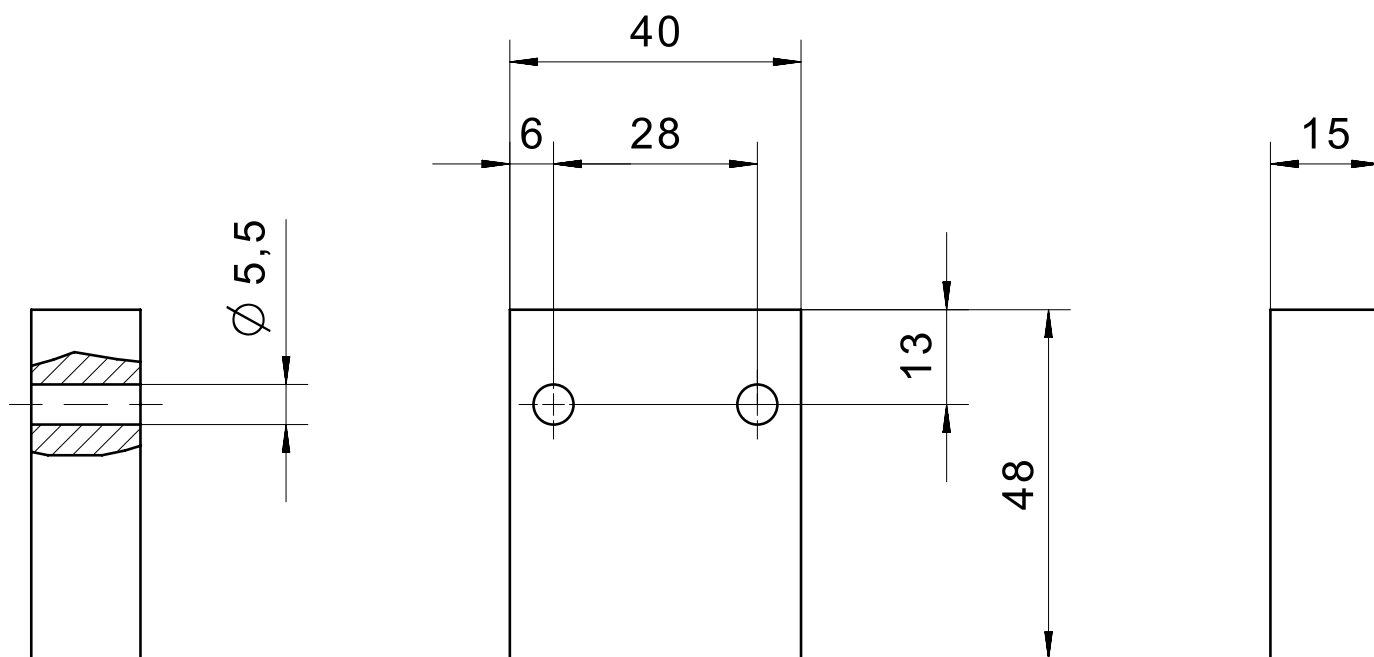


PHOTO 3/8

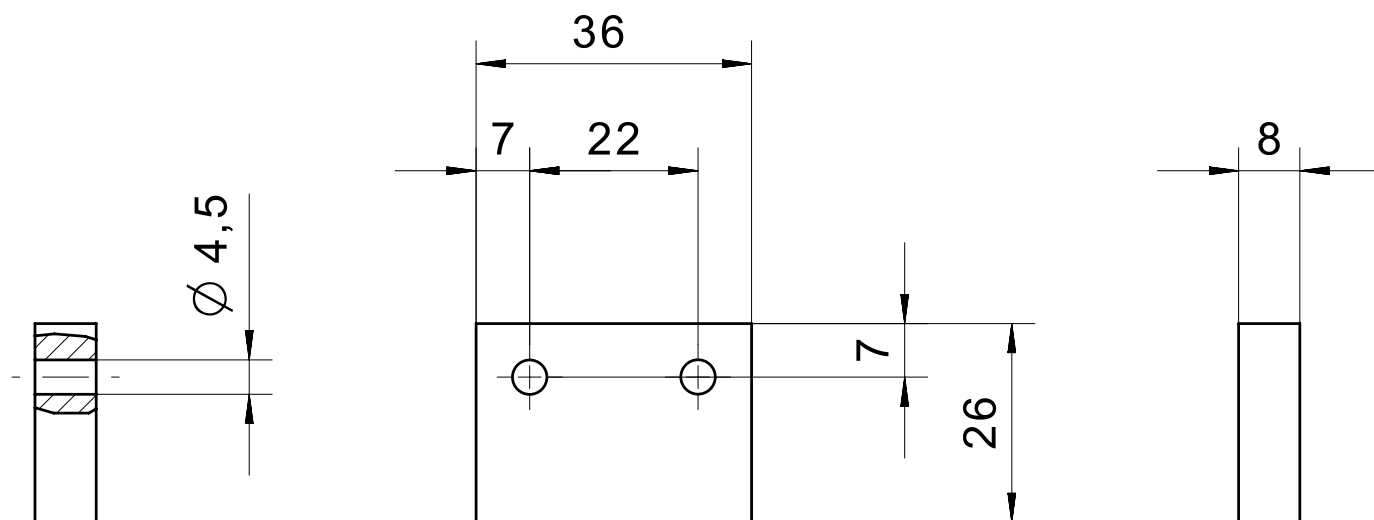


PHOTO 4/8

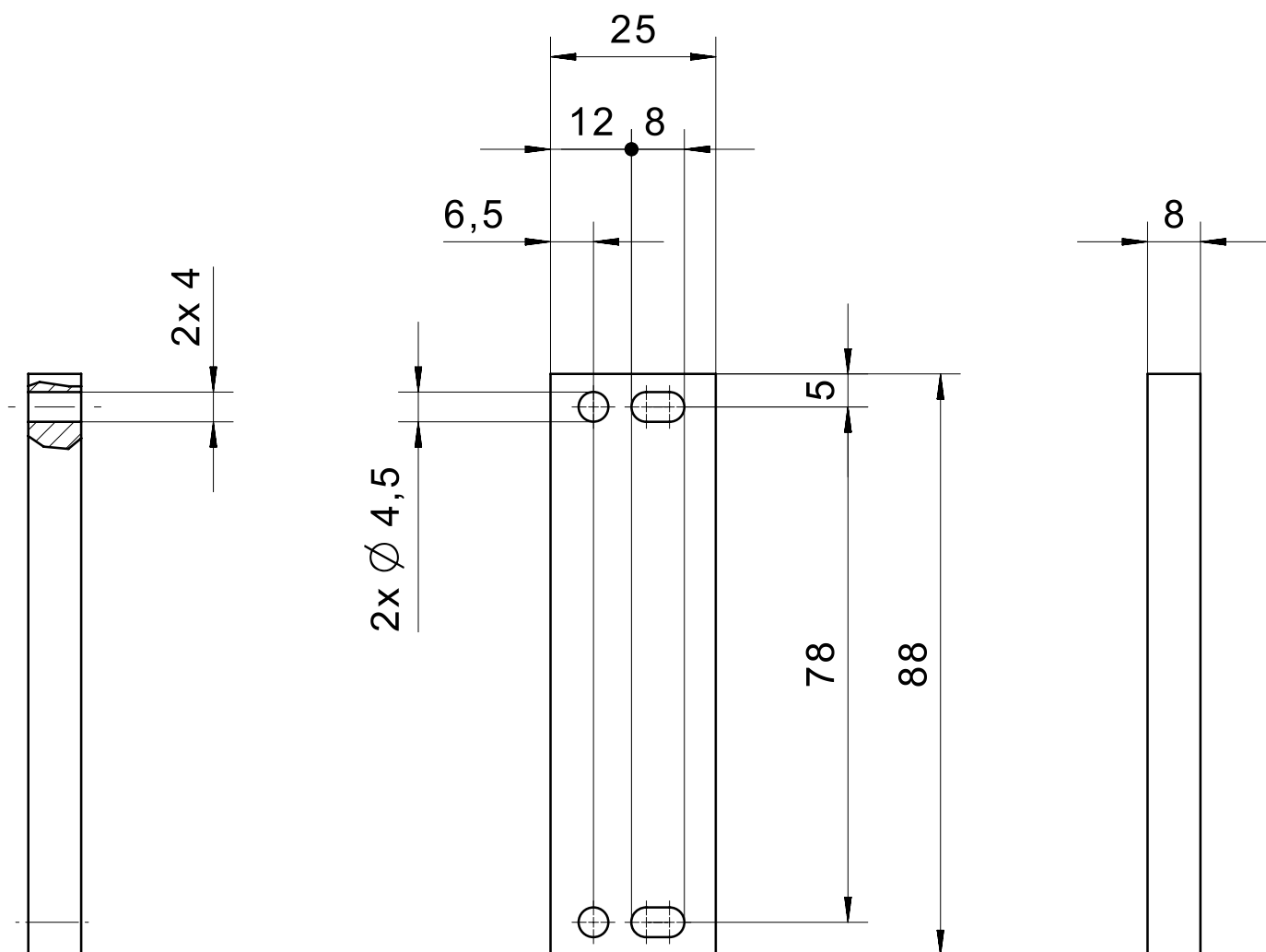


PHOTO 5/8

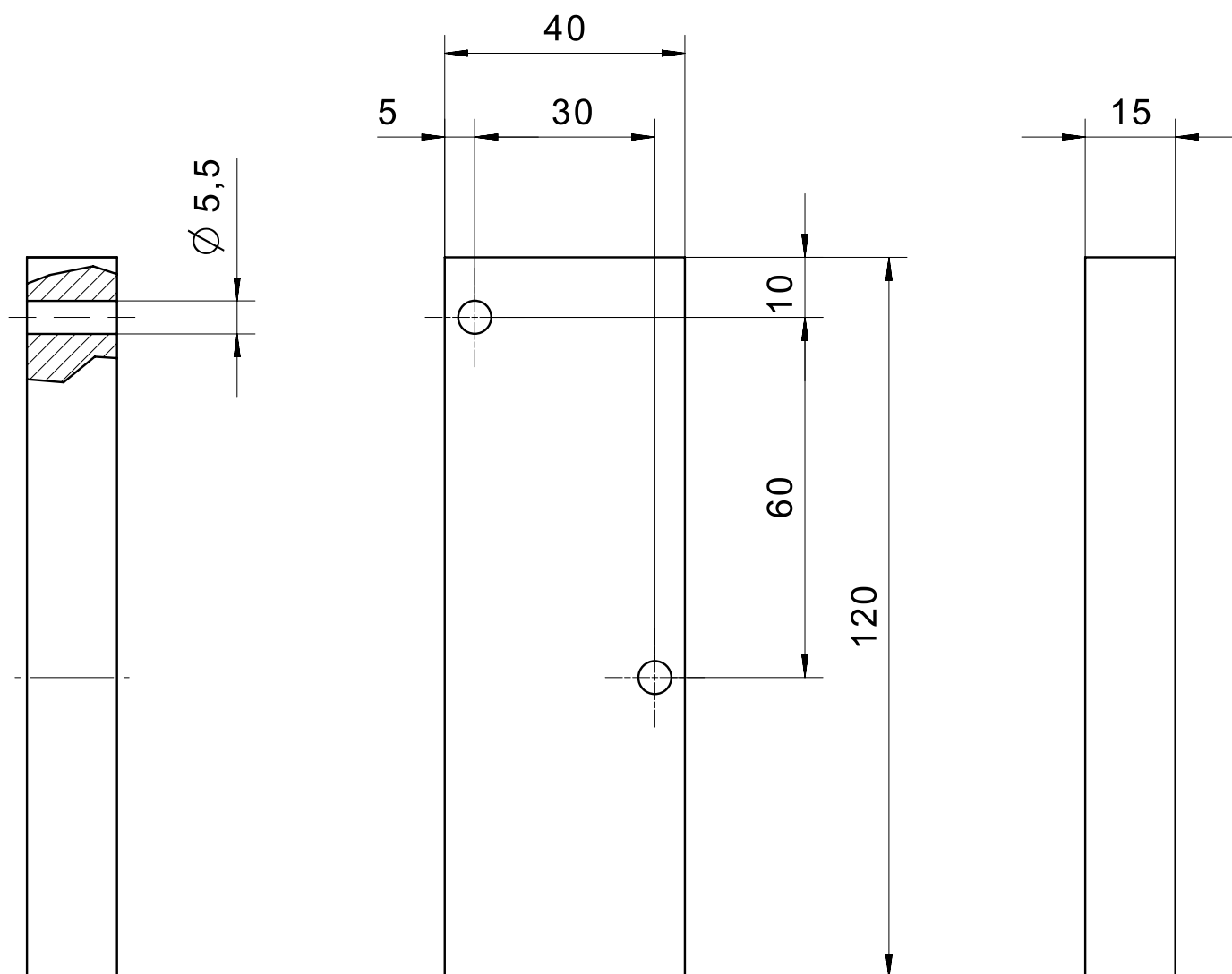


PHOTO 6/8

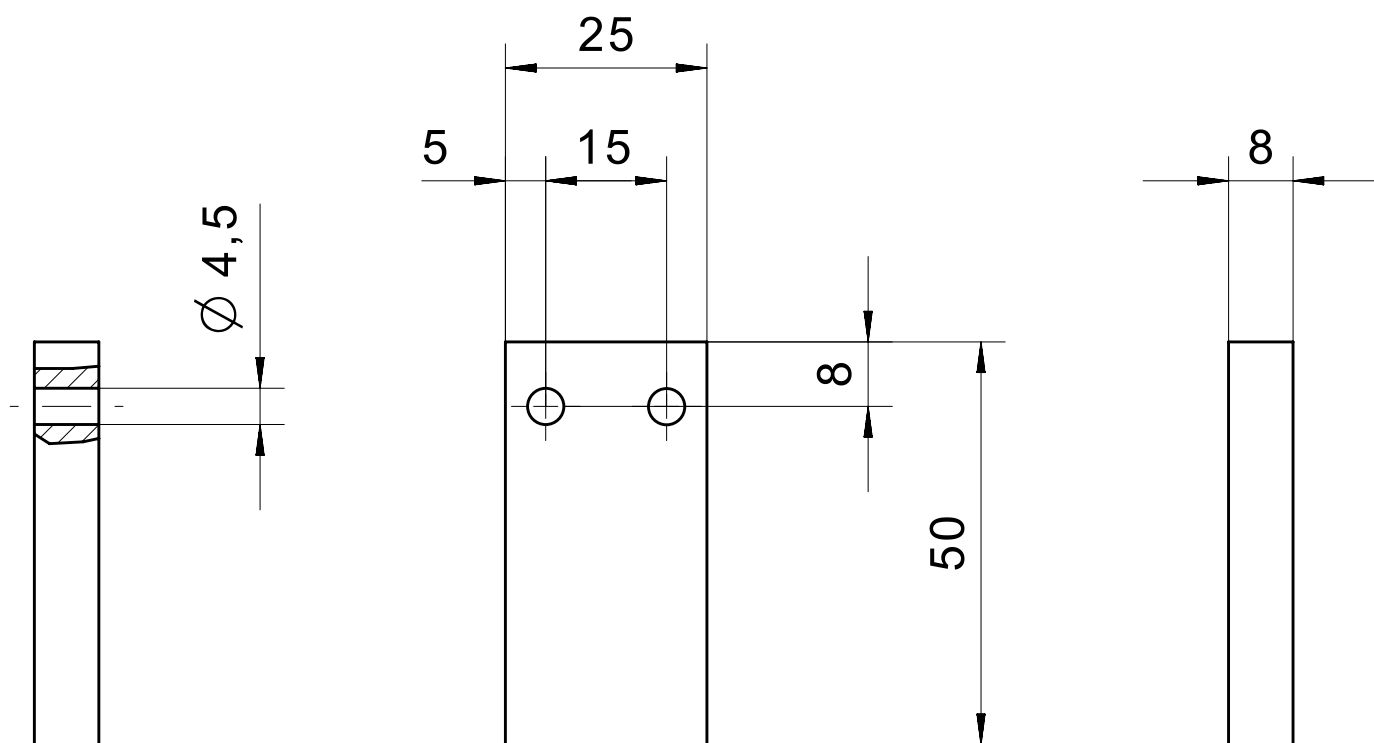


PHOTO 7/8

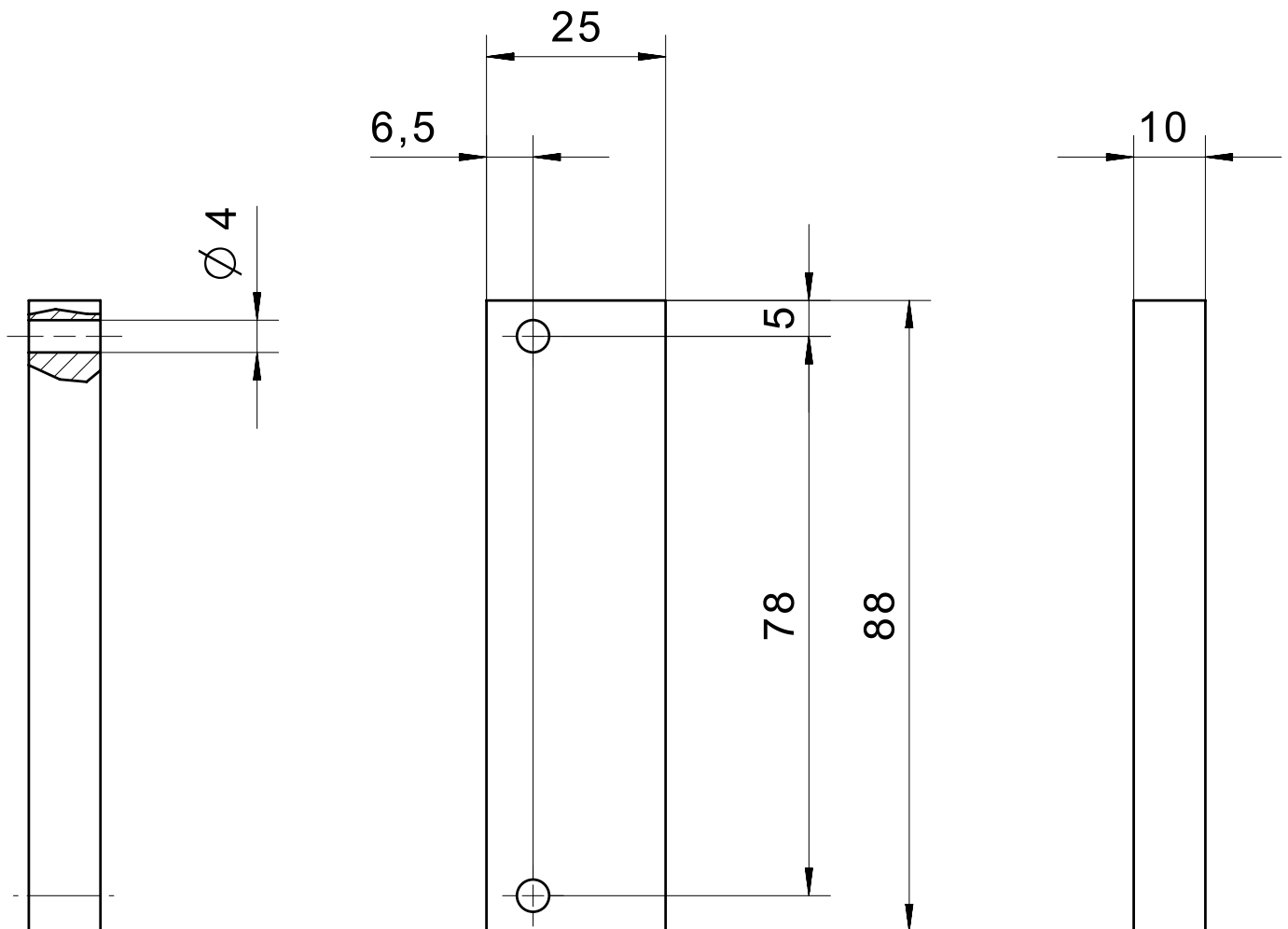
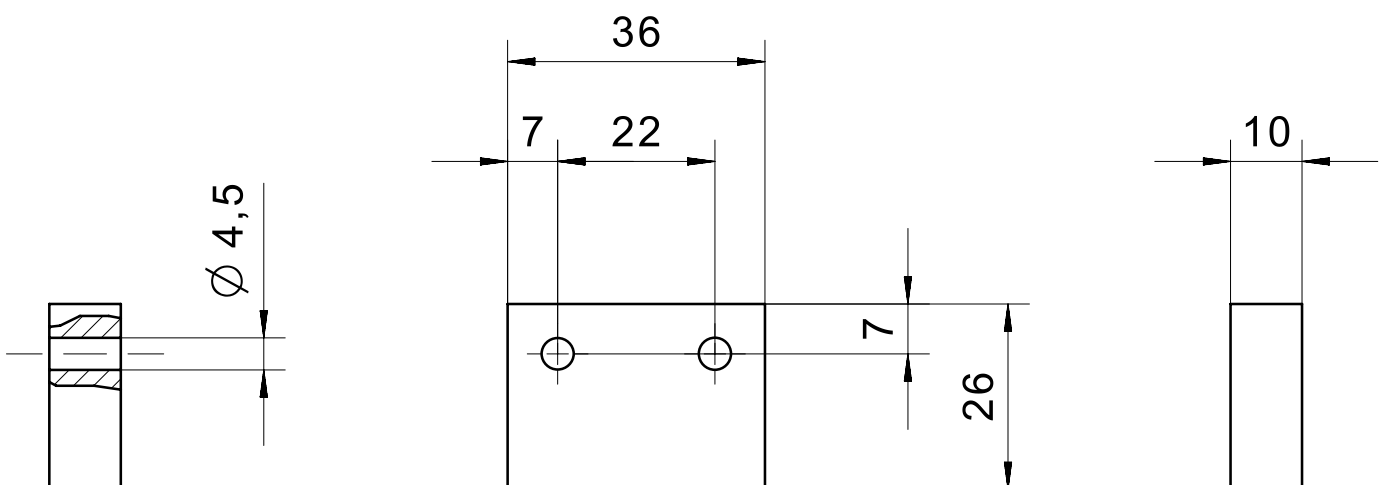


PHOTO 8/8



## Options de produit

PHOTO 1/1

### ORDERING KEY

| 350 |     | Spacer plates   |
|-----|-----|---|
|     | 002 | For safety sensor 161...  |
|     | 003 | For actuator 30422112   |
|     | 004 | Material thickness 8 mm – for safety sensor 153... and corresponding actuators  |
|     | 005 | Material thickness 8 mm – for safety sensor 165... and corresponding actuators  |
|     | 006 | For safety sensor with built-in relay 117...                                    |
|     | 007 | For safety sensor 114... and corresponding actuators                            |
|     | 008 | Material thickness 10 mm – for safety sensor 165... and corresponding actuators |
|     | 009 | Material thickness 10 mm – for safety sensor 153... and corresponding actuators |