



Supports 35000

Les détecteurs de sécurité et les aimants associés ne doivent pas être fixés directement sur un matériau ferritique. C'est pourquoi nous recommandons ici l'utilisation de nos supports.

Caractéristiques du produit

- Permet de monter des détecteurs de sécurité et des actionneurs directement sur un matériau ferritique

Dessin technique

PHOTO 1/8

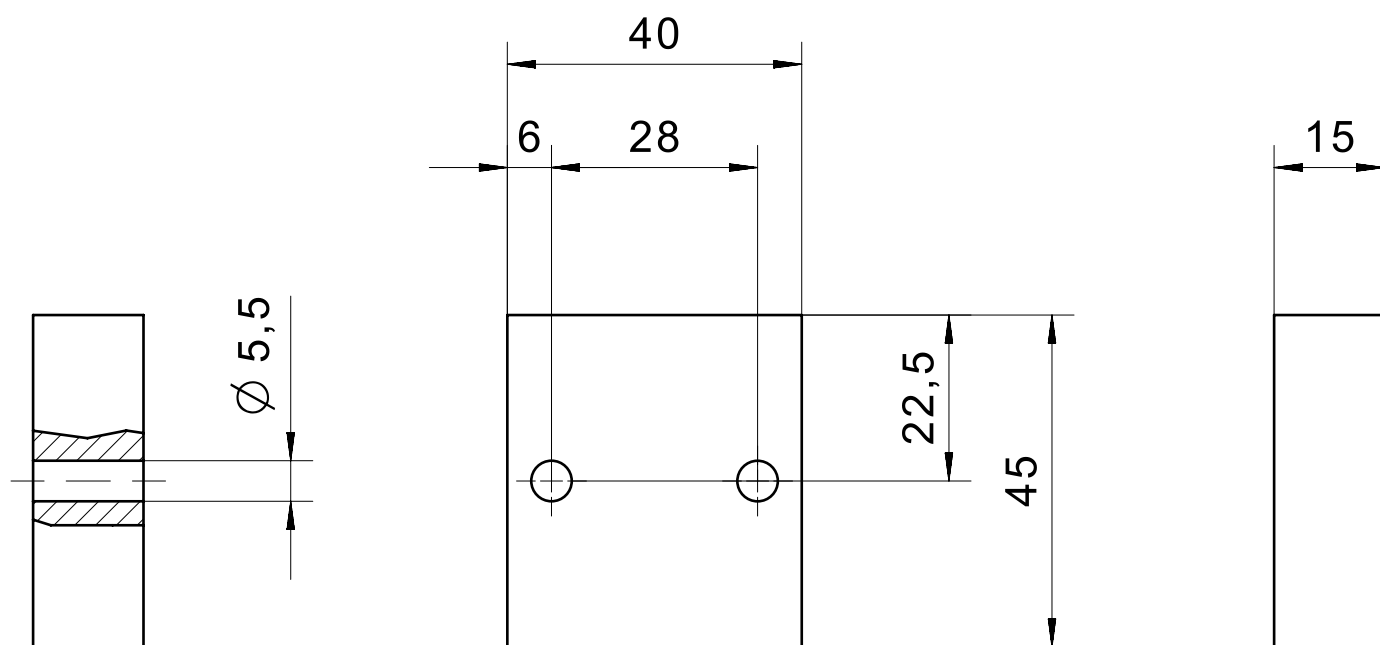


PHOTO 2/8

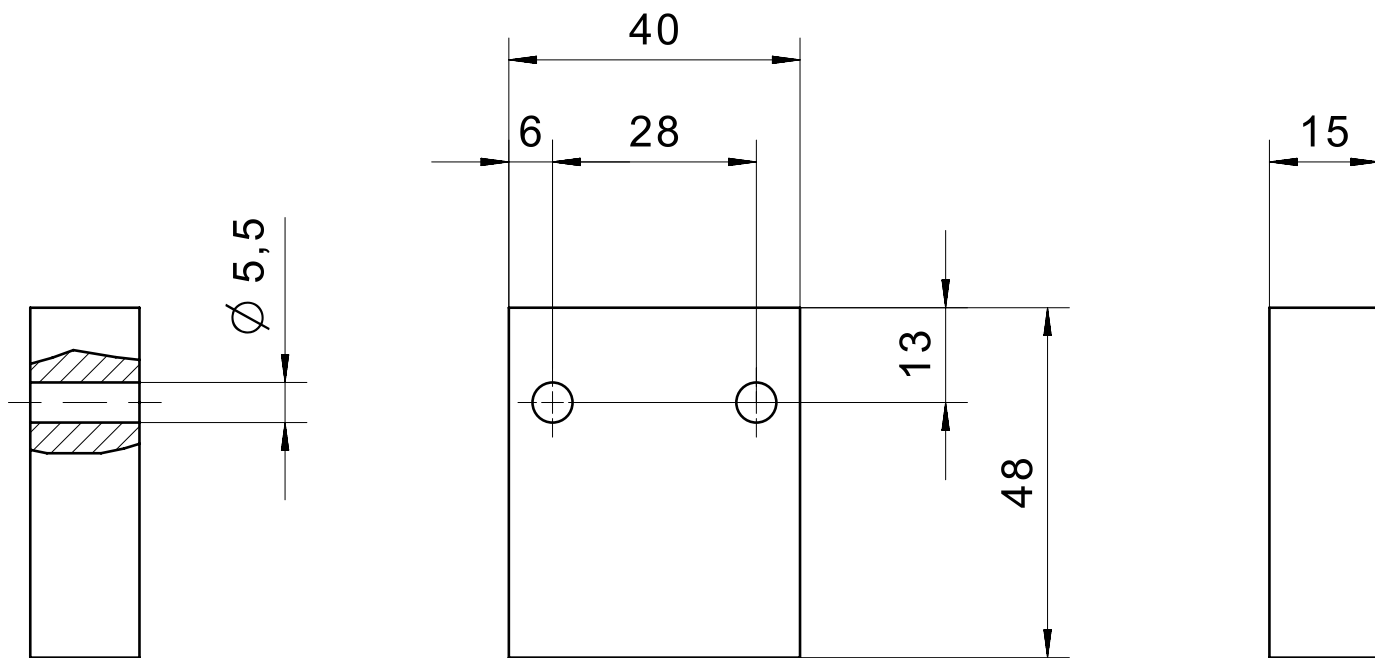


PHOTO 3/8

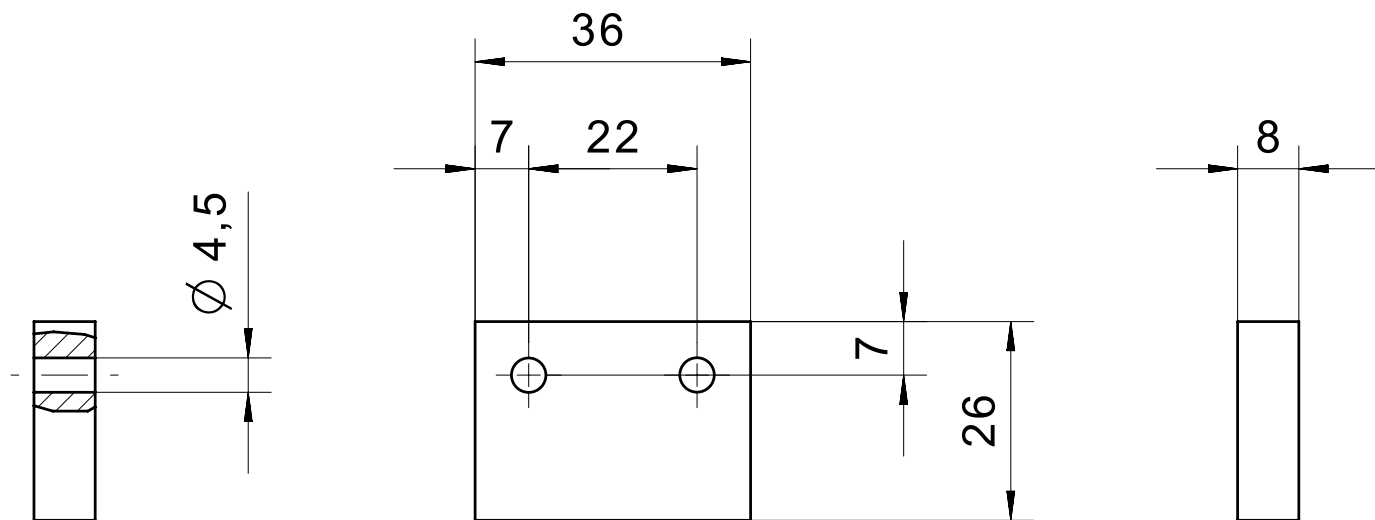


PHOTO 4/8

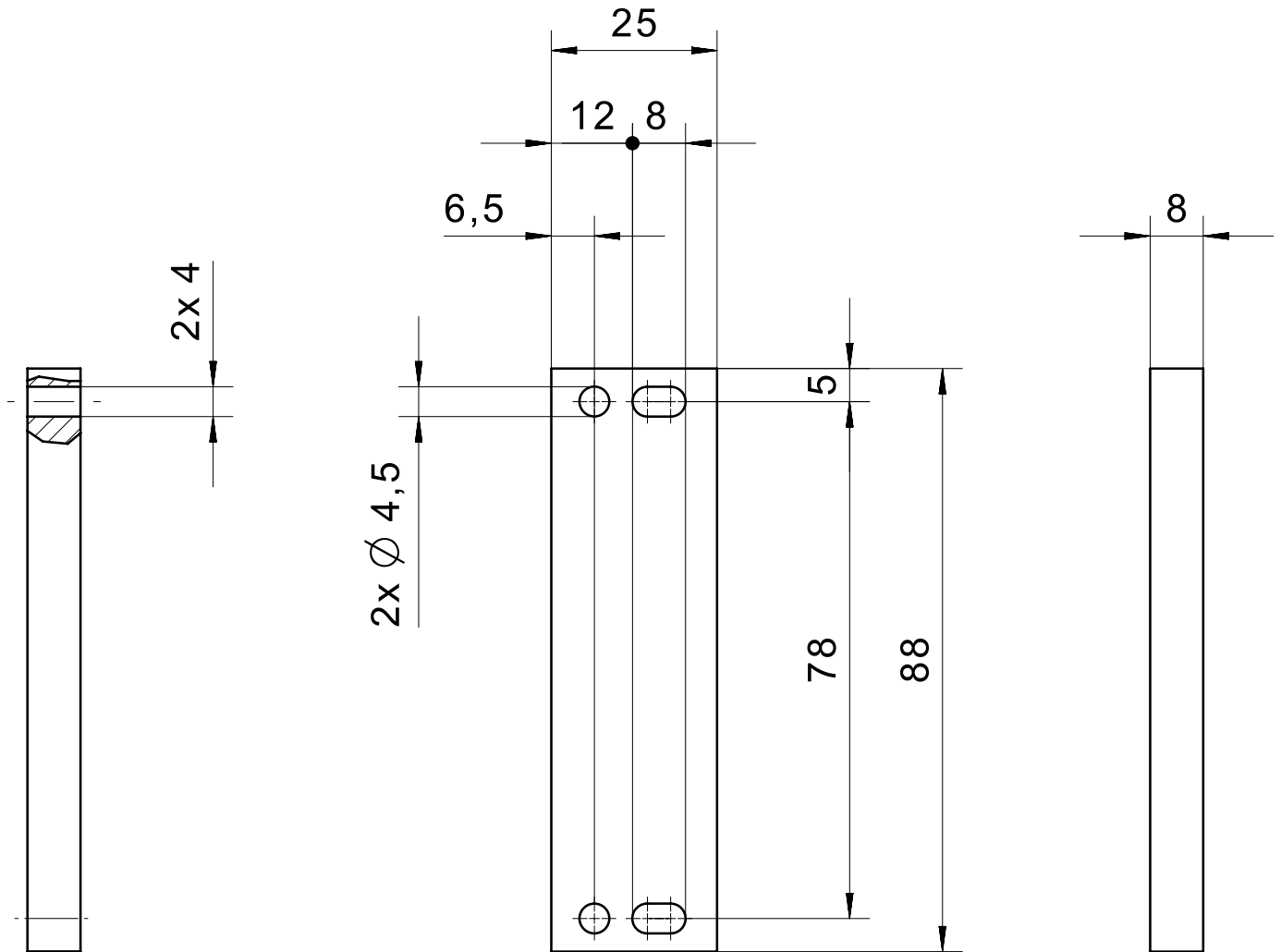


PHOTO 5/8

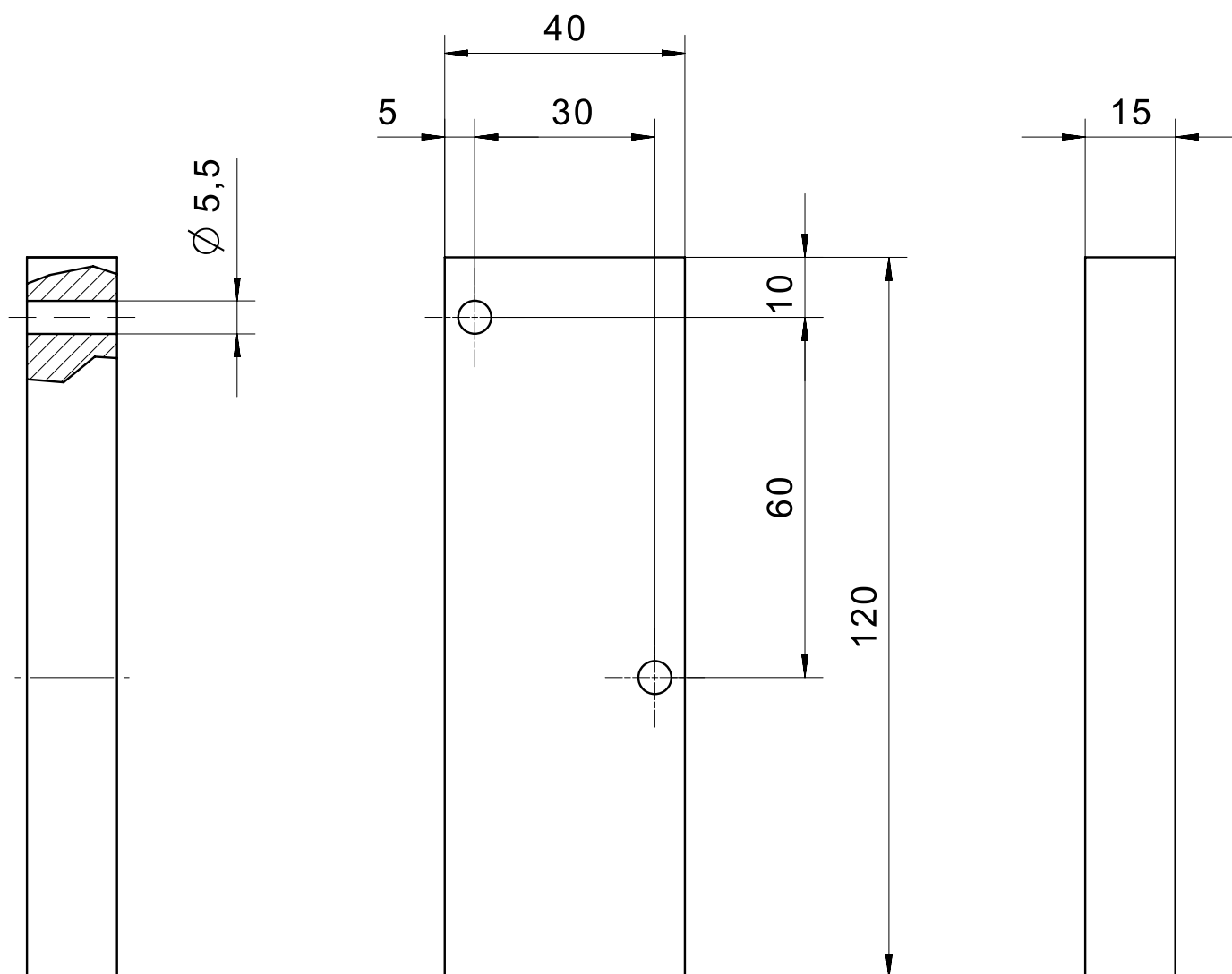


PHOTO 6/8

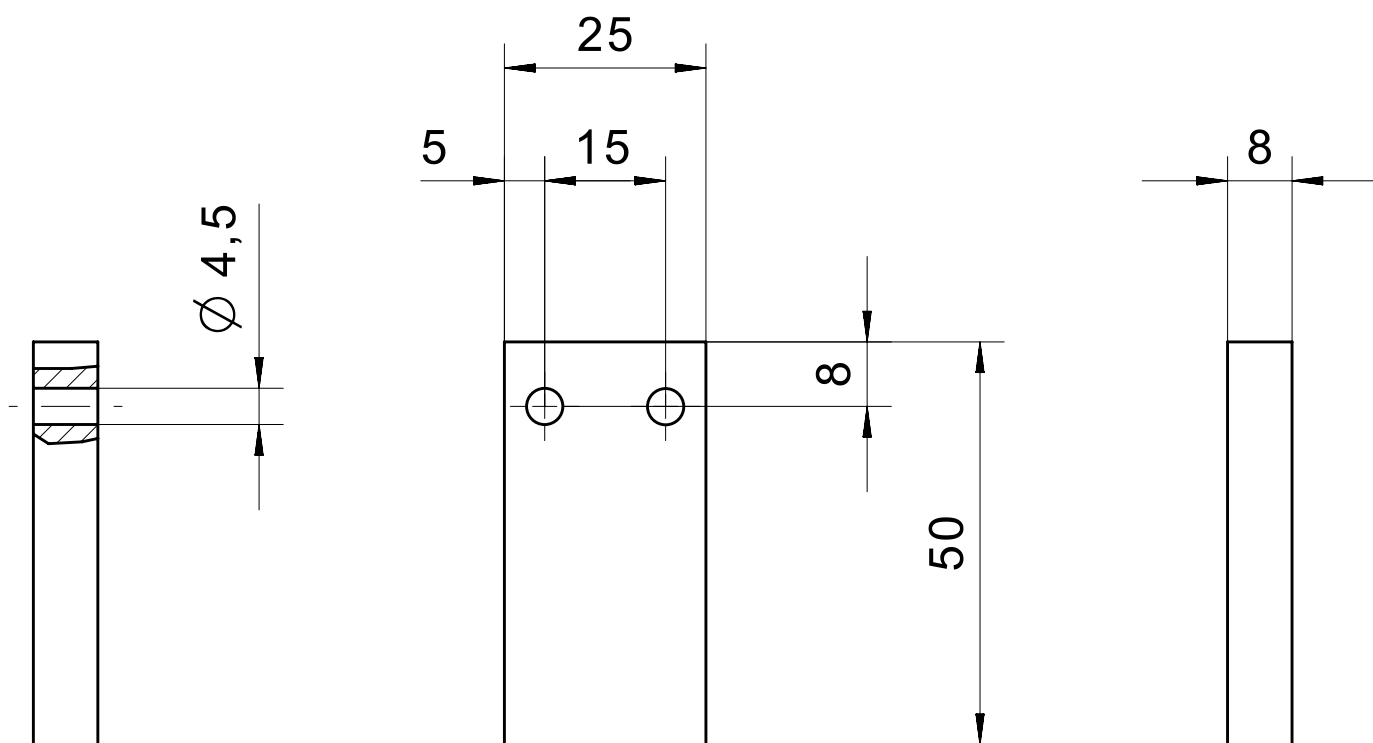


PHOTO 7/8

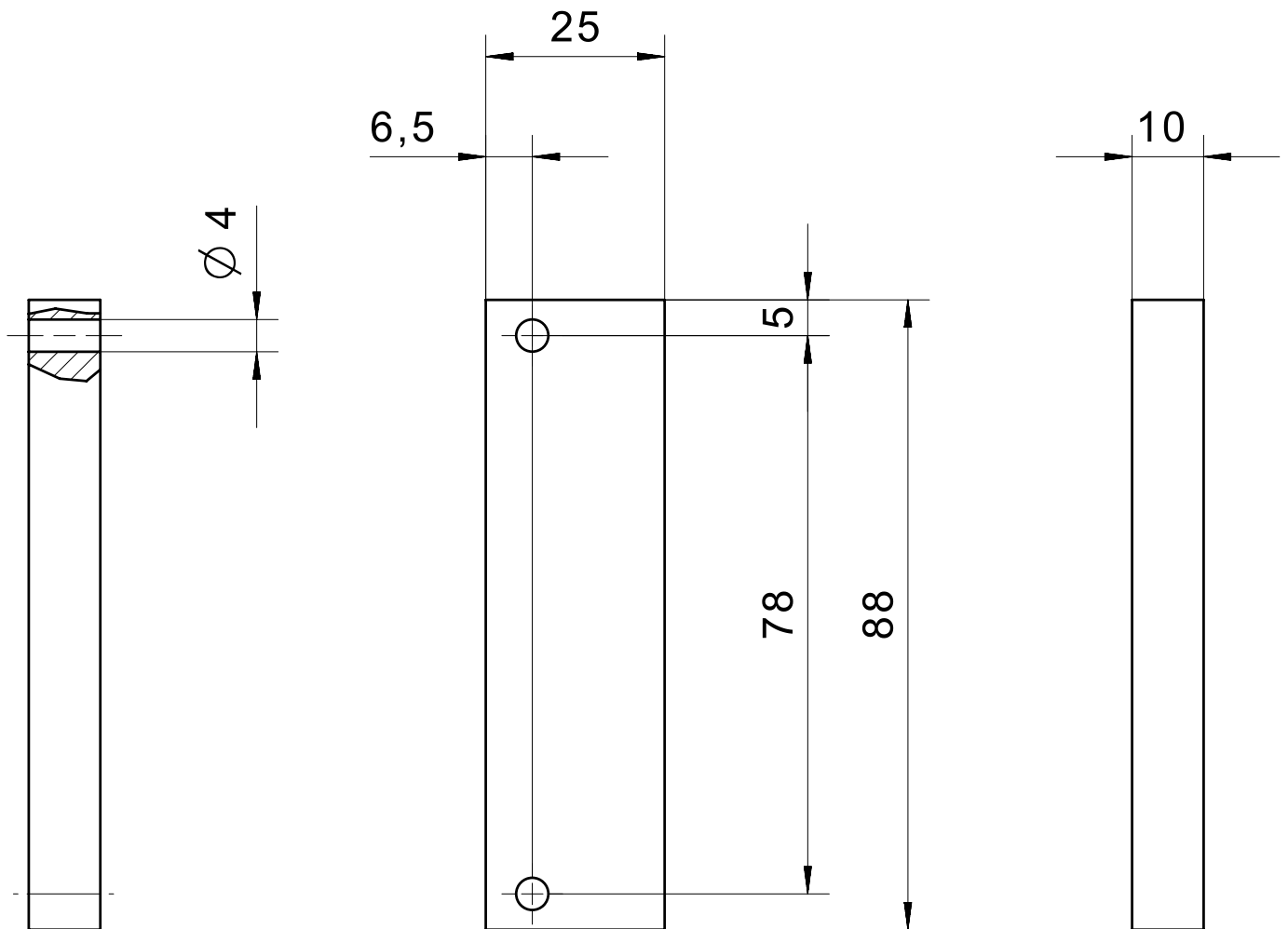
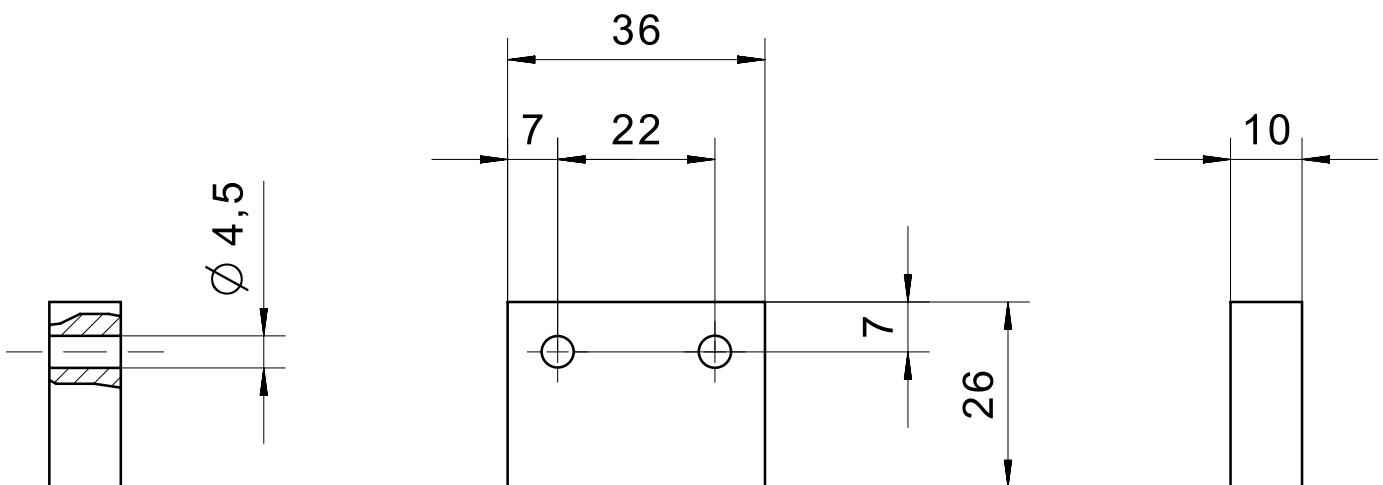


PHOTO 8/8



Options de produit

PHOTO 1/1

ORDERING KEY

| 350 | | Spacer plates |
|-----|-----|---|
| | 002 | For safety sensor 161... |
| | 003 | For actuator 30422112 |
| | 004 | Material thickness 8 mm – for safety sensor 153... and corresponding actuators |
| | 005 | Material thickness 8 mm – for safety sensor 165... and corresponding actuators |
| | 006 | For safety sensor with built-in relay 117... |
| | 007 | For safety sensor 114... and corresponding actuators |
| | 008 | Material thickness 10 mm – for safety sensor 165... and corresponding actuators |
| | 009 | Material thickness 10 mm – for safety sensor 153... and corresponding actuators |