



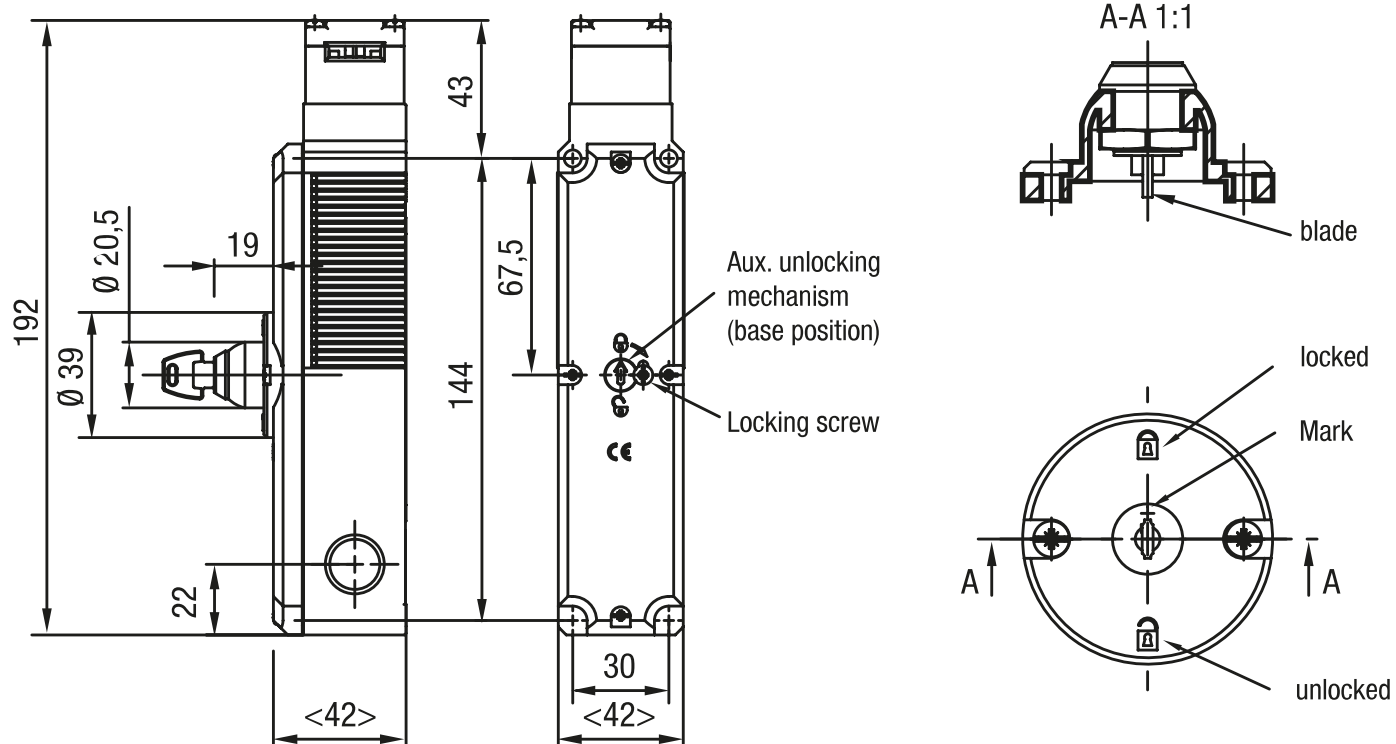
## Systeme de déverrouillage

### Caractéristiques du produit

- Matériau : inox 1.4301

### Dessin technique

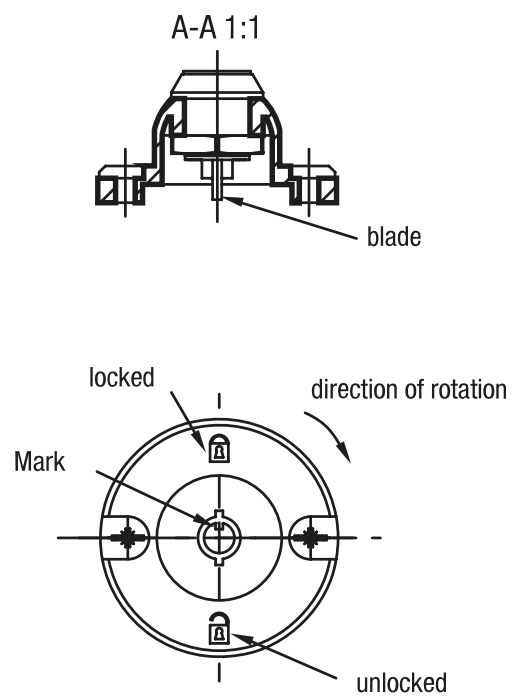
PHOTO 1/2: ZLO SCHLOSS VERSCHIEDENSCHLIESSEND / INDIVIDUALSCHLÜSSEL, AUF 0° UND 180° ABZIEHBAR



Technical drawing of the front and side views of the 1000mm x 600mm x 25mm LED strip light housing. The front view shows a rectangular housing with a central LED strip (144mm long) and a mounting bracket (19mm high). The side view shows the housing's profile with a total height of 192mm and a mounting bracket height of 43mm. Dimensions are given in mm.

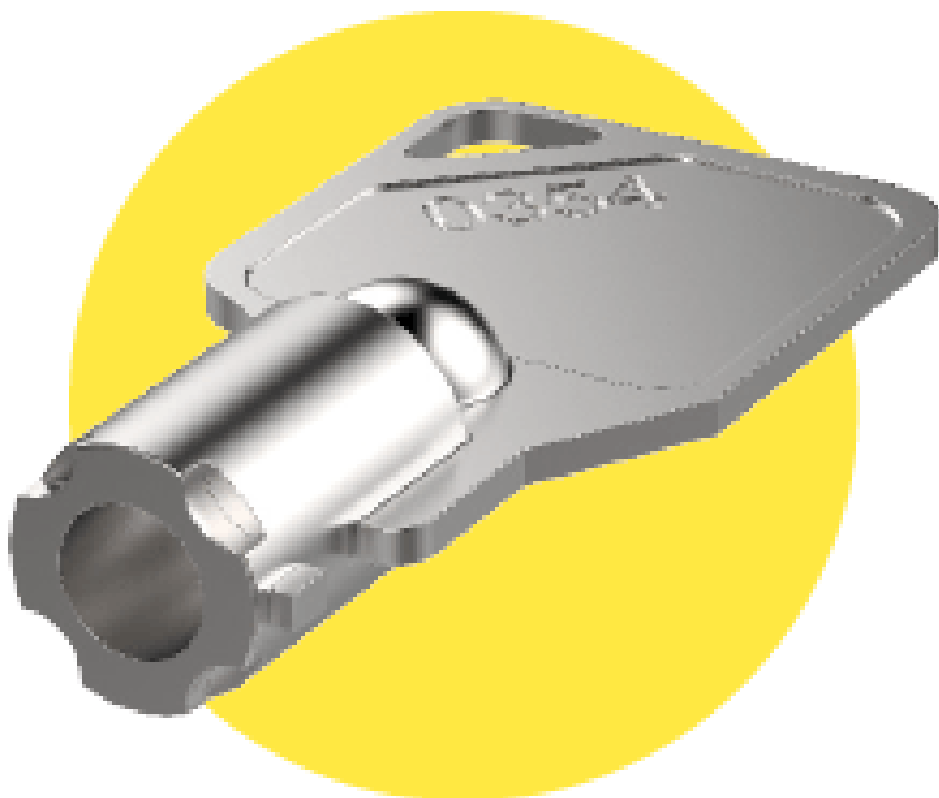
Aux. unlocking  
mechanism  
(base position)

Locking screw



## Options de produit

PHOTO 1/2



# ZL2 replacement key for lock, simultaneous locking (2 pcs.)

PHOTO 2/2

## ORDERING KEY

ZL	Pivot for supporting release
0	Lock, individual locking / individual key, removable at 0° and 180°
1	Lock, simultaneous locking / universal key, removable at 0° and 180°
2	Replacement key for lock, simultaneous locking (2 pcs.)

## Caractéristiques des articles

Attributs	ZL0	ZL1	ZL2
Dimensions	D 39 x 19 mm		-
Position de serrage	2		-
Type de fermeture	à fermeture différente	à fermeture identique	
Type de clé	Clé individuelle	Passe-partout	Clé de rechange
Matériau du boîtier	Kunststoff		Stahl rostfrei
Type de fixation	vissé		-