



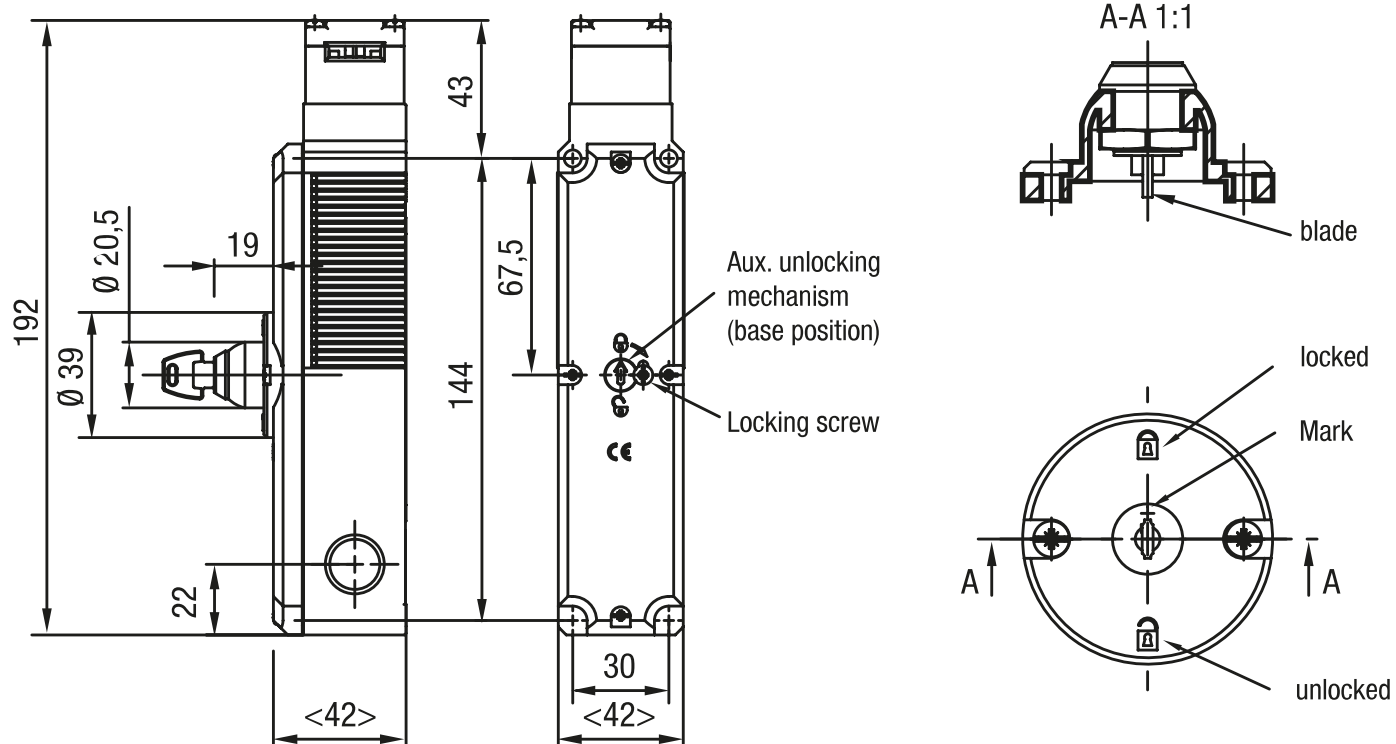
Systeme de déverrouillage

Caractéristiques du produit

- Matériau : inox 1.4301

Dessin technique

PHOTO 1/2: ZLO SCHLOSS VERSCHIEDENSCHLIESSEND / INDIVIDUALSCHLÜSSEL, AUF 0° UND 180° ABZIEHBAR



Technical drawing of the CE 1000 lock assembly, showing side and top views with dimensions and labels.

Side View Dimensions:

- Total height: 192
- Height of the main body: 144
- Height of the top section: 43
- Height of the bottom section: 22
- Height of the locking mechanism: 67,5
- Width of the main body: 42
- Width of the bottom section: 30
- Width of the locking mechanism: 19
- Inner diameter: $\varnothing 20,5$
- Outer diameter: $\varnothing 39$

Labels:

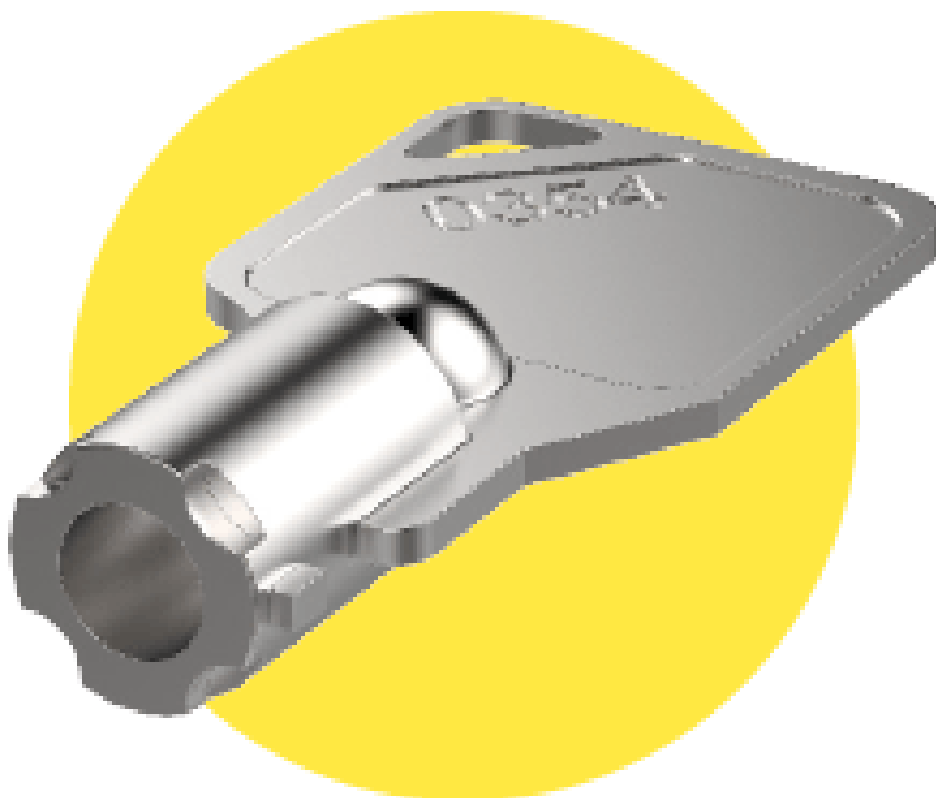
- Aux. unlocking mechanism (base position)
- Locking screw
- CE

Top View:

- Section line A-A 1:1
- blade
- locked
- direction of rotation
- Mark
- unlocked

Options de produit

PHOTO 1/2



ZL2 replacement key for lock, simultaneous locking (2 pcs.)

PHOTO 2/2

ORDERING KEY

ZL	Pivot for supporting release
0	Lock, individual locking / individual key, removable at 0° and 180°
1	Lock, simultaneous locking / universal key, removable at 0° and 180°
2	Replacement key for lock, simultaneous locking (2 pcs.)

Caractéristiques des articles

Attributs	ZL0	ZL1	ZL2
Dimensions	D 39 x 19 mm		-
Position de serrage	2		-
Type de fermeture	à fermeture différente	à fermeture identique	
Type de clé	Clé individuelle	Passe-partout	Clé de rechange
Matériau du boîtier	Kunststoff		Stahl rostfrei
Type de fixation	vissé		-