

Vane switch 147

Vane switches are actuated by ferromagnetic metal plates at the gap of the U shaped housing, so no additional actuating magnet is required. Can also be mounted directly onto metal.

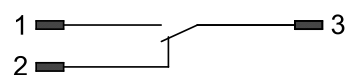
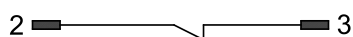
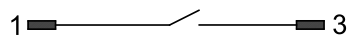
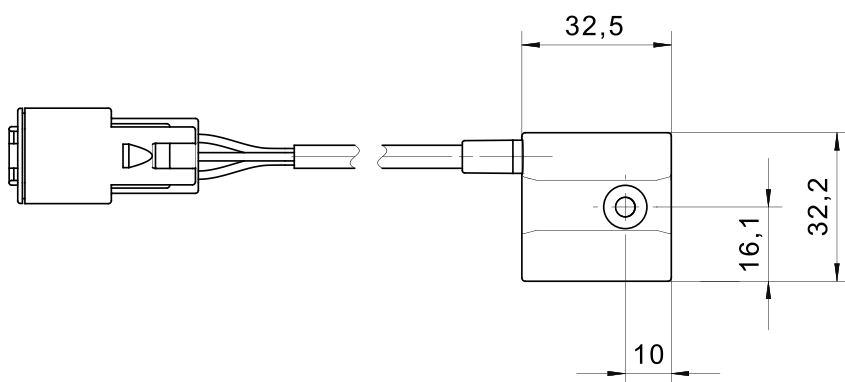
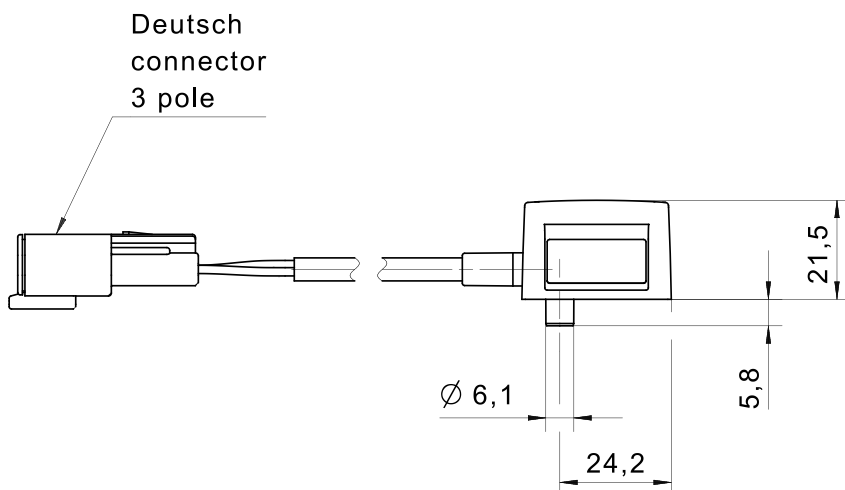
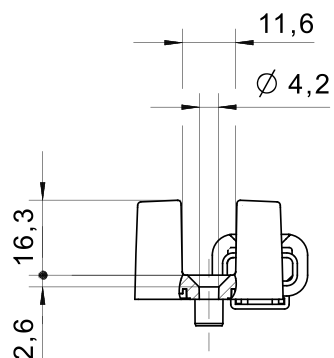
Different variants are available, allowing the switch to be used in a variety of applications, e.g. challenging off-highway tasks or position sensing in plant and mechanical engineering.

Product characteristics

- No additional actuating magnet necessary
- Compact housing for space-saving installation
- Temperature stability and vibration resistance specially configured for the requirements of automotive applications
- IP6K7 protection class
- PBT housing
- 32.5 x 32.25 x 21.51 mm
- PUR cable with Deutsch connector

Technical drawing

IMAGE 1/1



Product options

IMAGE 1/1

ORDERING KEY

1471			Vane switch, reed contact
	02B		N.O. - cable connection 0.3m with Deutsch connector DTM04-3P
	12B		N.C. - cable connection 0.3m with Deutsch connector DTM04-3P
	22B		C.O. - cable connection 0.3m with Deutsch connector DTM04-3P
			More connectors and slot switches without connectors on request
			Other available cable lengths
		-3	3 m
		-5	5 m
		-10	10 m
			Other cable materials and cable lengths on request

Article characteristics

Attribute	147102B	147112B	147122B	ED147102B	ED147112B	ED147122B
Max. switching voltage	48 V DC			-		
Max. switching voltage	48 V AC			-		
Max. switching current	0.5 A			-		
Max. switching power	10 W			-		
Contact form	NO	NC	CO	-		
Technology	Reed			-		
Switching principle	magnetic			-		
Housing colour	Grey			-		
Dimensions	32,5x32,25x21,51			-		
Housing material	PBT			-		
Cable material	PUR			-		
Protection class	IP6K5 / IP6K7 ISO20653			-		
Operating temperature min.	-40 °C			-		
Max. operating temperature	85 °C			-		
Min. storage temperature	-40 °C			-		
Max. storage temperature	85 °C			-		
Min. cable temperature range, moving	-30 °C			-		
Max. cable temperature range, moving	90 °C			-		
Min. cable temperature range, fixed installation	-40 °C			-		
Max. cable temperature range, fixed installation	90 °C			-		
Shock resistance (Norm)	EN 60068-2-27			-		
Vibration resistance (Norm)	EN 60068-2-64			-		
Mounting type	screwed			-		
Connector type	Deutsch DTM 3pol.			-		
Cable length	0.3 m			-		