



Vane switch 1405

Vane switches are actuated by ferromagnetic metal plates at the gap of the U shaped housing, so no additional actuating magnet is required. Can also be mounted directly onto metal.

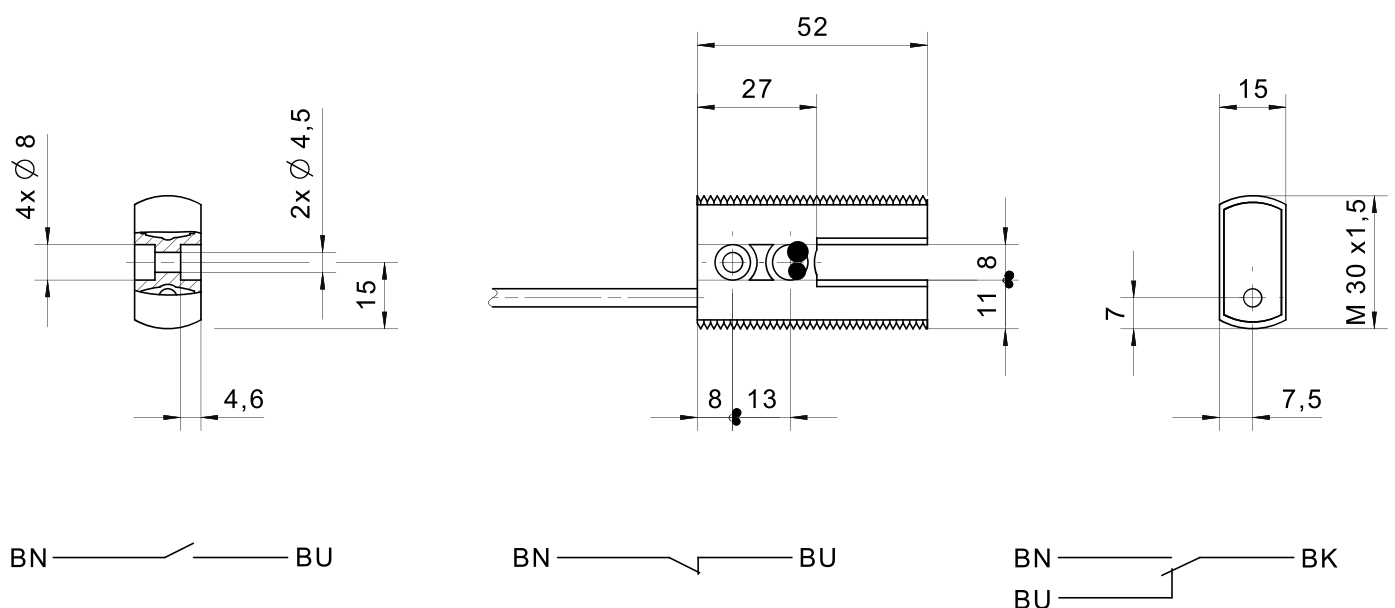
Different variants are available, allowing the switch to be used in a variety of applications, e.g. challenging off-highway tasks or position sensing in plant and mechanical engineering.

Product characteristics

- No additional actuating magnet necessary
- Flat PA housing for space-saving installation
- Variable fastening by means of thread on the housing, optional fastening nuts available
- IP67 protection class
- M30 x 52 x 15 mm
- PVC cable

Technical drawing

IMAGE 1/1



Product options

IMAGE 1/1

ORDERING KEY

1405			Vane switch, reed contact
	10		N.O. – cable connection 1m
	20		N.C. – cable connection 1m
	30		C.O – cable connection 1m
			Other available cable lengths
		-3	3 m
		-5	5 m
		-10	10 m
			Other cable materials and cable lengths on request

Article characteristics

Attribute	140510	140520	140530
Max. switching voltage	48 V DC		
Max. switching voltage	48 V AC		
Max. switching current	0.5 A		
Max. switching power	10 W		
Contact form	NO	NC	CO
Technology	Reed		
Switching principle	magnetic		
Housing colour	Black		
Dimensions	M30x1.5 L=52		
Housing material	PA6		
Cable material	PVC		
Protection class	IP67 DIN EN 60529		
Operating temperature min.	-25 °C		
Max. operating temperature	75 °C		
Min. storage temperature	-25 °C		
Max. storage temperature	75 °C		
Min. cable temperature range, moving	-10 °C		-5 °C
Max. cable temperature range, moving	90 °C		70 °C
Min. cable temperature range, fixed installation	-25 °C		
Max. cable temperature range, fixed installation	90 °C		70 °C
Mounting type	screwed		
Cable length	1 m		