



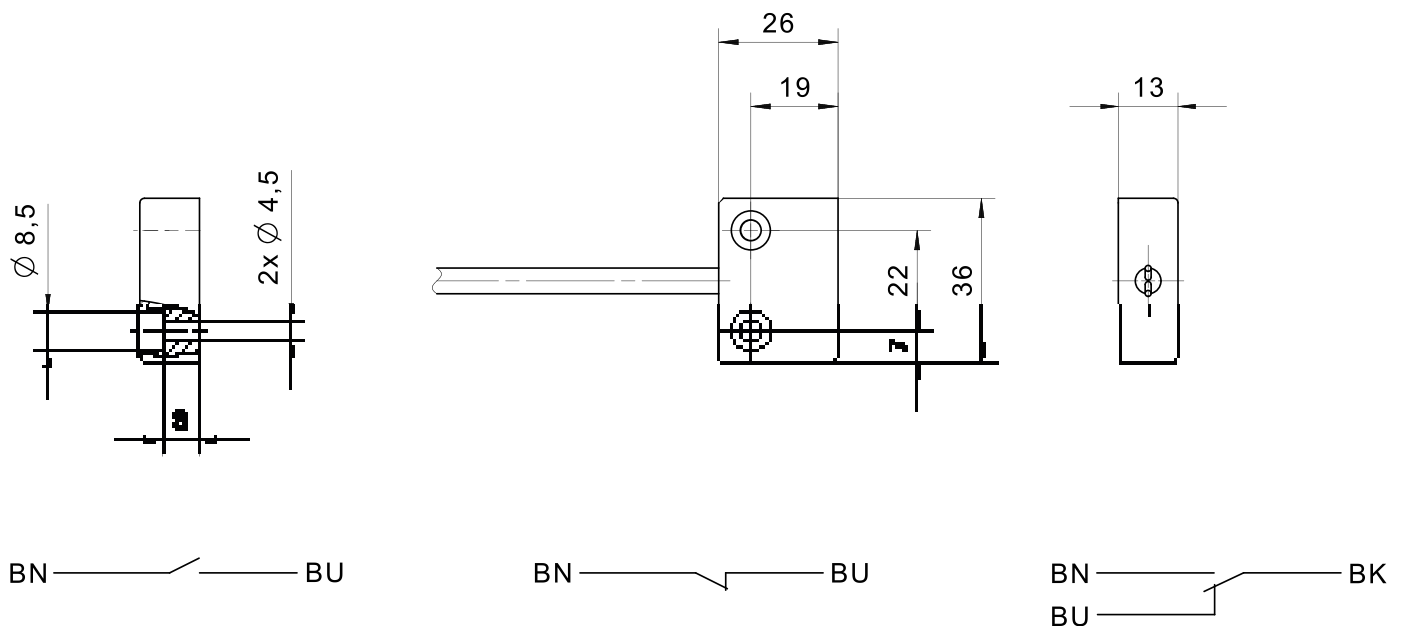
Magnetic sensor 153

Product characteristics

- Flat magnetic sensor on reed-contact basis
- PA housing
- 26 x 36 x 13 mm
- PVC cable

Technical drawing

IMAGE 1/1



Product options

IMAGE 1/2



TYPICAL SWITCHING DISTANCES

	153210			153220			153230		
ACTUATORS	L1	L2	L3	L1	L2	L3	L1	L2	L3
324790	13 mm	6 mm	-	10 mm	5 mm	-	11 mm	12 mm	9 mm
300790	17 mm	9 mm	mm	13 mm	7 mm	6 mm	15 mm	15 mm	13 mm
300780	25 mm	12 mm	13 mm	22 mm	12 mm	13 mm	23 mm	20 mm	20 mm

Further actuators and switching distances on request

IMAGE 2/2

ORDERING KEY

153			Flat switch, reed contact
	210		N.O. – cable connection 1 m
	220		N.C. – cable connection 1 m
	230		C.O. – cable connection 1 m
			Other electrical data, housing with LED, on request
			Other available cable lengths
		-3	3 m
		-5	5 m
		-10	10 m
			Other cable materials and cable lengths on request

Article characteristics

Attribute	153210	153220	153230	ED153210	ED153220	ED153230
Max. switching voltage	48 V DC			-		
Max. switching voltage	48 V AC			-		
Max. switching current	0.5 A		1 A	-		
Max. switching power	10 W			-		
Contact form	NO	NC	CO	-		
Technology	Reed			-		
LED display	No			-		
Actuation	arbitrary			-		
Switching principle	magnetic			-		
Dimensions	36x26x13			-		
Housing design	cuboid			-		
Housing material	PA6			-		
Cable material	PVC			-		
Protection class	IP67 DIN EN 60529			-		
Operating temperature min.	-25 °C			-		
Max. operating temperature	70 °C	75 °C		-		
Min. storage temperature	-25 °C			-		
Max. storage temperature	70 °C		75 °C	-		
Min. cable temperature range, moving	-5 °C		-15 °C	-		
Max. cable temperature range, moving	70 °C		80 °C	-		
Min. cable temperature range, fixed installation	-25 °C		-40 °C	-		
Max. cable temperature range, fixed installation	70 °C		80 °C	-		
Mounting type	screwed			-		
Cable length	1 m			-		