



Hose connection sets

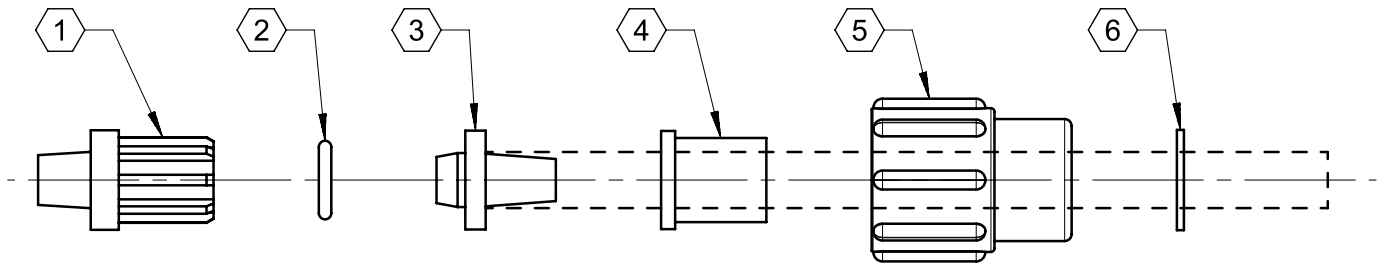
The connection set provides variability for different hose diameters. Various seals are included with the set.

Product characteristics

- Set includes various diameters from Ø4x6mm to Ø6x12mm
- FKM, EPDM and PTFE seals

Technical drawing

IMAGE 1/1



- ① collet - PP
- ② o-ring - EPDM black, PTFE white, FKM green
- ③ cone for tube connection - PVDF
 - inside \varnothing 3
 - inside \varnothing 4
- ④ shell for tube connection - PP
 - inside \varnothing 8
 - inside \varnothing 9
 - inside \varnothing 10
- ⑤ screw $\frac{5}{8}$ - 18 UNF - PP
- ⑥ clamping ring - 1.4571

Product options

IMAGE 1/1

ORDERING KEY

35207010	Hose connection sets
	\varnothing 4x6mm, \varnothing 5x8mm, \varnothing 5x9mm, \varnothing 6x8mm, \varnothing 6x9mm, \varnothing 6x10mm, \varnothing 6x12 mm with FKM, EPDM, PTFE seals

Article characteristics

Attribute	35207010	ED35207010
Suitable for	Sauglanze mit Gewindeabgang	-
Material	PP/PVDF	-
Sealing material	FKM/EPDM/PFE	-
Hose diameter	Ø4x6mm, Ø5x8mm, Ø5x9mm, Ø6x8mm, Ø6x9mm, Ø6x10mm, Ø6x12mm	-