



## Hose connection sets

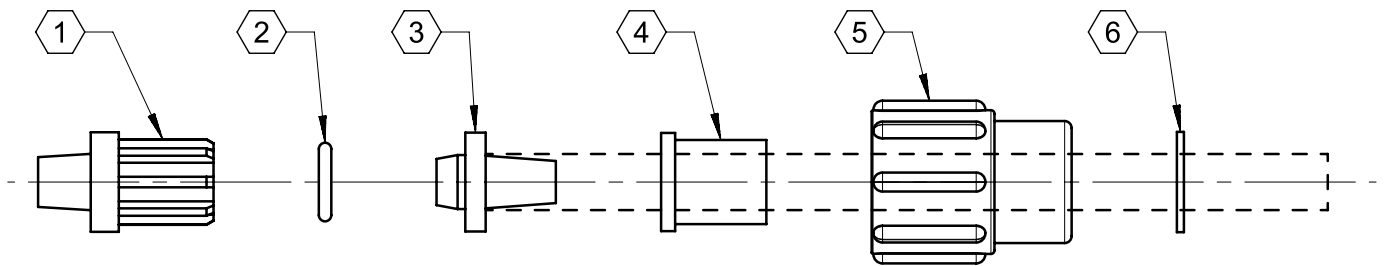
The connection set provides variability for different hose diameters. Various seals are included with the set.

### Product characteristics

- Set includes various diameters from Ø4x6mm to Ø6x12mm
- FKM, EPDM and PTFE seals

## Technical drawing

IMAGE 1/1



- ① collet - PP
- ② o-ring - EPDM black, PTFE white, FKM green
- ③ cone for tube connection - PVDF
  - inside  $\varnothing$  3
  - inside  $\varnothing$  4
- ④ shell for tube connection - PP
  - inside  $\varnothing$  8
  - inside  $\varnothing$  9
  - inside  $\varnothing$  10
- ⑤ screw  $\frac{5}{8}$  - 18 UNF - PP
- ⑥ clamping ring - 1.4571

## Product options

IMAGE 1/1

### ORDERING KEY

|          |   |
|----------|---|
| 35207010 | Hose connection sets  |
|          | $\varnothing$ 4x6mm, $\varnothing$ 5x8mm, $\varnothing$ 5x9mm, $\varnothing$ 6x8mm, $\varnothing$ 6x9mm, $\varnothing$ 6x10mm, $\varnothing$ 6x12 mm with FKM, EPDM, PTFE seals |

## Article characteristics

| Attribute        | 35207010   |
|------------------|--|
| Suitable for     | Sauglanze mit Gewindeabgang                              |
| Material         | PP/PVDF  |
| Sealing material | FKM/EPDM/PFE   |
| Hose diameter    | Ø4x6mm, Ø5x8mm, Ø5x9mm, Ø6x8mm, Ø6x9mm, Ø6x10mm, Ø6x12mm |