



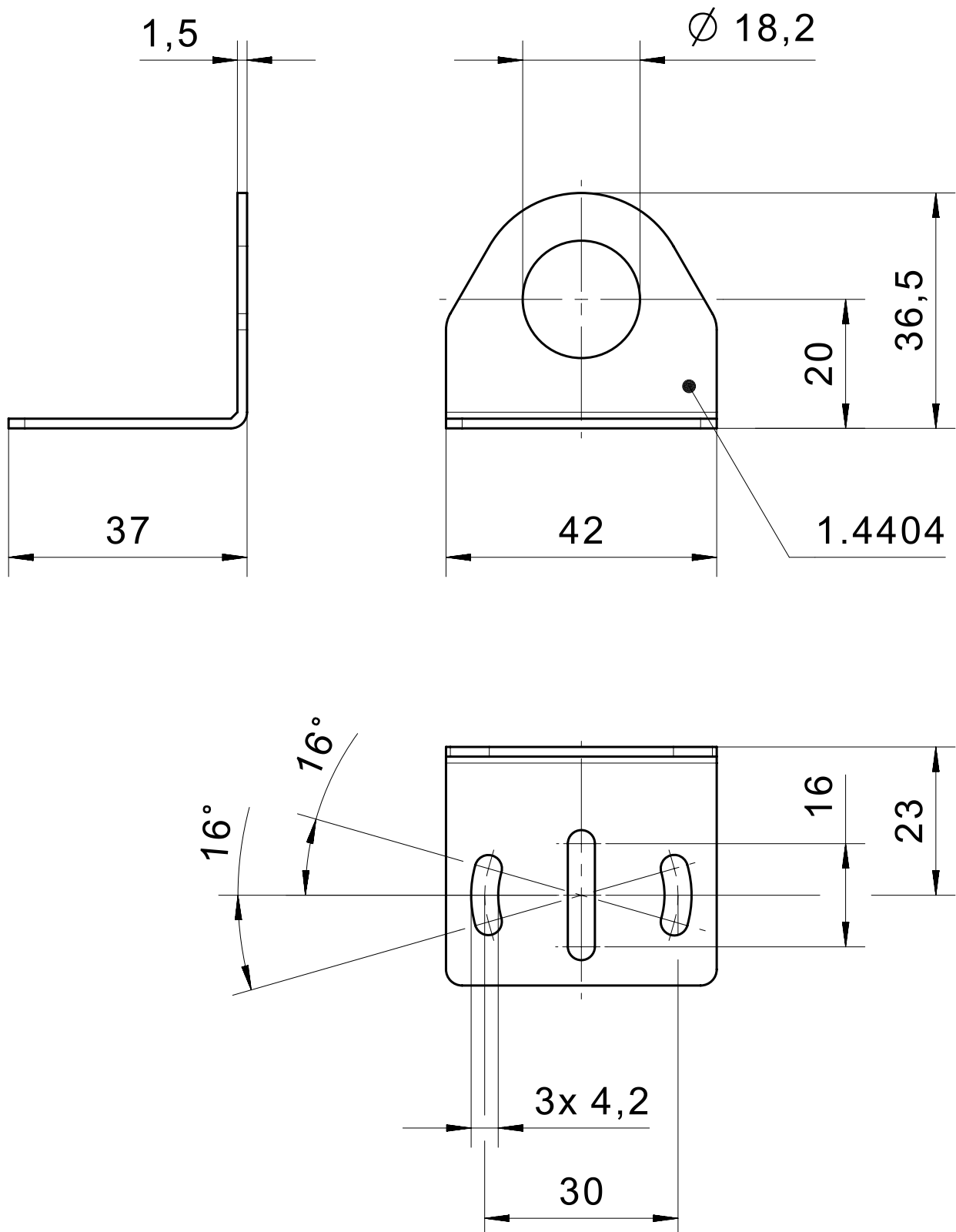
Mounting bracket for sensors

Product characteristics

- Suitable for M18 and M30 sensors
- Different materials and variants suitable for various installation situations

Technical drawing

IMAGE 1/4



Technical drawing of a mechanical part, showing a side view and a top view. The side view (left) shows a thickness of 1,5. The top view (right) shows a rectangular base with a semi-circular top. Dimensions include a width of 42, a semi-circular top radius of 18,2 (indicated by $\varnothing 18,2$), and a total height of 70,5. The base has three vertical slots, each 3,2 wide, with a total width of 30. The distance from the bottom edge to the center of the slots is 14, and the distance from the center of the slots to the top edge is 16. The material specification is 1.4404.

IMAGE 3/4

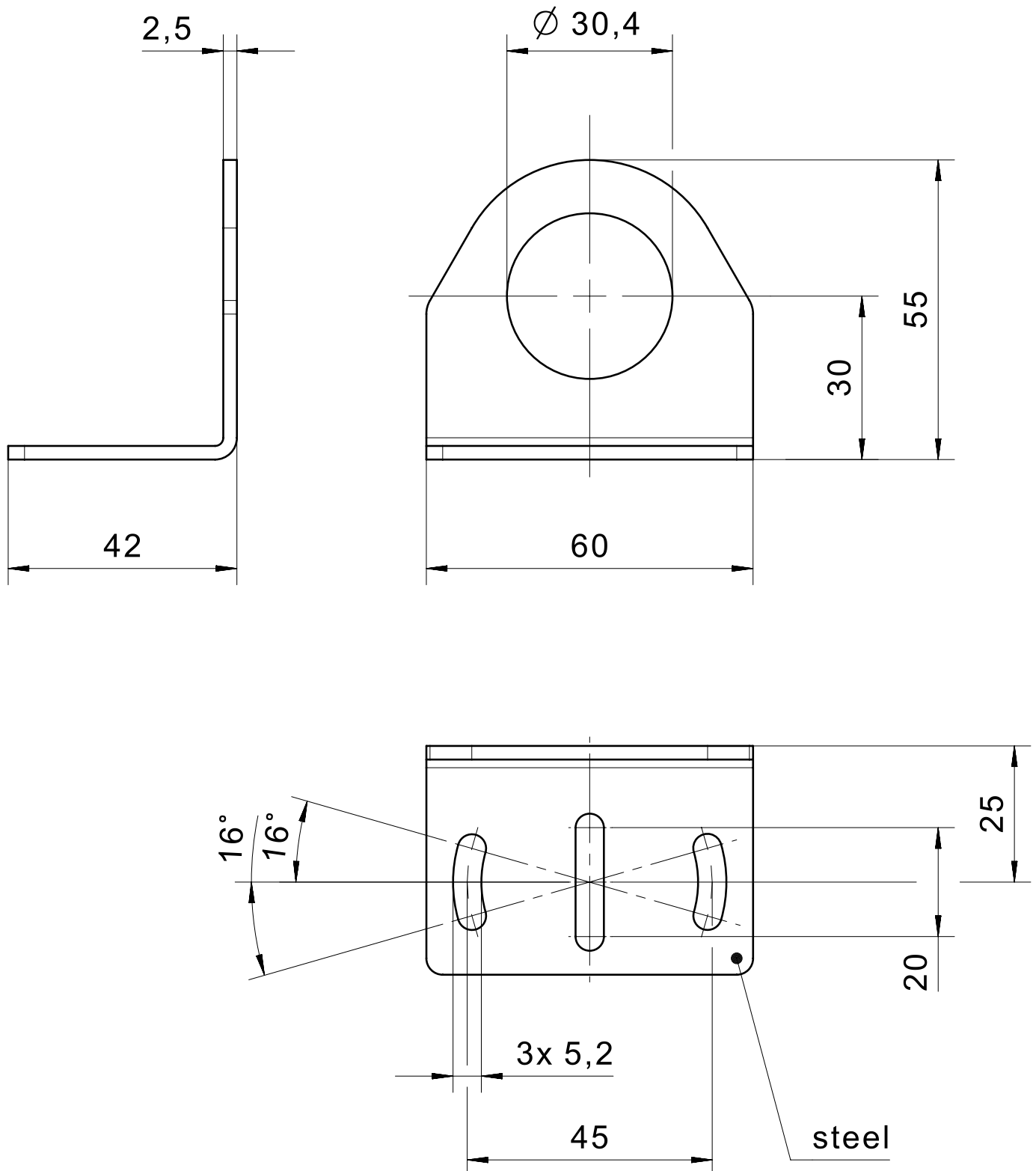
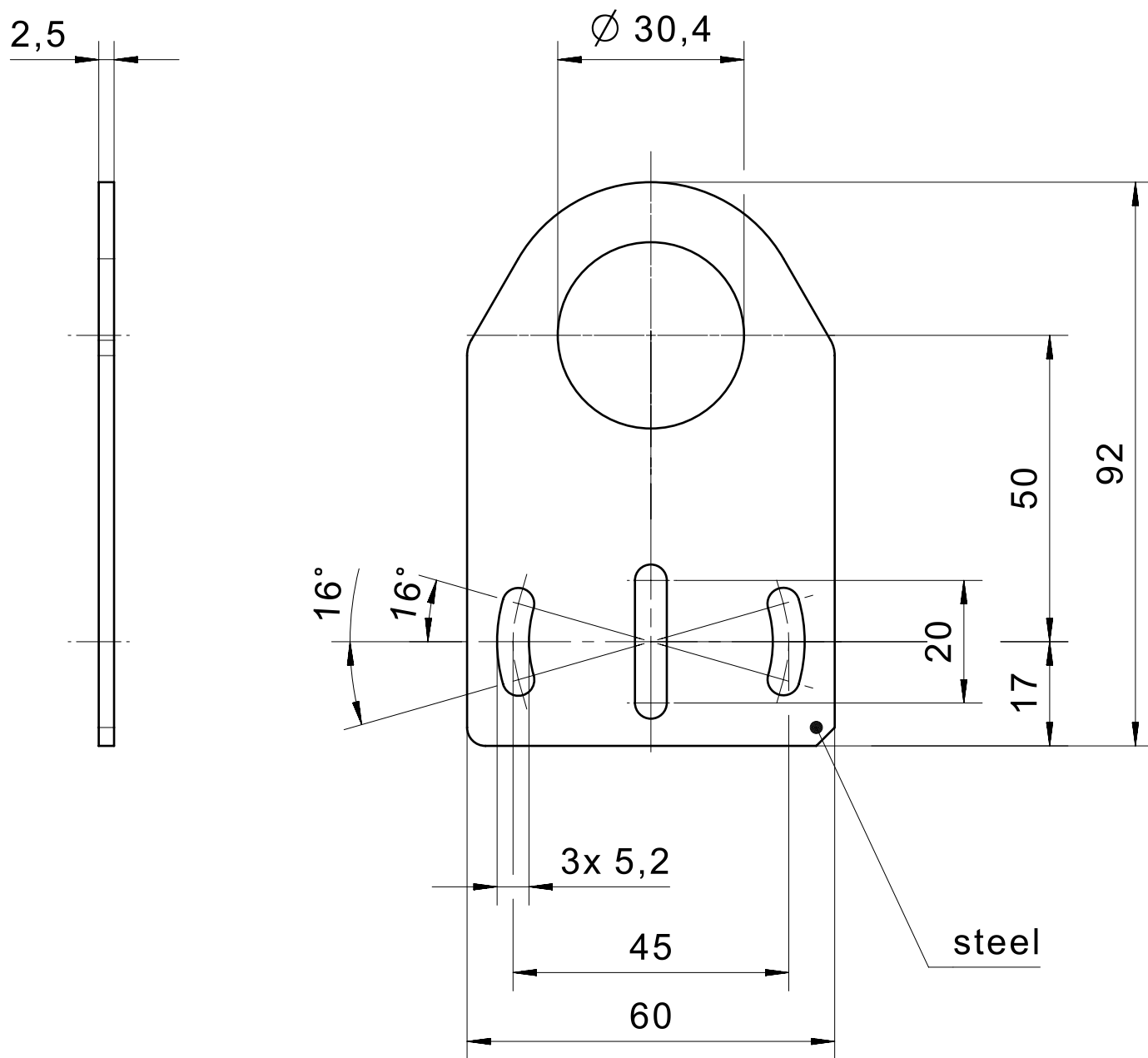


IMAGE 4/4



Product options

IMAGE 1/1

ORDERING KEY

M18VA-01	Mounting aid	M18 sensors (DIN 1.4404)
M18VA-090-01	Mounting brackets	M18 sensors (DIN 1.4404)
M30-01	Mounting aid	M30 sensors
M30-090-01	Mounting brackets	M30 sensors