



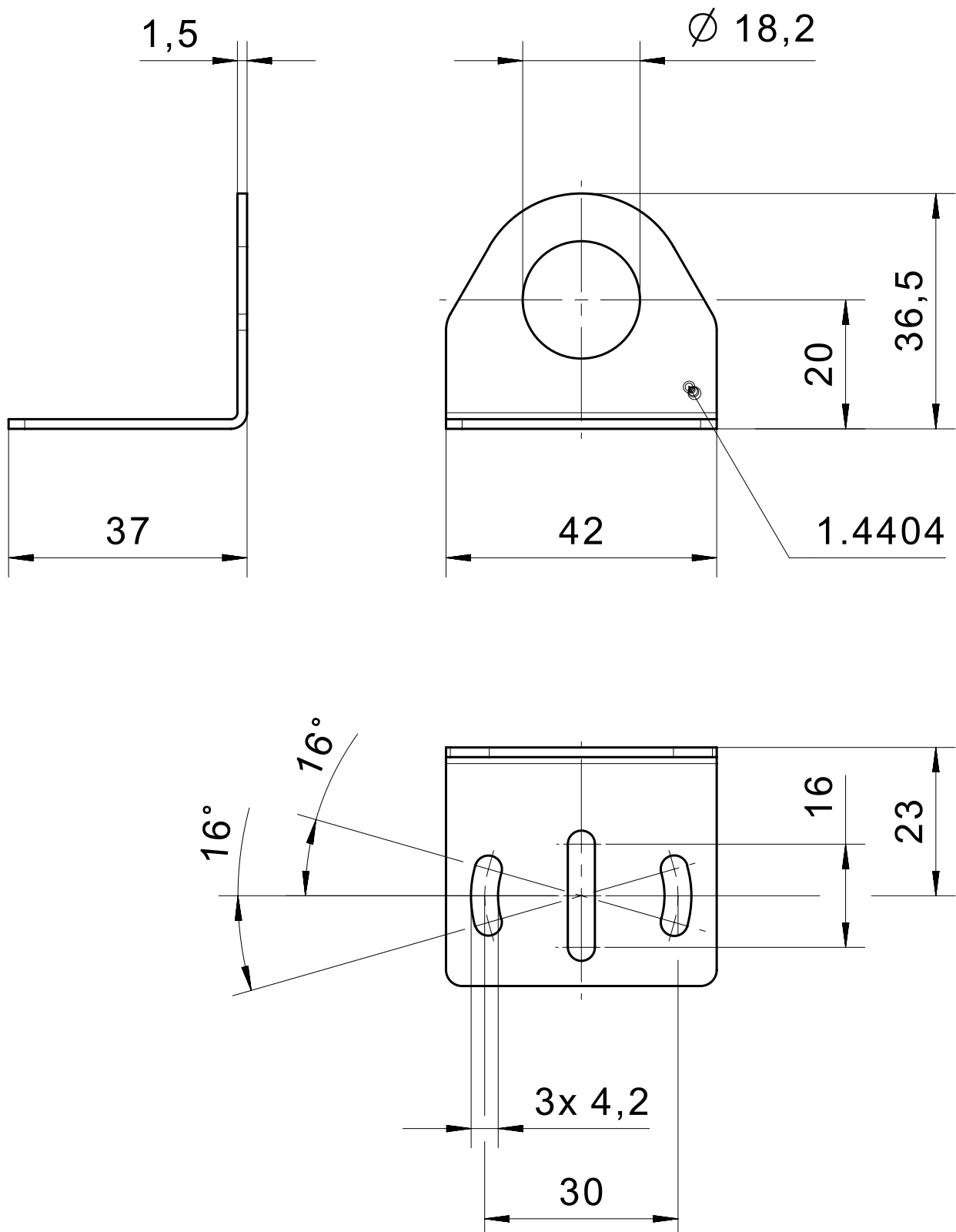
Mounting bracket for sensors

Product characteristics

- Suitable for M18 and M30 sensors
- Different materials and variants suitable for various installation situations

Technical drawing

IMAGE 1/4



Technical drawing of a mechanical part, showing a side view and a top view. The side view (left) shows a thickness of 1,5. The top view (right) shows a rectangular base with a semi-circular top. Dimensions include: overall width 42, overall height 70,5, top semi-circle radius 18,2 (indicated as $\varnothing 18,2$), three vertical slots with width 3,2 (indicated as 3x 3,2), and a central slot with width 30. The distance from the bottom edge to the center of the slots is 14, and the distance from the center of the slots to the top edge is 40. The material specification is 1.4404.

IMAGE 3/4

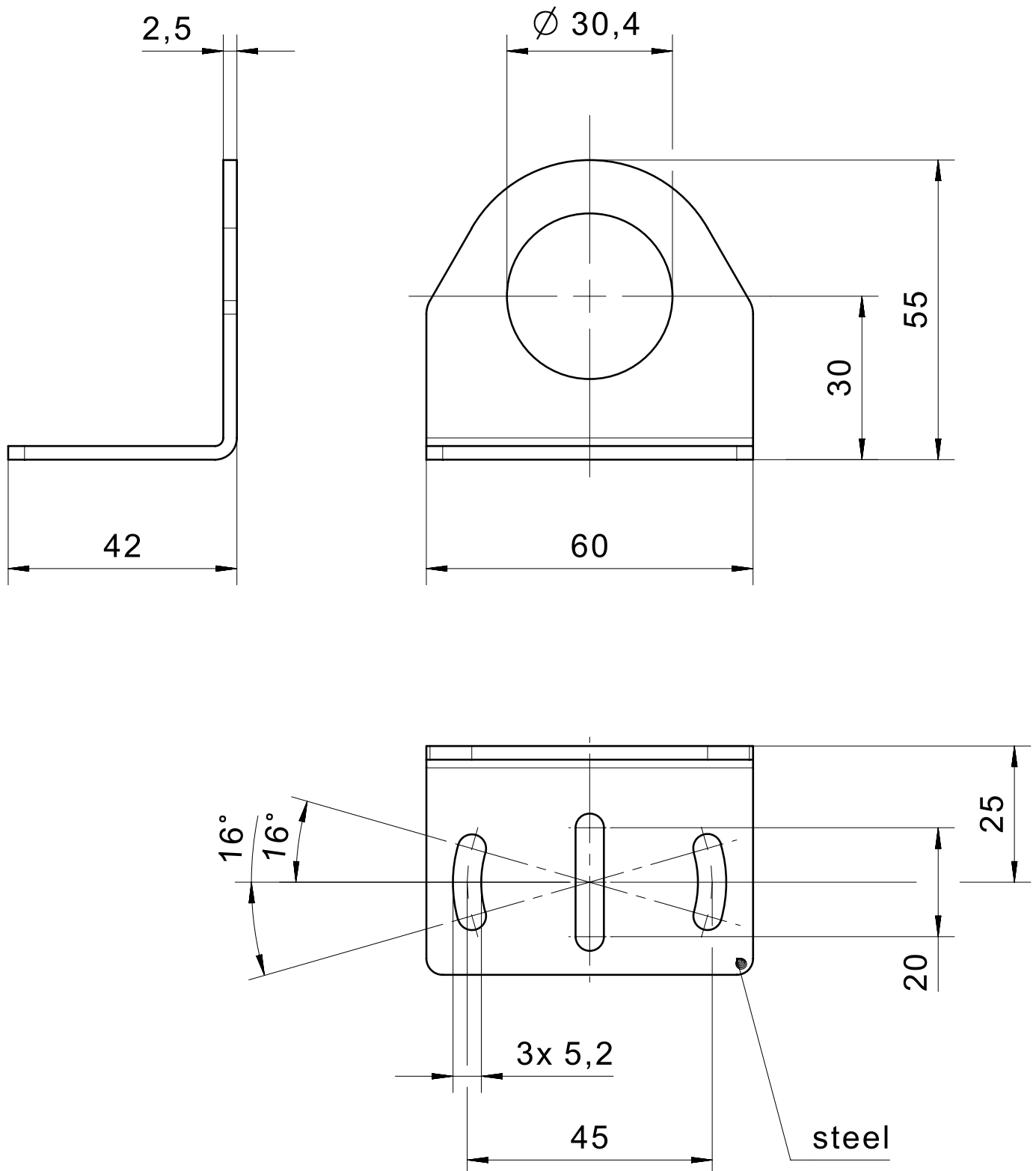
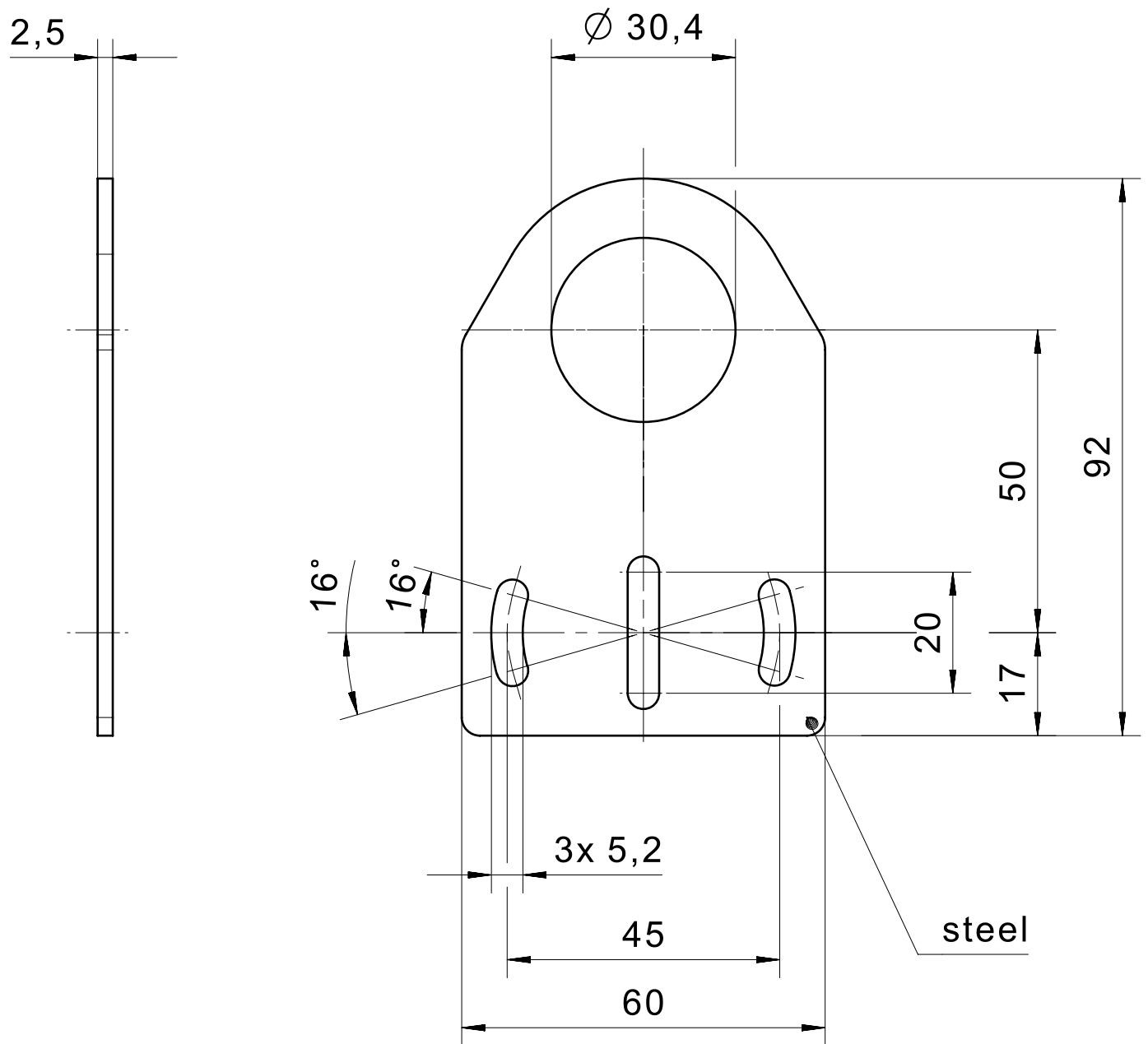


IMAGE 4/4



Product options

IMAGE 1/1

ORDERING KEY

M18VA-01	Mounting aid	M18 sensors (DIN 1.4404)
M18VA-090-01	Mounting brackets	M18 sensors (DIN 1.4404)
M30-01	Mounting aid	M30 sensors
M30-090-01	Mounting brackets	M30 sensors

Article characteristics

Attribute	M18VA-01	M18VA-090-01	M30-01	M30-090-01
Material	Stainless steel 1.4404		Metal	
Dimensions	70.5x42	36.5x42x37	92x60	55x60x42
Model	M18 design		M30 design	