



Miniature float switch 2040.0

elobau miniature float switch 2040.0 with G 1 thread is used for level detection in tank monitoring, water processing and in medical applications or for lubricating oil monitoring.

At elobau, you set the standard. The miniature float switch can be fully customised using our online configurator.

Product characteristics

- Level measurement on reed-contact basis
- Mounting options: G 1
- Material: PVC (other materials on request: PP, PVDF or PA)
- Switching voltage max. 48 V
- Contact form: N.O., N.C., changeover
- One switching point as standard
- Temperature range (PVC) from -10 °C to +65 °C max.
- IP67 protection class

Technical drawing

IMAGE 1/2

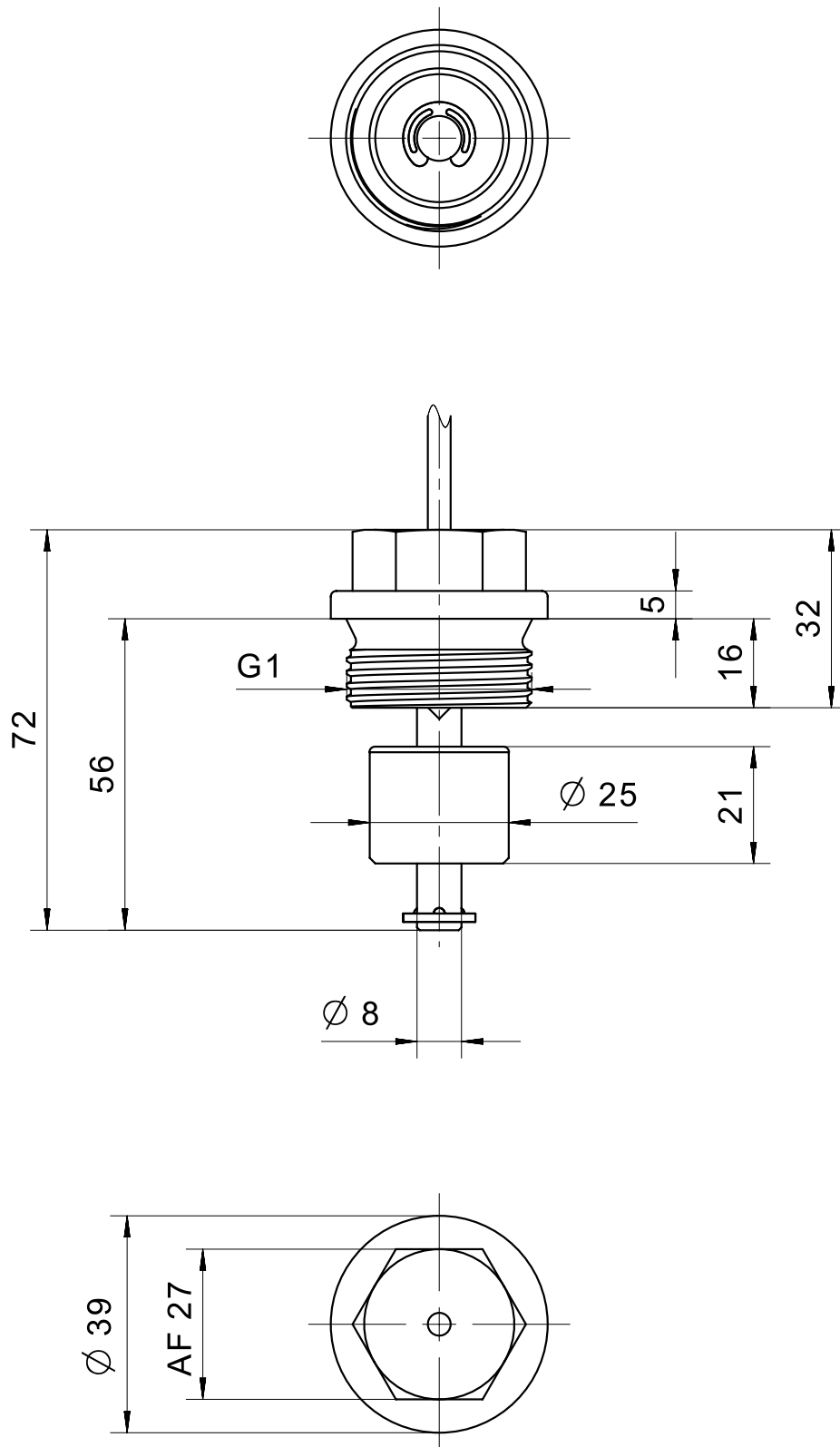
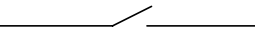
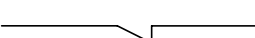


IMAGE 2/2

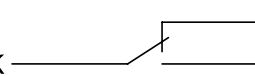
204010..

BN  WH

204020..

BN  WH

204030..

BK  BU
BN

Product options

IMAGE 1/1

ORDERING KEY

2040			Miniature float switch G1
	10		N.O. – material PVC – cable connection 1m
	20		N.C. – material PVC – cable connection 1m
	30		C.O. – material PVC – cable connection 1m
			Other materials (PP, PVDF, PA) on request
			Other available cable lengths
		-3	3 m
		-5	5 m
		-10	10 m
			Other cable materials and cable lengths on request

Article characteristics

Attribute	204010	204020	204030	ED204010	ED204020	ED204030
Max. switching voltage	48 V DC			-		
Max. switching voltage	48 V AC			-		
Max. switching current	0.5 A		0.3 A	-		
Max. switching power	10 W		3 W	-		
Contact form	1A	1B	1C	-		
Output signal	digital			-		
Technology	Reed			-		
Switching point function	Rising level			-		
Change of switching function by turning the float	yes			-		
Recommended minimum density of the medium	0.7 g/cm ³			-		
Float diameter	25 mm			-		
Version	Straight			-		
Housing material	PVC			-		
Float material	PVC			-		
Riser material	PVC			-		
Cable material	PVC			-		
Operating temperature min.	-10 °C			-		
Max. operating temperature	65 °C			-		
Pressure resistance	3 bar			-		
Protection class outside container	IP67 DIN EN 60529			-		
Protection class inside container	IP68 DIN EN 60529			-		
Installation	from outside			-		
Mounting type	Thread			-		
Thread	G 1			-		
Riser diameter	8 mm			-		
Riser length	56 mm			-		
Installation opening	G 1			-		
Torque	20 N m			-		
Connector type	-			-		
Cable length	1 m			-		