



Miniature float switch 2040.0

elobau miniature float switch 2040.0 with G 1 thread is used for level detection in tank monitoring, water processing and in medical applications or for lubricating oil monitoring.

At elobau, you set the standard. The miniature float switch can be fully customised using our online configurator.

Product characteristics

- Level measurement on reed-contact basis
- Mounting options: G 1
- Material: PVC (other materials on request: PP, PVDF or PA)
- Switching voltage max. 48 V
- Contact form: N.O., N.C., changeover
- One switching point as standard
- Temperature range (PVC) from -10 °C to +65 °C max.
- IP67 protection class

Technical drawing

IMAGE 1/2

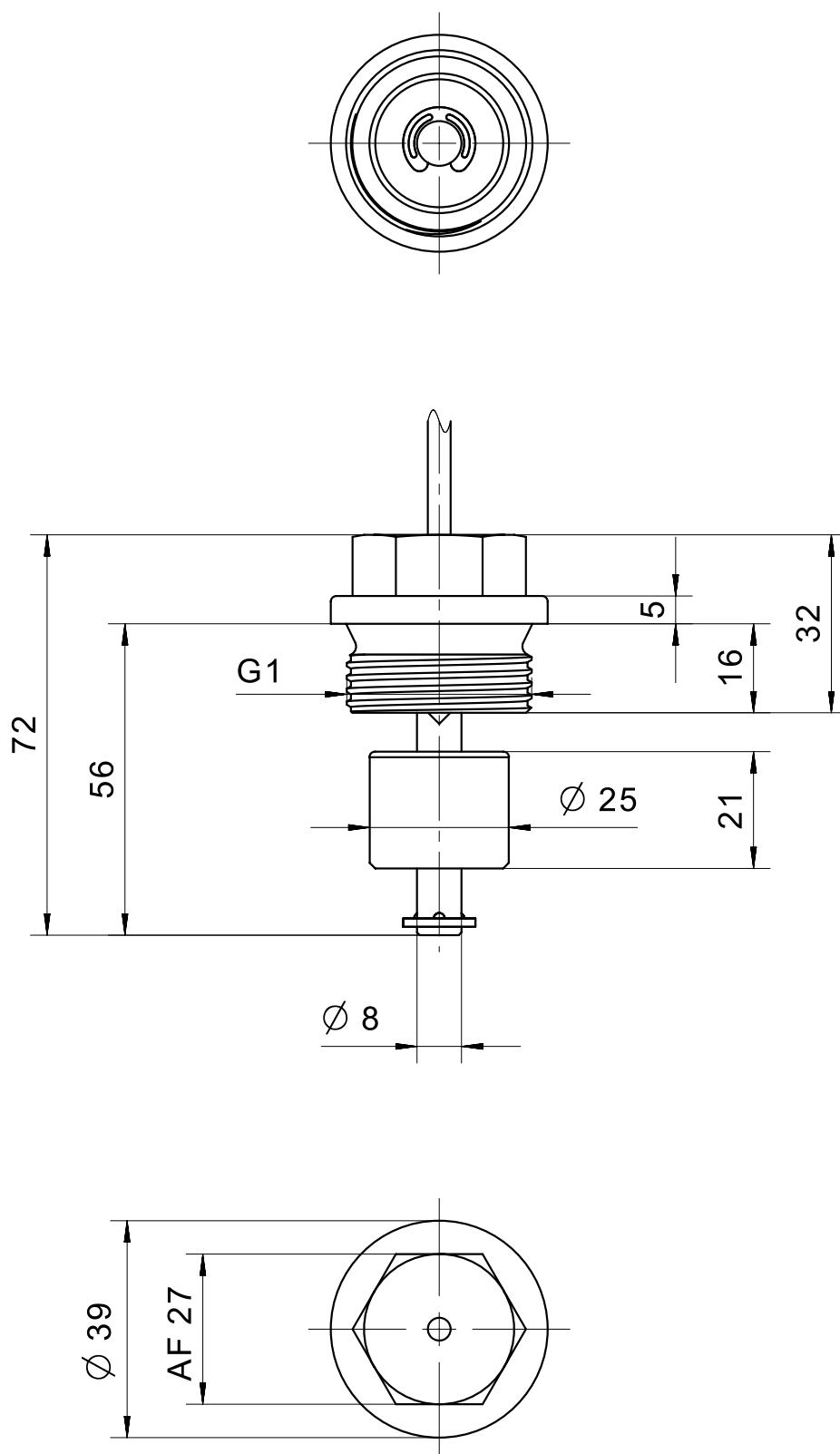


IMAGE 2/2

204010..

BN ———— / ———— WH

204020..

BN ———— \ ———— WH

204030..

BK ———— / ———— BU
BN

Product options

IMAGE 1/1

ORDERING KEY

| 2040 | | | Miniature float switch G1 |
|------|----|-----|--|
| | 10 | | N.O. – material PVC – cable connection 1m |
| | 20 | | N.C. – material PVC – cable connection 1m |
| | 30 | | C.O. – material PVC – cable connection 1m |
| | | | Other materials (PP, PVDF, PA) on request |
| | | | |
| | | | Other available cable lengths |
| | | -3 | 3 m |
| | | -5 | 5 m |
| | | -10 | 10 m |
| | | | Other cable materials and cable lengths on request |

Article characteristics

| Attribute | 204010 | 204020 | 204030 |
|---|-----------------------|--------|--------|
| Max. switching voltage | 48 V DC | | |
| Max. switching voltage | 48 V AC | | |
| Max. switching current | 0.5 A | | 0.3 A |
| Max. switching power | 10 W | | 3 W |
| Contact form | 1A | 1B | 1C |
| Output signal | digital | | |
| Technology | Reed | | |
| Switching point function | Rising level | | |
| Change of switching function by turning the float | yes | | |
| Recommended minimum density of the medium | 0.7 g/cm ³ | | |
| Float diameter | 25 mm | | |
| Version | Straight | | |
| Housing material | PVC | | |
| Float material | PVC | | |
| Riser material | PVC | | |
| Cable material | PVC | | |
| Operating temperature min. | -10 °C | | |
| Max. operating temperature | 65 °C | | |
| Pressure resistance | 3 bar | | |
| Protection class outside container | IP67 DIN EN 60529 | | |
| Protection class inside container | IP68 DIN EN 60529 | | |
| Installation | from outside | | |
| Mounting type | Thread | | |
| Thread | G 1 | | |
| Riser diameter | 8 mm | | |
| Riser length | 56 mm | | |
| Installation opening | G 1 | | |
| Torque | 20 N m | | |
| Connector type | - | | |
| Cable length | 1 m | | |