

## Miniature float switch 2000

elobau miniature float switch 2000.0 with PG 7 thread is frequently used for level detection in medical applications. The compact design and reliable measurement also make this float switch ideal for use in water processing plants or tanks. The miniature float switch is a cost-effective solution that can be fully customised to suit your needs, and is reversible by rotating the float.

At elobau, you set the standard. The miniature float switch can be fully customised using our online configurator.

### Product characteristics

- Level measurement on reed-contact basis
- Mounting options: PG 7 thread
- With lock nut for easy installation
- Material: PVC (other materials on request: PP, PVDF or PA)
- Switching voltage max. 48 V
- Contact form: N.O., N.C., changeover
- One switching point as standard
- Temperature range (PVC) from -10 °C to +65 °C max.
- IP67 protection class

## Technical drawing

IMAGE 1/2

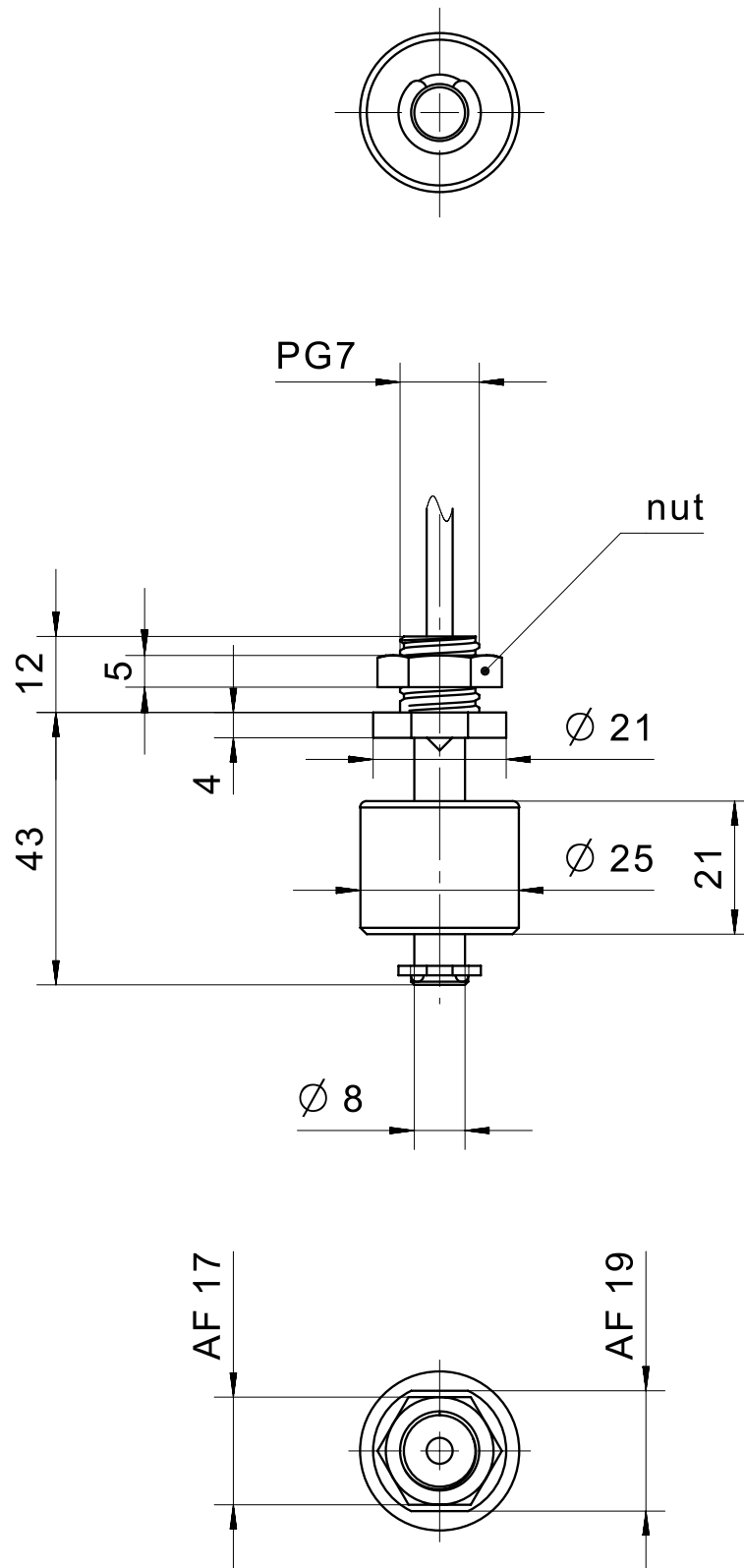
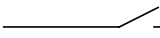
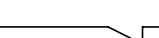


IMAGE 2/2

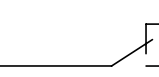
200010..

BN  WH

200020..

BN  WH

200030..

BK  BU  
BN

## Product options

IMAGE 1/1

### ORDERING KEY

2000			Miniature float switch PG7
	10		N.O. – material PVC – cable connection 1m
	20		N.C. – material PVC – cable connection 1m
	30		C.O. – material PVC – cable connection 1m
			Other materials (PP, PVDF, PA) on request
			<b>Other available cable lengths</b>
		-3	3 m
		-5	5 m
		-10	10 m
			Other cable materials and cable lengths on request
<b>Variant:</b>			
	20001206		N.O. – material PP – cable connection 1m, IP68
			<b>Other available cable lengths</b>
		-3	3 m
		-5	5 m
		-10	10 m
			Other cable materials and cable lengths on request

## Article characteristics

Attribute	200010	200020	200030	ED200010	ED200020	ED200030
Max. switching voltage	48 V DC			-		
Max. switching voltage	48 V AC			-		
Max. switching current	0.5 A		0.3 A	-		
Max. switching power	10 W		3 W	-		
Contact form	1A	1B	1C	-		
Output signal	digital			-		
Technology	Reed			-		
Change of switching function by turning the float	yes			-		
Switching point function	Rising level			-		
Recommended minimum density of the medium	0.7 g/cm <sup>3</sup>			-		
Float diameter	25 mm			-		
Version	Straight			-		
Housing material	PVC			-		
Float material	PVC			-		
Riser material	PVC			-		
Cable material	PVC			-		
Protection class outside container	IP67 DIN EN 60529			-		
Protection class inside container	IP68 DIN EN 60529			-		
Operating temperature min.	-10 °C			-		
Max. operating temperature	65 °C			-		
Pressure resistance	3 bar			-		
Installation	from inside			-		
Mounting type	Thread			-		
Thread	PG7			-		
Riser diameter	8 mm			-		
Riser length	43 mm			-		
Installation opening	PG7			-		
Torque	2 N m			-		
Connector type	-			-		
Cable length	1 m			-		