



Anti-tamper mounting screws 35104

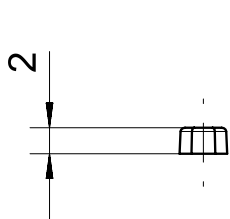
Product characteristics

- Prevents easy removal of safety sensors and actuators

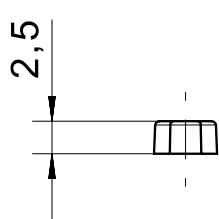
Technical drawing

IMAGE 1/1

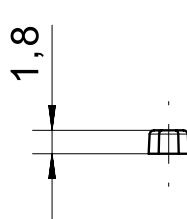
351040



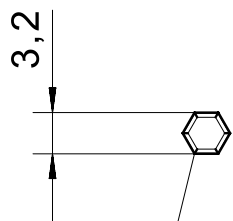
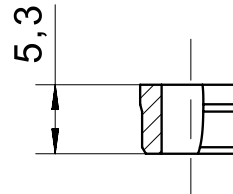
351041



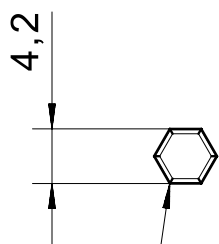
351042



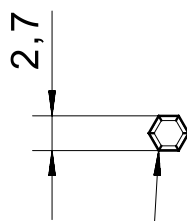
351045



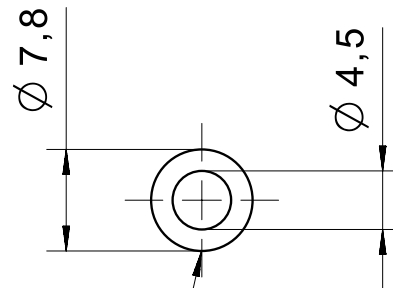
Pa6



Pa6



Pa6



PBT

Product options

IMAGE 1/1

ORDERING KEY

| 351 | | Anti-tamper mounting screws |
|-----|-----|-----------------------------|
| | 040 | Cylinder screws M4 |
| | 041 | Cylinder screws M5 |
| | 042 | Countersunk screws M4 |
| | 045 | Mounting sleeve |