



Anti-tamper mounting screws 35104

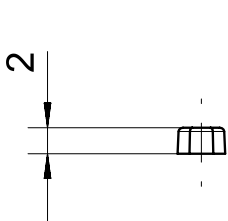
Product characteristics

- Prevents easy removal of safety sensors and actuators

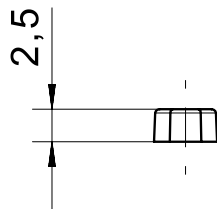
Technical drawing

IMAGE 1/1

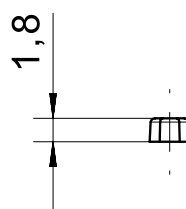
351040



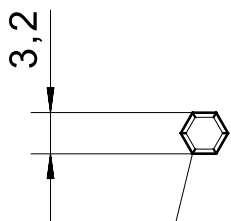
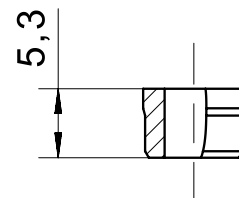
351041



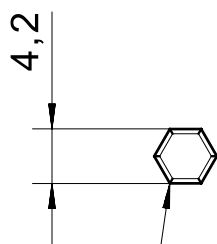
351042



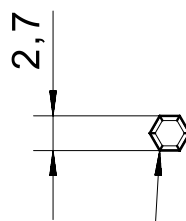
351045



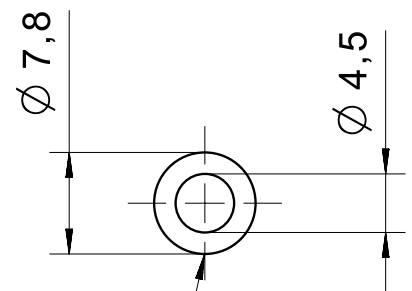
Pa6



Pa6



Pa6



PBT

Product options

IMAGE 1/1

ORDERING KEY

351		Anti-tamper mounting screws
	040	Cylinder screws M4
	041	Cylinder screws M5
	042	Countersunk screws M4
	045	Mounting sleeve