

## Anti-tamper mounting screws 35104

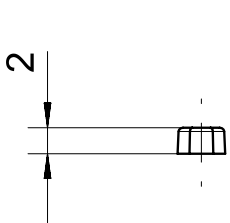
### Product characteristics

- Prevents easy removal of safety sensors and actuators

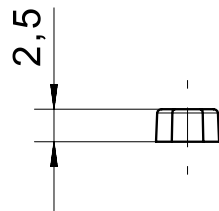
### Technical drawing

IMAGE 1/1

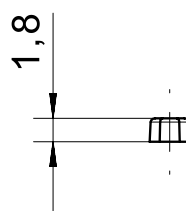
351040



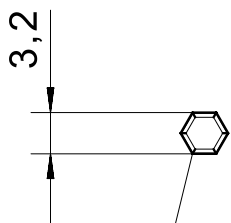
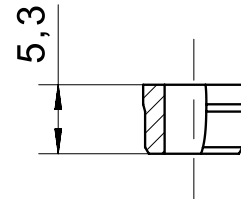
351041



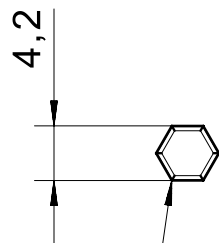
351042



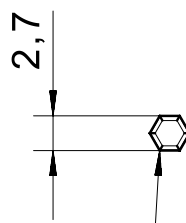
351045



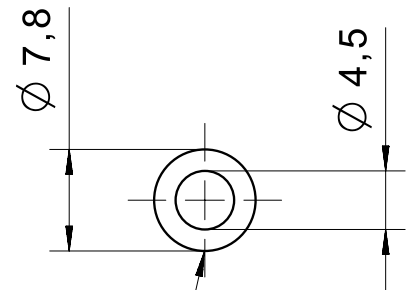
Pa6



Pa6



Pa6



PBT

**Product options**

IMAGE 1/1

**ORDERING KEY**

|            |            |                                    |
|------------|------------|------------------------------------|
| <b>351</b> |            | <b>Anti-tamper mounting screws</b> |
|            | <b>040</b> | <b>Cylinder screws M4</b>          |
|            | <b>041</b> | <b>Cylinder screws M5</b>          |
|            | <b>042</b> | <b>Countersunk screws M4</b>       |
|            | <b>045</b> | <b>Mounting sleeve</b>             |