



Safety interlock ZM

The small dimensions of the ZM design enable mounting even in confined installation conditions. Thanks to the simple external shape, the robust safety interlock is easy to mount.

Product characteristics

- 7 possible approach directions on each side of the actuator head
- Supporting release enables the unlocking of the guard locking function in the event of a fault
- Matching cable gland 354000 for simple installation
- Selection of ZB actuators suitable for any application

Accessories available as an option:

Insertion funnel, bolt, screw connection and deadbolt

Actuator for safety interlocks:

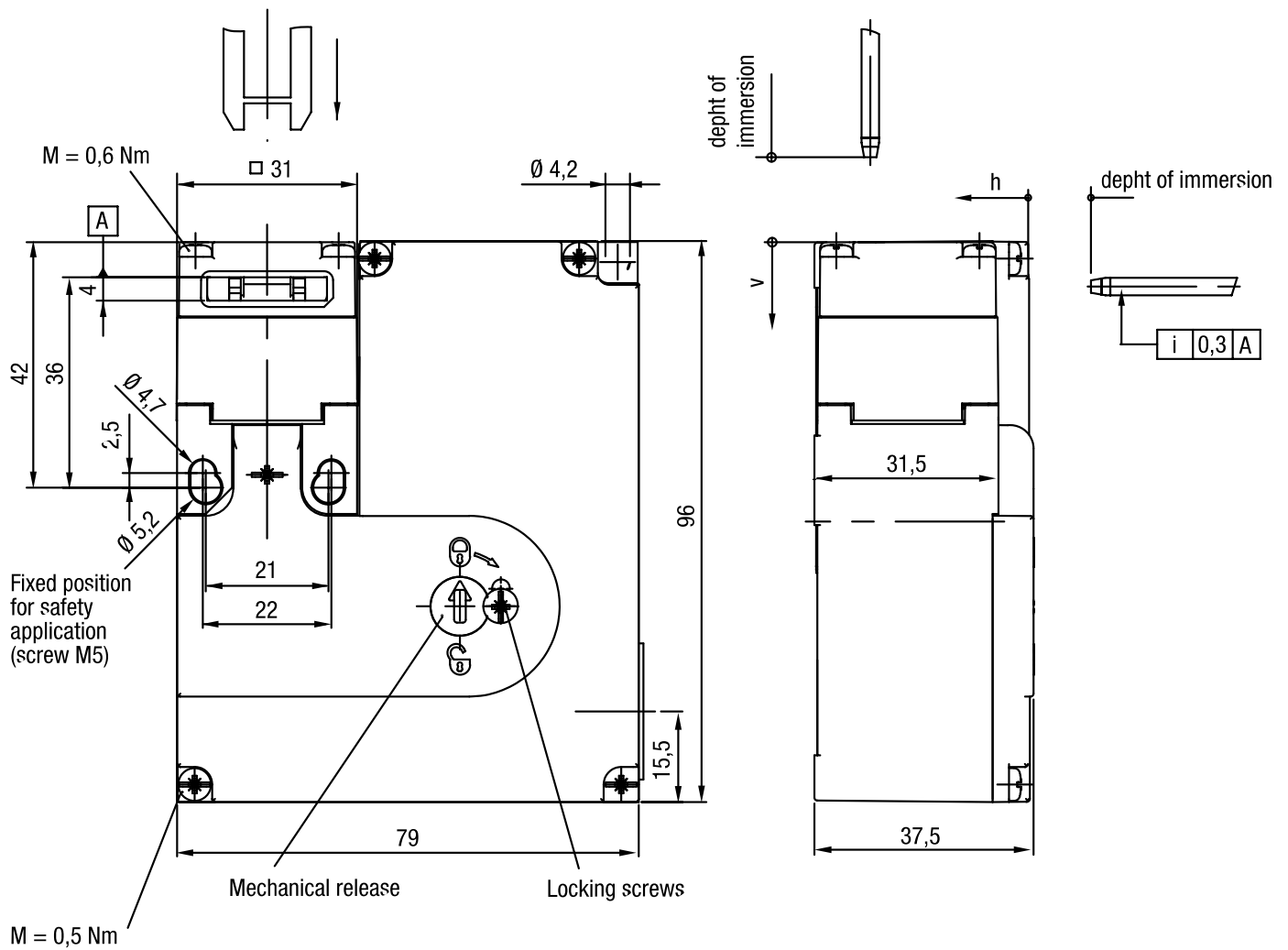
ZBG5M straight without rubber bushing ($R \geq 300\text{mm}$)
ZBG5G straight with rubber bushing ($R \geq 300\text{mm}$)
ZBA5G angled with rubber bushing ($R \geq 300\text{mm}$)
ZBG5GE straight with rubber bushing (with insertion funnel, overrun 5 mm)
ZBA5GE angled with rubber bushing (with insertion funnel, overrun 5 mm)

Hinged actuator for safety interlocks:

ZBU5M hinged actuator, approach direction top / bottom ($R \geq 200\text{mm}$)
ZBL5M hinged actuator, approach direction left / right ($R \geq 100\text{mm}$)
ZBU5ME hinged actuator, approach direction top / bottom (with insertion funnel, overrun 5 mm, $R \geq 200\text{mm}$)
ZBL5ME hinged actuator, approach direction left / right (with insertion funnel, overrun 5 mm, $R \geq 100\text{mm}$)

Technical drawing

IMAGE 1/3



Technical drawing of a mechanical part, likely a bracket or support, showing dimensions and assembly details.

Dimensions:

- Overall width: 20,5
- Overall height: 16
- Distance from top edge to first hole center: 9
- Distance between hole centers: 4
- Distance from right edge to first hole center: 10,5
- Distance from right edge to second hole center: 15,5

Assembly Details:

- Four screws (M4) are used for mounting, indicated by the text "Protection against twisting for screw M4".
- A screw (M 20 x 1,5) is used for adjustment, indicated by the text "M 20 x 1,5".
- A dimension of 0,3 B is indicated for a specific feature.

Product options

IMAGE 1/1

ORDERING KEY

ZM				Safety interlock
	R			Spring force locked / closed-circuit principle
	A			Magnetically locked / open-circuit principle
		1030		24 V AC/DC operating voltage for magnet / 3 force-guided N.C.
		1120		24 V AC/DC operating voltage for magnet / 1 N.O. / 2 force-guided N.C.
			V	Approach direction front

Article characteristics

Attribute	ZMA1030V	ZMA1120V	ZMR1030V	ZMR1120V	EDZMA1030V	EDZMA1120V ▶
Min. switching voltage	24 V DC					-
Min. switching voltage	24 V AC					-
Min. switching current	1 A					-
Conv. thermal continuous current I _{th}	4 A					-
Utilization category	AC-15 4A 230V / DC-13 4A 24V					-
Rated insulation voltage (U _i)	250 V					-
Rated impulse withstand voltage (U _{imp})	2500 V					-
Magnet operating voltage +10%/-15%	24 V AC/DC					-
Power consumption	6 W					-
Power-on time ED	100 %					-
Open-circuit principle	yes		-			
Closed-circuit principle	-		yes			-
Switching principle	Slow-action switch					-
Short-circuit protection in accordance with IEC 60269-1 (fuse)	4 A gG					-
Conditional short circuit current	100 A					-
Pollution degree	3					-
B10d acc. to EN ISO 13849-1	2000000					-
Type acc. to EN ISO 14119	2					-
Mission time in years	20 a					-
Service life, mechanical (Cycles)	1 x 10 ⁶					-
Dimensions	37,5 x 79 x 96 mm (H/B/T)					-
Emergency release present	no					-
Auxiliary unlocking device present	yes					-
Emergency unblocking present	no					-
Locking force F _{max}	2000 N					-
Locking force F _{zH}	1500 N					-
Immersion depth	24.5 mm					-

Attribute	ZMA1030V	ZMA1120V	ZMR1030V	ZMR1120V	EDZMA1030V	EDZMA1120V ▶
Overrun max.	5 mm				-	-
Number of N.C. door position	0				-	-
Number of N.O. door position	0	1	0	1	-	-
Number of interlocks guard locking	1				-	-
Number of N.O. guard locking	0				-	-
Number of interlocks door position	2	1	2	1	-	-
Operating speed max.	20 m/min				-	-
Actuation frequency	1200 1/h				-	-
Actuation force/attraction force/retention force	35 / 30 / 20 N				-	-
Housing material	Glasfaserverstaerkter Thermoplast				-	-
Housing colour	Gehaeuse schwarz / Deckel gelb				-	-
Contact material	Silberlegierung hauchvergoldet				-	-
Protection class	IP67 DIN EN 60529				-	-
Operating temperature min.	-20 °C				-	-
Max. operating temperature	50 °C				-	-
Min. storage temperature	-20 °C				-	-
Max. storage temperature	50 °C				-	-
Mounting type	screwed				-	-
Weight	500 g				-	-
Installation	arbitrary				-	-
Connection type	3 x M20 x 1,5 Kabelverschraubung				-	-
Min. connection cross section	0.34 mm²				-	-
Max. connection cross section	1.5 mm²				-	-
Certified in accordance with	EN ISO 60947-5-1 GS-ET-19 UL 508 / CSA 22.2				-	-
CE label	yes				-	-

Attribute	EDZMR1030V	EDZMR1120V
Min. switching voltage	-	-
Min. switching voltage	-	-
Min. switching current	-	-
Conv. thermal continuous current I _{th}	-	-
Utilization category	-	-
Rated insulation voltage (U _i)	-	-
Rated impulse withstand voltage (U _{imp})	-	-
Magnet operating voltage +10%/-15%	-	-
Power consumption	-	-
Power-on time ED	-	-
Open-circuit principle	-	-
Closed-circuit principle	-	-
Switching principle	-	-
Short-circuit protection in accordance with IEC 60269-1 (fuse)	-	-
Conditional short circuit current	-	-
Pollution degree	-	-
B10d acc. to EN ISO 13849-1	-	-
Type acc. to EN ISO 14119	-	-
Mission time in years	-	-
Service life, mechanical (Cycles)	-	-
Dimensions	-	-
Emergency release present	-	-
Auxiliary unlocking device present	-	-
Emergency unblocking present	-	-
Locking force F _{max}	-	-
Locking force F _{zH}	-	-
Immersion depth	-	-
Overrun max.	-	-
Number of N.C. door position	-	-

Attribute	EDZMR1030V	EDZMR1120V
Number of N.O. door position	-	-
Number of interlocks guard locking	-	-
Number of N.O. guard locking	-	-
Number of interlocks door position	-	-
Operating speed max.	-	-
Actuation frequency	-	-
Actuation force/attraction force/retention force	-	-
Housing material	-	-
Housing colour	-	-
Contact material	-	-
Protection class	-	-
Operating temperature min.	-	-
Max. operating temperature	-	-
Min. storage temperature	-	-
Max. storage temperature	-	-
Mounting type	-	-
Weight	-	-
Installation	-	-
Connection type	-	-
Min. connection cross section	-	-
Max. connection cross section	-	-
Certified in accordance with	-	-
CE label	-	-