



Safety sensor 153

Safety doors, bonnets or covers can be safely monitored with the non-contact and therefore wear-free sensors in combination with the matching elobau safety evaluation unit. The magnetic safety sensors are particularly convincing for monitoring safety doors on food processing machines due to their concealed installation behind stainless steel.

The high number of variants at elobau offers solutions for almost all applications.

Technical specification

- Small standard design for installation in confined spaces
- Sensors in standard or reinforced version for Switching distance to suit the application
- Variable connection through cable outlet and M8 housing connector
- Simple diagnosis through optional LED and control contact

IMAGE 2/3

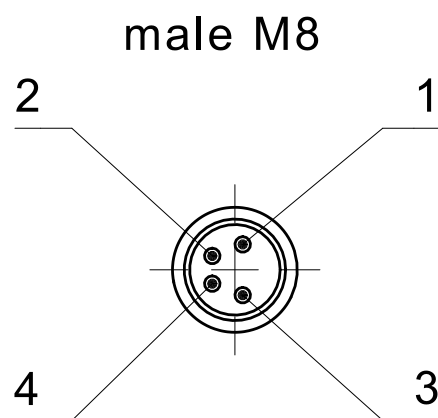
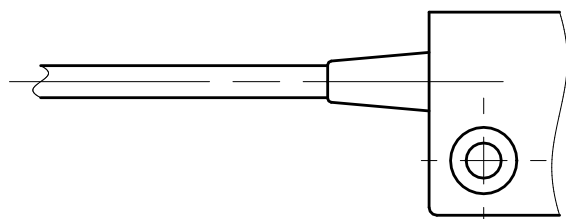
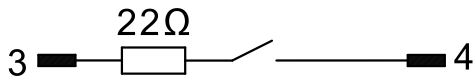
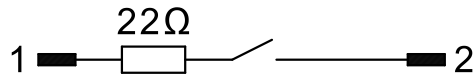
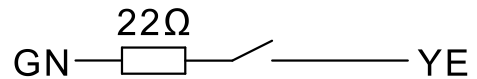
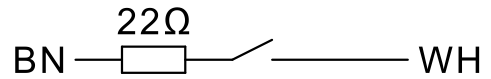


IMAGE 3/3

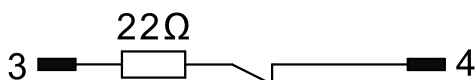
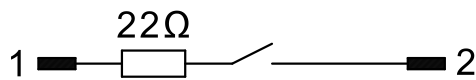
153V62A0D, 153V62SHD



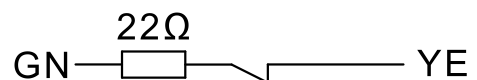
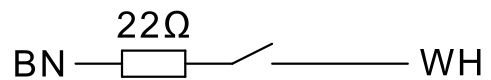
153V62, 153V62S



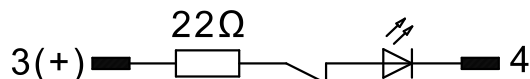
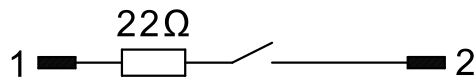
153270A0D



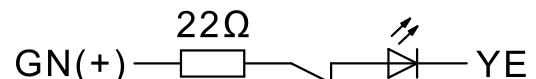
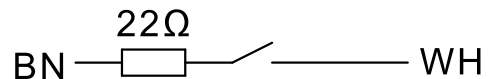
153270, 153270S



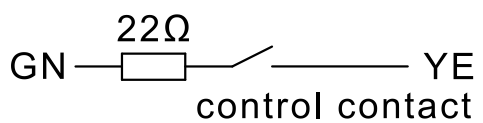
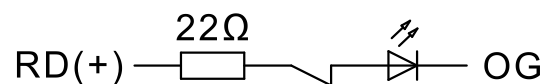
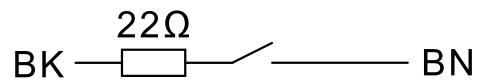
153270A0E, 153270SA0D



153270AA, 153270SA

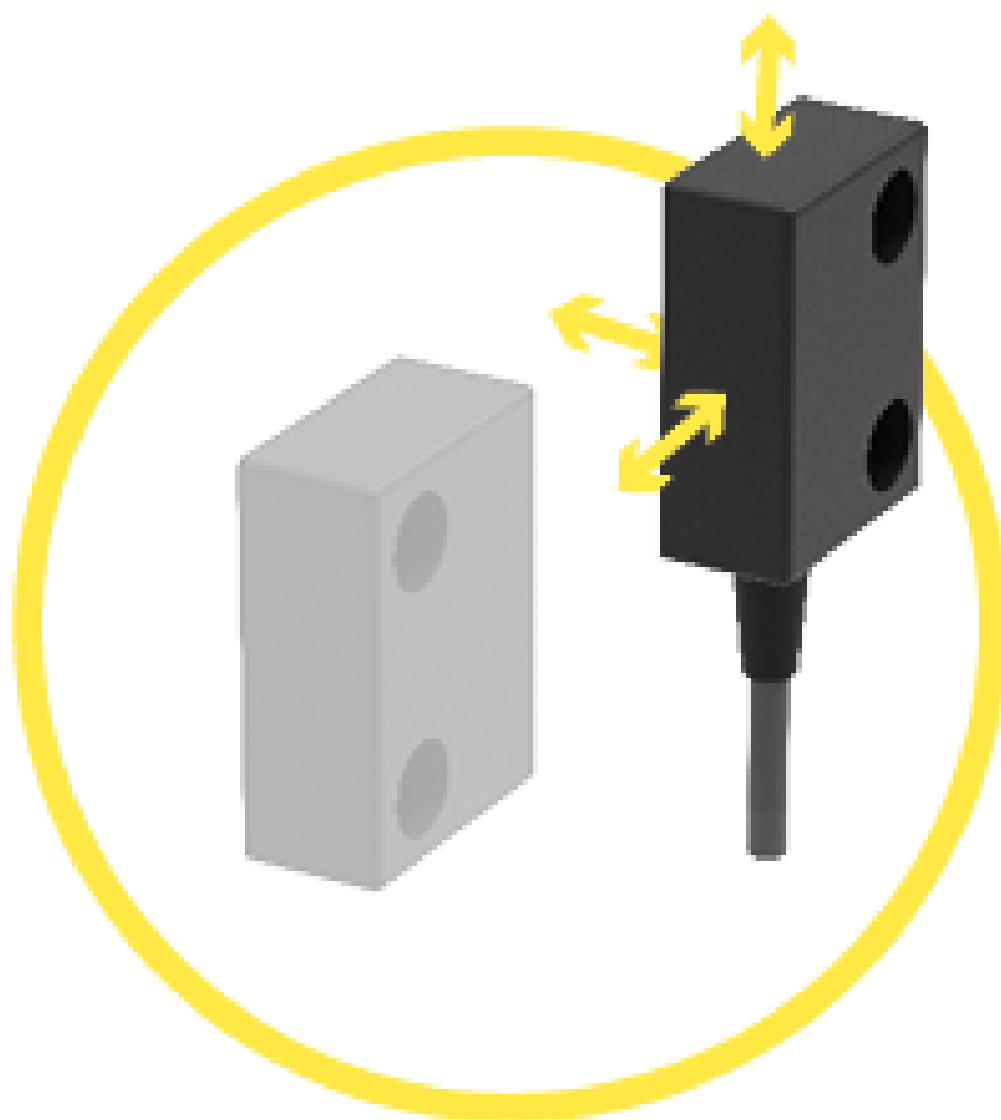


153570AA



Product options

IMAGE 1/3



Suitable for front, side and 90° actuation. Operating distance (Sao) from 4 to 10 mm. Assured switch-off distance (Sar) from 12 to 22 mm.

IMAGE 2/3

MATCHING ACTUATORS

| Actuators | Actuation direction | 153V62 | | | 153V62S | | | 153270 | | | 153270S | | |
|-------------------|---------------------|--------------------|-----------------|-----------------|--------------------|-----------------|-----------------|--------------------|-----------------|-----------------|--------------------|-----------------|-----------------|
| | | S _{0 min} | S _{ao} | S _{ar} | S _{0 min} | S _{ao} | S _{ar} | S _{0 min} | S _{ao} | S _{ar} | S _{0 min} | S _{ao} | S _{ar} |
| 30428112B | front | 0,5 | 3 | 10 | - | - | - | - | - | - | - | - | - |
| 30428112BS | | - | - | - | 0,5 | 8 | 17 | - | - | - | - | - | - |
| 30428112A | | - | - | - | - | - | - | 0,5 | 3 | 10 | - | - | - |
| 30428112S | | - | - | - | - | - | - | - | - | - | 0,5 | 9 | 21 |

S_{0 min} = minimum switching distance (mm), S_{ao} = operating distance (mm), S_{ar} = assured switch-off distance (mm)

IMAGE 3/3

ORDERING KEY

| | 153270 153270S | 153270A0E 153270SA0D | 153270A0D | 153270AA 153270SA |
|--|----------------|----------------------|-----------|-------------------|
| M8× connector, 4-pin | | X | X | |
| Connection cable 1m* | X | | | X |
| N.O./N.O. contacts | | | | |
| N.O./N.C. contacts | X | X | X | X |
| Additional N.O. control contact | | | | |
| LED in series to N.C. | | X | | X |
| Coded | X | X | X | X |
| Uncoded | | | | |

| | 153V62 153V62S | 153V62A0D 153V62SHD | 153570AA |
|--|----------------|---------------------|----------|
| M8× connector, 4-pin | | X | |
| Connection cable 1m* | X | | X |
| N.O./N.O. contacts | X | X | |
| N.O./N.C. contacts | | | X |
| Additional N.O. control contact | | | X |
| LED in series to N.C. | | | X |
| Coded | X | X | X |
| Uncoded | | | |

Article characteristics

| Attribute | 153270 | 153270AA | 153270AOE | 153270S | 153270SA0D | 153V62 ▶ |
|-------------------------------------|------------------|-----------------|-----------|------------------|-----------------|----------|
| Housing colour | schwarz | | | | | |
| Cable type | LIYY 4 x 0,25 mm | | - | LIYY 4 x 0,25 mm | - | |
| Cable colour | - | | | | | |
| Detent present | no | | | | | |
| Installation | - | | | | | |
| Certified in accordance with | ETL | | | | | |
| CE label | yes | | | | | |
| Contact form | NO/NC | | | | | |
| Min. switching voltage | 0 V DC | 19.2 V DC | | | | |
| Max. switching voltage | 28.8 V DC | | | | | |
| Max. switching current | 0.1 A | | | | | |
| Max. switching current with LED | - | 0.01 A | | - | 0.01 A | |
| Max. switching power | - | | | | | |
| Switching frequency | 5 Hz | | | | | |
| Assured switching distance (Sao) | 1 mm | | | 8.5 mm | 9 mm | 3 mm |
| Assured switch-off distance (Sar) | 13 mm | 16 mm | | 21 mm | | 10 mm |
| Minimum switching distance (S0 min) | 0.5 mm | | | | | |
| LED display | No | single-coloured | | No | single-coloured | |
| Actuation | front | | | | | |
| Switching principle | magnetic | | | | | |
| Series resistor | 22 Ohm | | | | | |
| Technology | Reed | | | | | |
| Min. switching current | 0 A | - | | | | |
| Coding acc. to EN ISO 14119 | Low | | | | | |
| B10d acc. to EN ISO 13849-1 | 20000000 | | | | | |
| Type acc. to EN ISO 14119 | 4 | | | | | |
| Mission time in years | 20 a | | | | | |
| Structure acc. to EN ISO 13849-1 | Two-channel | | | | | |
| Housing design | cuboid | | | | | |

| Attribute | 153270 | 153270AA | 153270AOE | 153270S | 153270SA0D | 153V62 ▶ |
|---|-----------------------|----------|--------------|-----------------------|------------|--------------|
| Dimensions | 36x26x13 | | | | | |
| Minimum installation distance (between two sensors) | - | | | | | |
| cannot be mounted flush | yes | | | | | |
| Housing material | PBT | | | | | |
| Cable material | PVC | | - | PVC | | - |
| Protection class | IP67 DIN EN 60529 | | | | | |
| Protection class, connector | - | | | | | |
| Operating temperature min. | -10 °C | | | -25 °C | | |
| Max. operating temperature | 75 °C | | | | | |
| Min. cable temperature range, moving | - | | | | | |
| Max. cable temperature range, moving | - | | | | | |
| Min. cable temperature range, fixed installation | - | | | | | |
| Max. cable temperature range, fixed installation | - | | | | | |
| Min. storage temperature | -10 °C | | | -25 °C | | |
| Max. storage temperature | 75 °C | | | | | |
| Mounting type | screwed from above | | | | | |
| Possible actuators | 30428112A , 30428102A | | | 30428112S , 30428102S | | |
| Installation opening | 4.5mm | | | | | |
| Weight | - | | | | | |
| Connector type | - | | M8x1 4-polig | - | | M8x1 4-polig |
| Cable length | 1 m | | - | 1 m | | - |
| Number of strands | 4 | | - | 4 | | - |
| Wire cross section | 0.25 mm² | | - | 0.25 mm² | | - |

| Attribute | 153270SA | 153V62A0D | 153V62SHD | 153270A0D | 153V62S | 153570AA ▶ |
|-------------------------------------|------------------|-----------|-----------|-----------|------------------|----------------------------|
| Housing colour | schwarz | | | | | |
| Cable type | LIYY 4 x 0,25 mm | - | | | LIYY 4 x 0,25 mm | LiYY 6x0,22 (AWG 24) |
| Cable colour | - | | | | | schwarz |
| Detent present | no | | | | | |
| Installation | - | | | | | arbitrary |
| Certified in accordance with | ETL | CE | ETL | | | CE |
| CE label | yes | | | | | |
| Contact form | NO/NC | NO/NO | | NO/NC | NO/NO | NO/NC/NO (Kontrollkontakt) |
| Min. switching voltage | 19.2 V DC | | | | | |
| Max. switching voltage | 28.8 V DC | | | | | |
| Max. switching current | 0.1 A | | | | | |
| Max. switching current with LED | 0.01 A | - | | | | 0.01 A |
| Max. switching power | - | | | | | 3 W |
| Switching frequency | - | | 5 Hz | | - | |
| Assured switching distance (Sao) | 9 mm | 3 mm | 8 mm | 1 mm | 8 mm | 4 mm |
| Assured switch-off distance (Sar) | 21 mm | 11 mm | 17 mm | 13 mm | 17 mm | 16 mm |
| Minimum switching distance (S0 min) | 0.5 mm | | | | | |
| LED display | single-coloured | No | | | | single-coloured |
| Actuation | front | | | | | |
| Switching principle | magnetic | | | | | |
| Series resistor | 22 Ohm | | | | | |
| Technology | Reed | | | | | |
| Min. switching current | - | | | | | |
| Coding acc. to EN ISO 14119 | Low | | | | | |
| B10d acc. to EN ISO 13849-1 | 20000000 | | | | | |
| Type acc. to EN ISO 14119 | 4 | | | | | |
| Mission time in years | 20 a | | | | | |
| Structure acc. to EN ISO 13849-1 | Two-channel | | | | | |
| Housing design | cuboid | | - | cuboid | | |

| Attribute | 153270SA | 153V62A0D | 153V62SHD | 153270A0D | 153V62S | 153570AA ▶ |
|---|--------------------|----------------------|-------------------------|-------------------|-------------------------|------------|
| Dimensions | 36x26x13 | | | | | |
| Minimum installation distance (between two sensors) | - | | | | | 50 mm |
| cannot be mounted flush | yes | | | | | |
| Housing material | PBT | | | | | |
| Cable material | PVC | - | | | PVC | |
| Protection class | IP67 DIN EN 60529 | | | | | |
| Protection class, connector | - | | | IP65 DIN EN 60529 | - | |
| Operating temperature min. | -25 °C | | | -10 °C | - | -25 °C |
| Max. operating temperature | 75 °C | | | | - | 100 °C |
| Min. cable temperature range, moving | - | | | | | -10 °C |
| Max. cable temperature range, moving | - | | | | | 105 °C |
| Min. cable temperature range, fixed installation | - | | | | | -30 °C |
| Max. cable temperature range, fixed installation | - | | | | | 105 °C |
| Min. storage temperature | -25 °C | | | -10 °C | - | |
| Max. storage temperature | 75 °C | | | | - | |
| Mounting type | screwed from above | | | | | |
| Possible actuators | 30428112S | 30428112B, 30428102B | 30428102BS , 30428112BS | 30428112A | 30428102BS , 30428112BS | 30428112A |
| Installation opening | 4.5mm | | | | | |
| Weight | - | | 56 g | - | | |
| Connector type | - | M8x1 4-polig | | | - | |
| Cable length | 1 m | - | | | 1 m | |
| Number of strands | - | | | | | 6 |
| Wire cross section | - | | | | | 0.23 mm² |

| Attribute | 153V62SHDPC | 153V62SPC | 153270SA0DPC | 153270SPC |
|-------------------------------------|-------------|------------------|-----------------|------------------|
| Housing colour | Gelb | | | |
| Cable type | - | LIYY 4 x 0,25 mm | - | LIYY 4 x 0,25 mm |
| Cable colour | - | | | |
| Detent present | no | | | |
| Installation | - | | | |
| Certified in accordance with | CE, ETL | | | |
| CE label | yes | | | |
| Contact form | NO/NO | | NO/NC | |
| Min. switching voltage | 19.2 V DC | | | |
| Max. switching voltage | 28.8 V DC | | | |
| Max. switching current | 0.1 A | | | |
| Max. switching current with LED | - | | 0.01 A | - |
| Max. switching power | - | | | |
| Switching frequency | 5 Hz | - | 5 Hz | |
| Assured switching distance (Sao) | 8 mm | | 9 mm | 8.5 mm |
| Assured switch-off distance (Sar) | 17 mm | | 21 mm | |
| Minimum switching distance (S0 min) | 0.5 mm | | | |
| LED display | No | | single-coloured | No |
| Actuation | front | | | |
| Switching principle | magnetic | | | |
| Series resistor | 22 Ohm | | | |
| Technology | Reed | | | |
| Min. switching current | - | | | |
| Coding acc. to EN ISO 14119 | Low | | | |
| B10d acc. to EN ISO 13849-1 | 20000000 | | | |
| Type acc. to EN ISO 14119 | 4 | | | |
| Mission time in years | 20 a | | | |
| Structure acc. to EN ISO 13849-1 | Two-channel | | | |
| Housing design | - | cuboid | | |
| Dimensions | 36x26x13 | | | |

| Attribute | 153V62SHDPC | 153V62SPC | 153270SA0DPC | 153270SPC |
|---|--------------------|-----------|--------------|-----------|
| Minimum installation distance (between two sensors) | - | | | |
| cannot be mounted flush | yes | | | |
| Housing material | PBT | | | |
| Cable material | - | PVC | - | PVC |
| Protection class | IP67 DIN EN 60529 | | | |
| Protection class, connector | - | | | |
| Operating temperature min. | -25 °C | - | -25 °C | |
| Max. operating temperature | 75 °C | - | 75 °C | |
| Min. cable temperature range, moving | - | | | |
| Max. cable temperature range, moving | - | | | |
| Min. cable temperature range, fixed installation | - | | | |
| Max. cable temperature range, fixed installation | - | | | |
| Min. storage temperature | -25 °C | - | -25 °C | |
| Max. storage temperature | 75 °C | - | 75 °C | |
| Mounting type | screwed from above | | | |
| Possible actuators | 30428112BSPC | | 30428112SPC | |
| Installation opening | 4.5mm | | | |
| Weight | 56 g | - | | |
| Connector type | M8x1 4-polig | - | M8x1 4-polig | - |
| Cable length | - | 1 m | - | 1 m |
| Number of strands | - | | | 4 |
| Wire cross section | - | | | 0.25 mm² |